

District 2 Community Traffic Safety Program

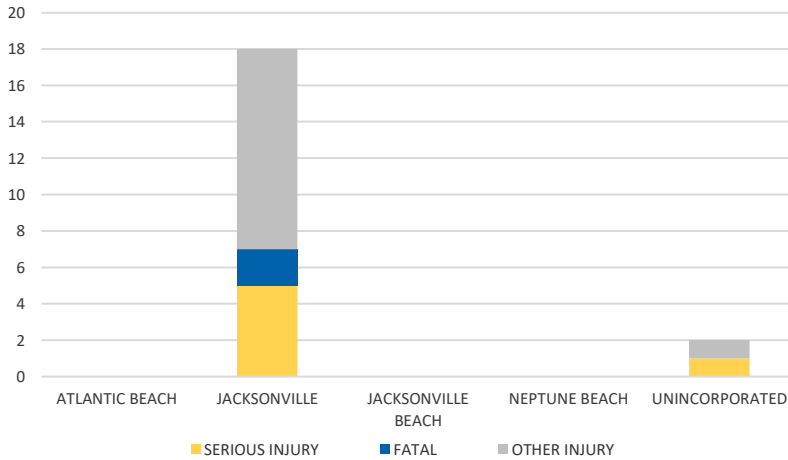


DUVAL COUNTY 2021 Rural Road Crash Data Summary

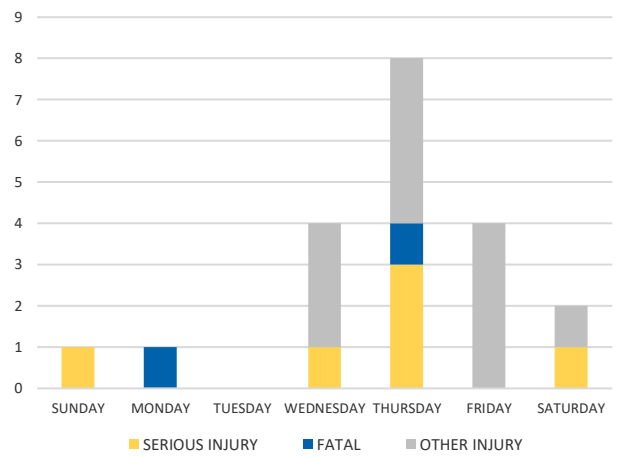
Severity	Duval					District 2	
	Fatal	Incapacitating Injury	Non-Incapacitating Injury	Possible Injury	No Injury/ Property Damage Only	Total	
Crashes	2	4	3	5	37	51	3,030
People Injured	2	6	5	7	N/A	20	2,061

Note: Crash severity is determined from the highest injury type in the crash (i.e. if a crash had both a fatal and a serious it is determined to be a fatal crash).

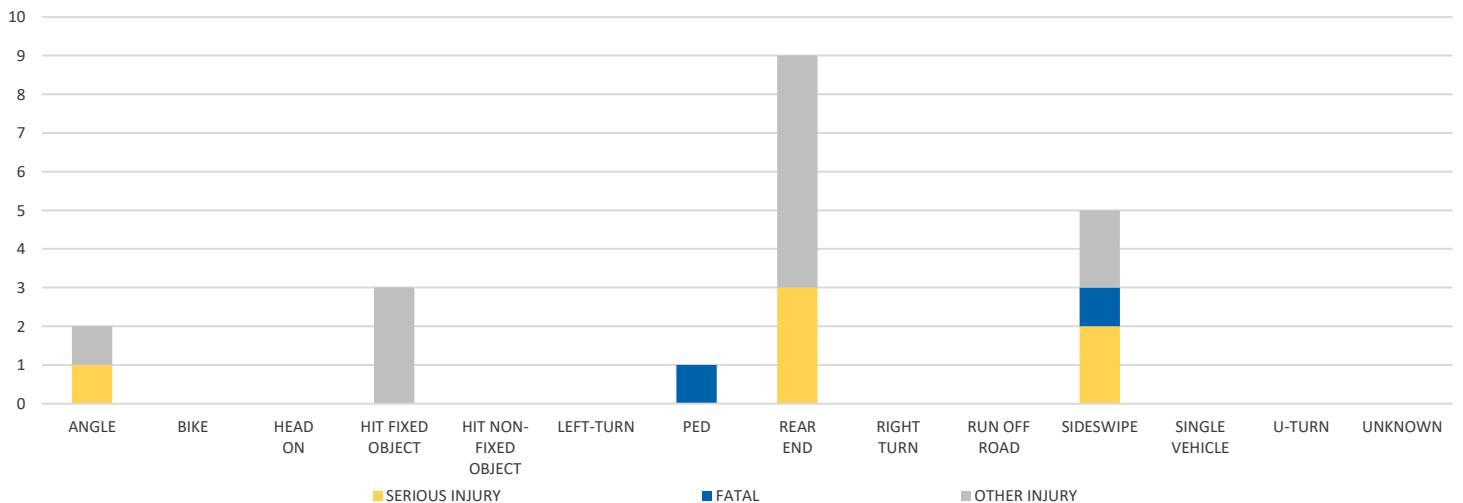
CITY



DAY OF WEEK



CRASH TYPE



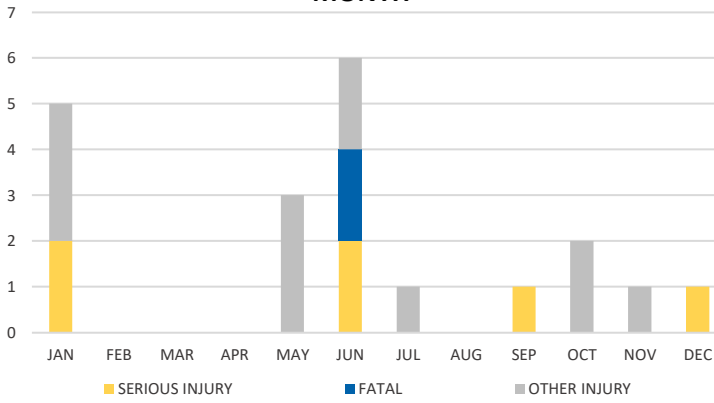
NOTE: Fatal/Serious/Other Injury in bar graphs indicates persons not crashes.
SOURCES: 2021 CARS data (unofficial at time of report)

District 2 Community Traffic Safety Program

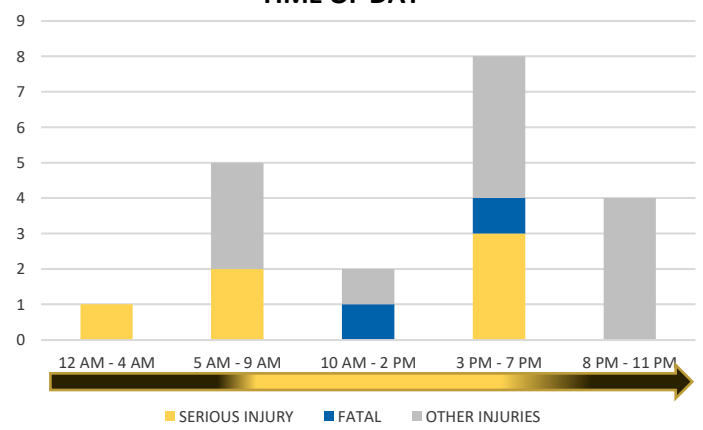
DUVAL COUNTY 2021 Rural Road Crash Data Summary



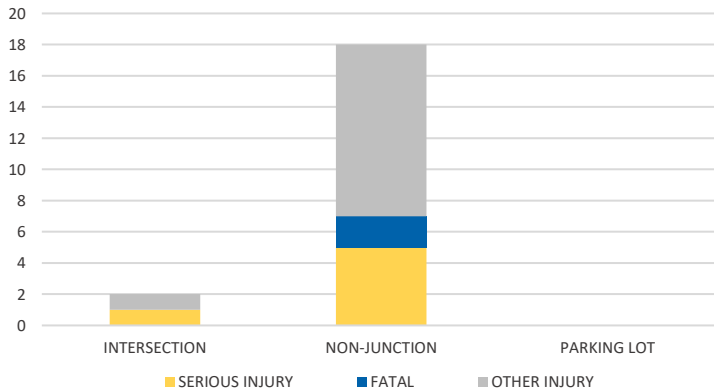
MONTH



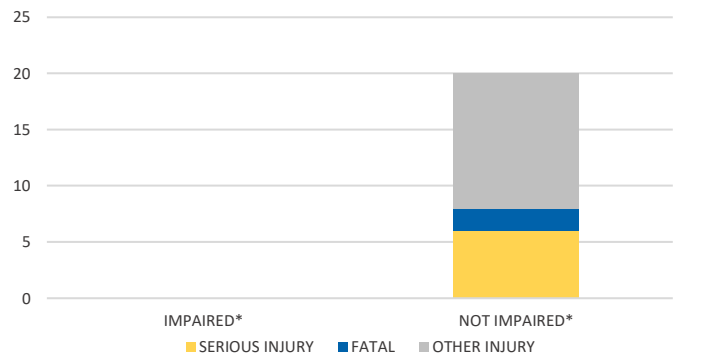
TIME OF DAY



LOCATION ON ROADWAY



IMPAIRED



*Involving alcohol and/or drugs either driver.

LIGHTING



NOTE: Fatal/Serious/Other Injury in bar graphs indicates persons not crashes.
SOURCES: 2021 CARS data (unofficial at time of report)