

District 2 Community Traffic Safety Program

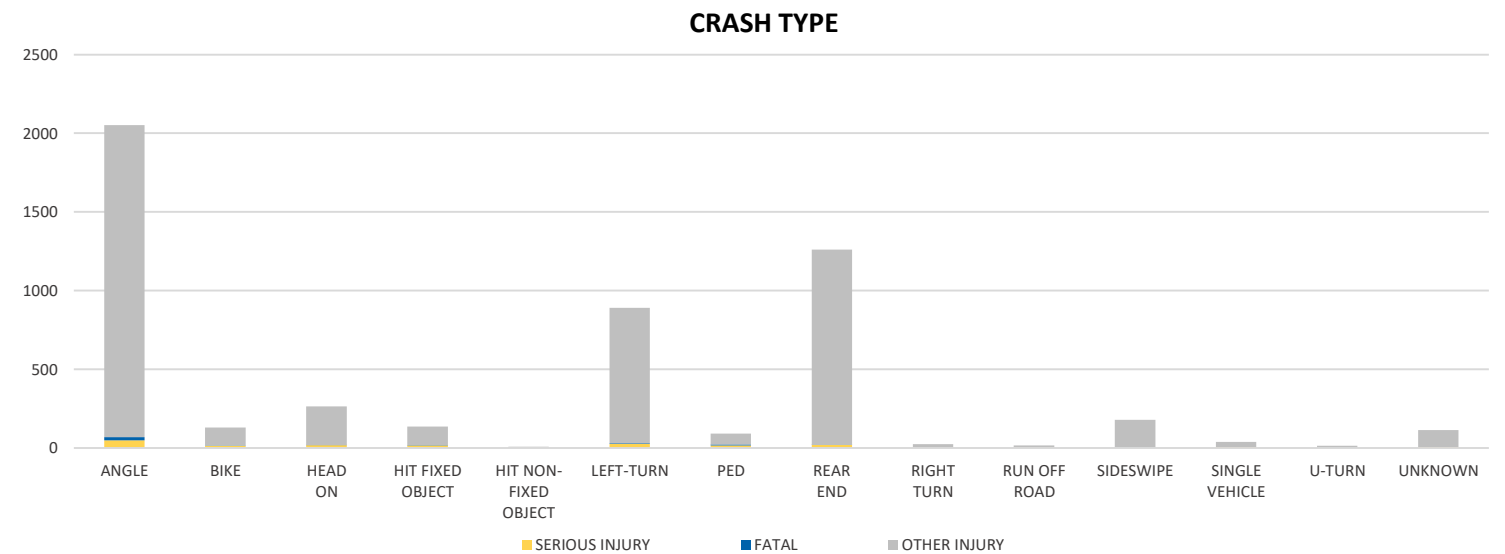
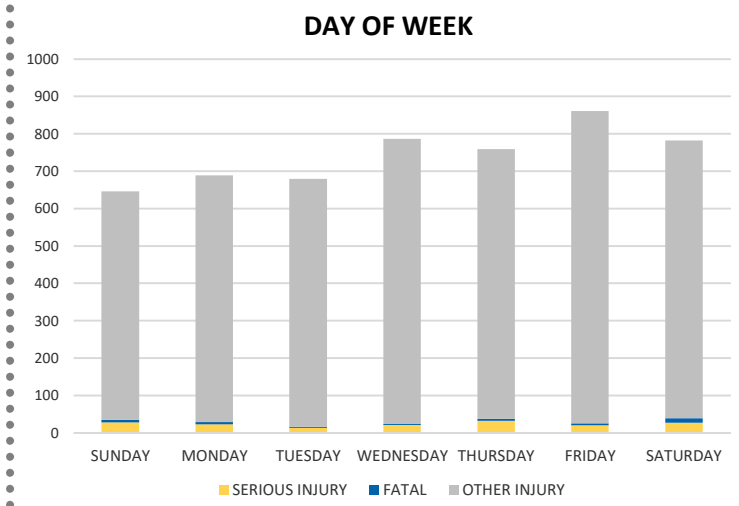
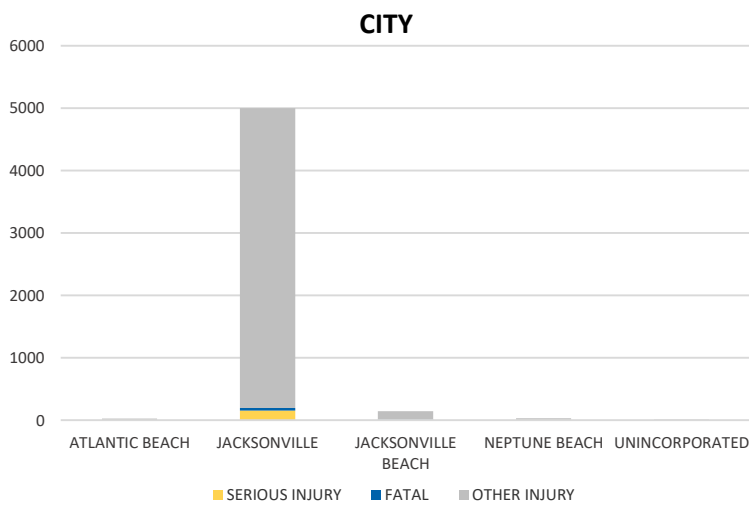


DUVAL COUNTY

2021 Intersection Crash Data Summary

Severity	Duval County					District 2	
	Fatal	Incapacitating Injury	Non-Incapacitating Injury	Possible Injury	No Injury/Property Damage Only*	Total	
Crashes	39	141	1,098	2,137	6,240	9,655	17,225
People Injured	41	164	1,466	3,531	N/A	5,202	9,236

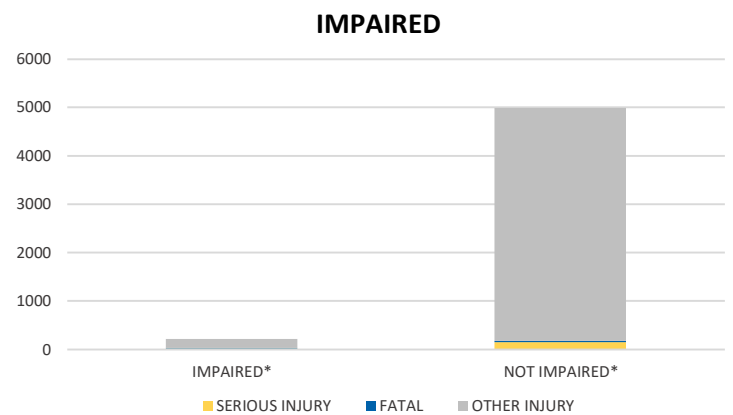
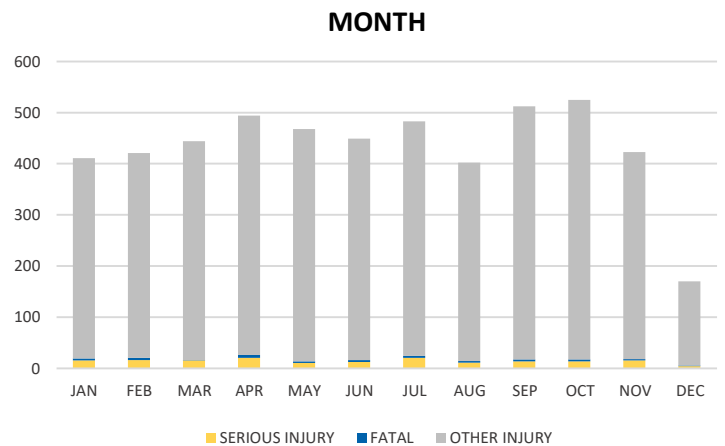
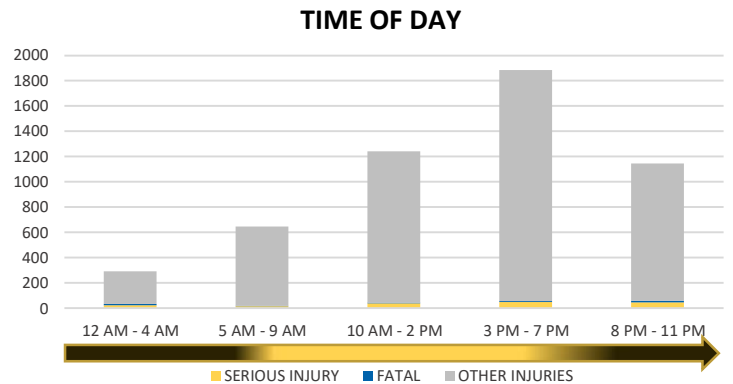
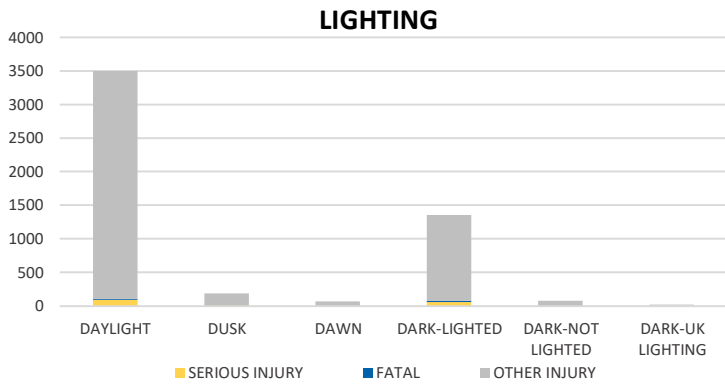
Note: Crash severity is determined from the highest injury type in the crash (i.e. if a crash had both a fatal and a serious it is determined to be a fatal crash).



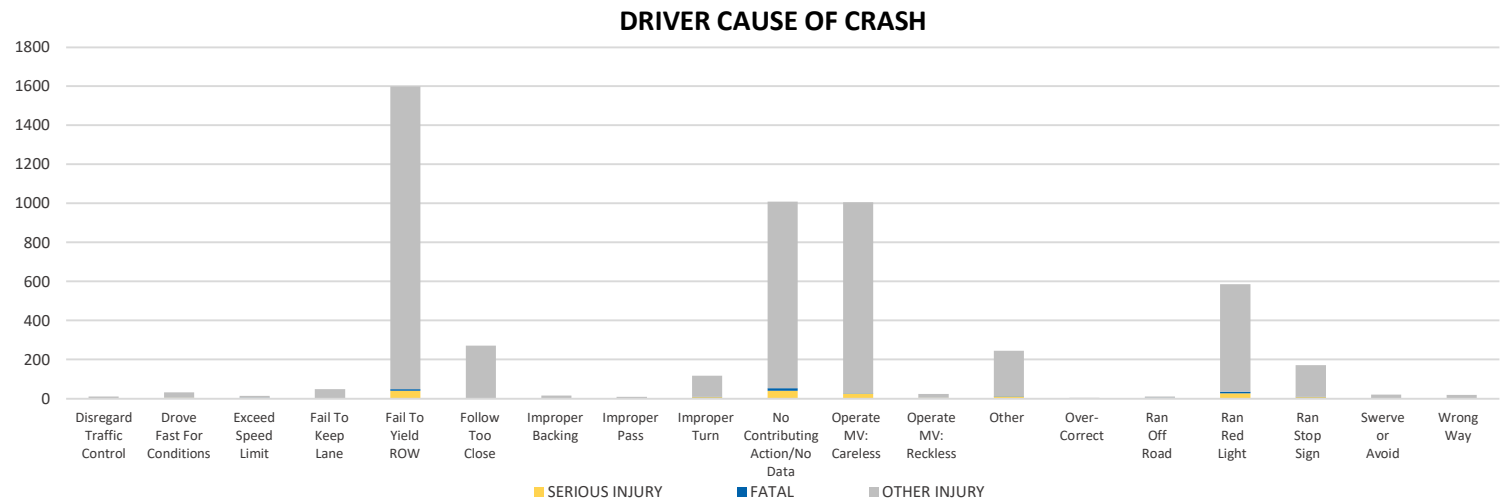
NOTE: Fatal/Serious/Other Injury in bar graphs indicates persons not crashes.
 SOURCES: 2021 CARS data (unofficial at time of report)

District 2 Community Traffic Safety Program

DUVAL COUNTY 2021 Intersection Crash Data Summary



*Involving alcohol and/or drugs by either driver.



NOTE: Fatal/Serious/Other Injury in bar graphs indicates persons not crashes.
 SOURCES: 2021 CARS data (unofficial at time of report)