

District 2 Community Traffic Safety Program

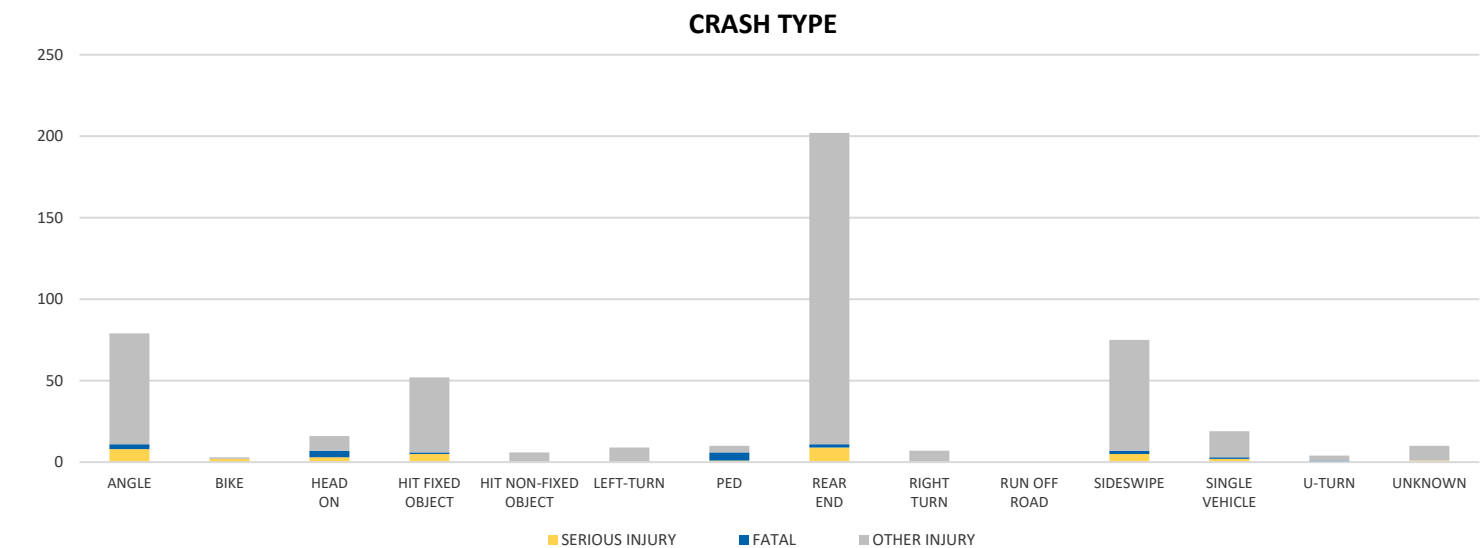
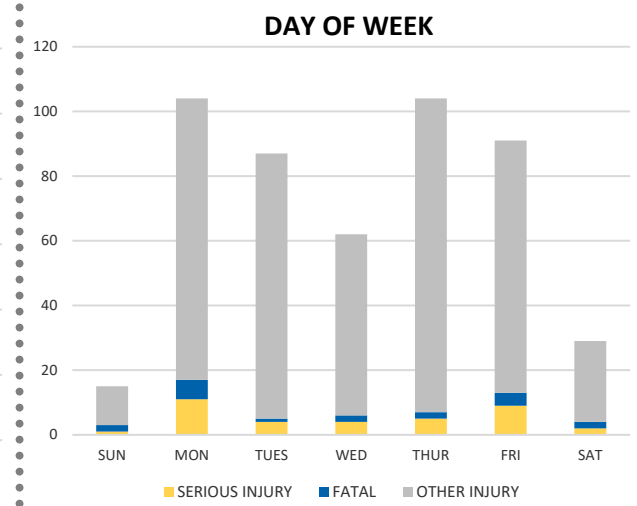
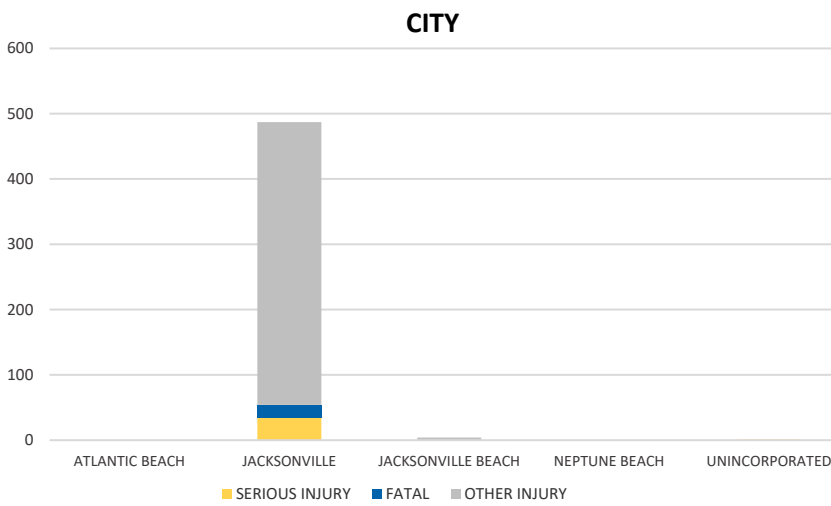
DUVAL COUNTY

2021 Commercial Motor Vehicle Crash Data Summary



Severity	DUVAL COUNTY					DISTRICT 2	
	Fatal	Incapacitating Injury	Non-Incapacitating Injury	Possible Injury	No Injury/Property Damage Only*	Total	
Crashes	17	27	127	227	1,880	2,278	4,443
People Injured	19	36	147	290	N/A	492	1,196

Note: Crash severity is determined from the highest injury type in the crash (i.e. if a crash had both a fatal and a serious it is determined to be a fatal crash).



NOTE: Fatal/Serious/Other Injury in bar graphs indicates persons not crashes.

SOURCE: 2021 CARS data (unofficial at time of report)

DATE GENERATED: 1/31/2022

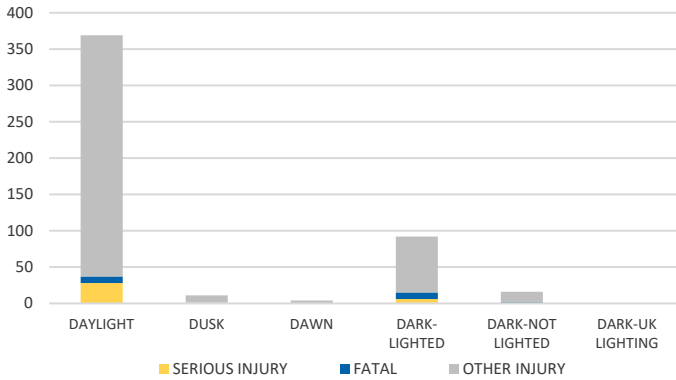
District 2 Community Traffic Safety Program

DUVAL COUNTY

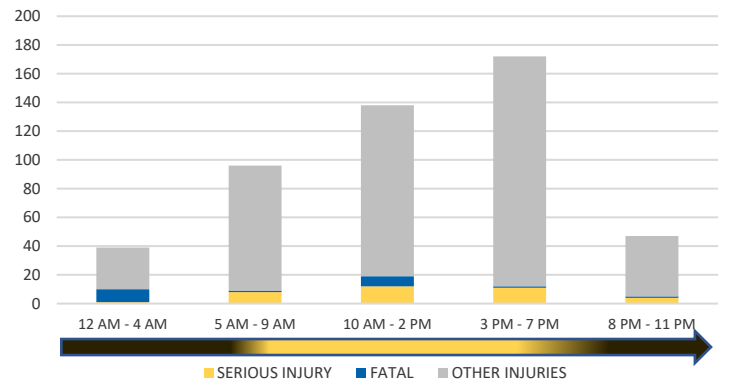
2021 Commercial Motor Vehicle Crash Data Summary



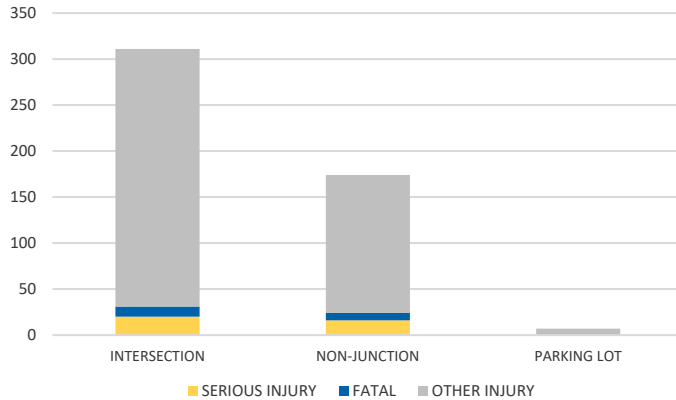
LIGHTING



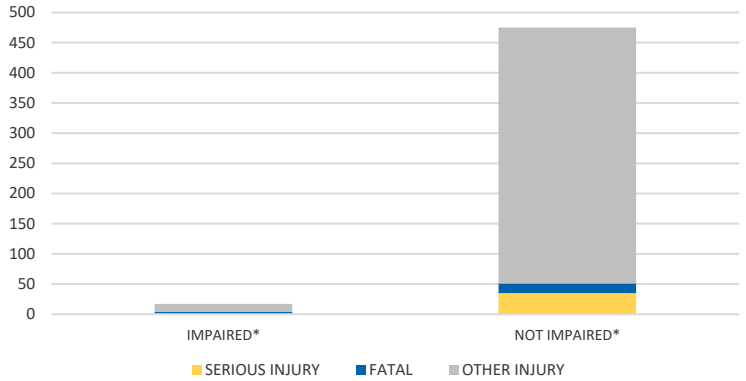
TIME OF DAY



LOCATION ON ROADWAY

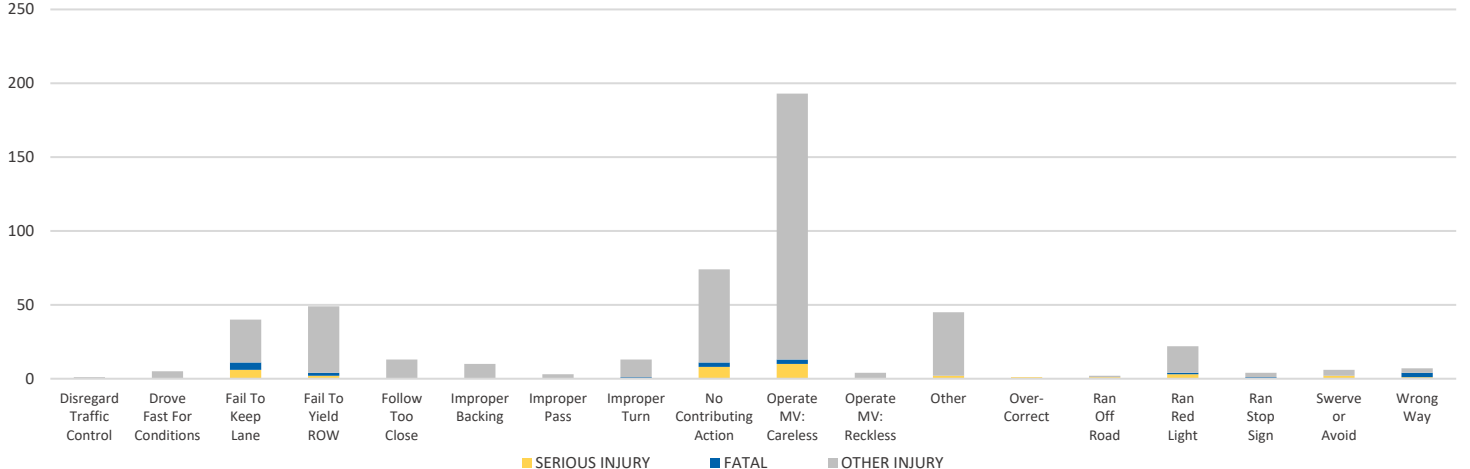


IMPAIRED



\*Involving alcohol and/or drugs by either driver.

CAUSE OF CRASH



NOTE: Fatal/Serious/Other Injury in bar graphs indicates persons not crashes.

SOURCE: 2021 CARS data (unofficial at time of report)

DATE GENERATED: 1/31/2022