

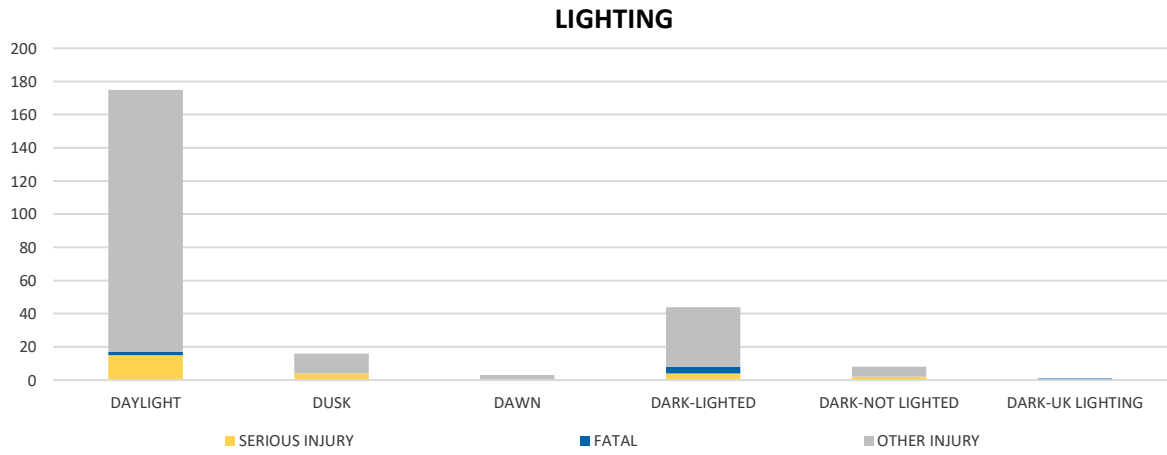
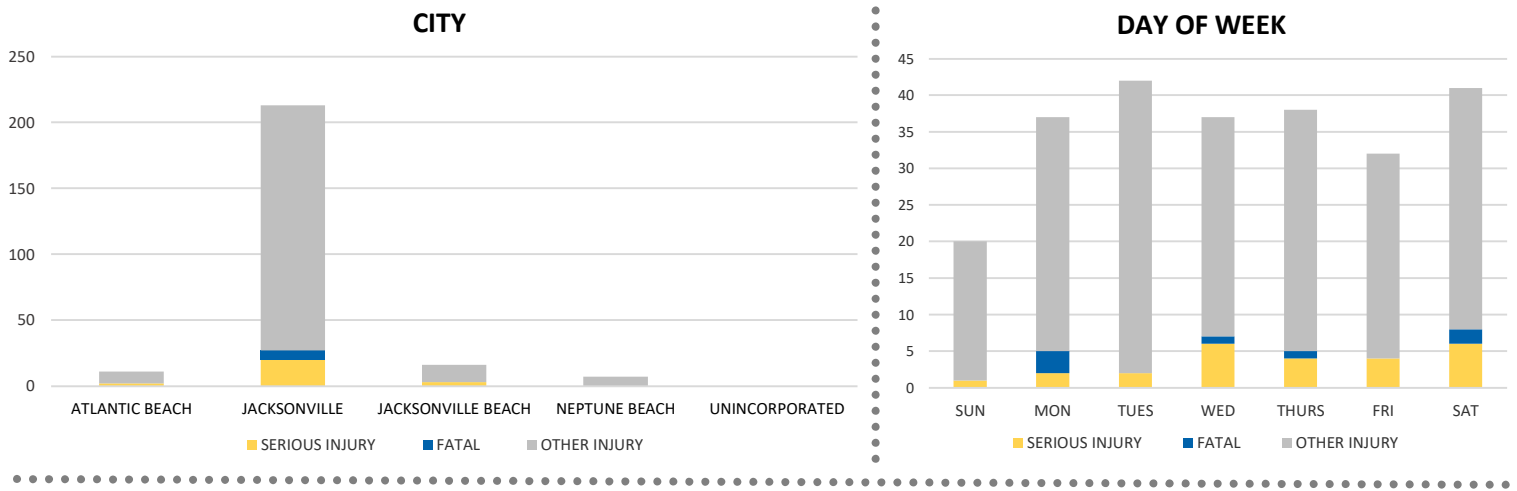
District 2 Community Traffic Safety Program

# DUVAL COUNTY 2021 Bicycle Crash Data Summary



Severity	DUVAL COUNTY					DISTRICT 2	
	Fatal	Incapacitating Injury	Non-Incapacitating Injury	Possible Injury	No Injury/Property Damage Only*	Total	
Crashes	7	25	116	93	50	291	577
People Injured	7	25	121	94	N/A	247	500

**Note:** Crash severity is determined from the highest injury type in the crash (i.e. if a crash had both a fatal and a serious it is determined to be a fatal crash).



	Daylight	NOT Daylight
All Bicycle Crashes	72.5%	27.5%
Fatal or Incapacitating Bicycle Crashes	5.8%	5.2%

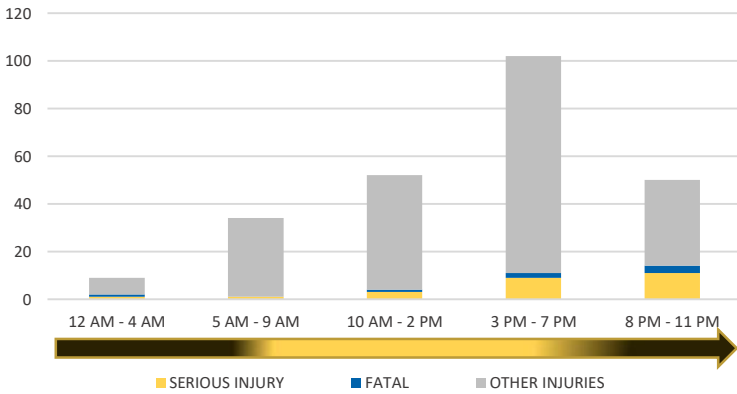
NOTE: Fatal/Serious/Other Injury in bar graphs indicates persons not crashes.  
SOURCES: 2021 CARS data (unofficial at time of report)

District 2 Community Traffic Safety Program

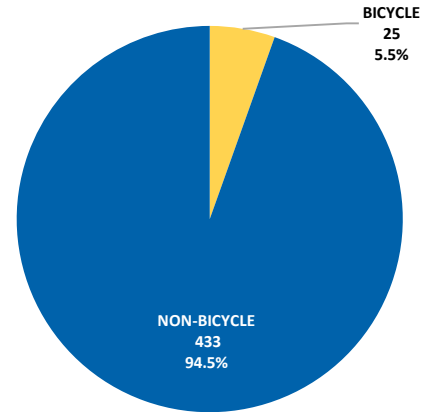
# DUVAL COUNTY 2021 Bicycle Crash Data Summary



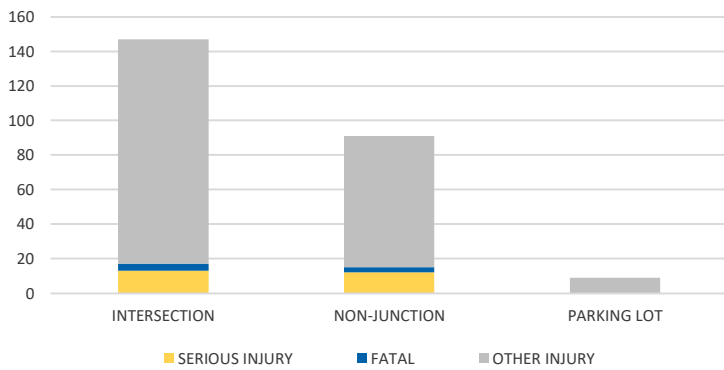
**TIME OF DAY**



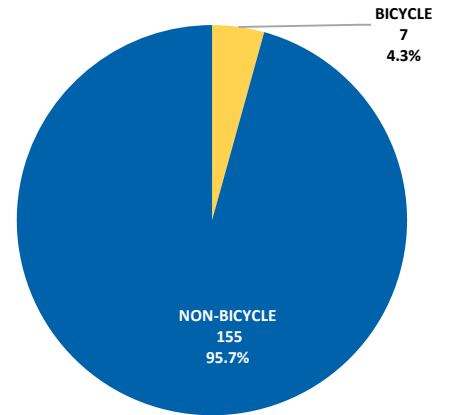
**BICYCLE SERIOUS INJURY CRASHES VS TOTAL SERIOUS INJURY CRASHES**



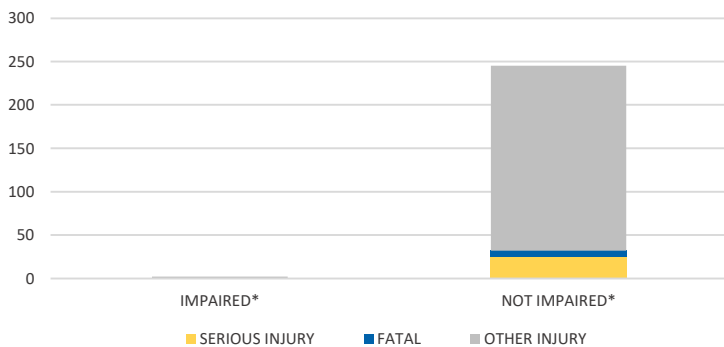
**LOCATION ON ROADWAY**



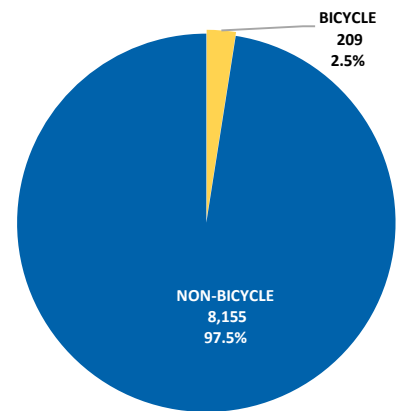
**BICYCLE FATAL CRASHES VS TOTAL FATAL CRASHES**



**IMPAIRED**



**BICYCLE OTHER INJURY CRASHES VS TOTAL OTHER INJURY CRASHES**



\*Involving alcohol and/or drugs by bicyclist and/or driver.