

## District 2 Community Traffic Safety Program

# DIXIE COUNTY

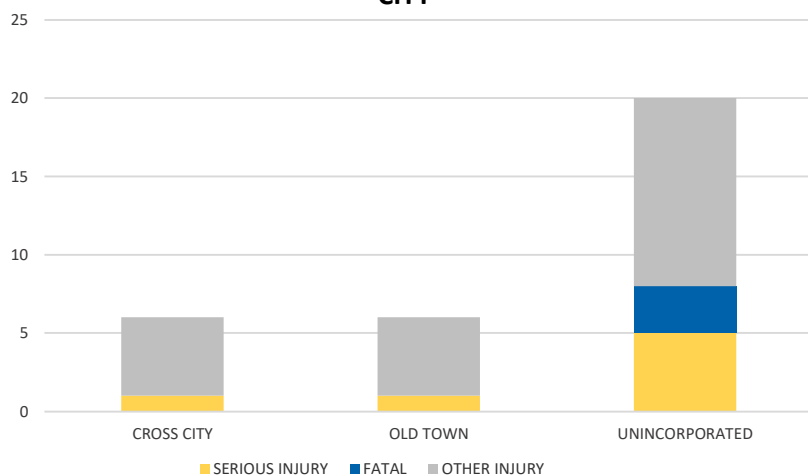
## 2021 Occupant Protection (No Restraint) Crash Data Summary



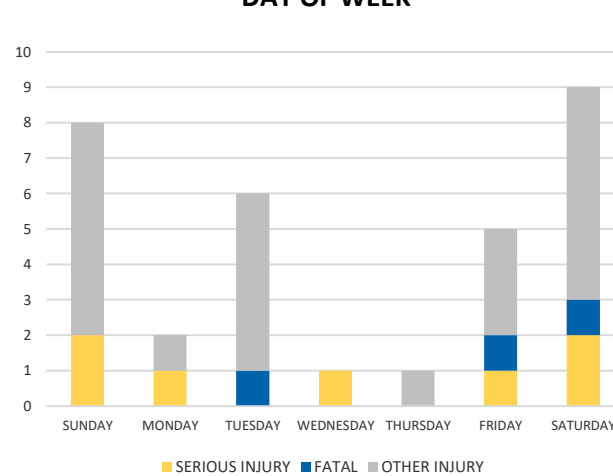
Severity	DIXIE COUNTY					DISTRICT 2	
	Fatal	Incapacitating Injury	Non-Incapacitating Injury	Possible Injury	No Injury/Property Damage Only*	Total	
Crashes	3	6	5	5	2	21	2,072
People Injured	3	7	9	13	N/A	32	2,073

Note: Crash severity is determined from the highest injury type in the crash (i.e. if a crash had both a fatal and a serious it is determined to be a fatal crash).

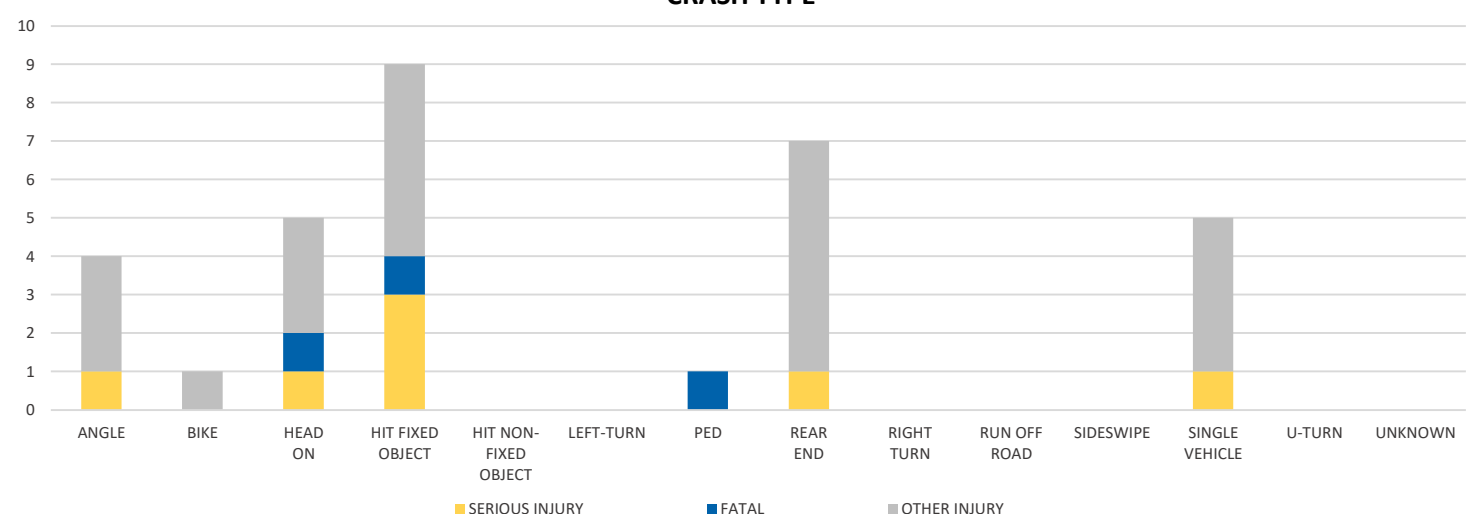
### CITY



### DAY OF WEEK



### CRASH TYPE



NOTE: Fatal/Serious/Other Injury in bar graphs indicates persons not crashes.  
 SOURCE: 2021 CARS data (unofficial at time of report)

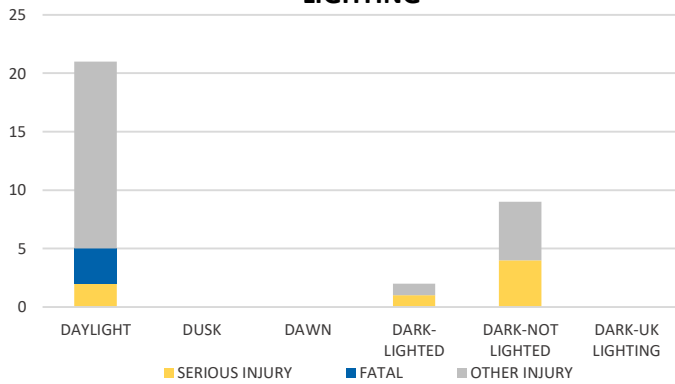
# District 2 Community Traffic Safety Program

## DIXIE COUNTY

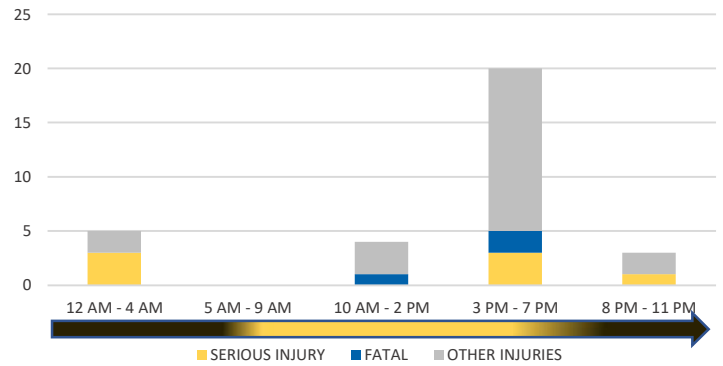
### 2021 Occupant Protection (No Restraint) Crash Data Summary



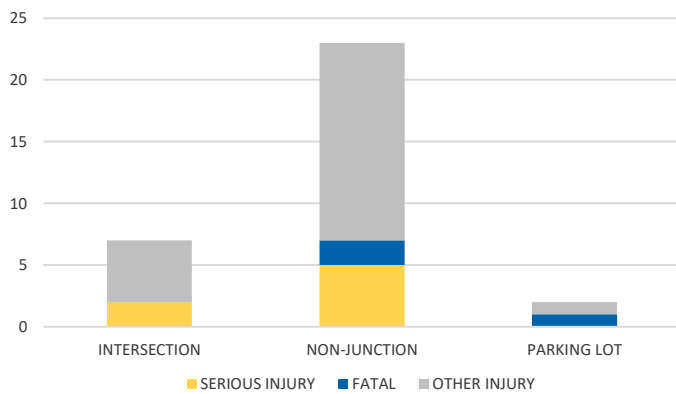
**LIGHTING**



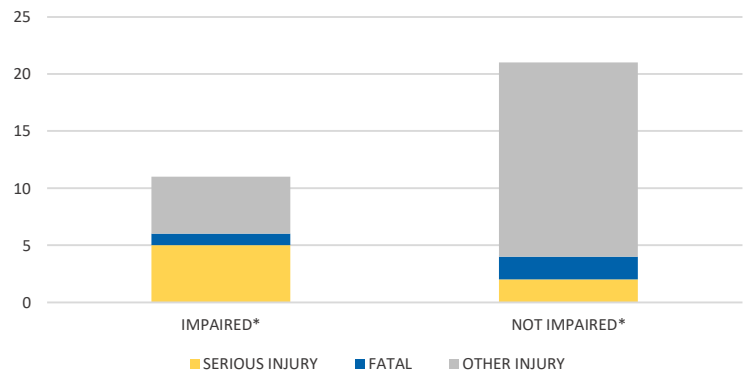
**TIME OF DAY**



**LOCATION ON ROADWAY**

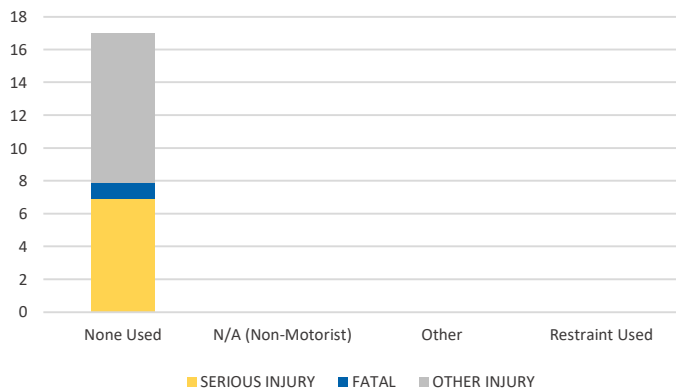


**IMPAIRED**

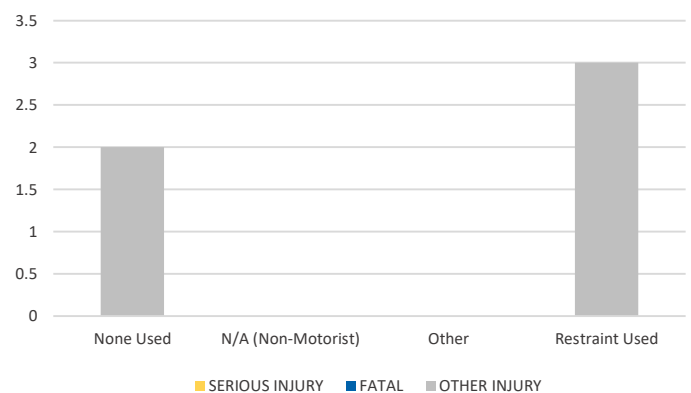


\*Involving alcohol and/or drugs by either driver.

**DRIVER 1 - RESTRAINT TYPE**



**DRIVER 2 - RESTRAINT TYPE**



NOTE: Fatal/Serious/Other Injury in bar graphs indicates persons not crashes.  
SOURCE: 2021 CARS data (unofficial at time of report)