

District 2 Community Traffic Safety Program

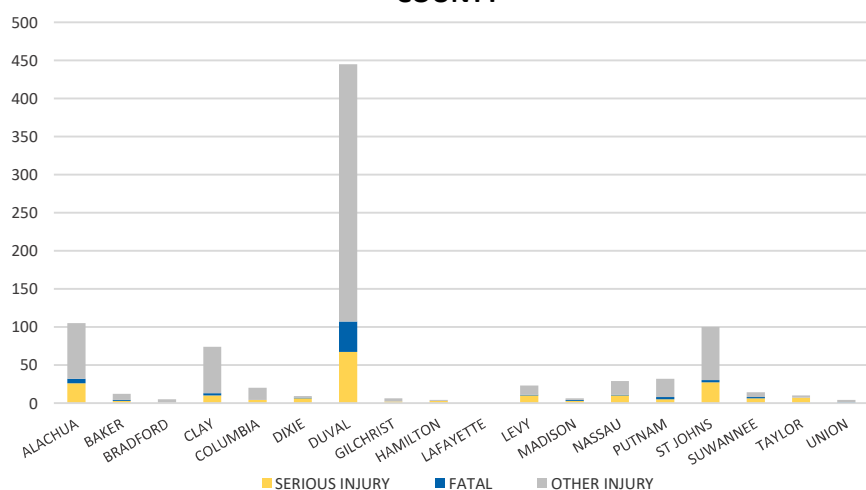
DISTRICTWIDE 2021 Motorcycle Crash Data Summary



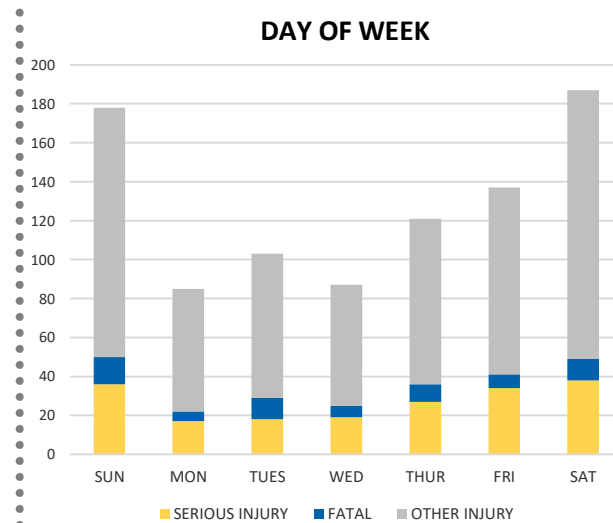
| Severity | District 2 | | | | | Statewide | |
|----------------|------------|-----------------------|---------------------------|-----------------|---------------------------------|-----------|--------|
| | Fatal | Incapacitating Injury | Non-Incapacitating Injury | Possible Injury | No Injury/Property Damage Only* | Total | |
| Crashes | 59 | 167 | 357 | 166 | 219 | 968 | 10,017 |
| People Injured | 63 | 189 | 401 | 245 | N/A | 898 | 8,751 |

Note: Crash severity is determined from the highest injury type in the crash (i.e. if a crash had both a fatal and a serious it is determined to be a fatal crash).

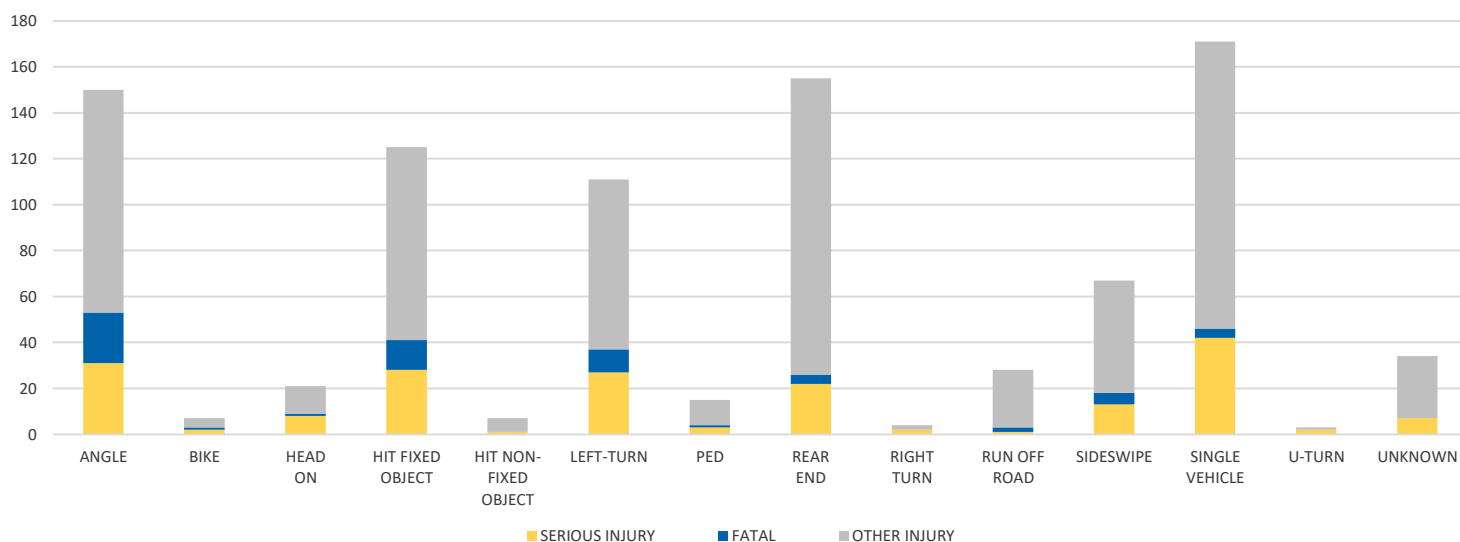
COUNTY



DAY OF WEEK



CRASH TYPE



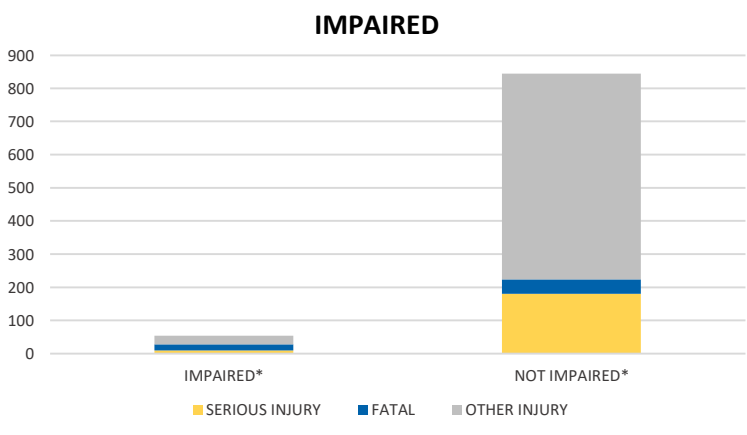
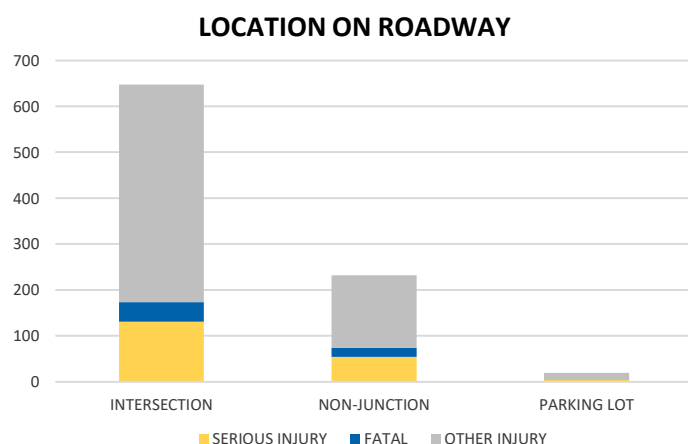
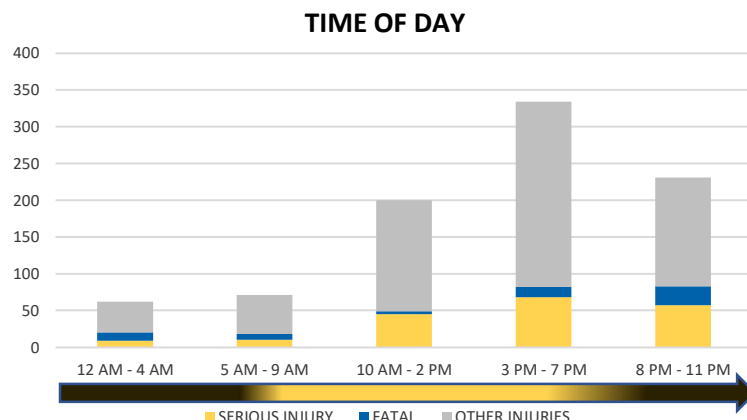
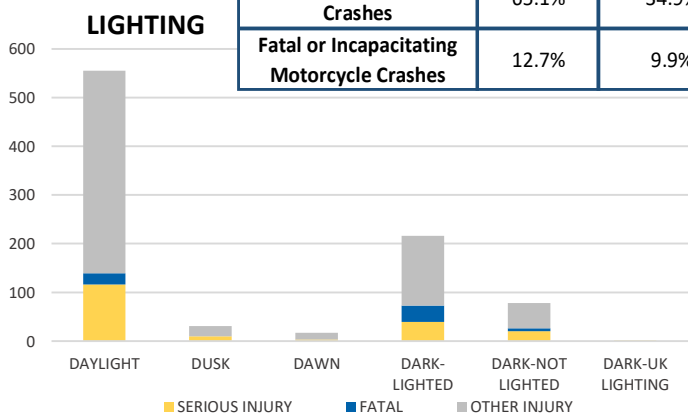
NOTE:Fatal/Serious/Other Injury in bar graphs indicates persons not crashes.
SOURCE: 2021 CARS data (unofficial at time of report)

District 2 Community Traffic Safety Program

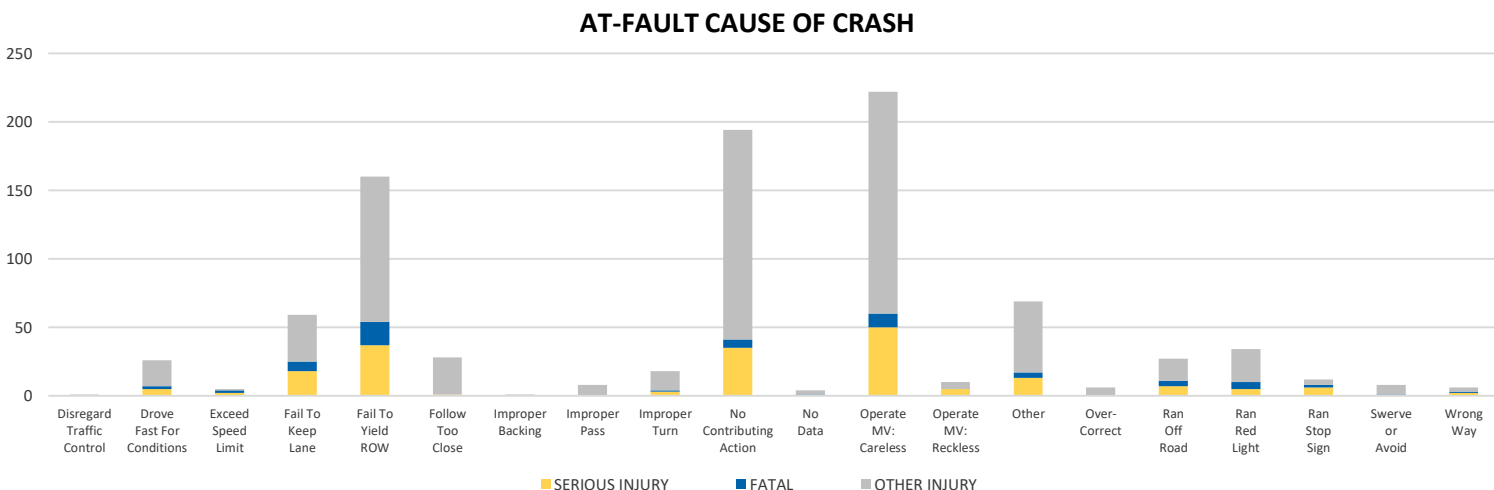
DISTRICTWIDE 2021 Motorcycle Crash Data Summary



| | Daylight | NOT Daylight |
|--|----------|--------------|
| All Motorcycle Crashes | 65.1% | 34.9% |
| Fatal or Incapacitating Motorcycle Crashes | 12.7% | 9.9% |



*Involving alcohol and/or drugs by either driver.



NOTE: Fatal/Serious/Other Injury in bar graphs indicates persons not crashes.
SOURCE: 2021 CARS data (unofficial at time of report)