

District 2 Community Traffic Safety Program

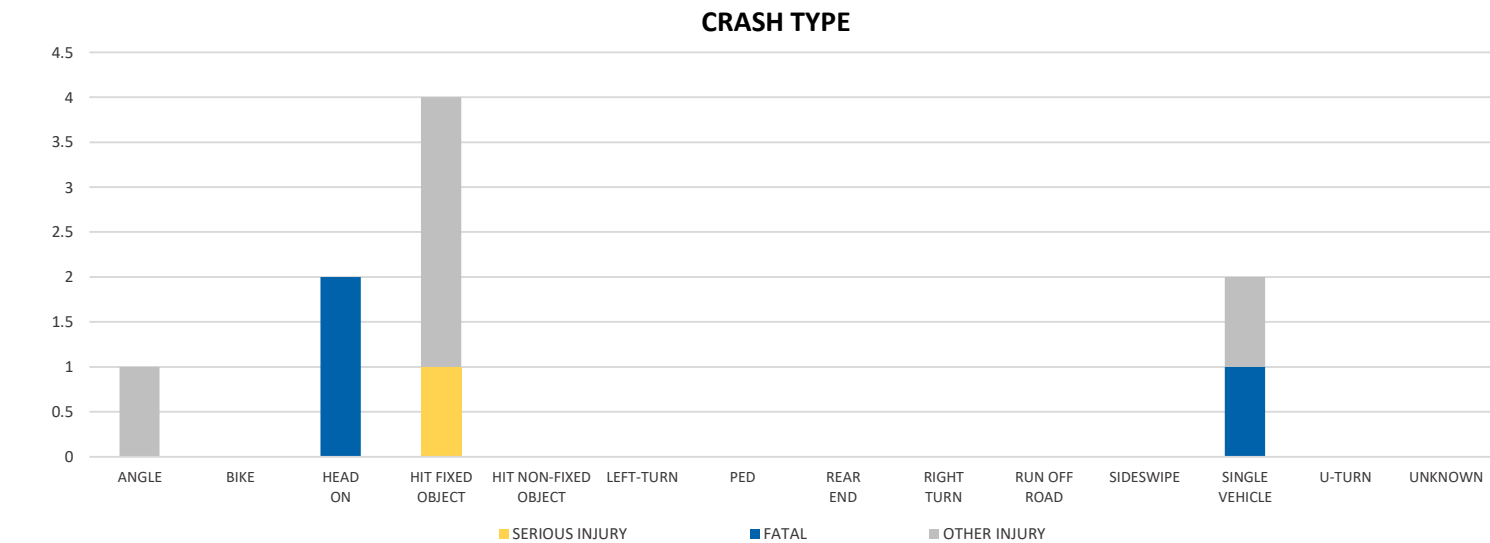
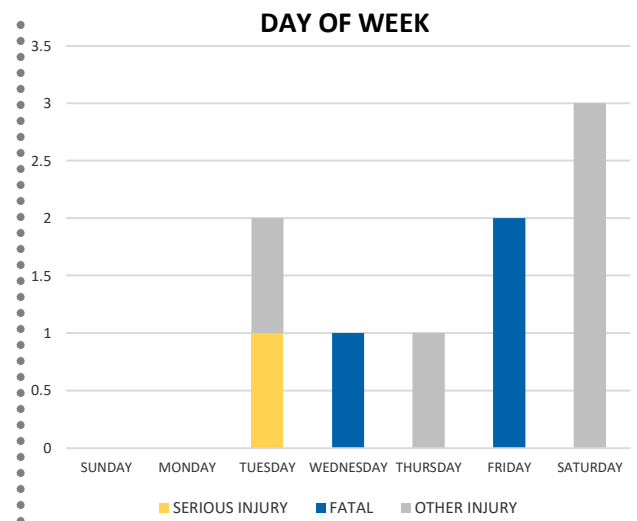
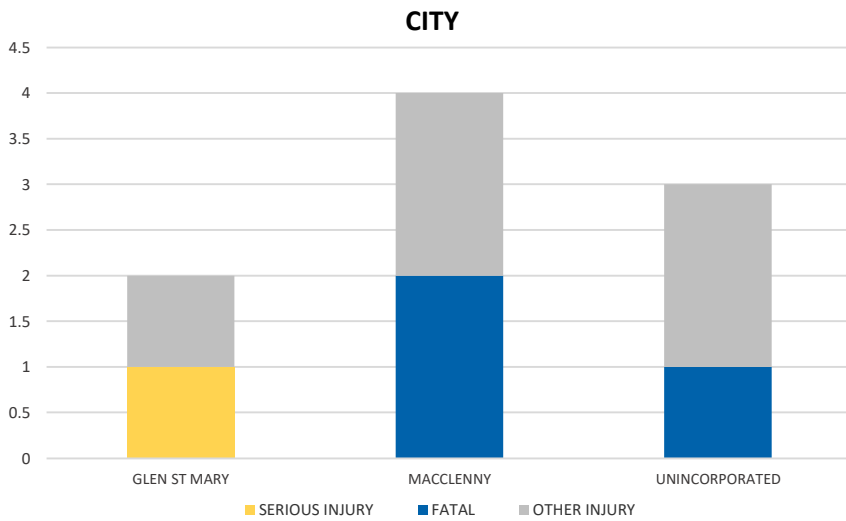
BAKER COUNTY

2021 Impaired Driving Crash Data Summary



Severity	BAKER COUNTY					DISTRICT 2	
	Fatal	Incapacitating Injury	Non-Incapacitating Injury	Possible Injury	No Injury/Property Damage Only*	Total	
Crashes	2	1	2	1	8	14	2,024
People Injured	3	1	3	2	N/A	9	1,387

Note: Crash severity is determined from the highest injury type in the crash (i.e. if a crash had both a fatal and a serious it is determined to be a fatal crash).



NOTE: Fatal/Serious/Other Injury in bar graphs indicates persons not crashes.
 SOURCE: 2021 CARS data (unofficial at time of report)

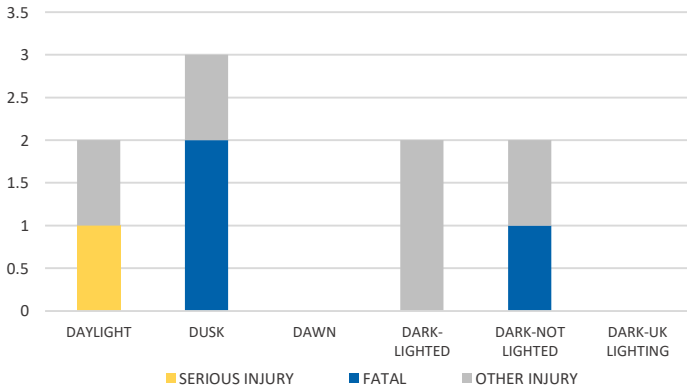
District 2 Community Traffic Safety Program

BAKER COUNTY

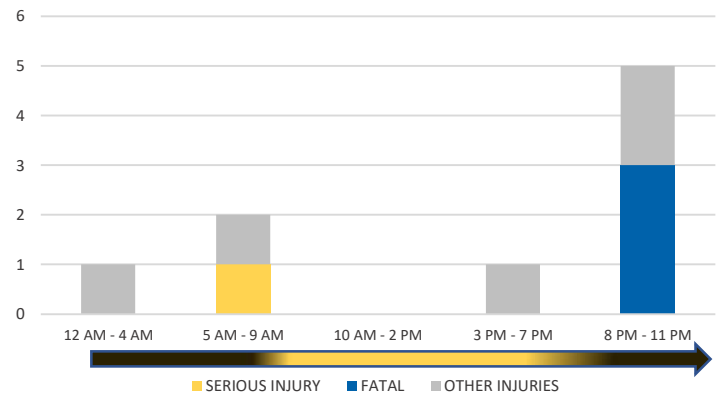
2021 Impaired Driving Crash Data Summary



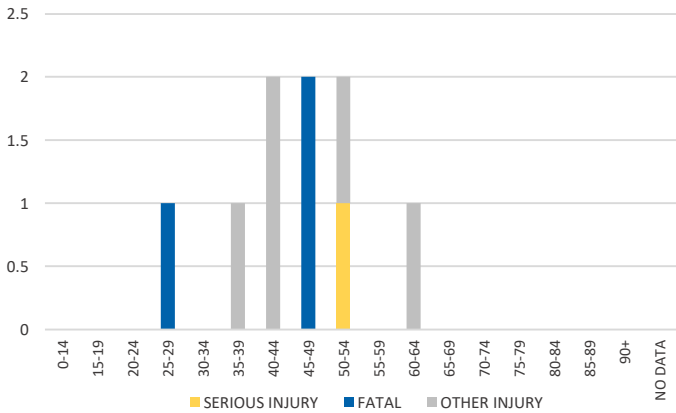
LIGHTING



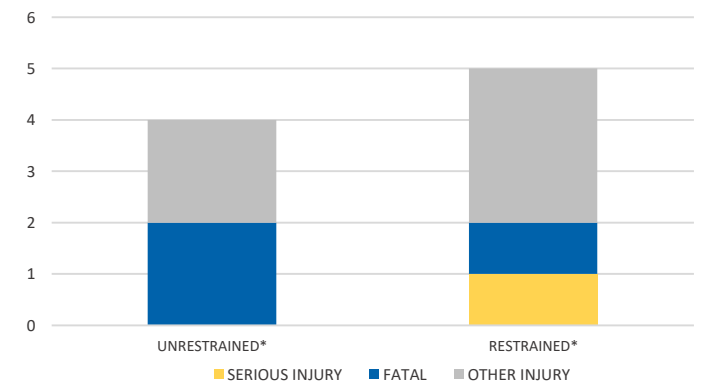
TIME OF DAY



IMPAIRED DRIVER AGE

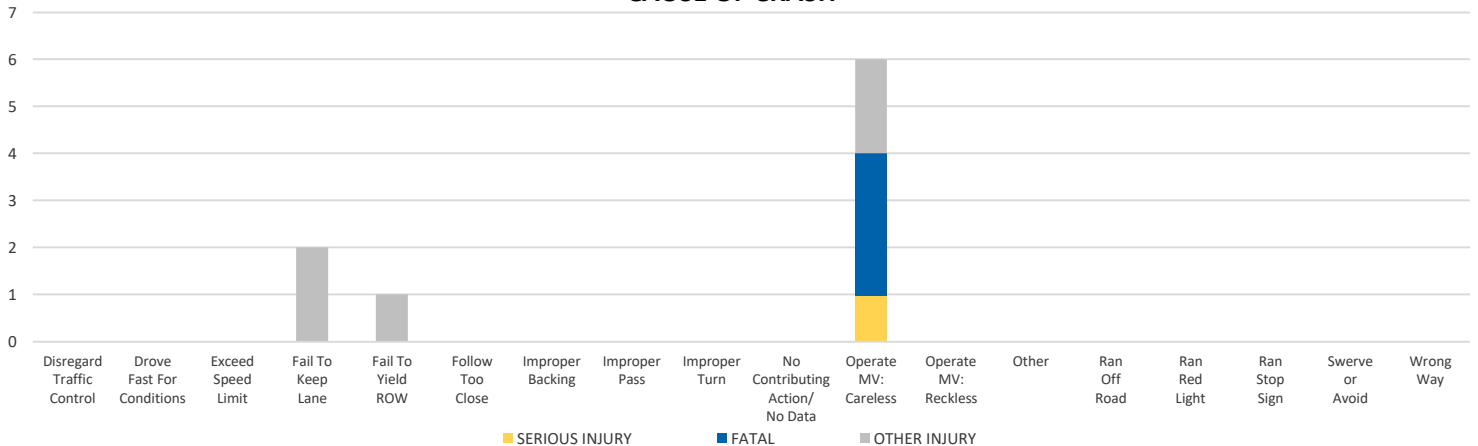


OCCUPANT PROTECTION



*Number of injuries where at least one person was unrestrained/restrained.

CAUSE OF CRASH



NOTE: Fatal/Serious/Other Injury in bar graphs indicates persons not crashes.
 SOURCE: 2021 CARS data (unofficial at time of report)