

District 2 Community Traffic Safety Program

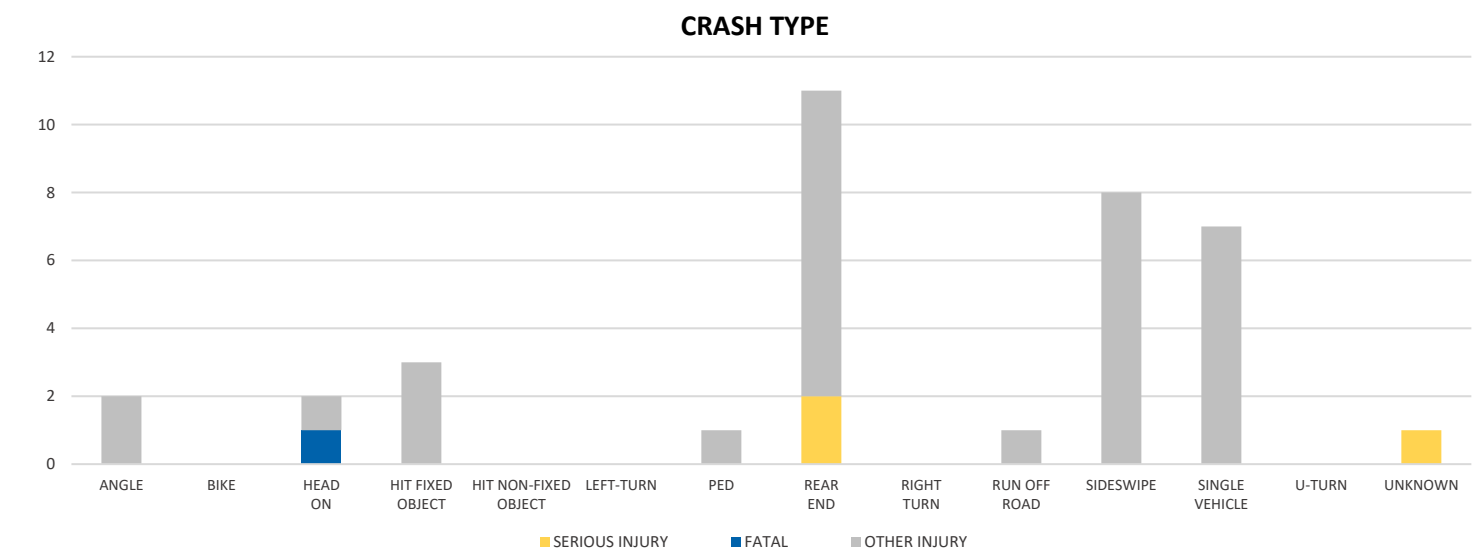
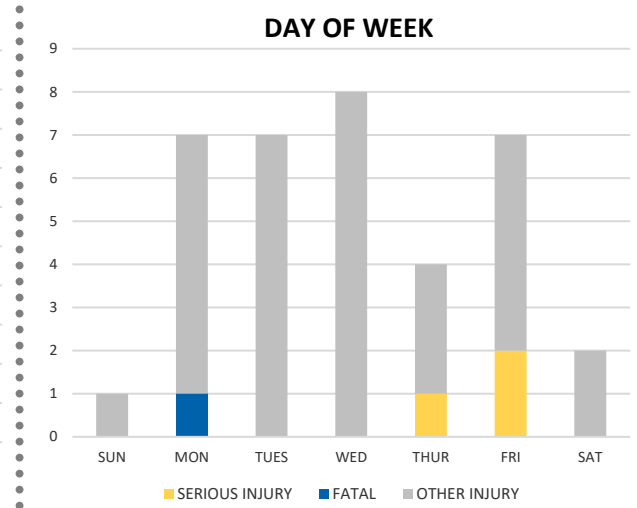
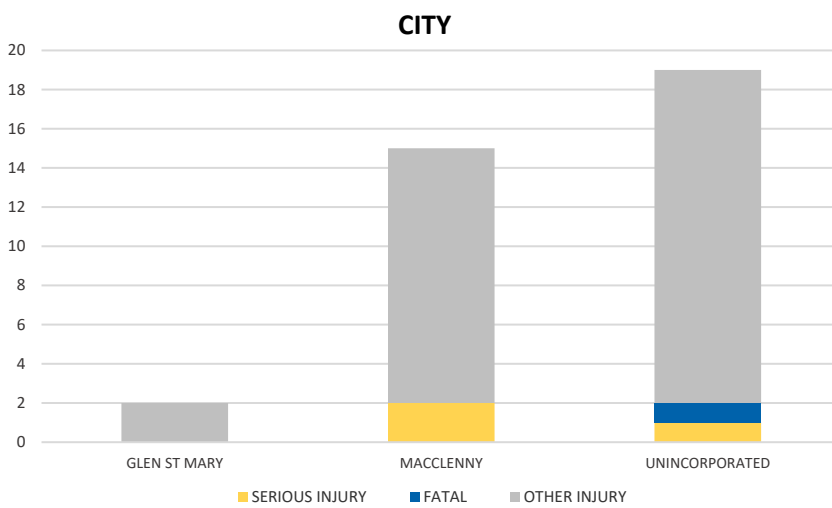
**BAKER COUNTY**

**2021 Commercial Motor Vehicle Crash Data Summary**



Severity	BAKER COUNTY					DISTRICT 2	
	Fatal	Incapacitating Injury	Non-Incapacitating Injury	Possible Injury	No Injury/Property Damage Only*	Total	
Crashes	0	0	0	0	84	84	4,443
People Injured	1	3	11	21	N/A	36	1,196

Note: Crash severity is determined from the highest injury type in the crash (i.e. if a crash had both a fatal and a serious it is determined to be a fatal crash).



NOTE: Fatal/Serious/Other Injury in bar graphs indicates persons not crashes.

SOURCE: 2021 CARS data (unofficial at time of report)

DATE GENERATED: 1/31/2022

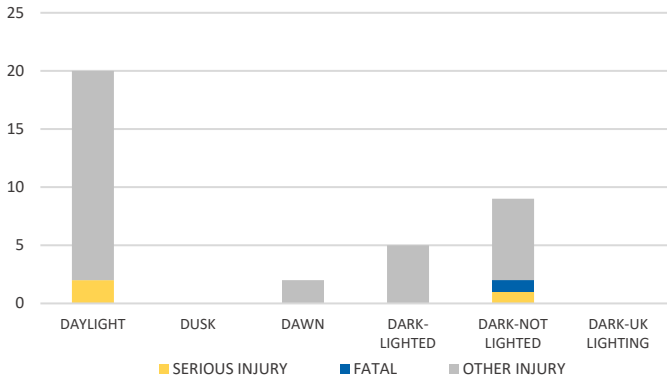
District 2 Community Traffic Safety Program

BAKER COUNTY

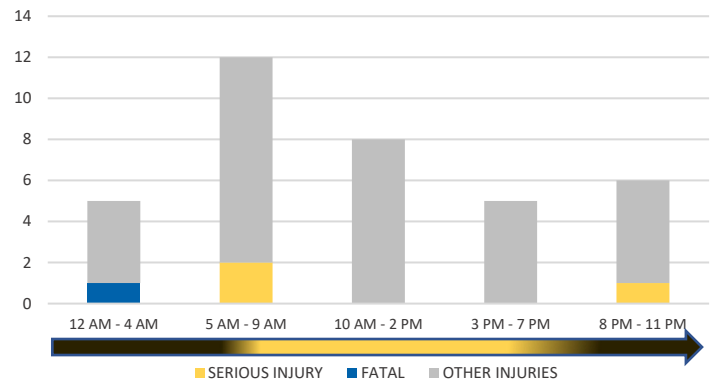
2021 Commercial Motor Vehicle Crash Data Summary



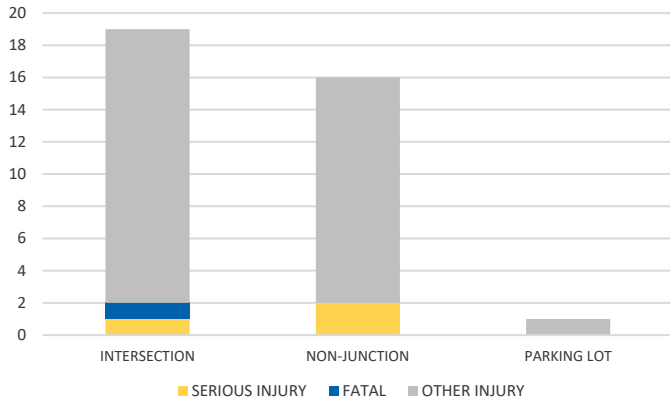
LIGHTING



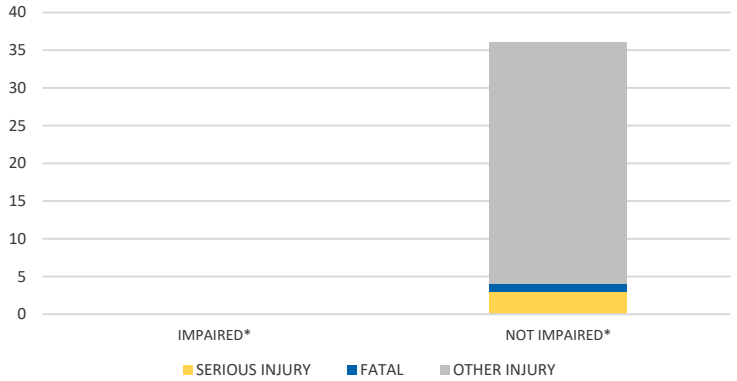
TIME OF DAY



LOCATION ON ROADWAY

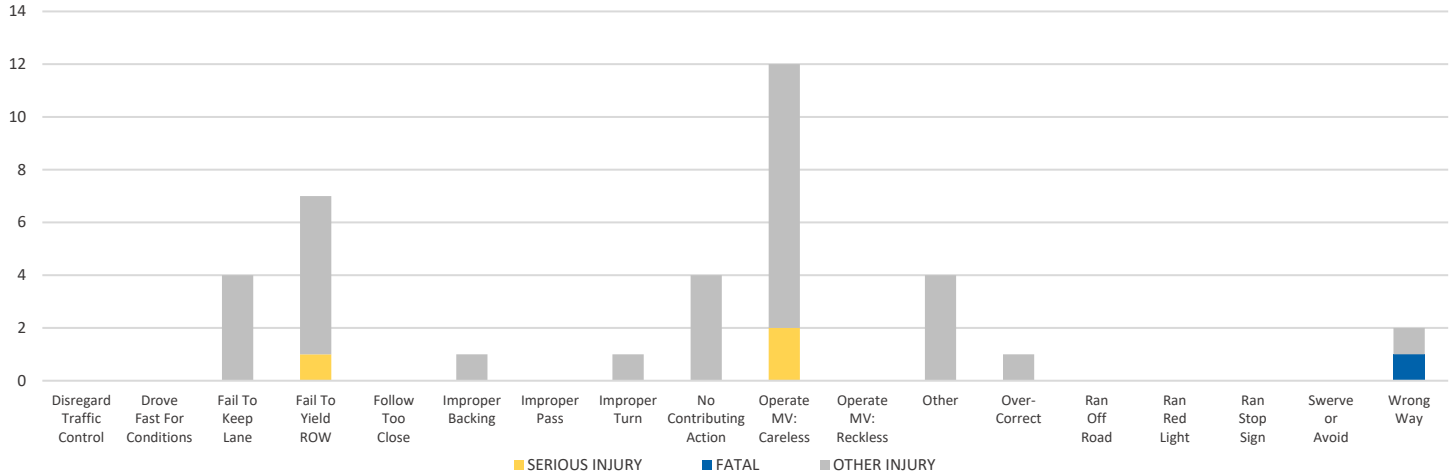


IMPAIRED



\*Involving alcohol and/or drugs by either driver.

CAUSE OF CRASH



NOTE: Fatal/Serious/Other Injury in bar graphs indicates persons not crashes.

SOURCE: 2021 CARS data (unofficial at time of report)

DATE GENERATED: 1/31/2022