

District 2 Community Traffic Safety Program

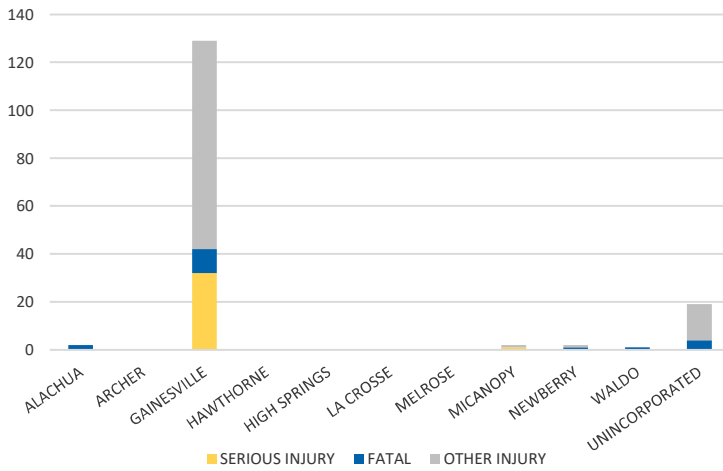
ALACHUA COUNTY 2021 Pedestrian Crash Data Summary



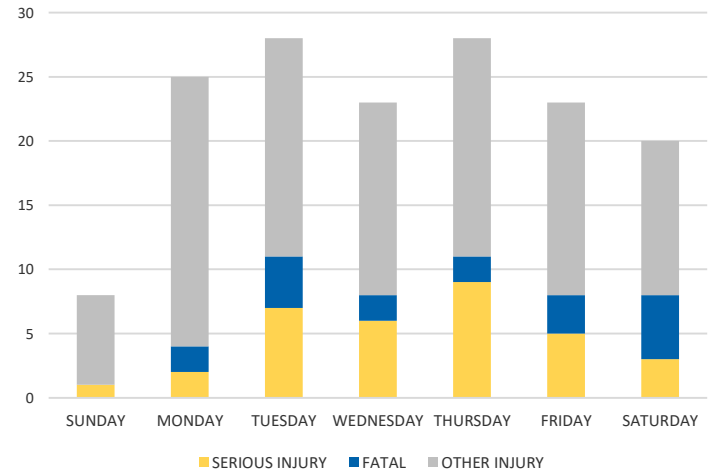
| Severity | ALACHUA COUNTY | | | | | DISTRICT 2 | |
|----------------|----------------|-----------------------|---------------------------|-----------------|----------------------------------|------------|-------|
| | Fatal | Incapacitating Injury | Non-Incapacitating Injury | Possible Injury | No Injury/ Property Damage Only* | Total | |
| Crashes | 15 | 23 | 43 | 37 | 44 | 162 | 1,044 |
| People Injured | 18 | 33 | 51 | 53 | N/A | 155 | 875 |

Note: Crash severity is determined from the highest injury type in the crash (i.e. if a crash had both a fatal and a serious it is determined to be a fatal crash).

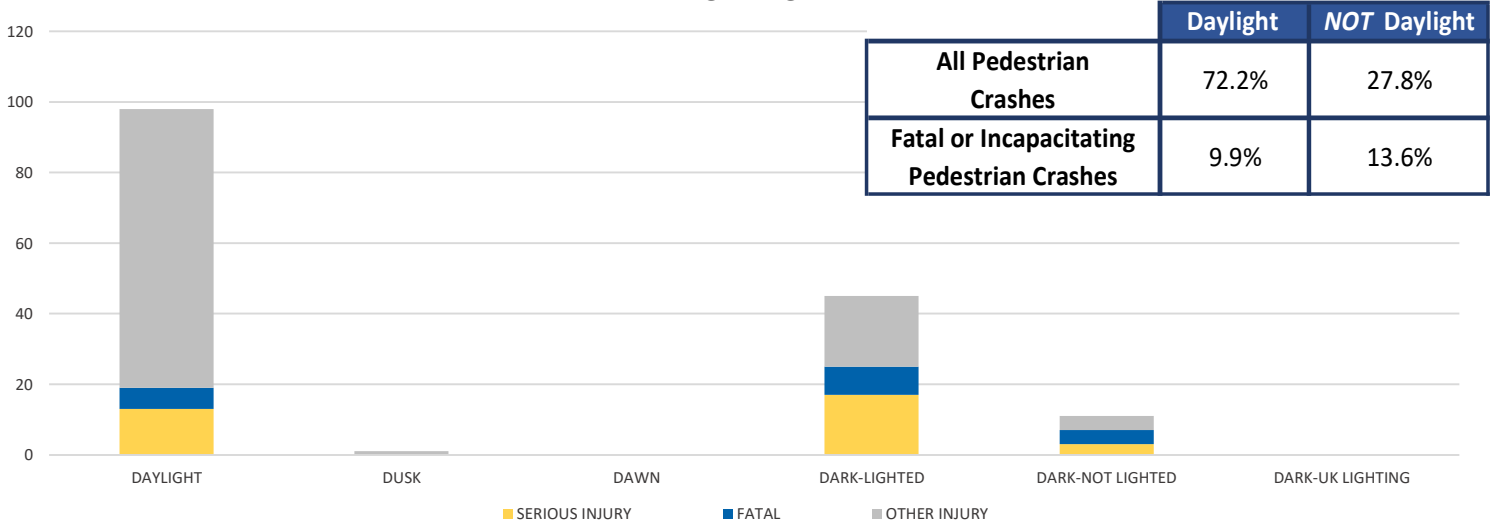
CITY



DAY OF WEEK



LIGHTING



| | Daylight | NOT Daylight |
|--|----------|--------------|
| All Pedestrian Crashes | 72.2% | 27.8% |
| Fatal or Incapacitating Pedestrian Crashes | 9.9% | 13.6% |

NOTE: Fatal/Serious/Other Injury in bar graphs indicates persons not crashes.
SOURCES: 2021 CARS data (unofficial at time of report)

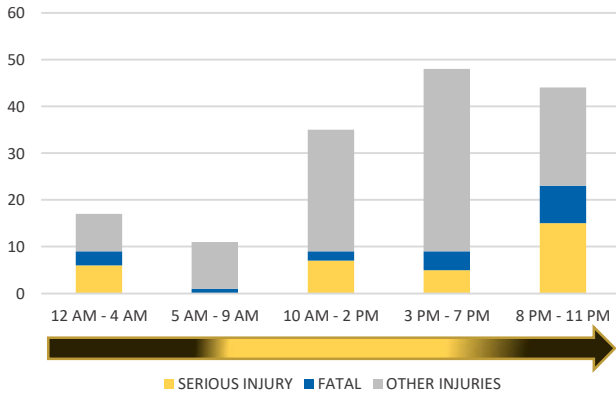
District 2 Community Traffic Safety Program

ALACHUA COUNTY

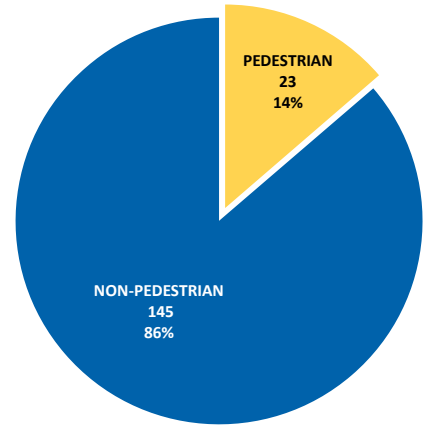
2021 Pedestrian Crash Data Summary



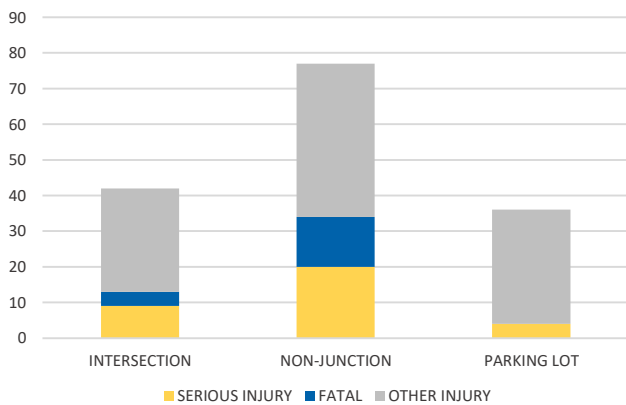
TIME OF DAY



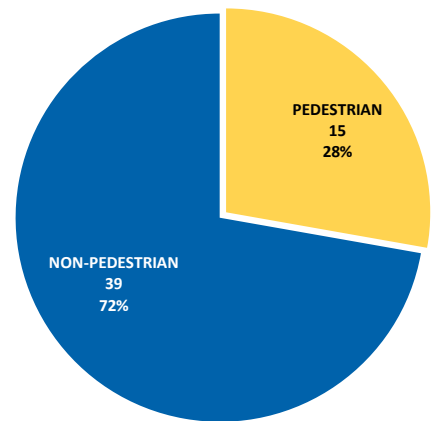
PEDESTRIAN SERIOUS INJURY CRASHES VS TOTAL SERIOUS INJURY CRASHES



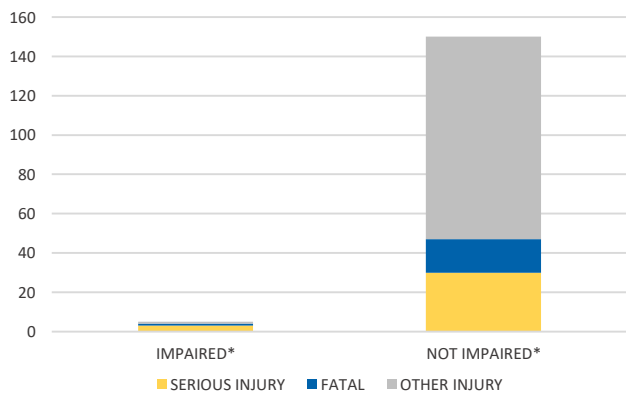
LOCATION ON ROADWAY



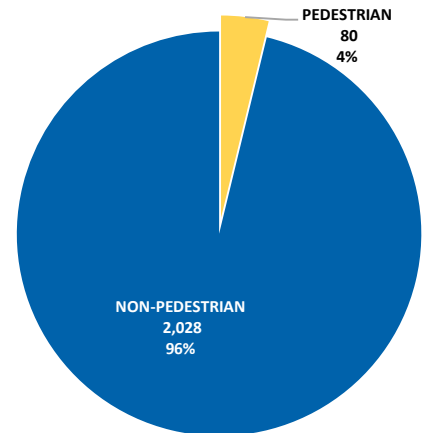
PEDESTRIAN FATAL CRASHES VS TOTAL FATAL CRASHES



IMPAIRED



PEDESTRIAN OTHER INJURY CRASHES VS TOTAL OTHER INJURY CRASHES



*Involving alcohol and/or drugs by pedestrian and/or driver.