

District 2 Community Traffic Safety Program

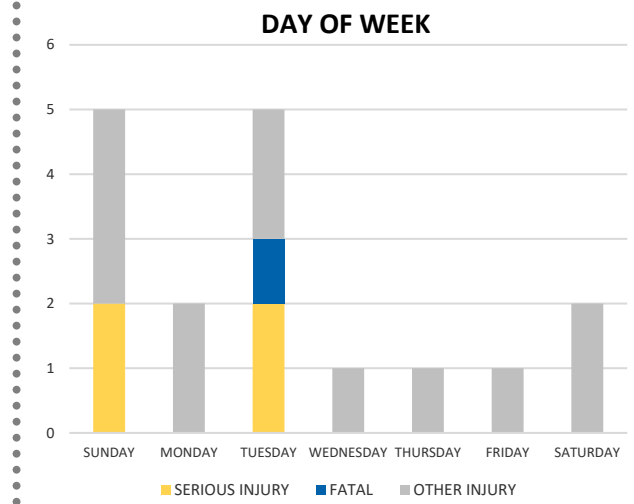
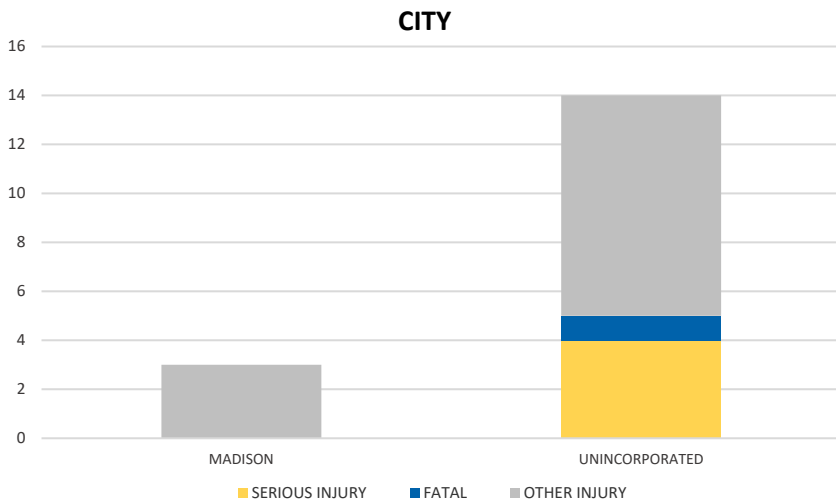
# MADISON COUNTY 2020 Aging Road User Crash Data Summary



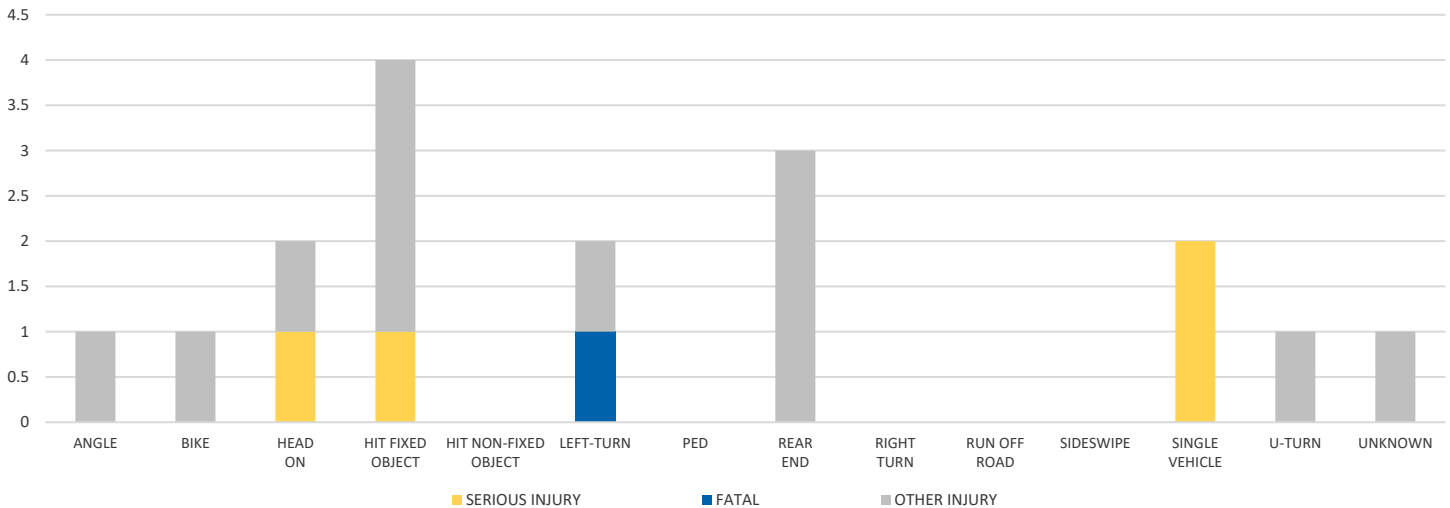
Crash numbers may vary in comparison to previous year(s) due to COVID-19 lockdowns in 2020.

Severity	Madison County					District 2	
	Fatal	Incapacitating Injury	Non-Incapacitating Injury	Possible Injury	No Injury/Property Damage Only*	Total	
Crashes	1	4	5	6	65	81	9,764
People Injured	1	4	6	6	N/A	17	4,102

Note: Crash severity is determined from the highest injury type in the crash (i.e. if a crash had both a fatal and a serious it is determined to be a fatal crash).



### CRASH TYPE



NOTE: Fatal/Serious/Other Injury in bar graphs indicates persons not crashes.

SOURCE: 2020 CARS data (unofficial at time of report)

DATE GENERATED: 3/25/2021

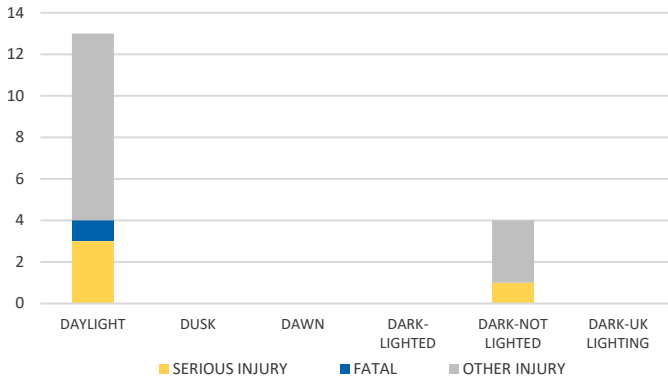
District 2 Community Traffic Safety Program

# MADISON COUNTY 2020 Aging Road User Crash Data Summary

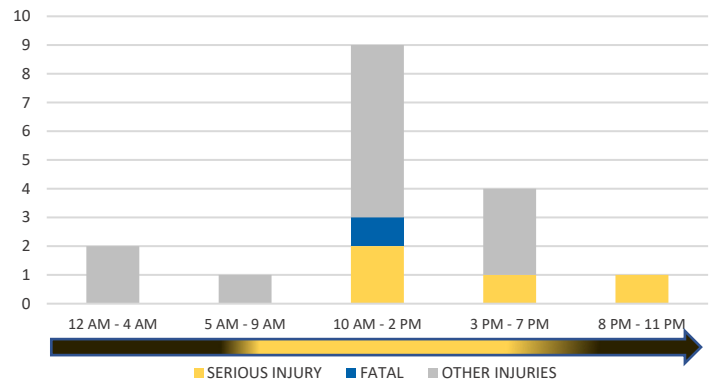


Crash numbers may vary in comparison to previous year(s) due to COVID-19 lockdowns in 2020.

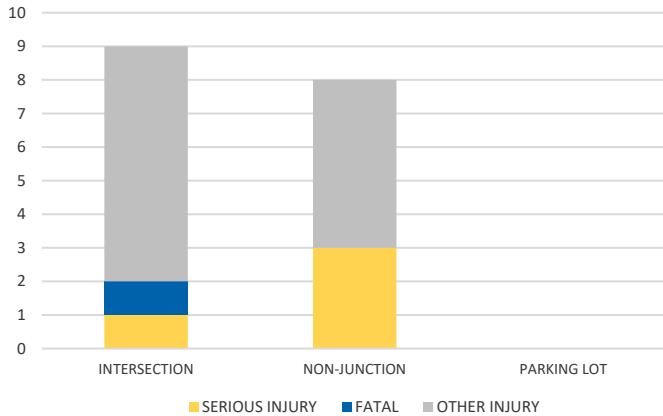
**LIGHTING**



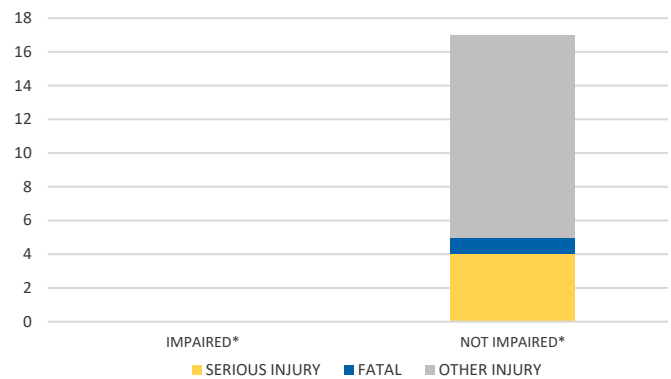
**TIME OF DAY**



**LOCATION ON ROADWAY**

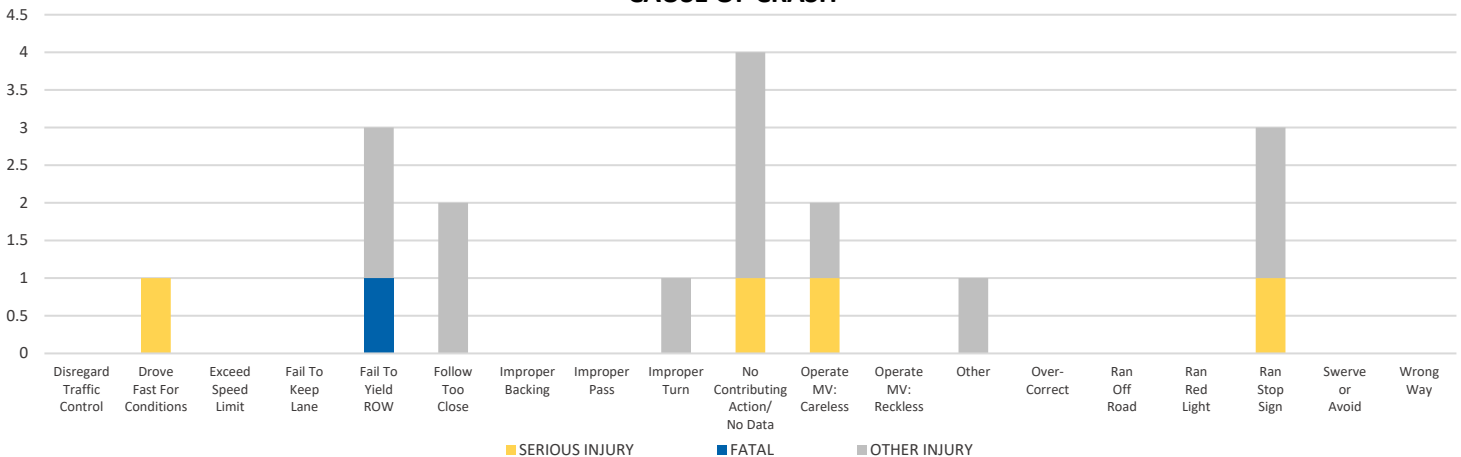


**IMPAIRED**



\*Involving alcohol and/or drugs by either driver.

**CAUSE OF CRASH**



NOTE: Fatal/Serious/Other Injury in bar graphs indicates persons not crashes.

SOURCE: 2020 CARS data (unofficial at time of report)

DATE GENERATED: 3/25/2021