

District 2 Community Traffic Safety Program

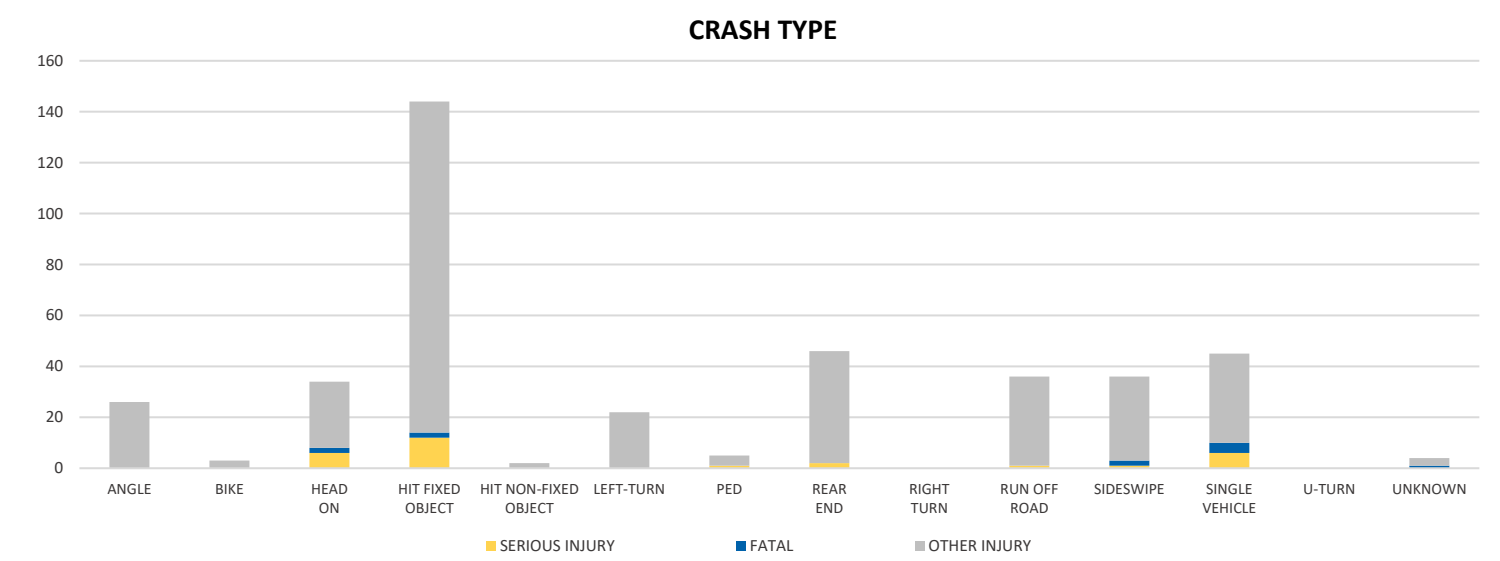
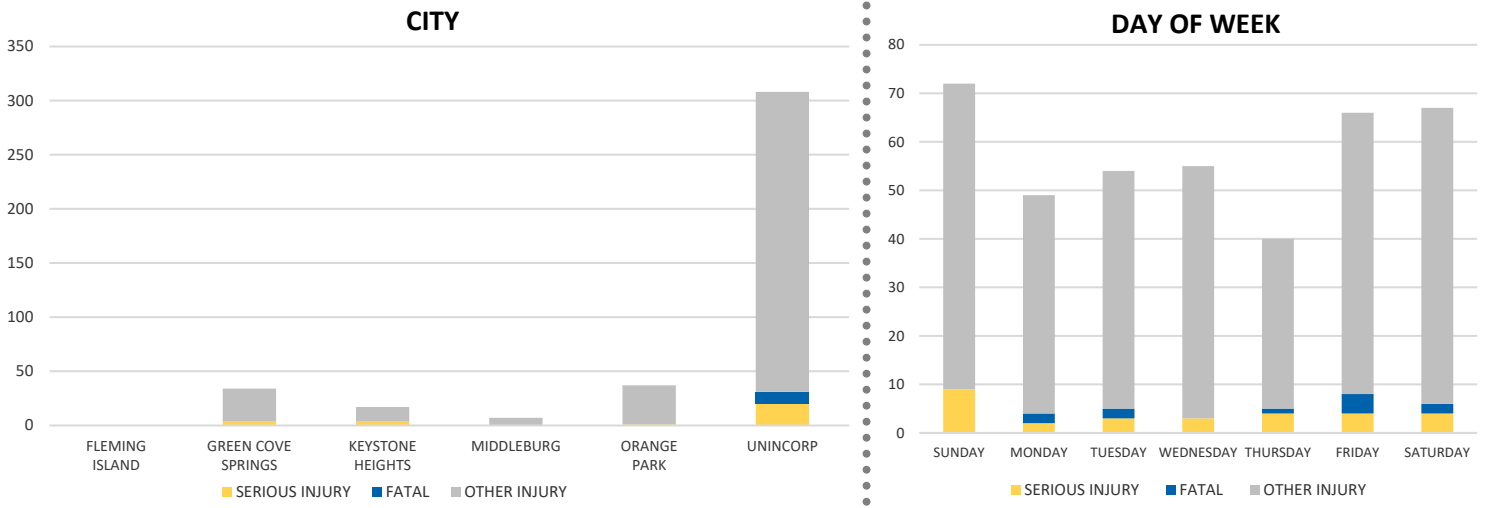
CLAY COUNTY 2020 Lane Departure Crash Data Summary



Crash numbers may vary in comparison to previous year(s) due to COVID-19 lockdowns in 2020.

Severity	Clay County					District 2	
	Fatal	Incapacitating Injury	Non-Incapacitating Injury	Possible Injury	No Injury/Property Damage Only*	Total	
Crashes	10	28	116	140	1,275	1,569	23,941
People Injured	11	29	154	209	N/A	403	7,955

Note: Crash severity is determined from the highest injury type in the crash (i.e. if a crash had both a fatal and a serious it is determined to be a fatal crash).



NOTE: Fatal/Serious/Other Injury in bar graphs indicates persons not crashes.
SOURCE: 2020 CARS data (unofficial at time of report)

District 2 Community Traffic Safety Program

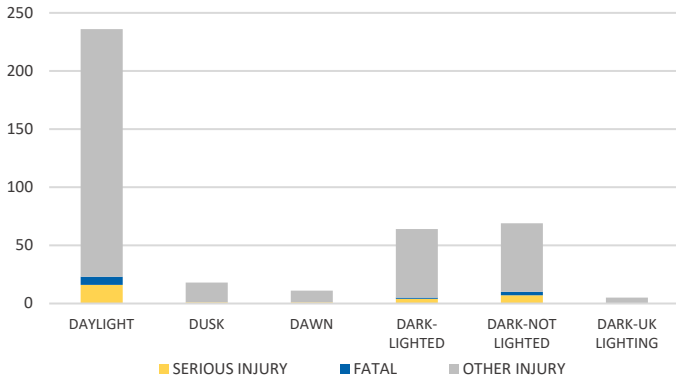
CLAY COUNTY

2020 Lane Departure Crash Data Summary

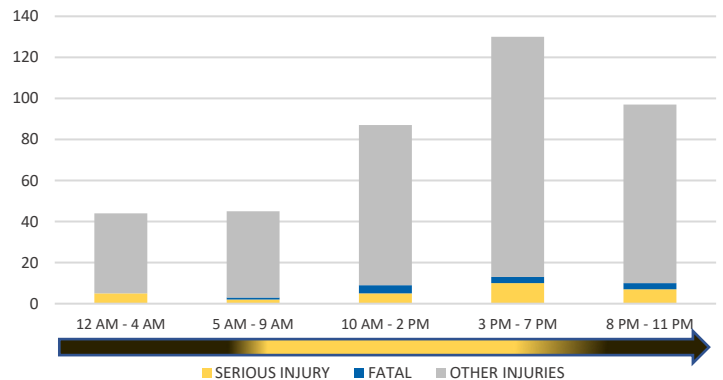


Crash numbers may vary in comparison to previous year(s) due to COVID-19 lockdowns in 2020.

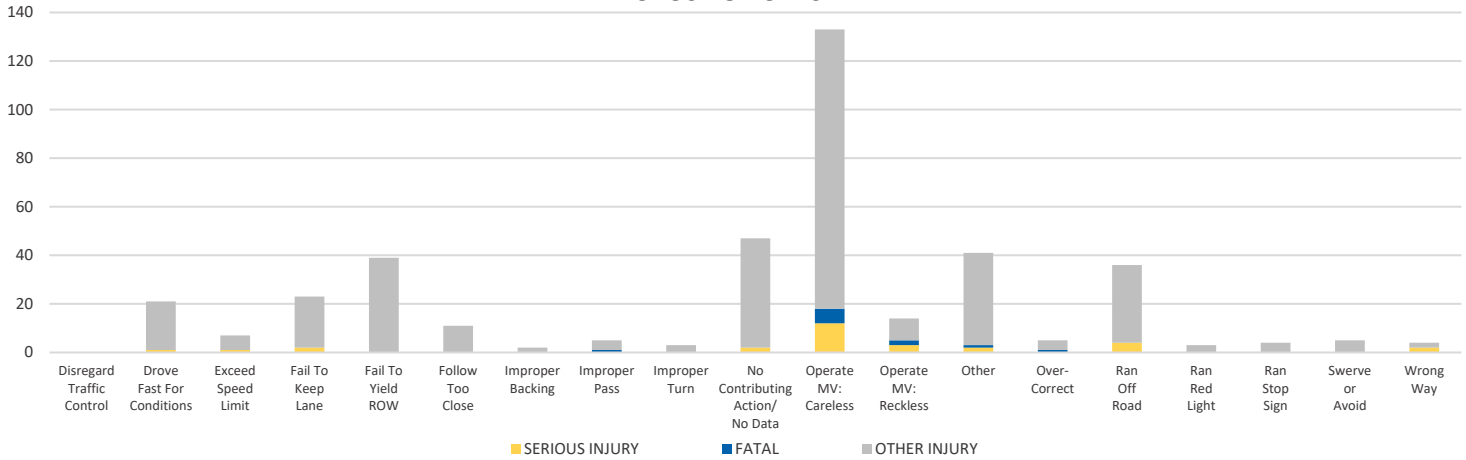
LIGHTING



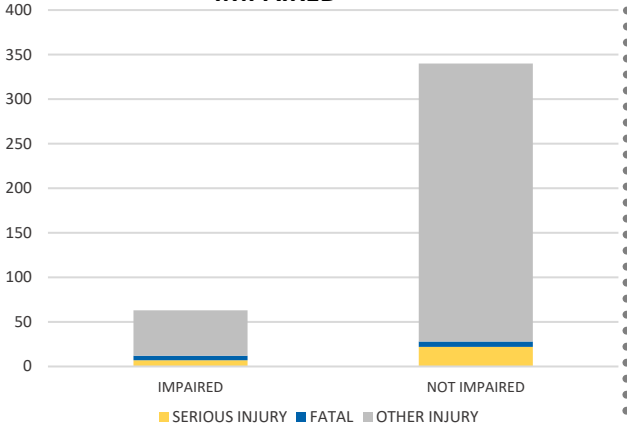
TIME OF DAY



CAUSE OF CRASH



IMPAIRED



ROAD CLASSIFICATION	2-LANE	MULTILANE	OTHER	TOTAL
INTERSTATE/EXPRESSWAY	N/A	6	N/A	6
URBAN	36	163	N/A	199
SUBURBAN	5	5	N/A	10
RURAL	22	14	N/A	36
PARKING LOT	N/A	N/A	579	579
UNDOCUMENTED	N/A	N/A	738	738
ON- & OFF-RAMP	N/A	N/A	1	1
TOTAL	63	188	1,318	1,569

NOTE: Fatal/Serious/Other Injury in bar graphs indicates persons not crashes.

SOURCE: 2020 CARS data (unofficial at time of report)

DATE GENERATED: 3/24/2021