

District 2 Community Traffic Safety Program



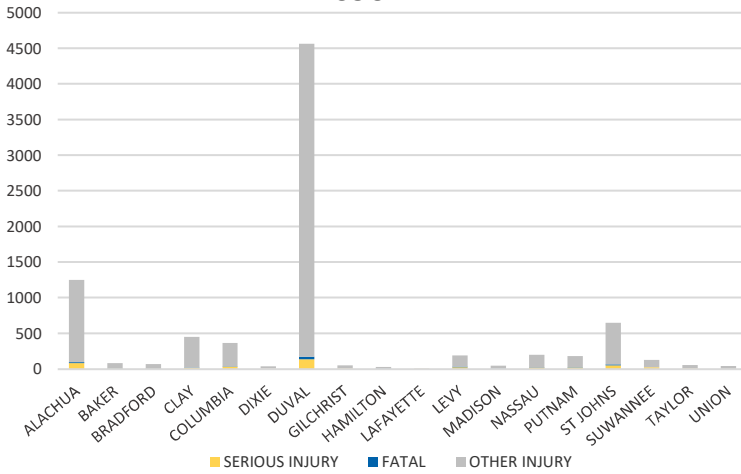
DISTRICTWIDE 2020 Intersection Crash Data Summary

Crash numbers may vary in comparison to previous year(s) due to COVID-19 lockdowns in 2020.

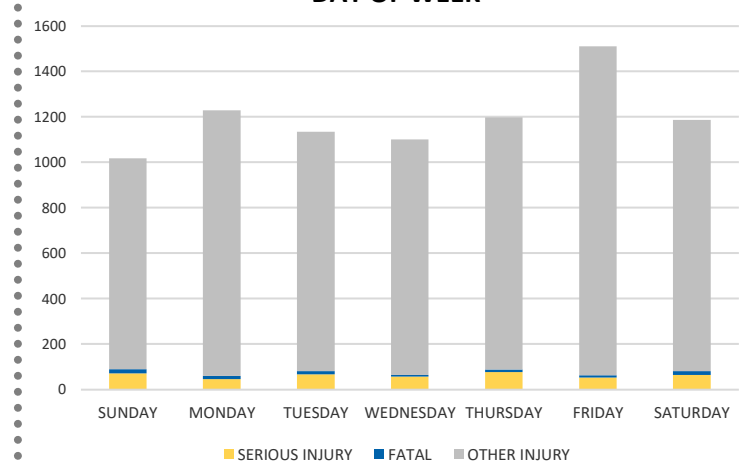
Severity	District 2					Statewide	
	Fatal	Incapacitating Injury	Non-Incapacitating Injury	Possible Injury	No Injury/Property Damage Only*	Total	
Crashes	83	348	1,775	3,179	10,007	15,392	154,566
People Injured	91	432	2,496	5,358	N/A	8,377	81,341

Note: Crash severity is determined from the highest injury type in the crash (i.e. if a crash had both a fatal and a serious it is determined to be a fatal crash).

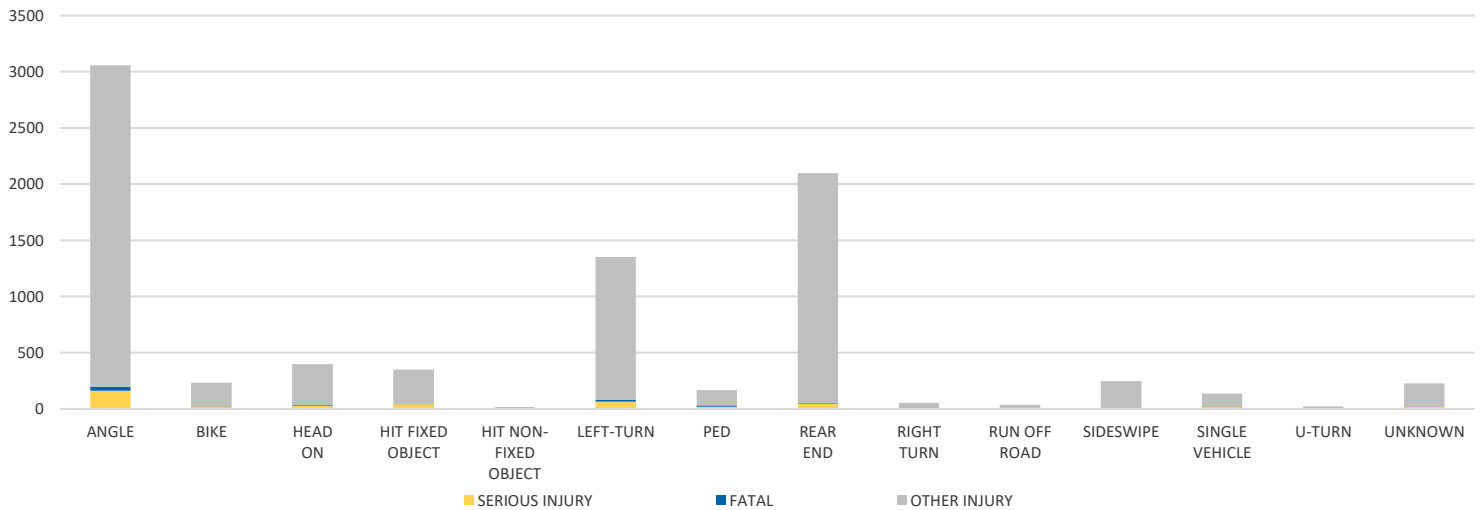
COUNTY



DAY OF WEEK



CRASH TYPE



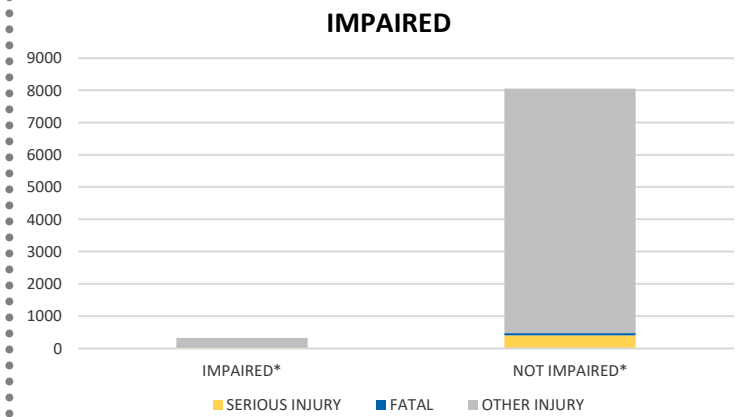
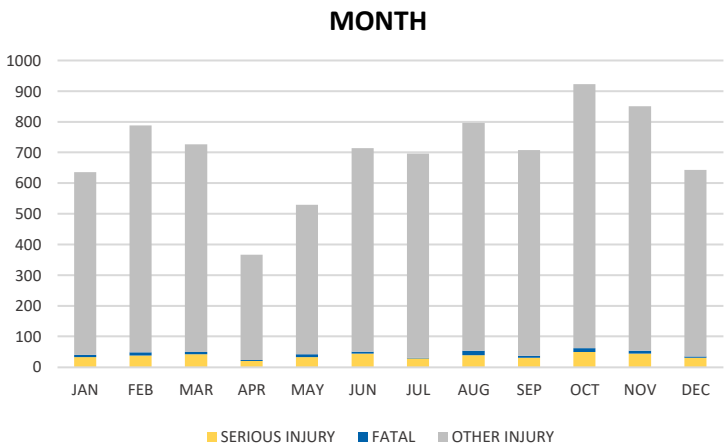
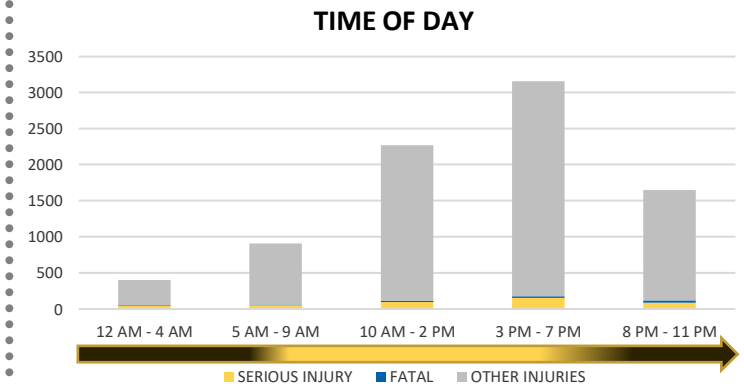
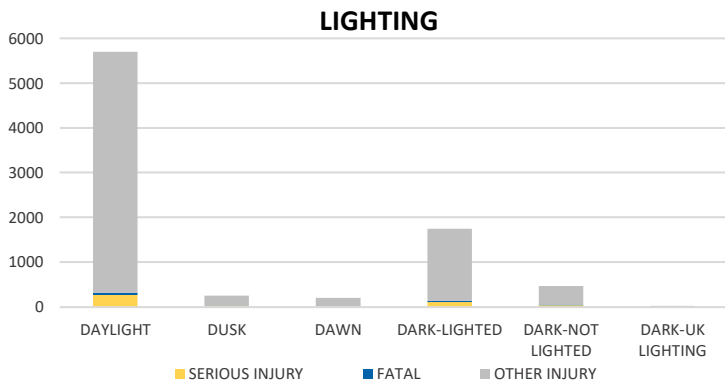
NOTE: Fatal/Serious/Other Injury in bar graphs indicates persons not crashes.
SOURCES: 2020 CARS data (unofficial at time of report)

District 2 Community Traffic Safety Program



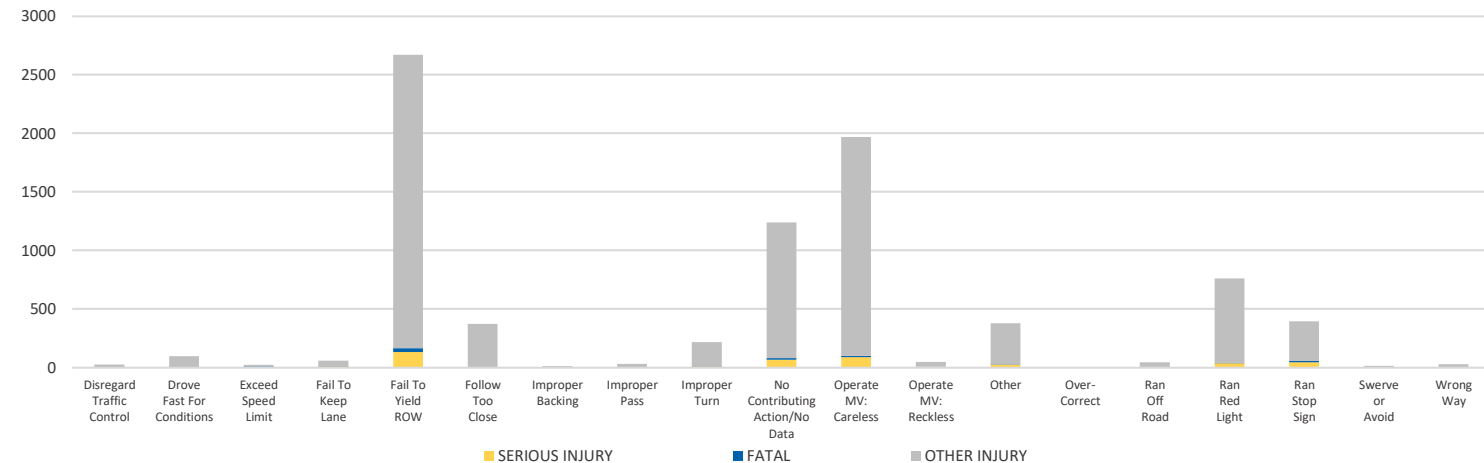
DISTRICTWIDE 2020 Intersection Crash Data Summary

Crash numbers may vary in comparison to previous year(s) due to COVID-19 lockdowns in 2020.



*Involving alcohol and/or drugs by either driver.

DRIVER CAUSE OF CRASH



NOTE: Fatal/Serious/Other Injury in bar graphs indicates persons not crashes.

SOURCES: 2020 CARS data (unofficial at time of report)