

District 2 Community Traffic Safety Program

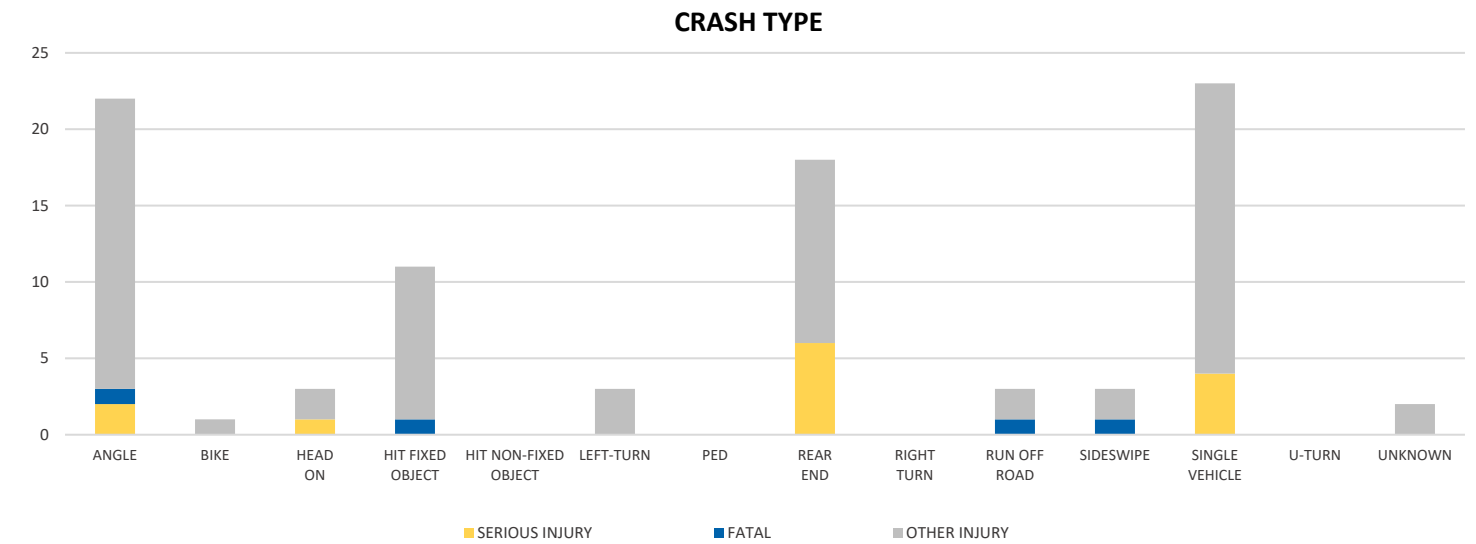
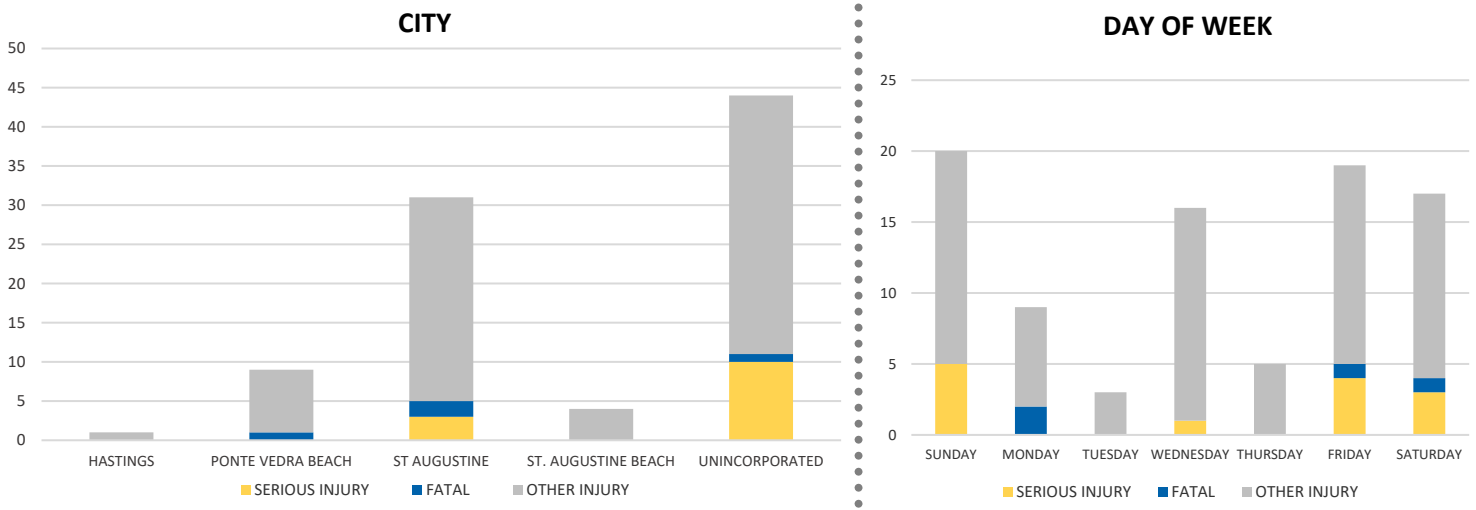
# ST JOHNS COUNTY 2020 Motorcycle Crash Data Summary



Crash numbers may vary in comparison to previous year(s) due to COVID-19 lockdowns in 2020.

Severity	St Johns County					District 2	
	Fatal	Incapacitating Injury	Non-Incapacitating Injury	Possible Injury	No Injury/Property Damage Only*	Total	
Crashes	4	11	38	17	25	95	811
People Injured	4	13	44	28	N/A	89	727

Note: Crash severity is determined from the highest injury type in the crash (i.e. if a crash had both a fatal and a serious it is determined to be a fatal crash).



NOTE: Fatal/Serious/Other Injury in bar graphs indicates persons not crashes.

SOURCE: 2020 CARS data (unofficial at time of report)

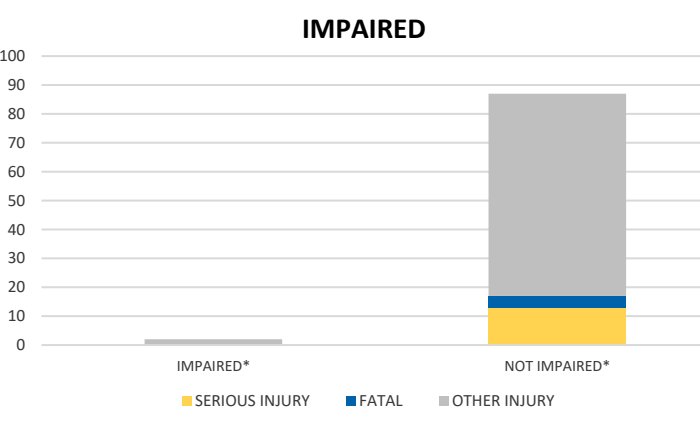
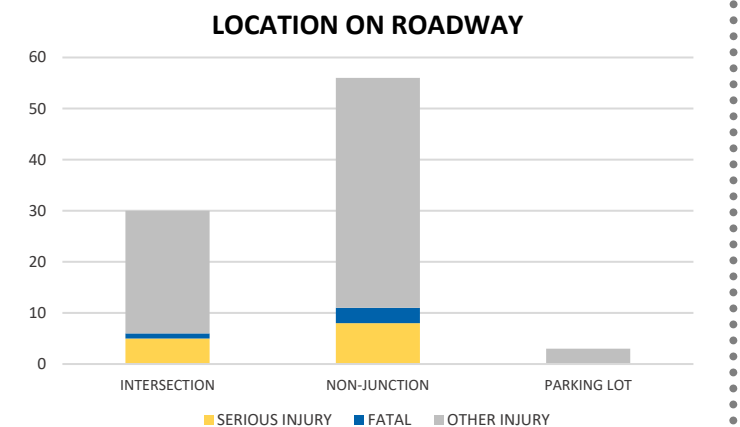
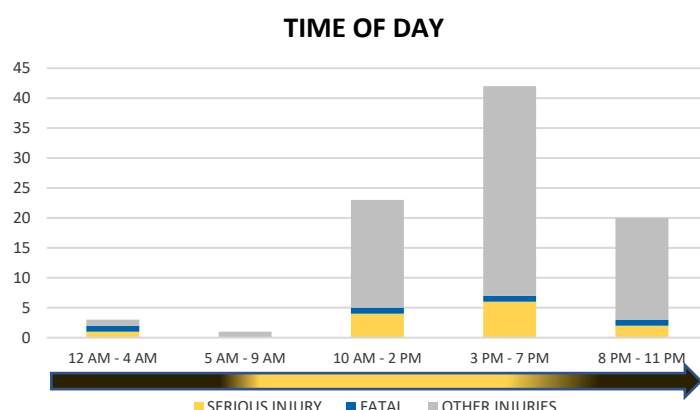
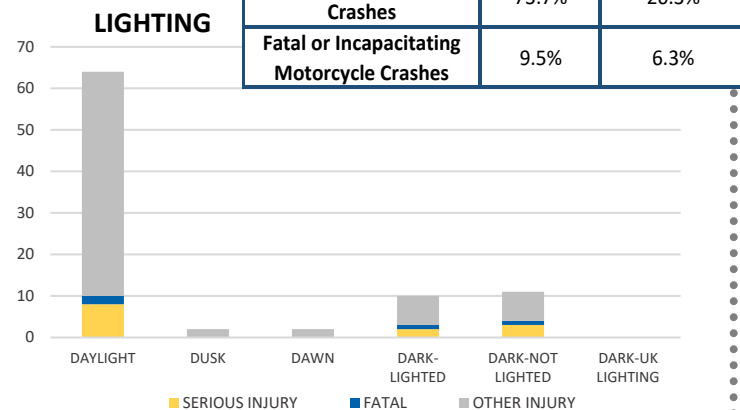
DATE GENERATED: 1/29/2021

District 2 Community Traffic Safety Program

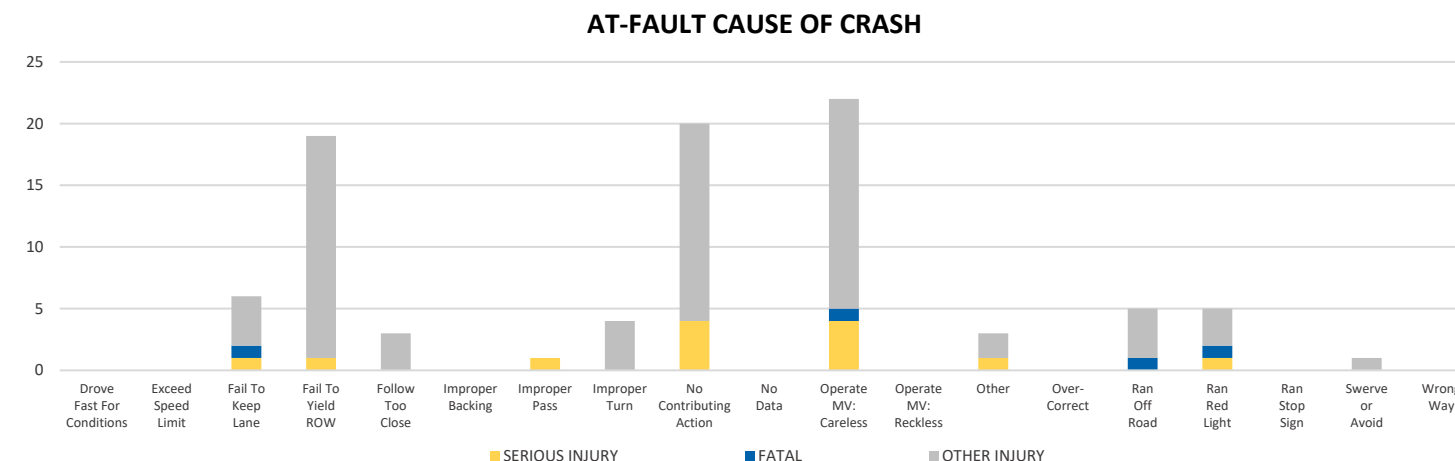
# ST JOHNS COUNTY 2020 Motorcycle Crash Data Summary



	Daylight	NOT Daylight
<b>All Motorcycle Crashes</b>	73.7%	26.3%
<b>Fatal or Incapacitating Motorcycle Crashes</b>	9.5%	6.3%



\*Involving alcohol and/or drugs by either driver.



NOTE: Fatal/Serious/Other Injury in bar graphs indicates persons not crashes.

SOURCE: 2020 CARS data (unofficial at time of report)

DATE GENERATED: 1/29/2021