

District 2 Community Traffic Safety Program

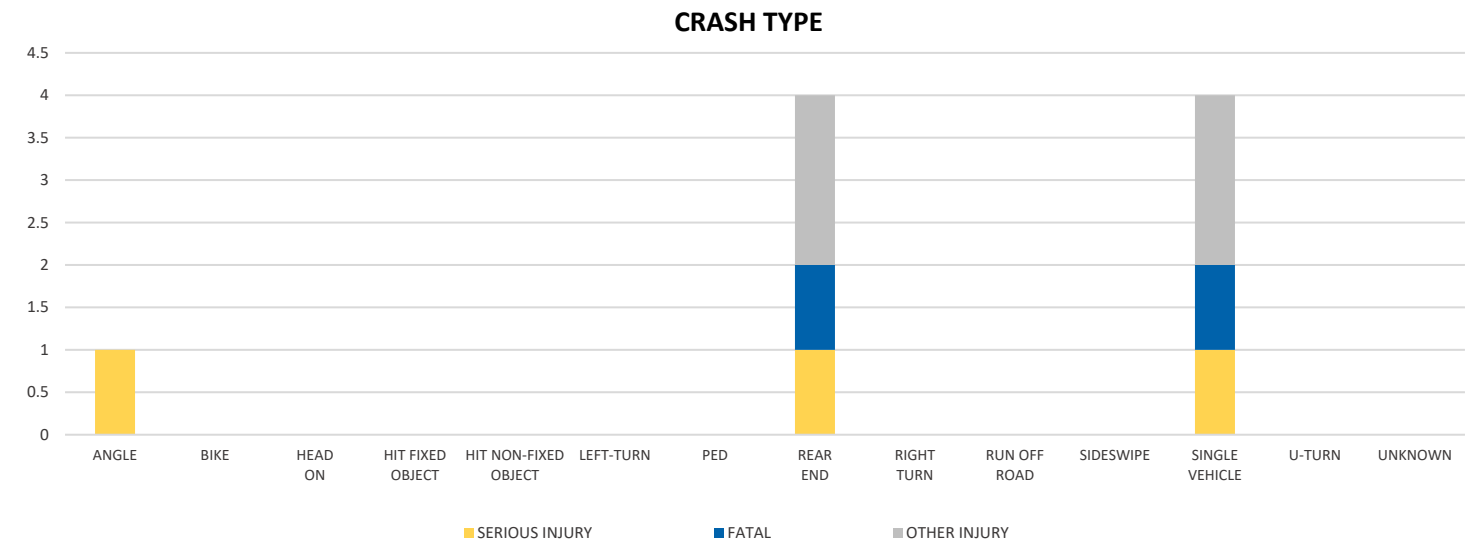
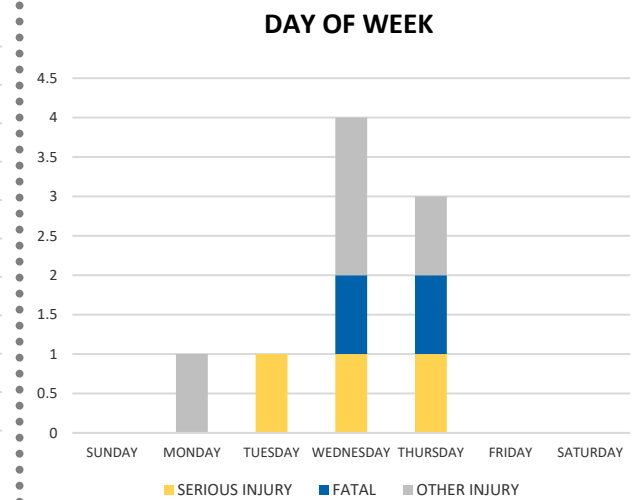
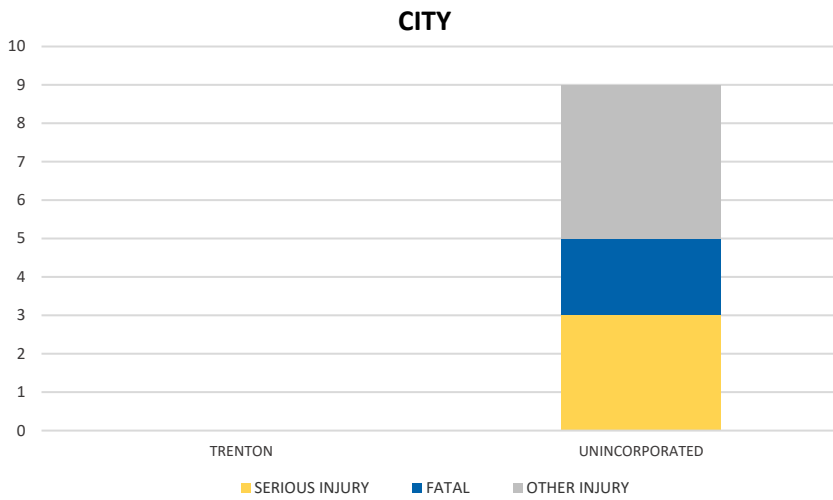
# GILCHRIST COUNTY 2020 Motorcycle Crash Data Summary



Crash numbers may vary in comparison to previous year(s) due to COVID-19 lockdowns in 2020.

Severity	Gilchrist County					District 2	
	Fatal	Incapacitating Injury	Non-Incapacitating Injury	Possible Injury	No Injury/Property Damage Only*	Total	
Crashes	2	1	3	0	0	6	811
People Injured	2	3	4	0	N/A	9	727

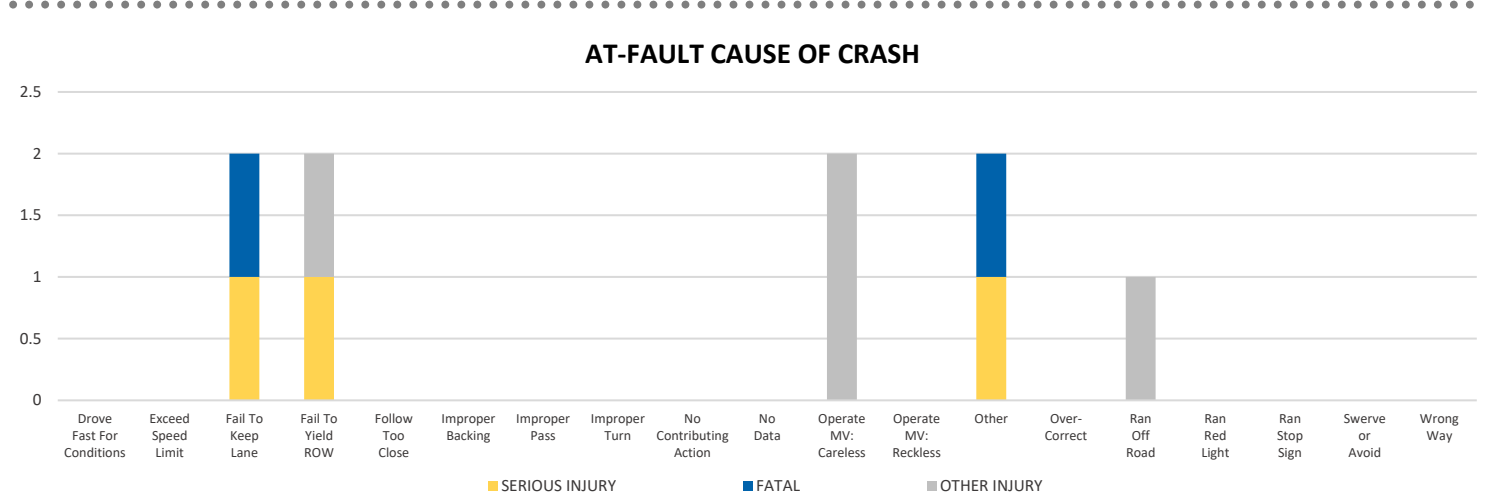
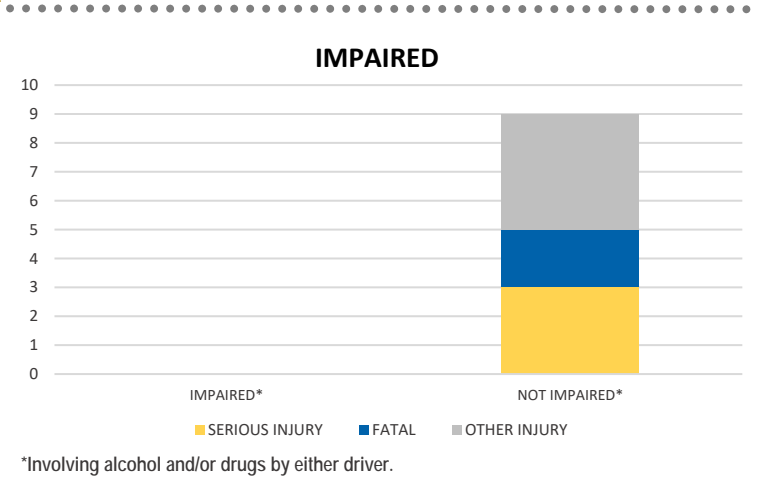
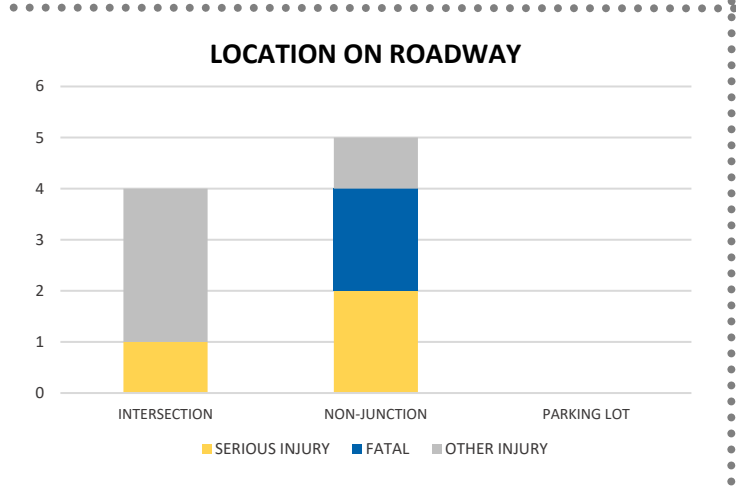
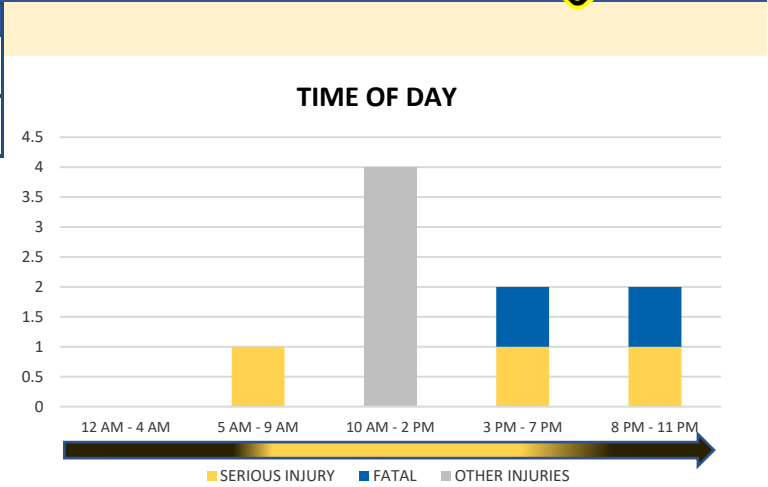
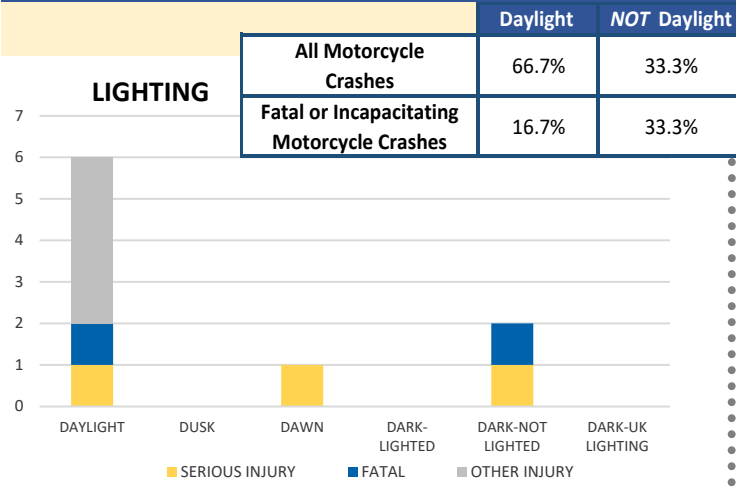
Note: Crash severity is determined from the highest injury type in the crash (i.e. if a crash had both a fatal and a serious it is determined to be a fatal crash).



NOTE: Fatal/Serious/Other Injury in bar graphs indicates persons not crashes.  
SOURCE: 2020 CARS data (unofficial at time of report)

District 2 Community Traffic Safety Program

# GILCHRIST COUNTY 2020 Motorcycle Crash Data Summary



NOTE: Fatal/Serious/Other Injury in bar graphs indicates persons not crashes.  
SOURCE: 2020 CARS data (unofficial at time of report)