

District 2 Community Traffic Safety Program

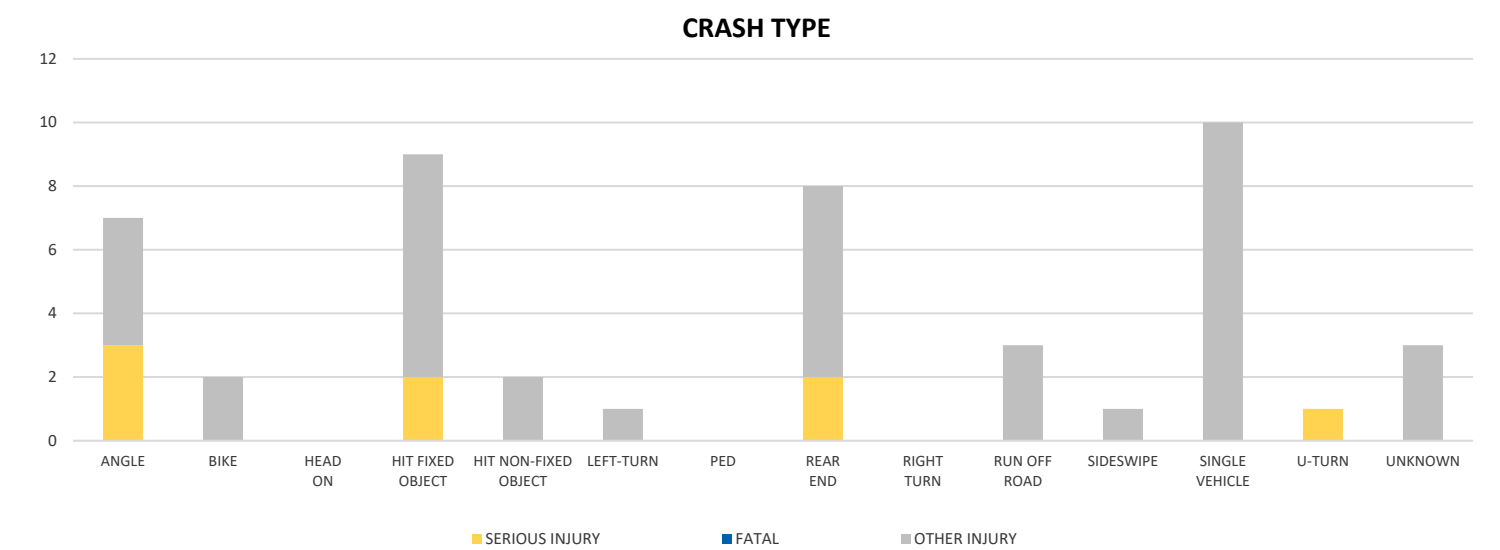
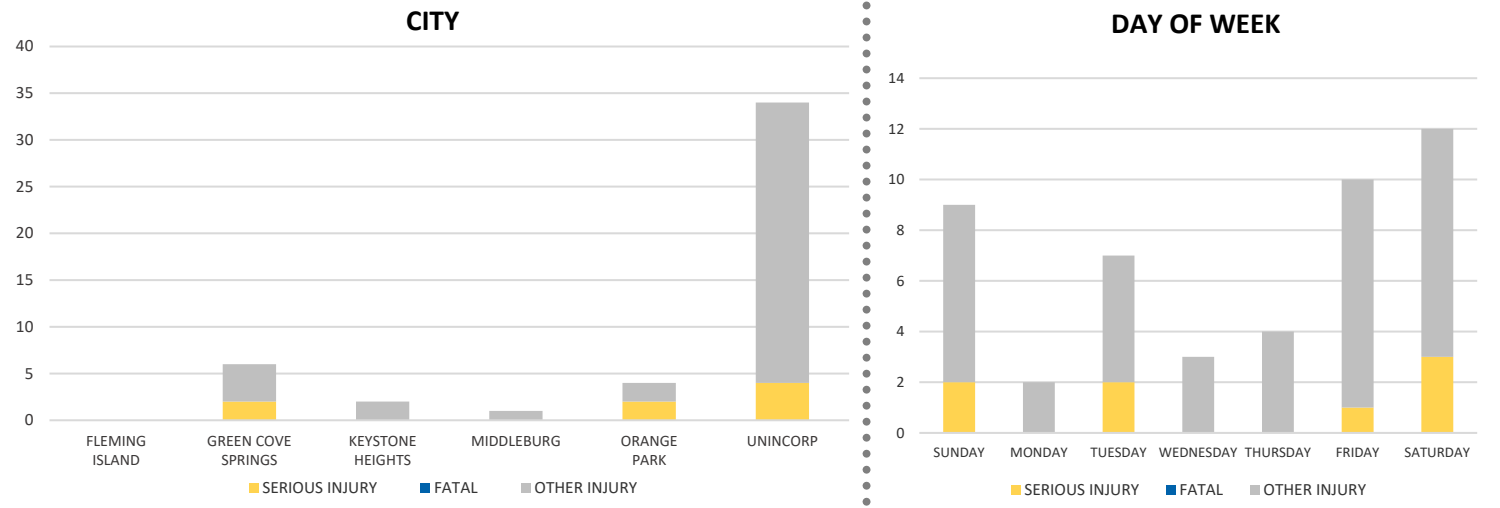
CLAY COUNTY 2020 Motorcycle Crash Data Summary



Crash numbers may vary in comparison to previous year(s) due to COVID-19 lockdowns in 2020.

Severity	Clay County					District 2	
	Fatal	Incapacitating Injury	Non-Incapacitating Injury	Possible Injury	No Injury/Property Damage Only*	Total	
Crashes	0	8	23	10	18	59	811
People Injured	0	8	26	13	N/A	47	727

Note: Crash severity is determined from the highest injury type in the crash (i.e. if a crash had both a fatal and a serious it is determined to be a fatal crash).



NOTE: Fatal/Serious/Other Injury in bar graphs indicates persons not crashes.

SOURCE: 2020 CARS data (unofficial at time of report)

DATE GENERATED: 1/28/2021

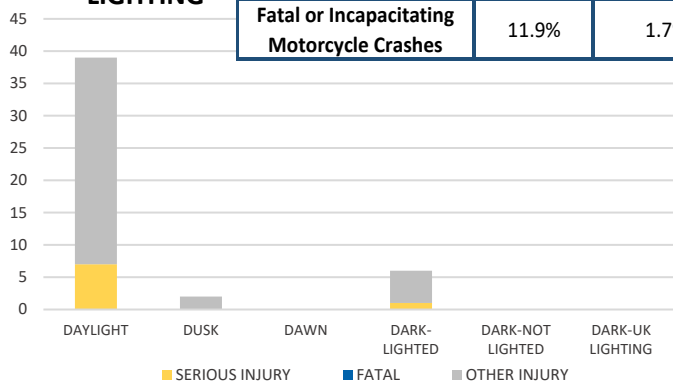
District 2 Community Traffic Safety Program

CLAY COUNTY 2020 Motorcycle Crash Data Summary

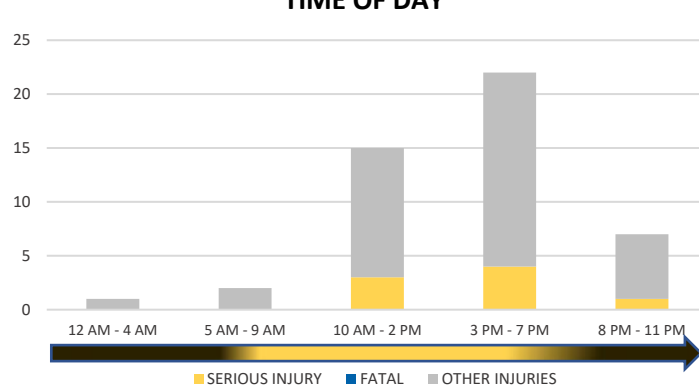


	Daylight	NOT Daylight
All Motorcycle Crashes	81.4%	18.6%
Fatal or Incapacitating Motorcycle Crashes	11.9%	1.7%

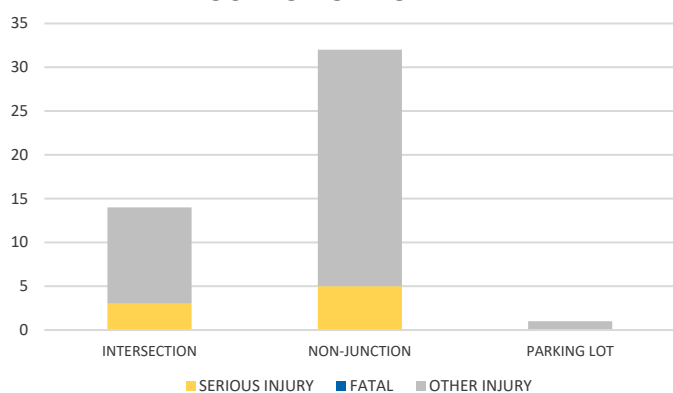
LIGHTING



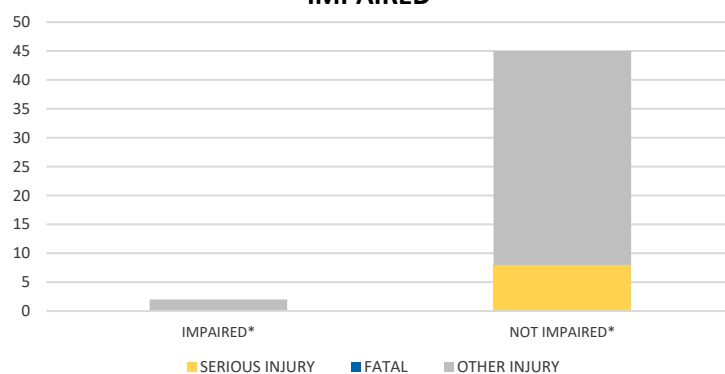
TIME OF DAY



LOCATION ON ROADWAY

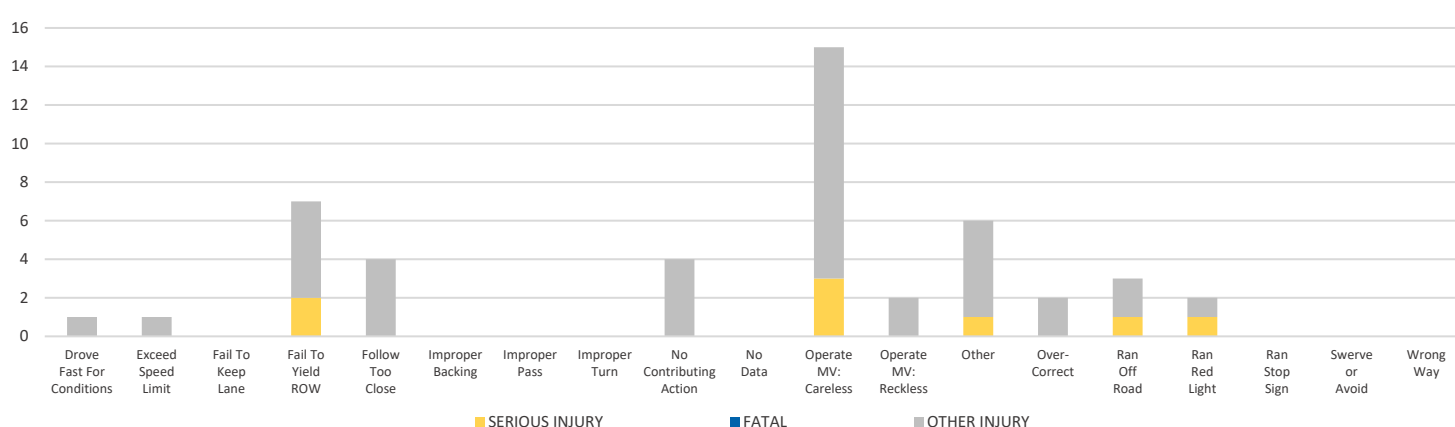


IMPAIRED



*Involving alcohol and/or drugs by either driver.

AT-FAULT CAUSE OF CRASH



NOTE: Fatal/Serious/Other Injury in bar graphs indicates persons not crashes.

SOURCE: 2020 CARS data (unofficial at time of report)

DATE GENERATED: 1/28/2021