

District 2 Community Traffic Safety Program

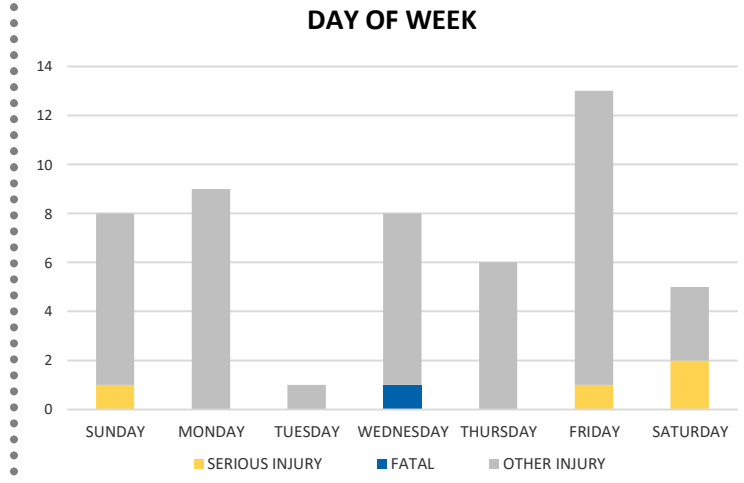
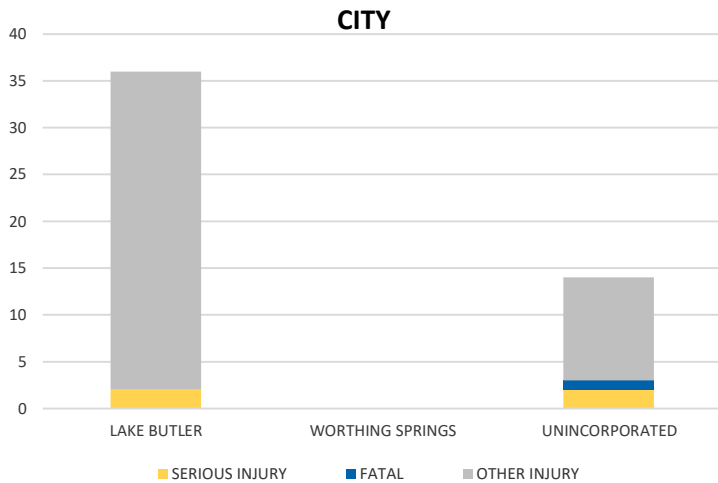


UNION COUNTY 2020 Rural Road Crash Data Summary

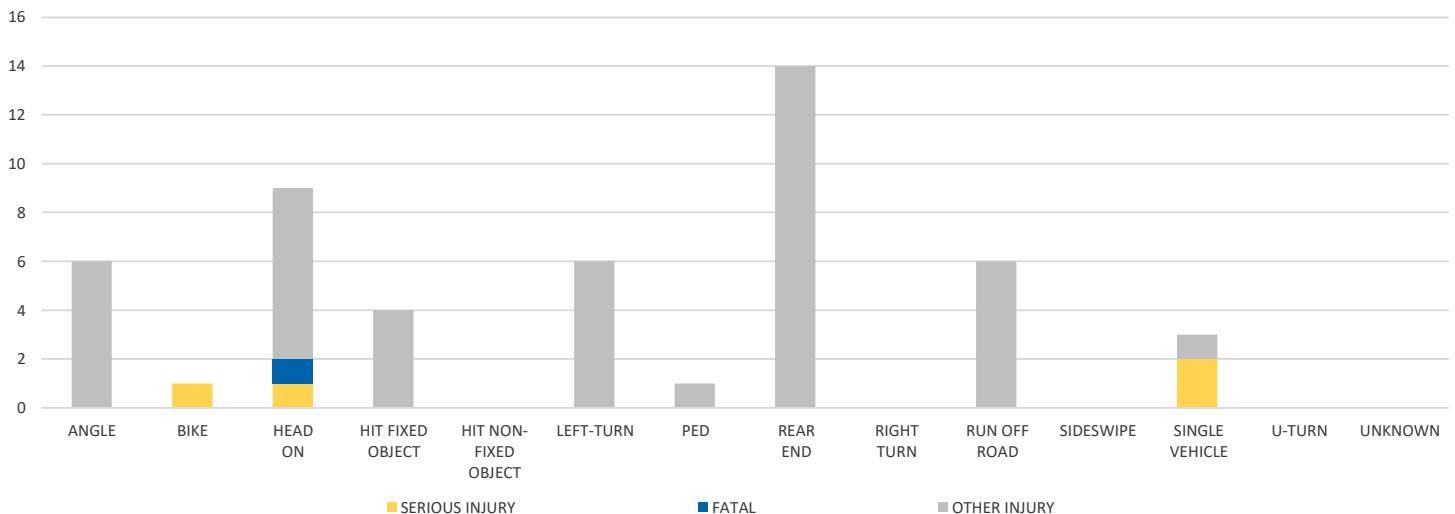
Crash numbers may vary in comparison to previous year(s) due to COVID-19 lockdowns in 2020.

Severity	Union County					District 2	
	Fatal	Incapacitating Injury	Non-Incapacitating Injury	Possible Injury	No Injury/ Property Damage Only	Total	
Crashes	1	4	7	17	33	62	2,886
People Injured	1	4	9	36	N/A	50	2,098

Note: Crash severity is determined from the highest injury type in the crash (i.e. if a crash had both a fatal and a serious it is determined to be a fatal crash).



CRASH TYPE



NOTE: Fatal/Serious/Other Injury in bar graphs indicates persons not crashes.

SOURCES: 2020 CARS data (unofficial at time of report)

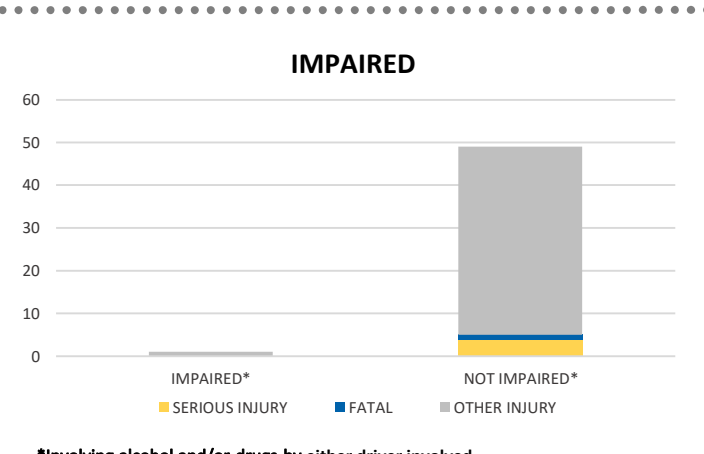
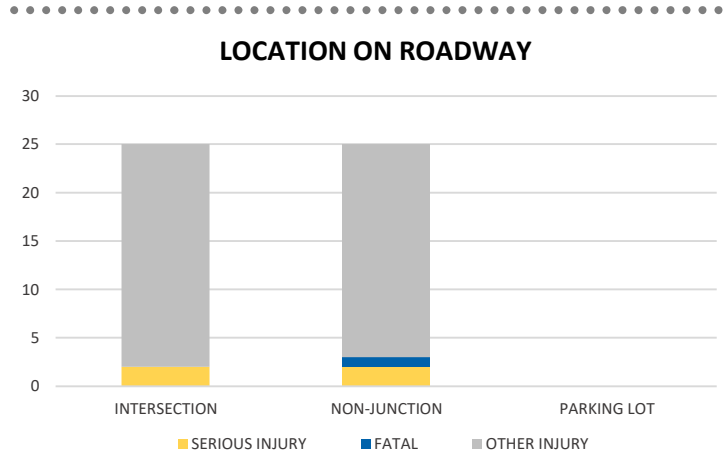
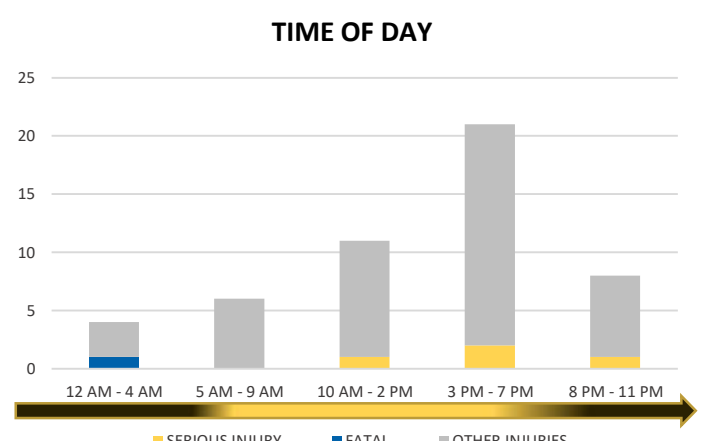
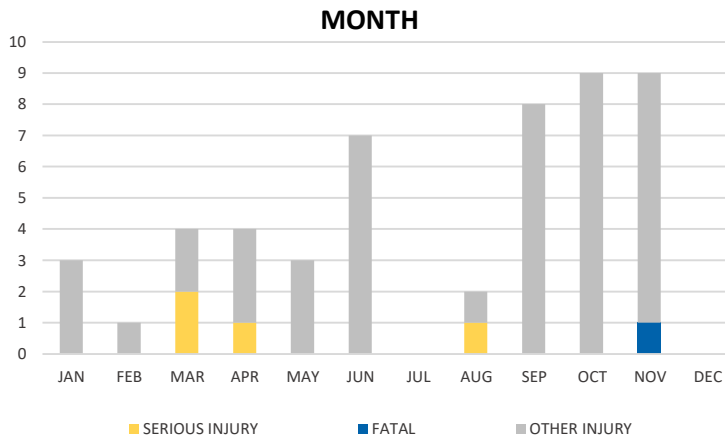
DATE GENERATED: 12/22/2020

District 2 Community Traffic Safety Program

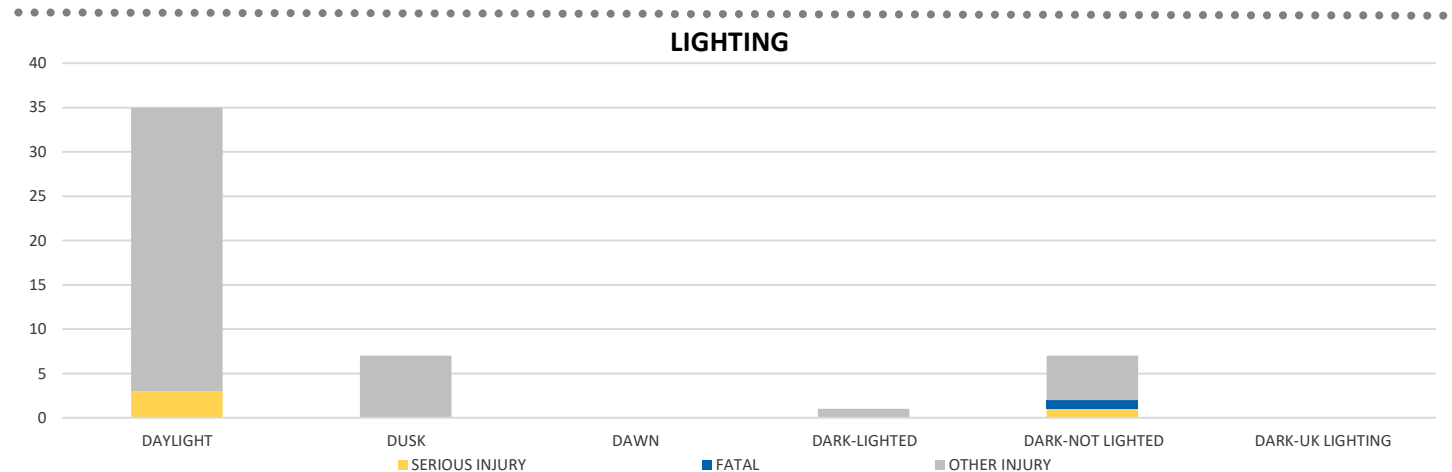


UNION COUNTY 2020 Rural Road Crash Data Summary

Crash numbers may vary in comparison to previous year(s) due to COVID-19 lockdowns in 2020.



*Involving alcohol and/or drugs by either driver involved.



NOTE: Fatal/Serious/Other Injury in bar graphs indicates persons not crashes.
 SOURCES: 2020 CARS data (unofficial at time of report)