

District 2 Community Traffic Safety Program

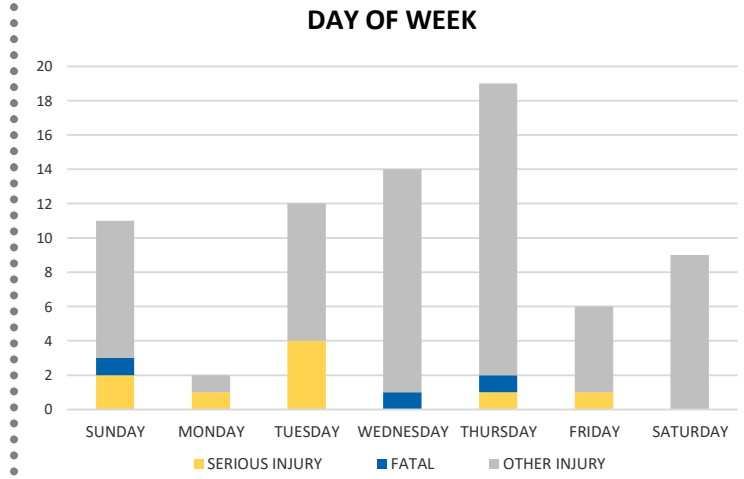
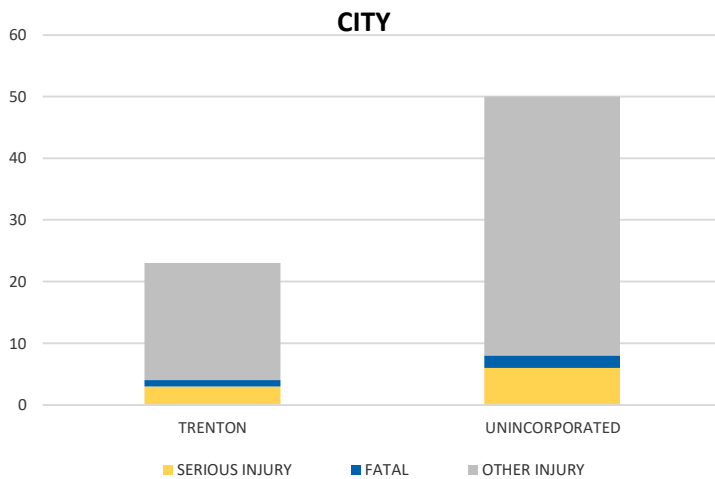


GILCHRIST COUNTY 2020 Rural Road Crash Data Summary

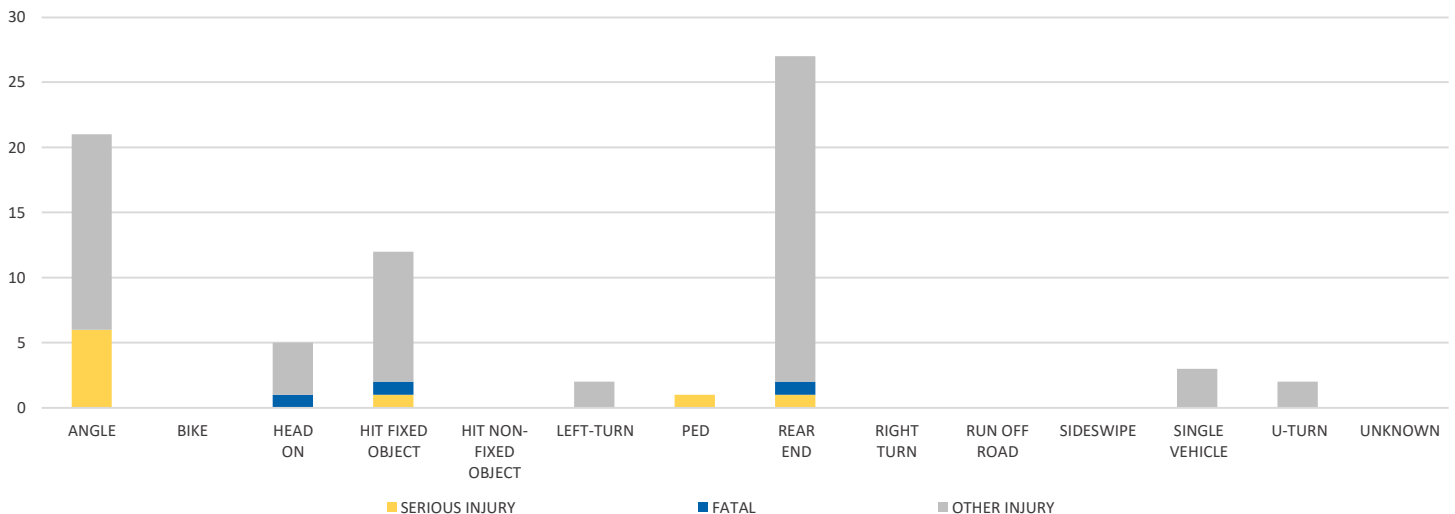
Crash numbers may vary in comparison to previous year(s) due to COVID-19 lockdowns in 2020.

Severity	Gilchrist County					District 2	
	Fatal	Incapacitating Injury	Non-Incapacitating Injury	Possible Injury	No Injury/ Property Damage Only	Total	
Crashes	3	7	14	24	56	104	2,886
People Injured	3	9	18	43	N/A	73	2,098

Note: Crash severity is determined from the highest injury type in the crash (i.e. if a crash had both a fatal and a serious it is determined to be a fatal crash).



CRASH TYPE



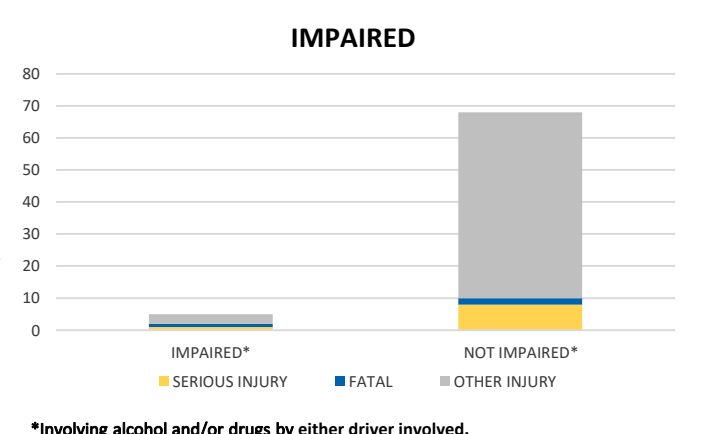
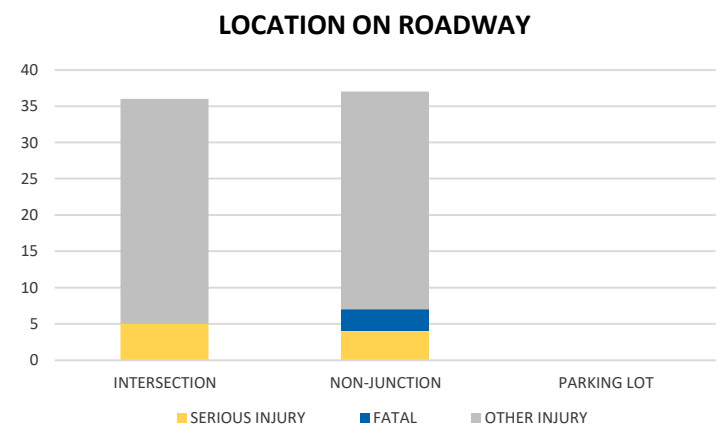
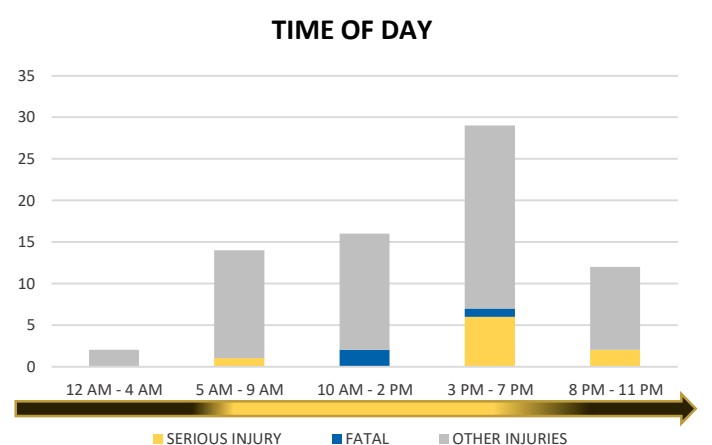
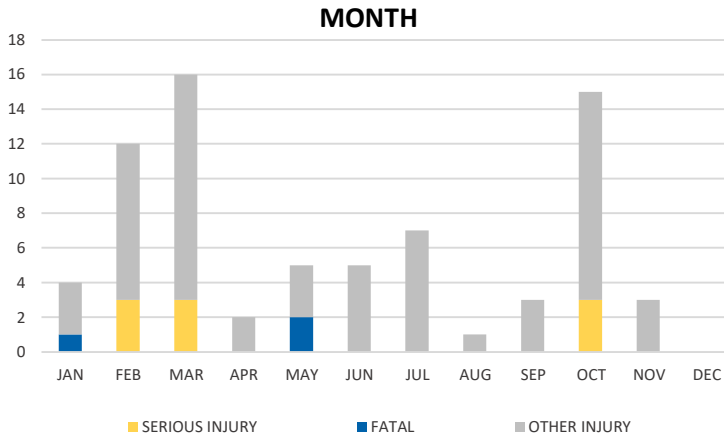
NOTE: Fatal/Serious/Other Injury in bar graphs indicates persons not crashes.
SOURCES: 2020 CARS data (unofficial at time of report)

District 2 Community Traffic Safety Program

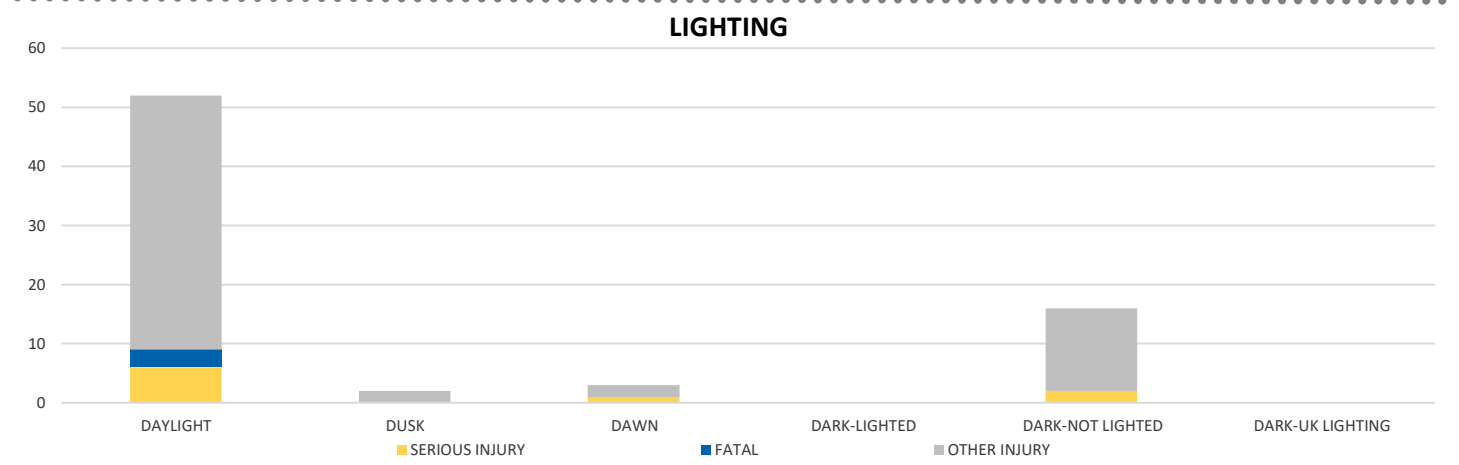
GILCHRIST COUNTY 2020 Rural Road Crash Data Summary



Crash numbers may vary in comparison to previous year(s) due to COVID-19 lockdowns in 2020.



*Involving alcohol and/or drugs by either driver involved.



NOTE: Fatal/Serious/Other Injury in bar graphs indicates persons not crashes.
SOURCES: 2020 CARS data (unofficial at time of report)