

District 2 Community Traffic Safety Program

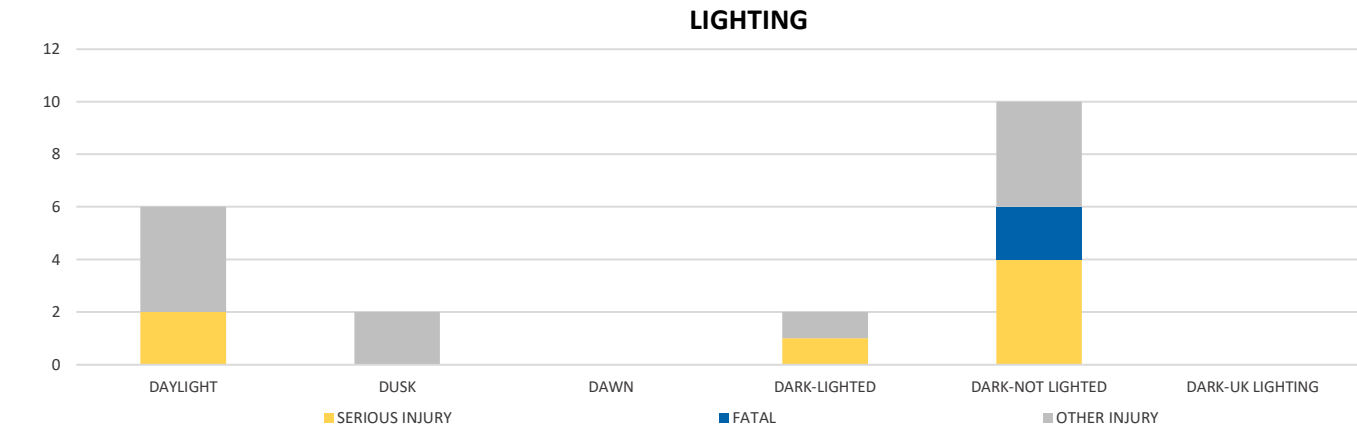
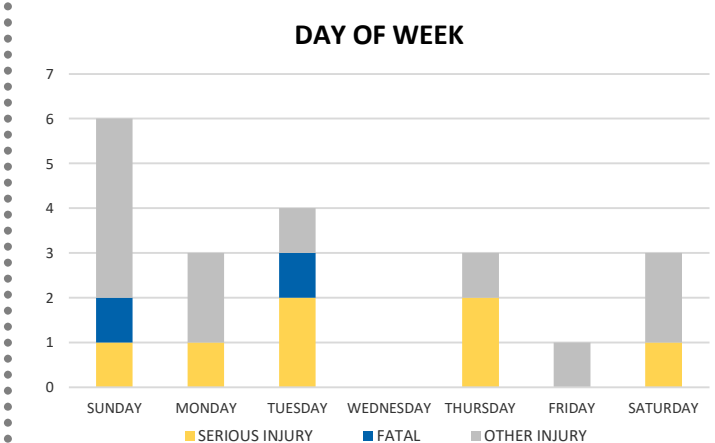
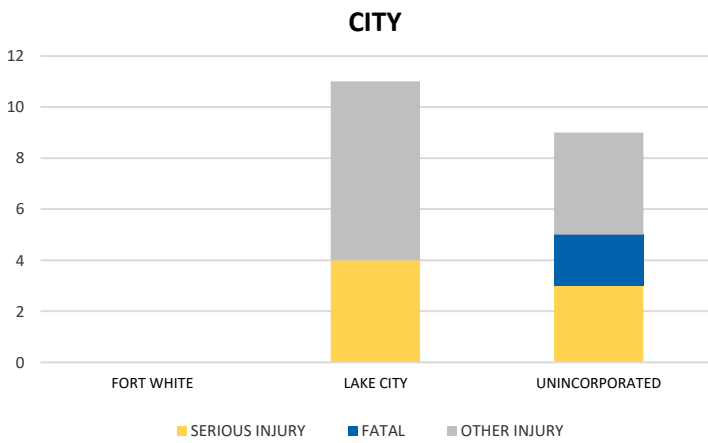
# COLUMBIA COUNTY 2020 Pedestrian Crash Data Summary



Crash numbers may vary in comparison to previous year(s) due to COVID-19 lockdowns in 2020.

Severity	Columbia County					District 2	
	Fatal	Incapacitating Injury	Non-Incapacitating Injury	Possible Injury	No Injury/ Property Damage Only	Total	Total
Crashes	2	7	8	2	3	22	728
People Injured	2	7	9	2	N/A	20	670

Note: Crash severity is determined from the highest injury type in the crash (i.e. if a crash had both a fatal and a serious it is determined to be a fatal crash).



	Daylight	NOT Daylight
All Pedestrian Crashes	40.9%	59.1%
Fatal or Incapacitating Pedestrian Crashes	9.1%	31.8%

NOTE: Fatal/Serious/Other Injury in bar graphs indicates persons not crashes.  
SOURCES: 2020 CARS data (unofficial at time of report)

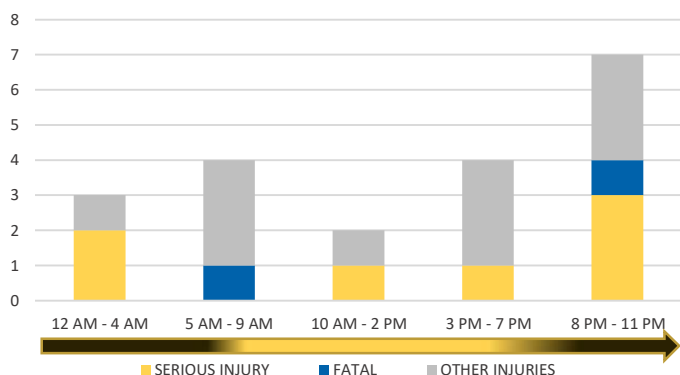
District 2 Community Traffic Safety Program

# COLUMBIA COUNTY 2020 Pedestrian Crash Data Summary

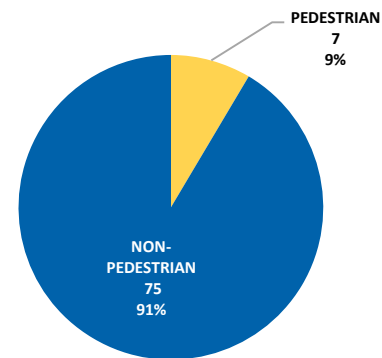


Crash numbers may vary in comparison to previous year(s) due to COVID-19 lockdowns in 2020.

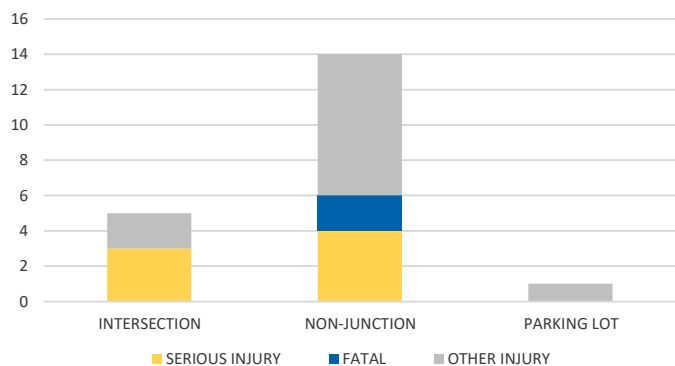
**TIME OF DAY**



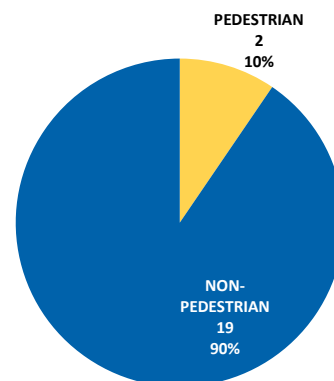
**PEDESTRIAN SERIOUS INJURY CRASHES VS TOTAL SERIOUS INJURY CRASHES**



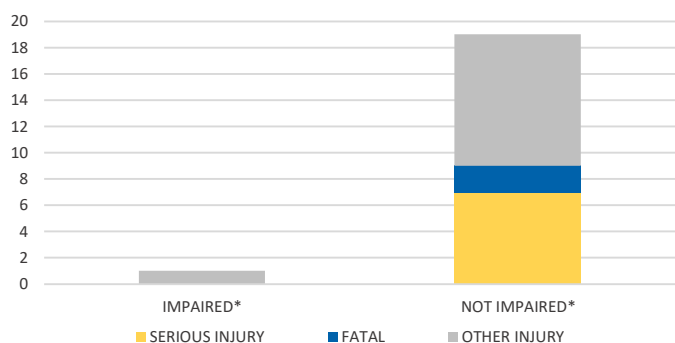
**LOCATION ON ROADWAY**



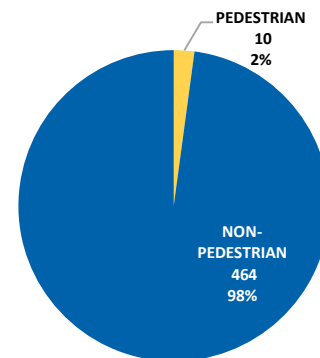
**PEDESTRIAN FATAL CRASHES VS TOTAL FATAL CRASHES**



**IMPAIRED**



**PEDESTRIAN OTHER INJURY CRASHES VS TOTAL OTHER INJURY CRASHES**



\*Involving alcohol and/or drugs by pedestrian and/or driver.

NOTE: Fatal/Serious/Other Injury in bar graphs indicates persons not crashes.  
SOURCES: 2020 CARS data (unofficial at time of report)