

District 2 Community Traffic Safety Program

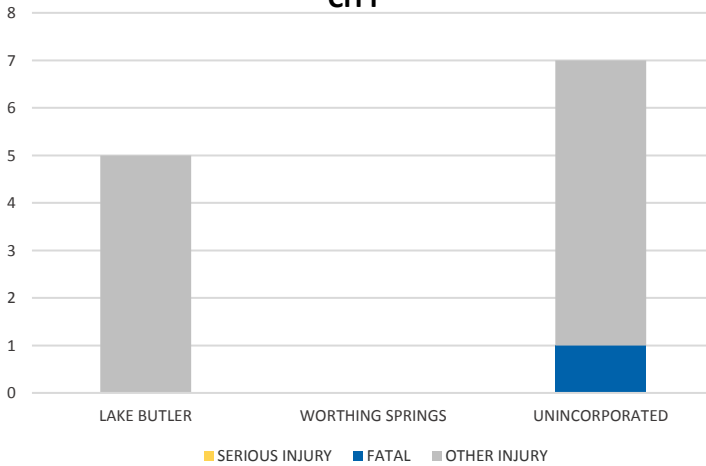


# UNION COUNTY 2019 Impaired Driving Crash Data Summary

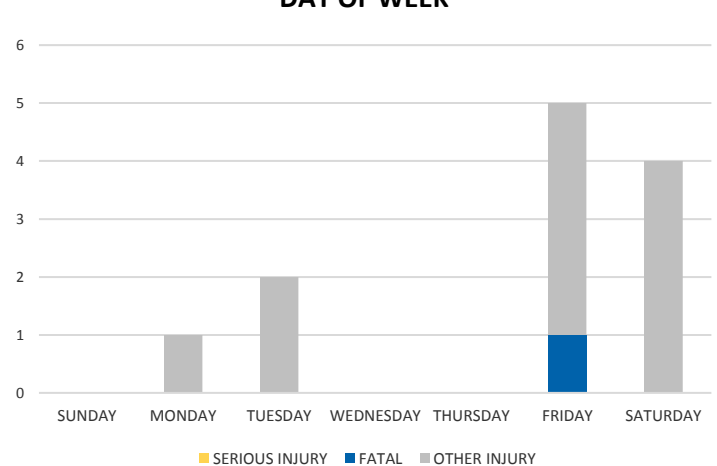
Severity	Union County					District 2	
	Fatal	Incapacitating Injury	Non-Incapacitating Injury	Possible Injury	No Injury/ Property Damage Only*	Total	
Crashes	1	0	3	4	9	17	1,962
People Injured	1	0	5	6	N/A	12	1,513

**Note:** Crash severity is determined from the highest injury type in the crash (i.e. if a crash had both a fatal and a serious it is determined to be a fatal crash).

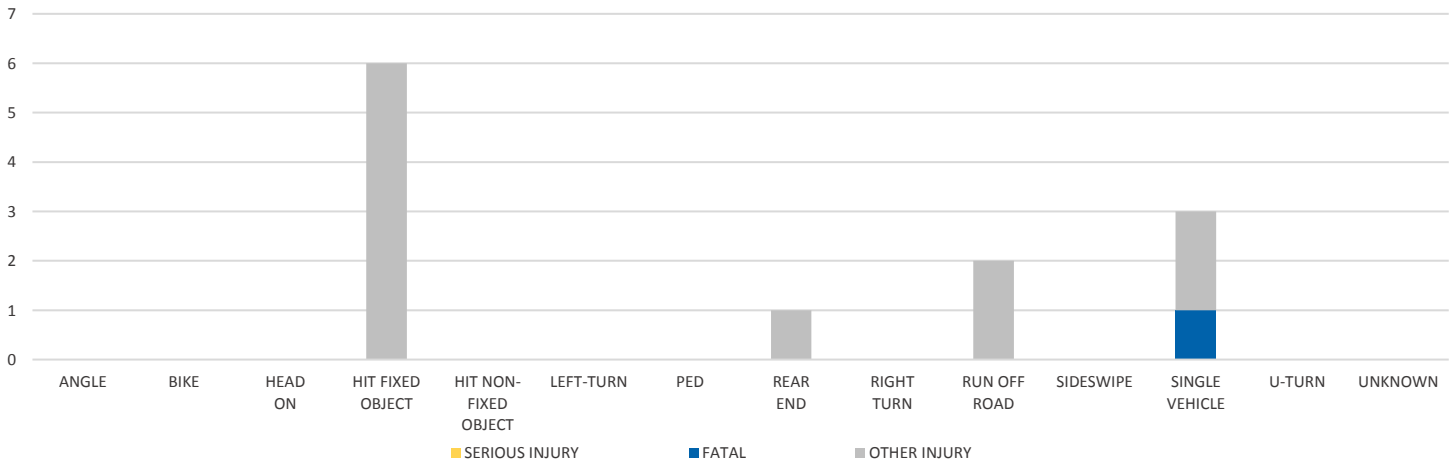
**CITY**



**DAY OF WEEK**



**CRASH TYPE**



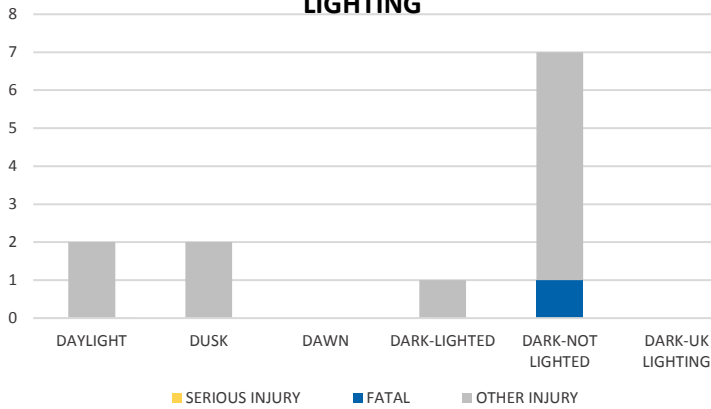
**NOTE:** Fatal/Serious/Other Injury in bar graphs indicates persons not crashes.  
**SOURCES:** 2019 CARS data (unofficial at time of report)

District 2 Community Traffic Safety Program

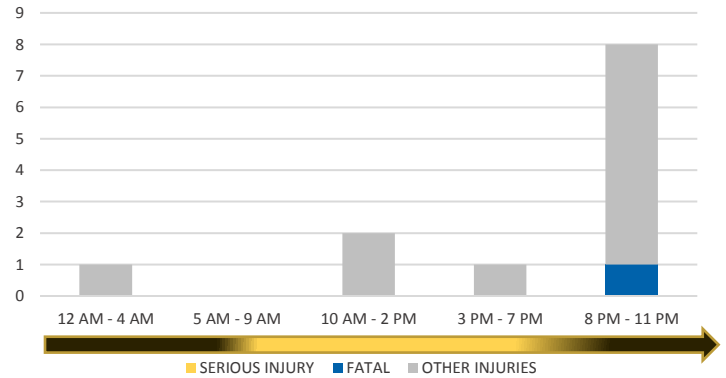


# UNION COUNTY 2019 Impaired Driving Crash Data Summary

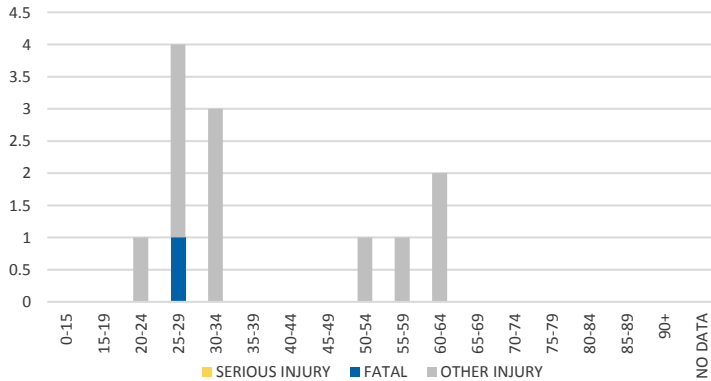
**LIGHTING**



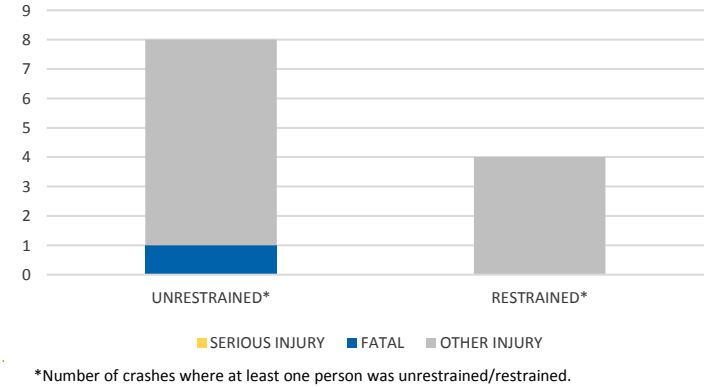
**TIME OF DAY**



**IMPAIRED DRIVER AGE**

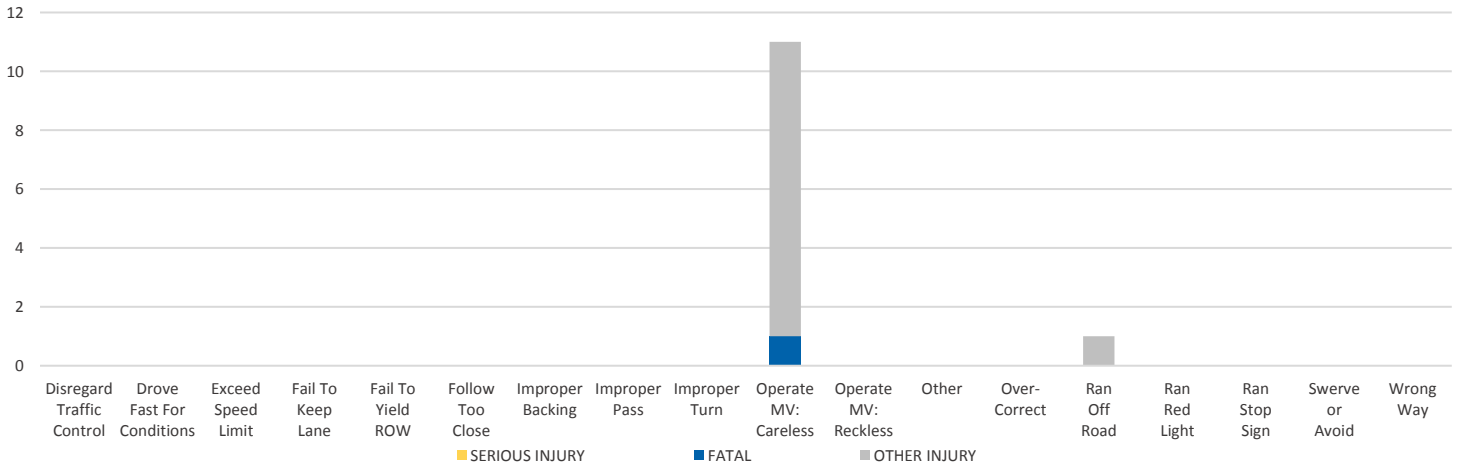


**OCCUPANT PROTECTION**



\*Number of crashes where at least one person was unrestrained/restrained.

**IMPAIRED DRIVER CAUSE OF CRASH**



NOTE: Fatal/Serious/Other Injury in bar graphs indicates persons not crashes.  
SOURCES: 2019 CARS data (unofficial at time of report)