

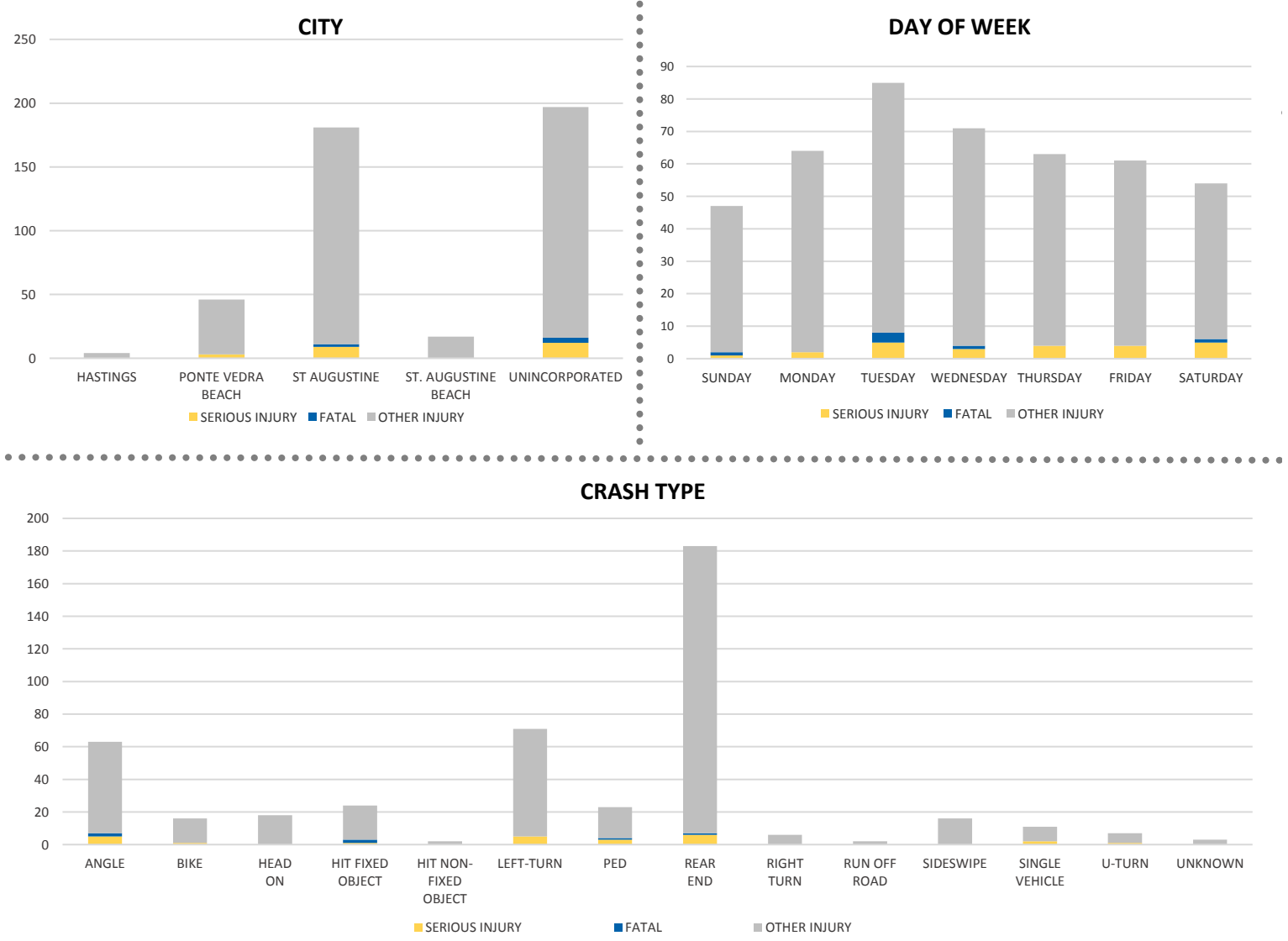
District 2 Community Traffic Safety Program



ST JOHNS COUNTY 2019 Aging Road User Crash Data Summary

Severity	St. Johns County					District 2	
	Fatal	Incapacitating Injury	Non-Incapacitating Injury	Possible Injury	No Injury/ Property Damage Only*	Total	
Crashes	6	19	122	154	374	675	9,166
People Injured	6	24	161	254	N/A	445	4,493

Note: Crash severity is determined from the highest injury type in the crash (i.e. if a crash had both a fatal and a serious it is determined to be a fatal crash).



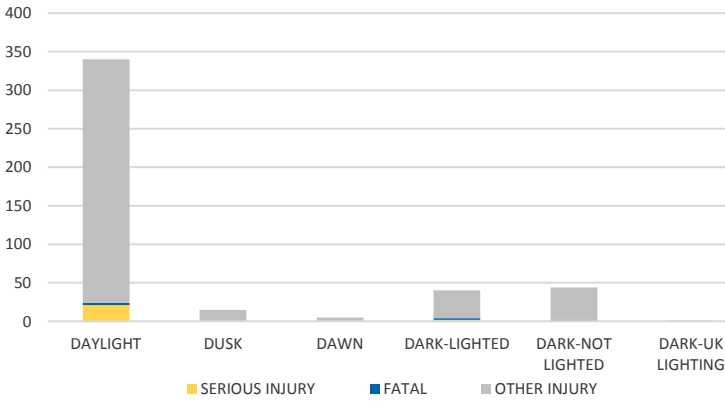
NOTE: Fatal/Serious/Other Injury in bar graphs indicates persons not crashes.
SOURCES: 2019 CARS data (unofficial at time of report)

District 2 Community Traffic Safety Program

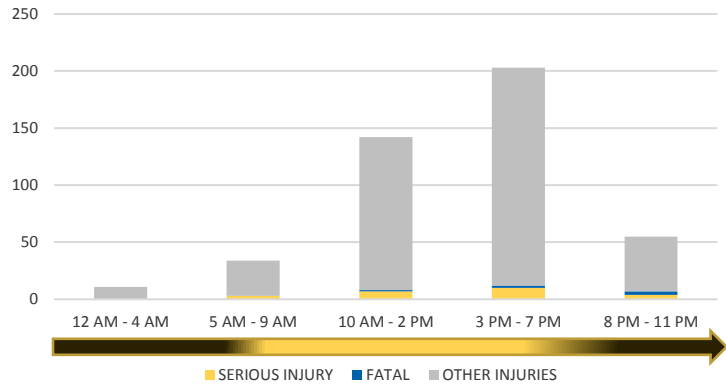


ST JOHNS COUNTY 2019 Aging Road User Crash Data Summary

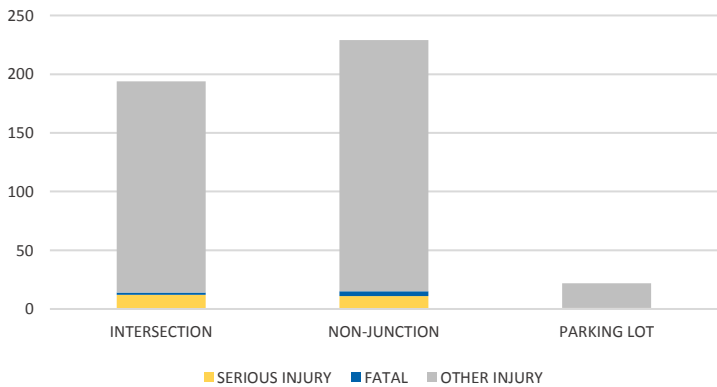
LIGHTING



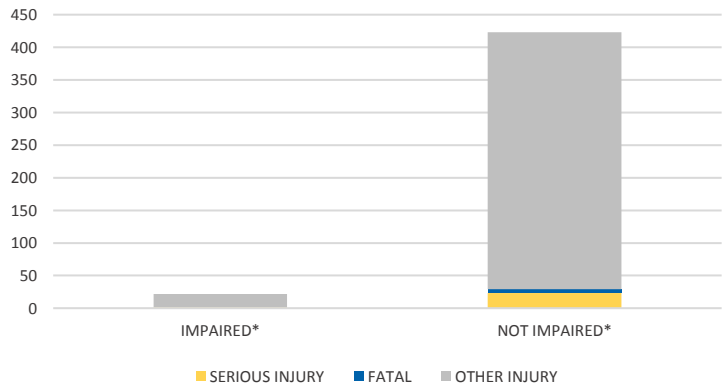
TIME OF DAY



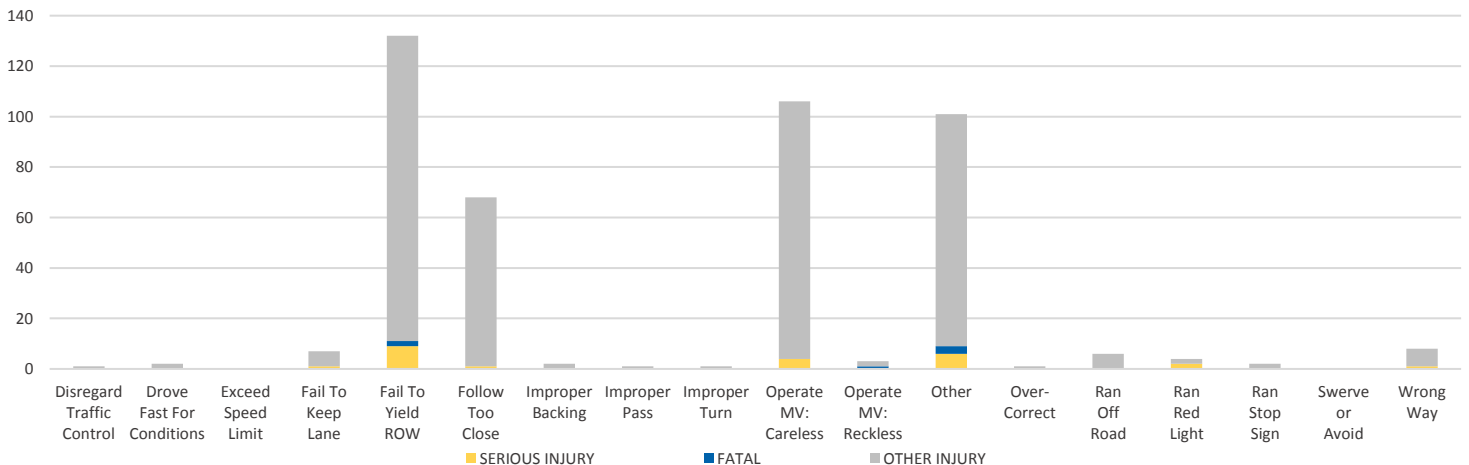
LOCATION ON ROADWAY



IMPAIRED



AGING ROAD USER CAUSE OF CRASH



NOTE: Fatal/Serious/Other Injury in bar graphs indicates persons not crashes.
SOURCES: 2019 CARS data (unofficial at time of report)