

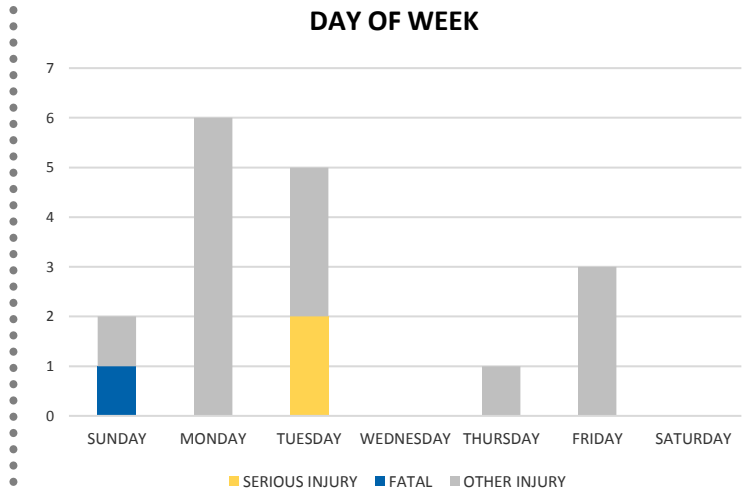
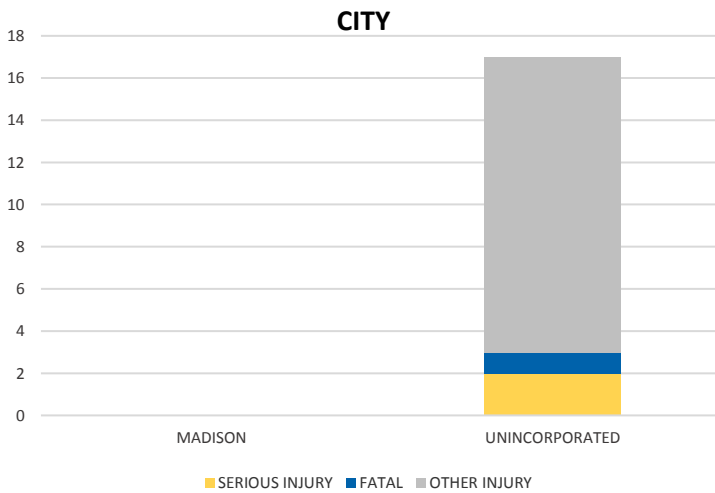
District 2 Community Traffic Safety Program



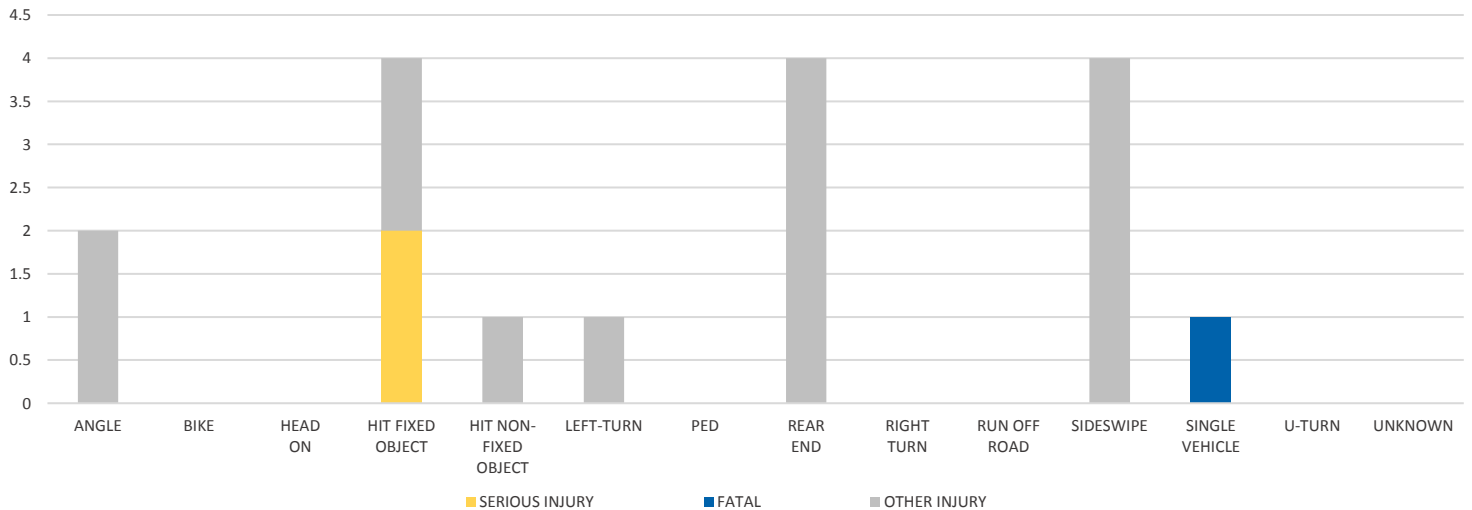
MADISON COUNTY 2019 Aging Road User Crash Data Summary

| Severity | Madison County | | | | | District 2 | |
|----------------|----------------|-----------------------|---------------------------|-----------------|----------------------------------|------------|-------|
| | Fatal | Incapacitating Injury | Non-Incapacitating Injury | Possible Injury | No Injury/ Property Damage Only* | Total | |
| Crashes | 1 | 2 | 6 | 3 | 31 | 43 | 9,166 |
| People Injured | 1 | 2 | 9 | 5 | N/A | 17 | 4,493 |

Note: Crash severity is determined from the highest injury type in the crash (i.e. if a crash had both a fatal and a serious it is determined to be a fatal crash).



CRASH TYPE



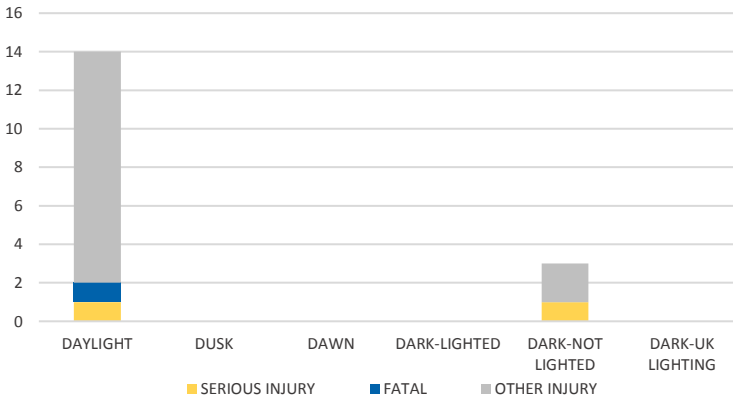
NOTE: Fatal/Serious/Other Injury in bar graphs indicates persons not crashes.
SOURCES: 2019 CARS data (unofficial at time of report)

District 2 Community Traffic Safety Program

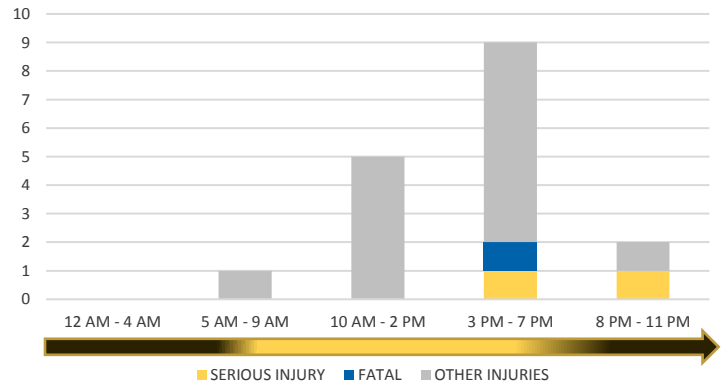


MADISON COUNTY 2019 Aging Road User Crash Data Summary

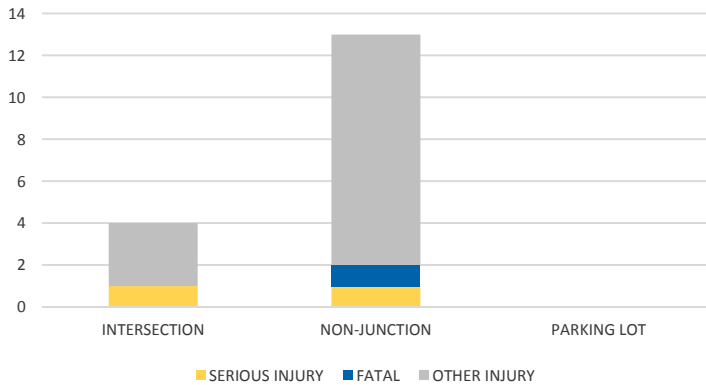
LIGHTING



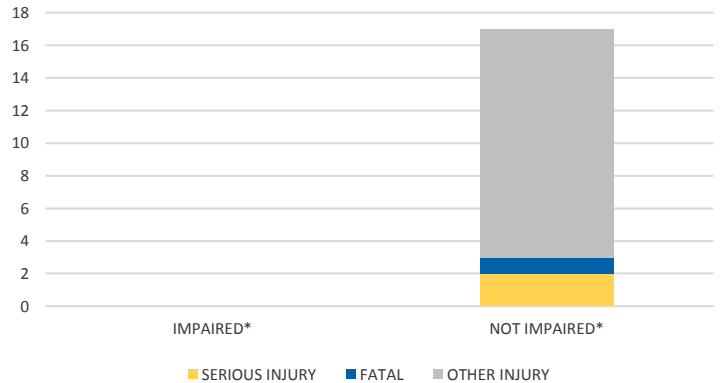
TIME OF DAY



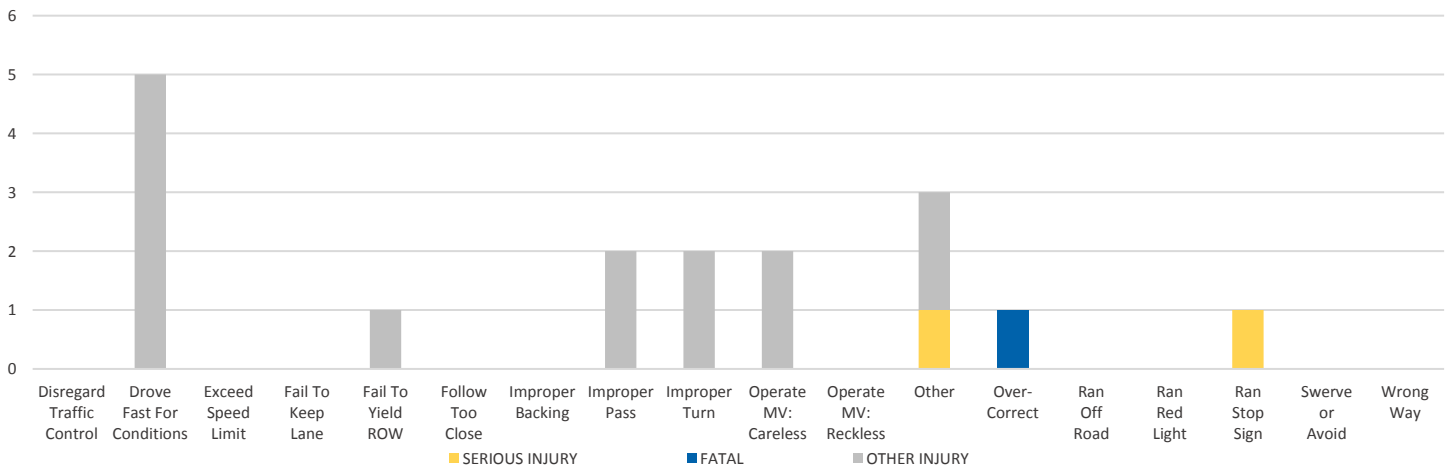
LOCATION ON ROADWAY



IMPAIRED



AGING ROAD USER CAUSE OF CRASH



NOTE: Fatal/Serious/Other Injury in bar graphs indicates persons not crashes.
SOURCES: 2019 CARS data (unofficial at time of report)