

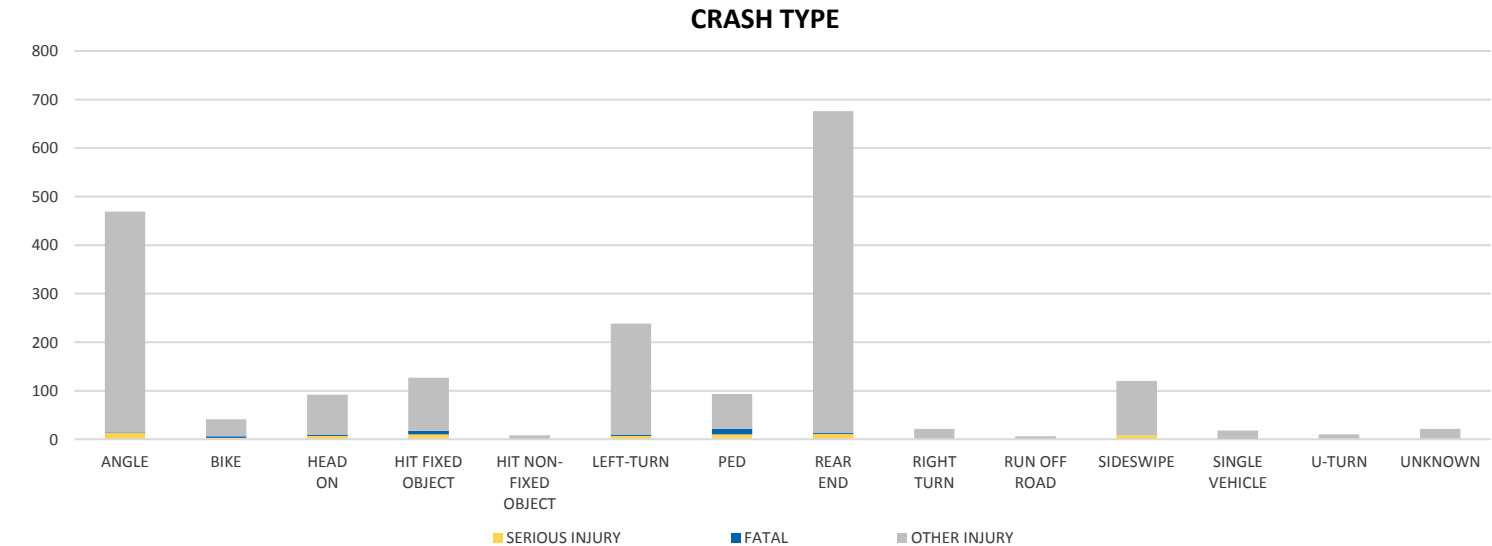
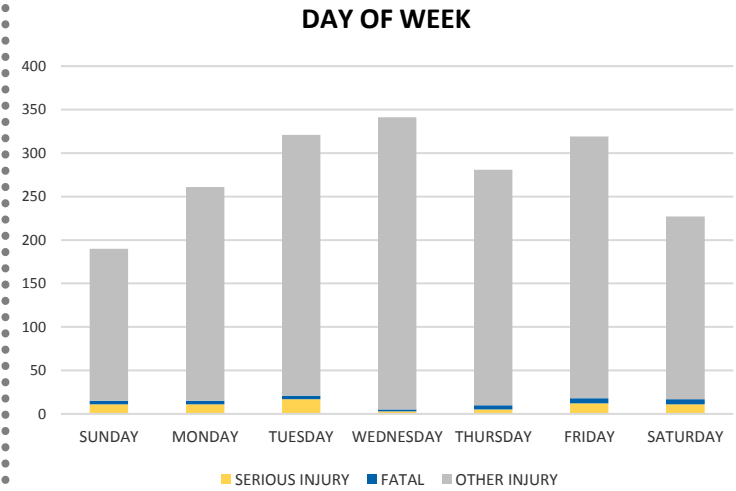
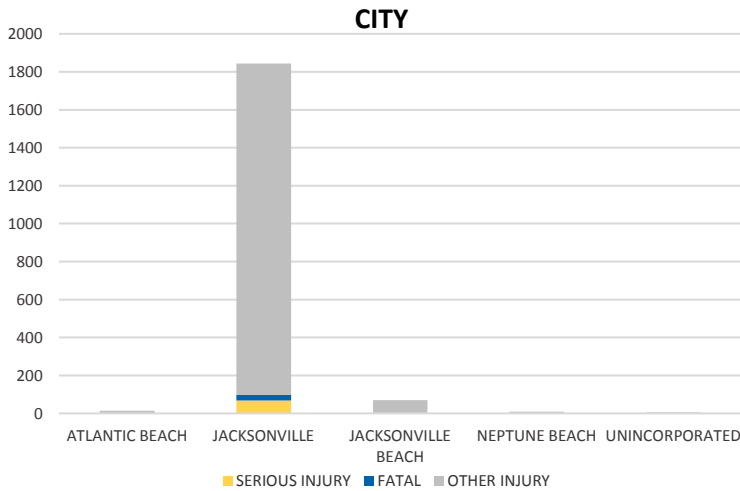
District 2 Community Traffic Safety Program



DUVAL COUNTY 2019 Aging Road User Crash Data Summary

Severity	Duval County					District 2	
	Fatal	Incapacitating Injury	Non-Incapacitating Injury	Possible Injury	No Injury/ Property Damage Only*	Total	
Crashes	30	54	394	903	3,973	5,354	9,166
People Injured	31	70	505	1,334	N/A	1,940	4,493

Note: Crash severity is determined from the highest injury type in the crash (i.e. if a crash had both a fatal and a serious it is determined to be a fatal crash).



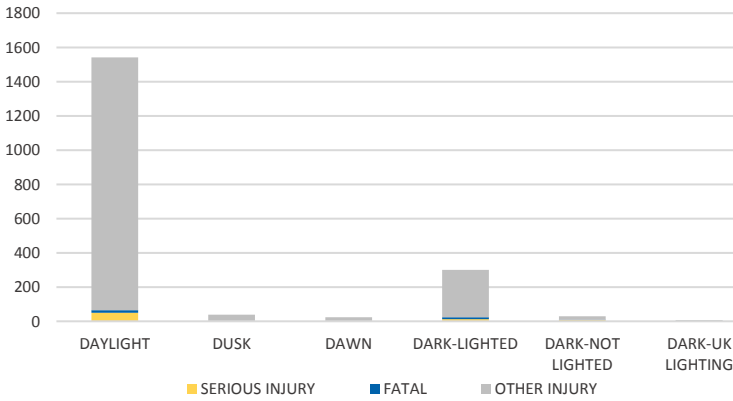
NOTE: Fatal/Serious/Other Injury in bar graphs indicates persons not crashes.
SOURCES: 2019 CARS data (unofficial at time of report)

District 2 Community Traffic Safety Program

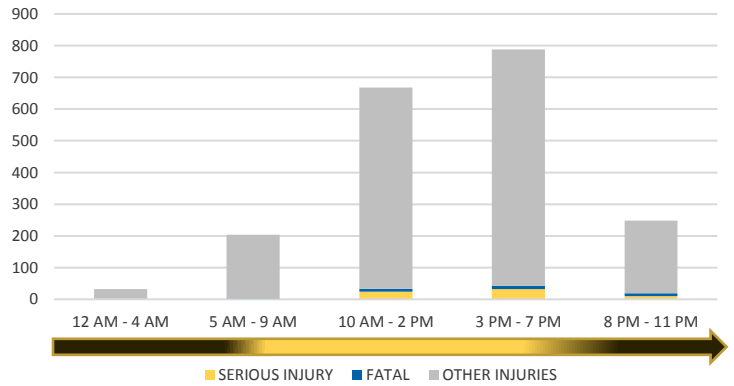


DUVAL COUNTY 2019 Aging Road User Crash Data Summary

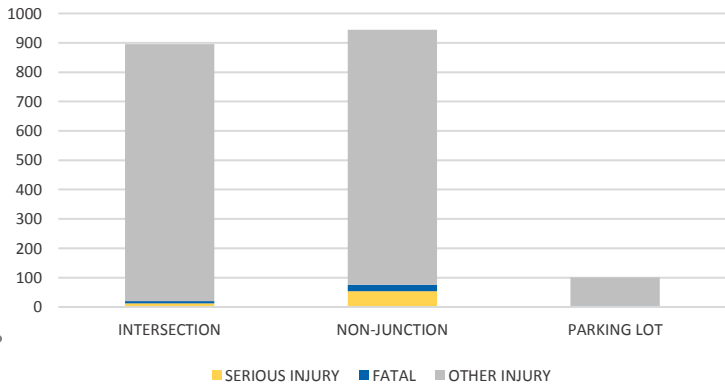
LIGHTING



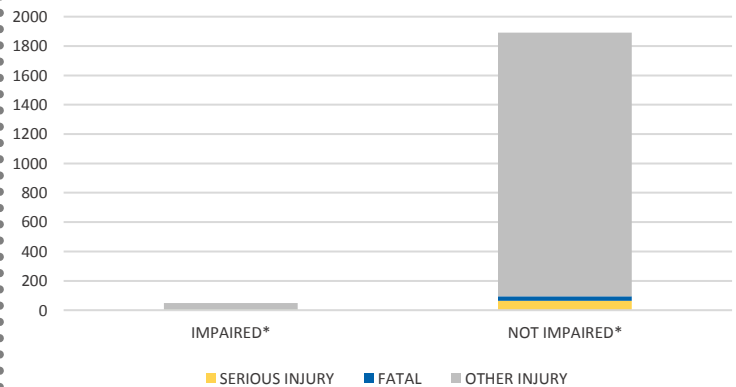
TIME OF DAY



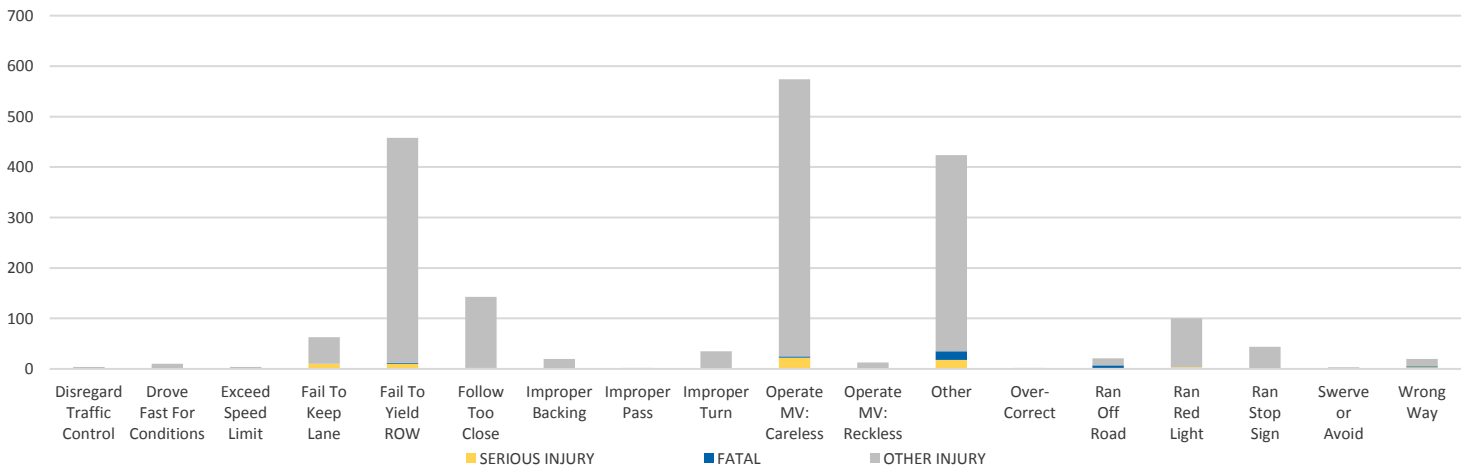
LOCATION ON ROADWAY



IMPAIRED



AGING ROAD USER CAUSE OF CRASH



NOTE: Fatal/Serious/Other Injury in bar graphs indicates persons not crashes.
 SOURCES: 2019 CARS data (unofficial at time of report)