

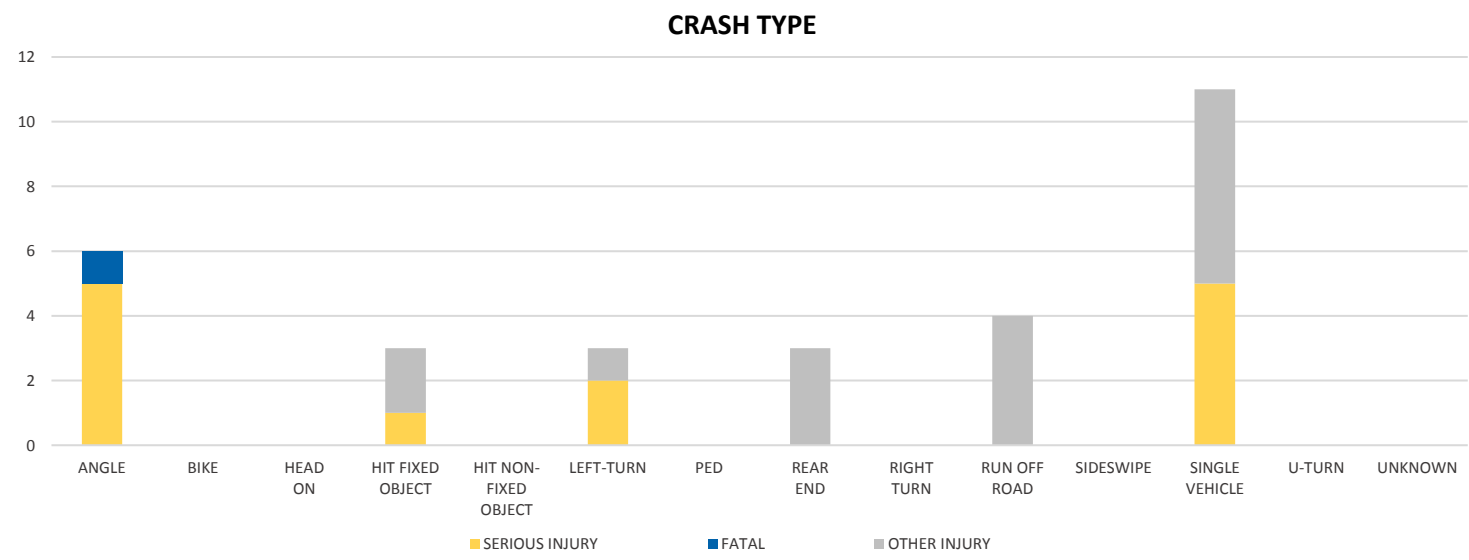
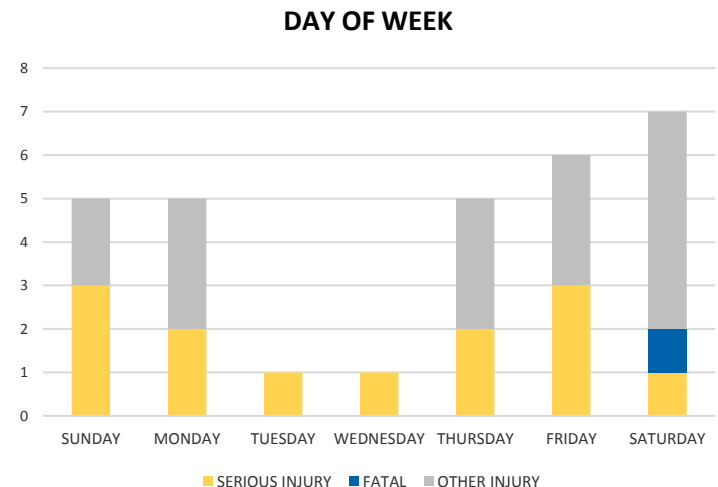
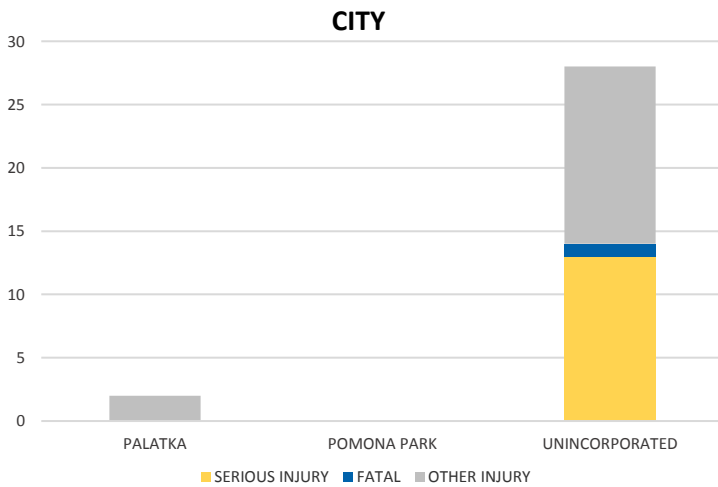
District 2 Community Traffic Safety Program



PUTNAM COUNTY 2019 Motorcycle Crash Data Summary

| Severity | Putnam County | | | | | District 2 | |
|----------------|---------------|-----------------------|---------------------------|-----------------|----------------------------------|------------|-----|
| | Fatal | Incapacitating Injury | Non-Incapacitating Injury | Possible Injury | No Injury/ Property Damage Only* | Total | |
| Crashes | 1 | 12 | 13 | 2 | 2 | 30 | 854 |
| People Injured | 1 | 13 | 14 | 2 | N/A | 30 | 857 |

Note: Crash severity is determined from the highest injury type in the crash (i.e. if a crash had both a fatal and a serious it is determined to be a fatal crash).



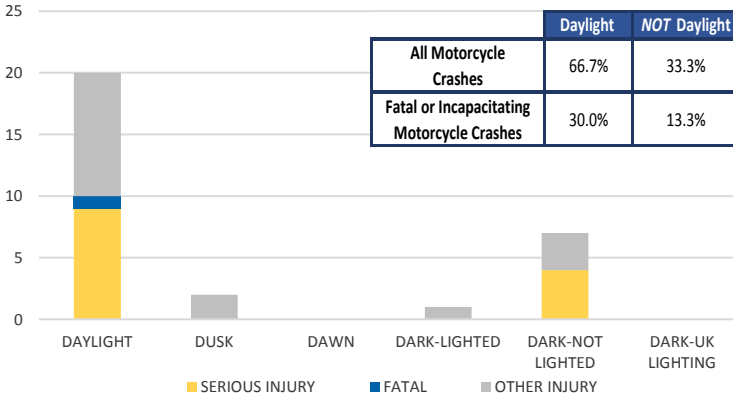
NOTE: Fatal/Serious/Other Injury in bar graphs indicates persons not crashes.
SOURCES: 2019 CARS data (unofficial at time of report)

District 2 Community Traffic Safety Program

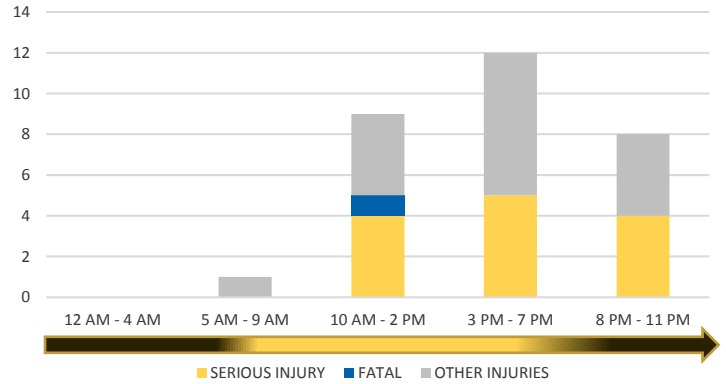


PUTNAM COUNTY 2019 Motorcycle Crash Data Summary

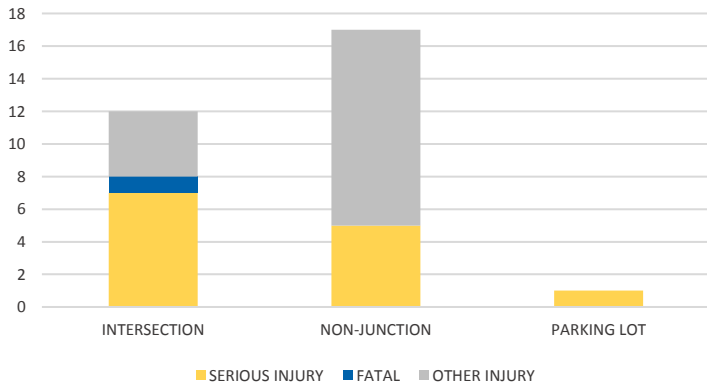
LIGHTING



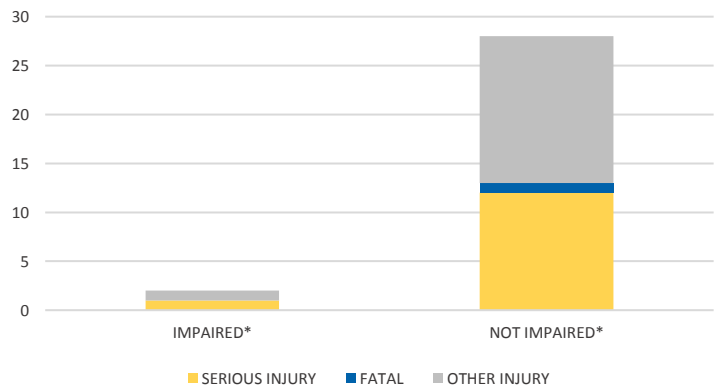
TIME OF DAY



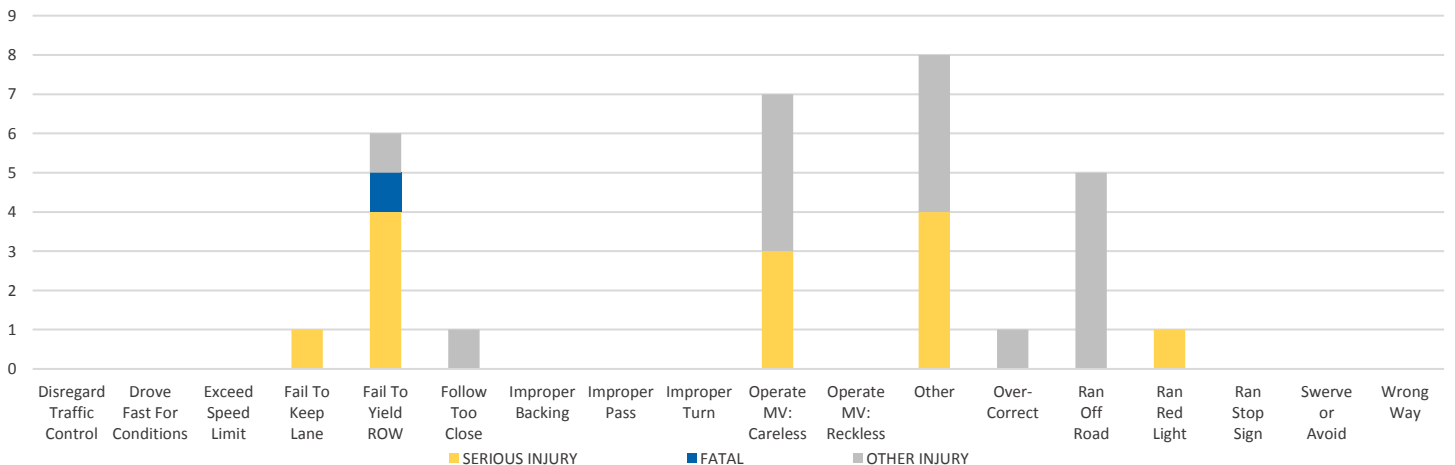
LOCATION ON ROADWAY



IMPAIRED



DRIVER CAUSE OF CRASH



NOTE: Fatal/Serious/Other Injury in bar graphs indicates persons not crashes.
 SOURCES: 2019 CARS data (unofficial at time of report)