

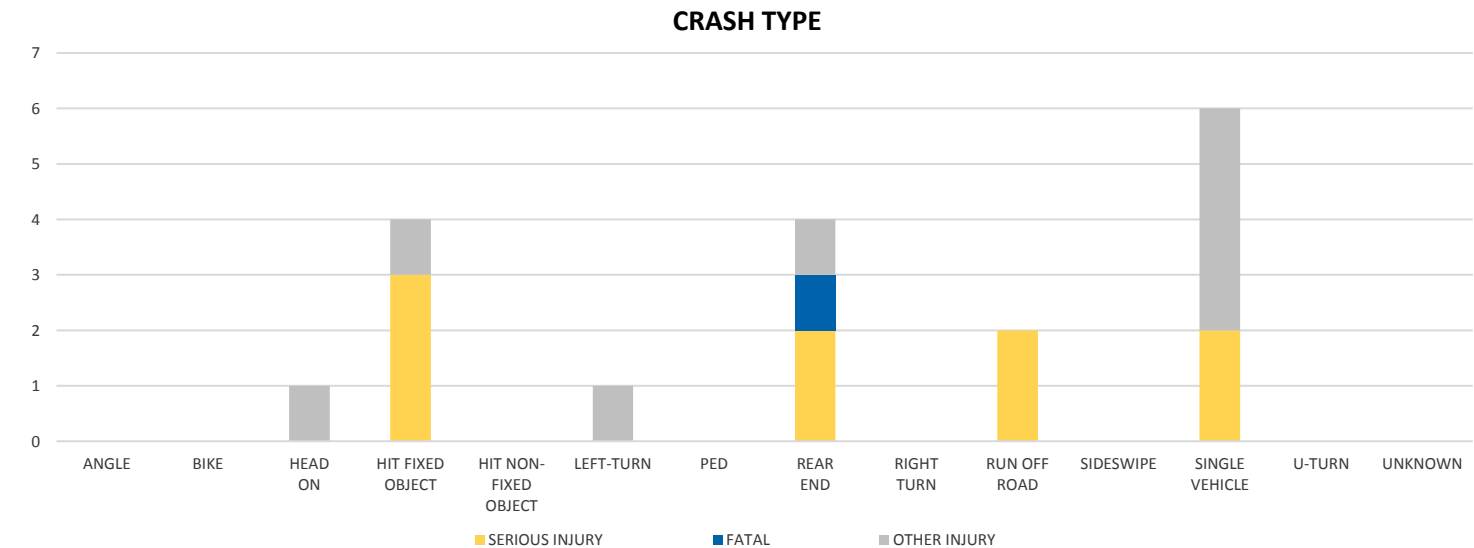
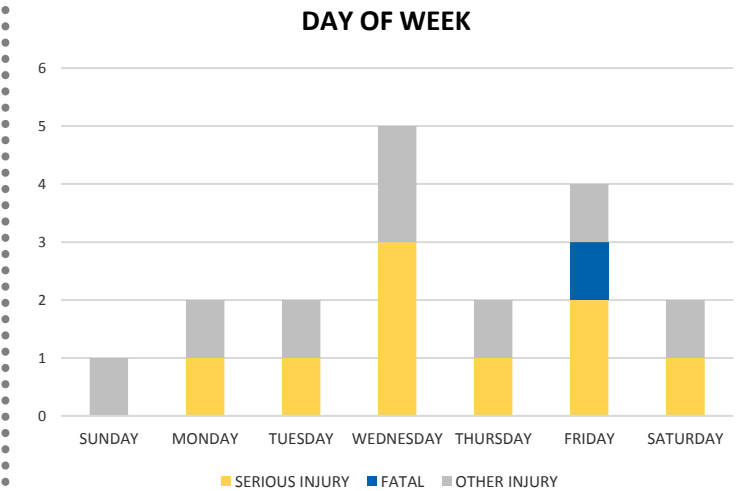
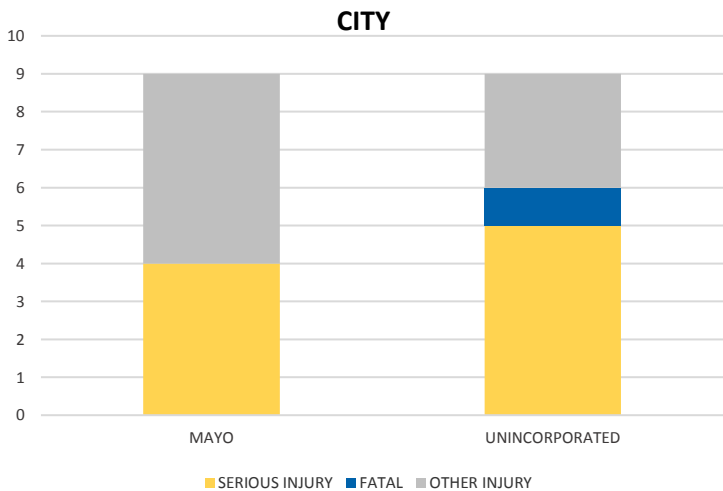
District 2 Community Traffic Safety Program



LAFAYETTE COUNTY 2019 Lane Departure Crash Data Summary

Severity	Lafayette County					District 2	
	Fatal	Incapacitating Injury	Non-Incapacitating Injury	Possible Injury	No Injury/ Property Damage Only*	Total	
Crashes	1	7	1	4	10	23	21,597
People Injured	1	9	3	5	N/A	18	7,696

Note: Crash severity is determined from the highest injury type in the crash (i.e. if a crash had both a fatal and a serious it is determined to be a fatal crash).



NOTE: Fatal/Serious/Other Injury in bar graphs indicates persons not crashes.
 SOURCES: 2019 CARS data (unofficial at time of report)

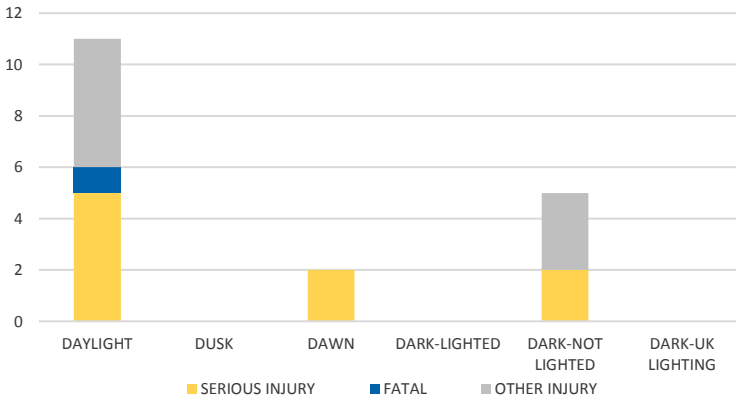
District 2 Community Traffic Safety Program



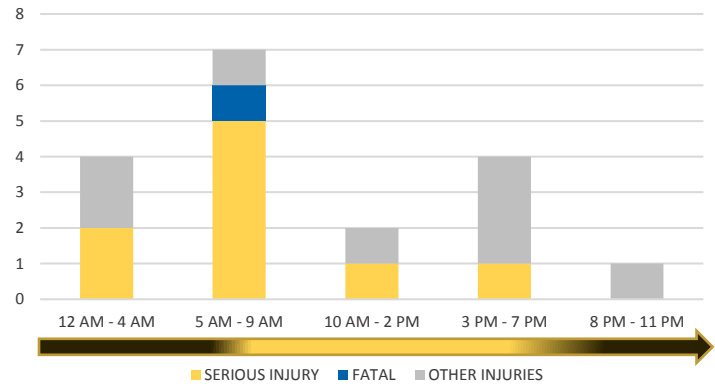
LAFAYETTE COUNTY

2019 Lane Departure Crash Data Summary

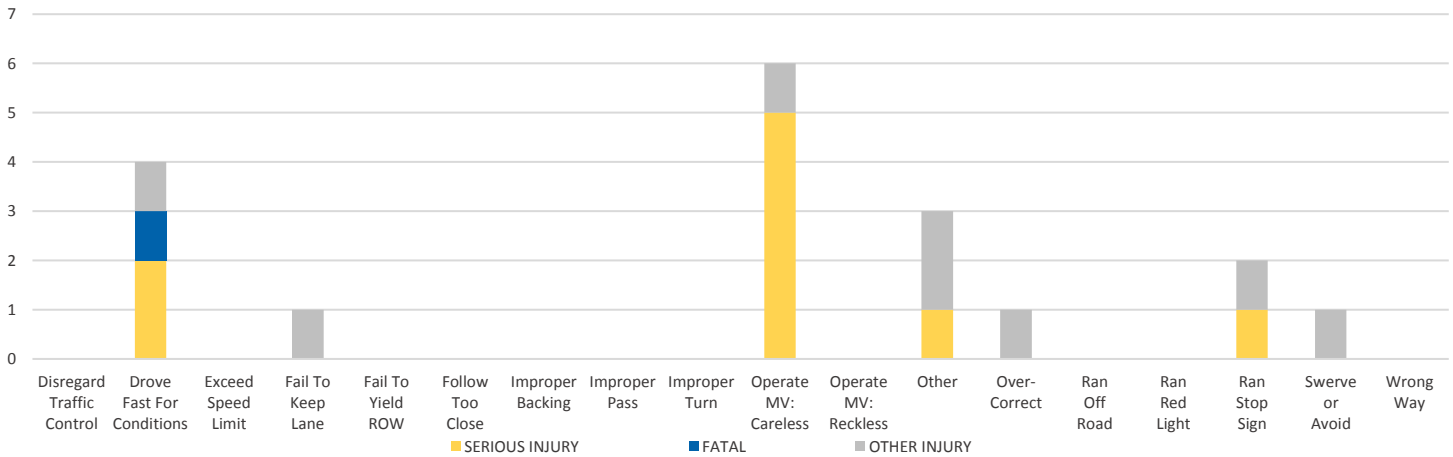
LIGHTING



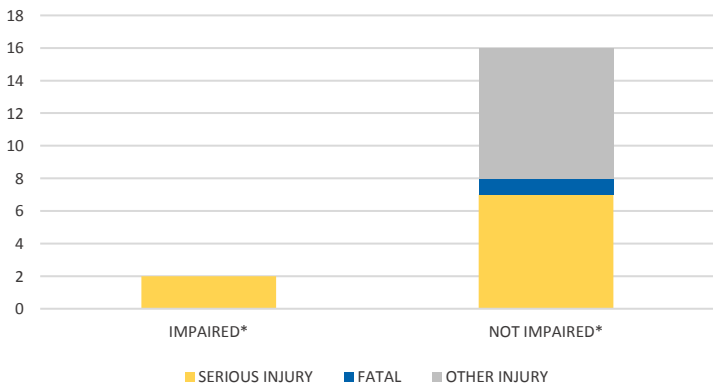
TIME OF DAY



DRIVER CAUSE OF CRASH



IMPAIRED



ROAD CLASSIFICATION	2-LANE	MULTILANE	OTHER	TOTAL
INTERSTATE/EXPRESSWAY	-	0	-	0
URBAN	0	0	0	0
SUBURBAN	1	0	0	1
RURAL	4	0	3	7
PARKING LOT	-	-	0	0
UNDOCUMENTED	-	-	15	15
ON- & OFF-RAMP	-	-	0	0
TOTAL	5	0	18	23

NOTE: Fatal/Serious/Other Injury in bar graphs indicates persons not crashes.
 SOURCES: 2019 CARS data (unofficial at time of report)