

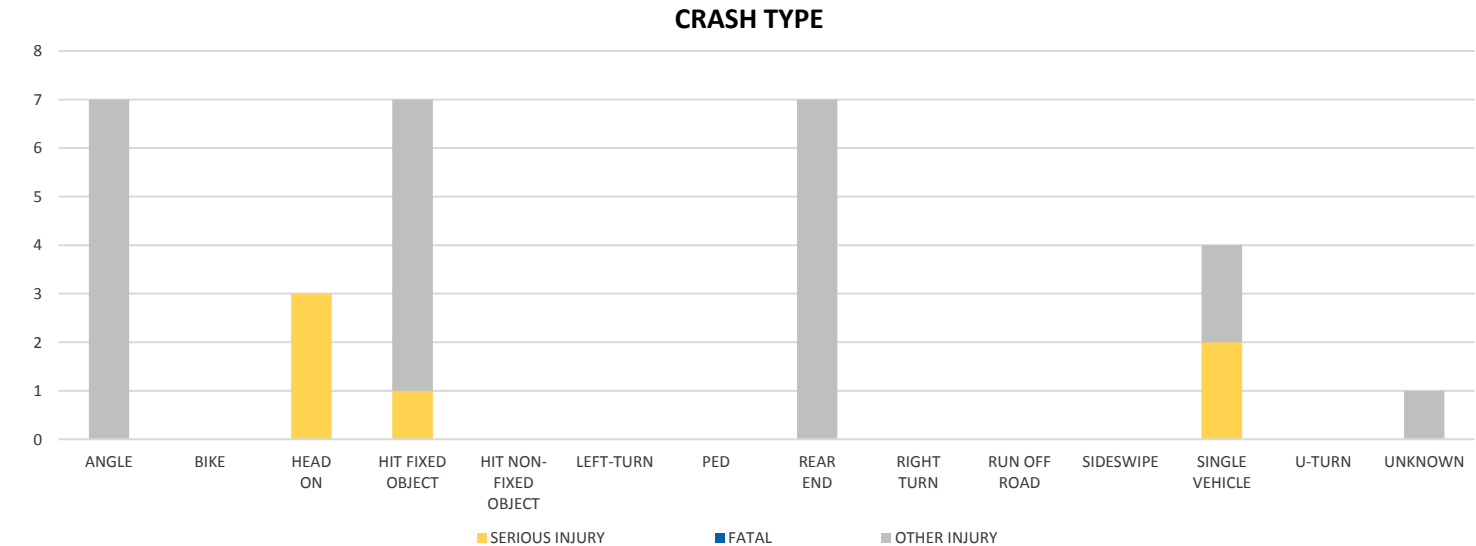
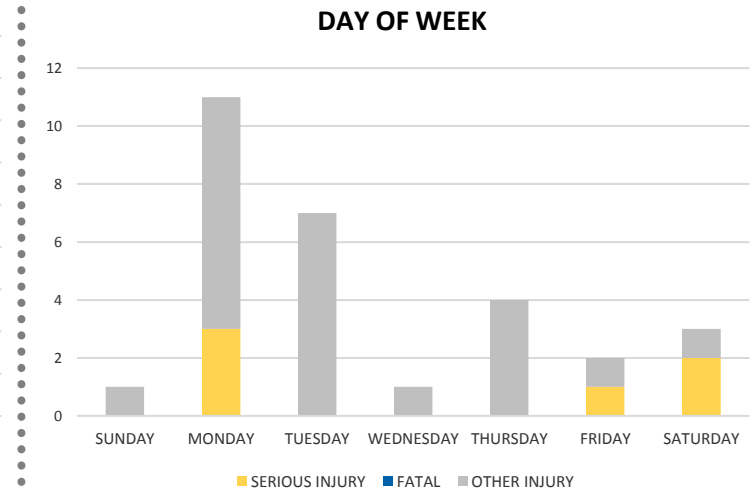
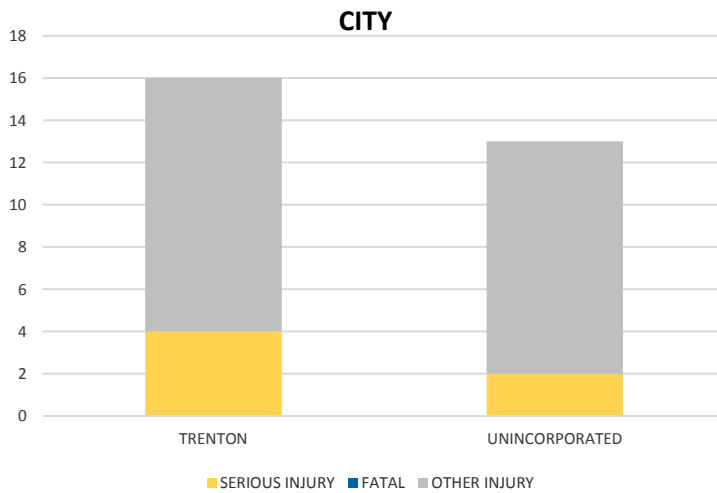
District 2 Community Traffic Safety Program



GILCHRIST COUNTY 2019 Teen Road User Crash Data Summary

Severity	Gilchrist County					District 2	
	Fatal	Incapacitating Injury	Non-Incapacitating Injury	Possible Injury	No Injury/ Property Damage Only*	Total	
Crashes	0	4	4	9	18	35	6,928
People Injured	0	6	6	17	N/A	29	3,539

Note: Crash severity is determined from the highest injury type in the crash (i.e. if a crash had both a fatal and a serious it is determined to be a fatal crash).



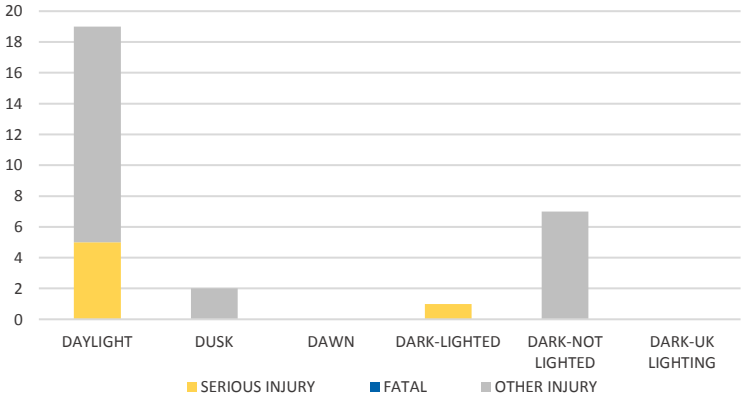
NOTE: Fatal/Serious/Other Injury in bar graphs indicates persons not crashes.
SOURCES: 2019 CARS data (unofficial at time of report)

District 2 Community Traffic Safety Program

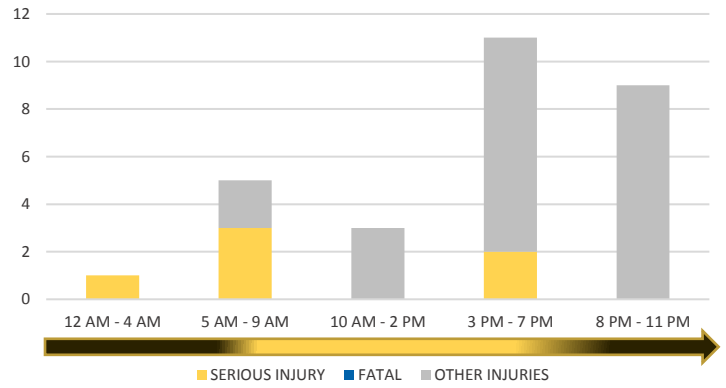


GILCHRIST COUNTY 2019 Teen Road User Crash Data Summary

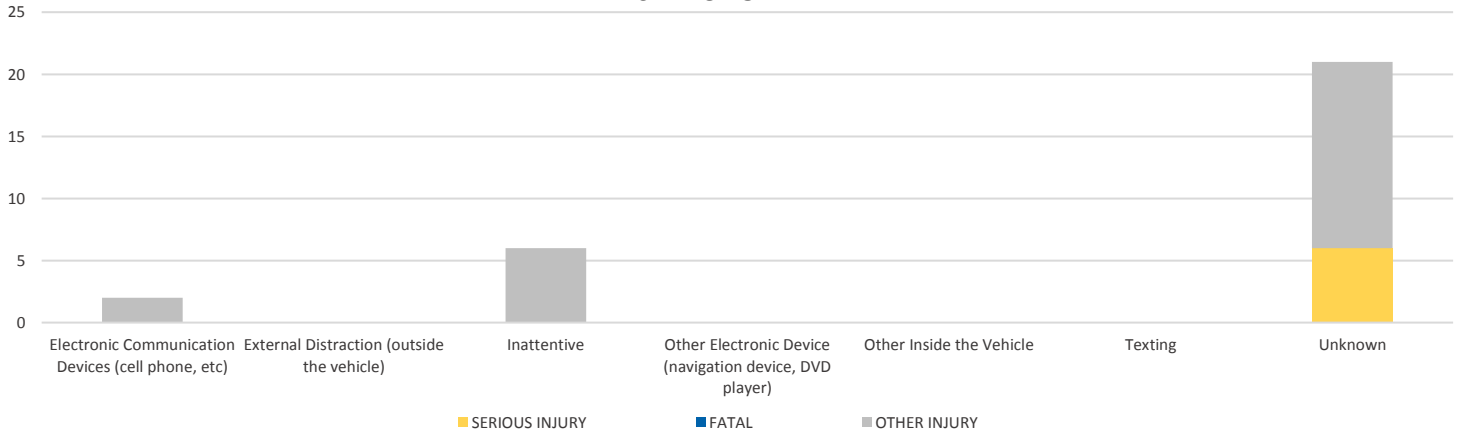
LIGHTING



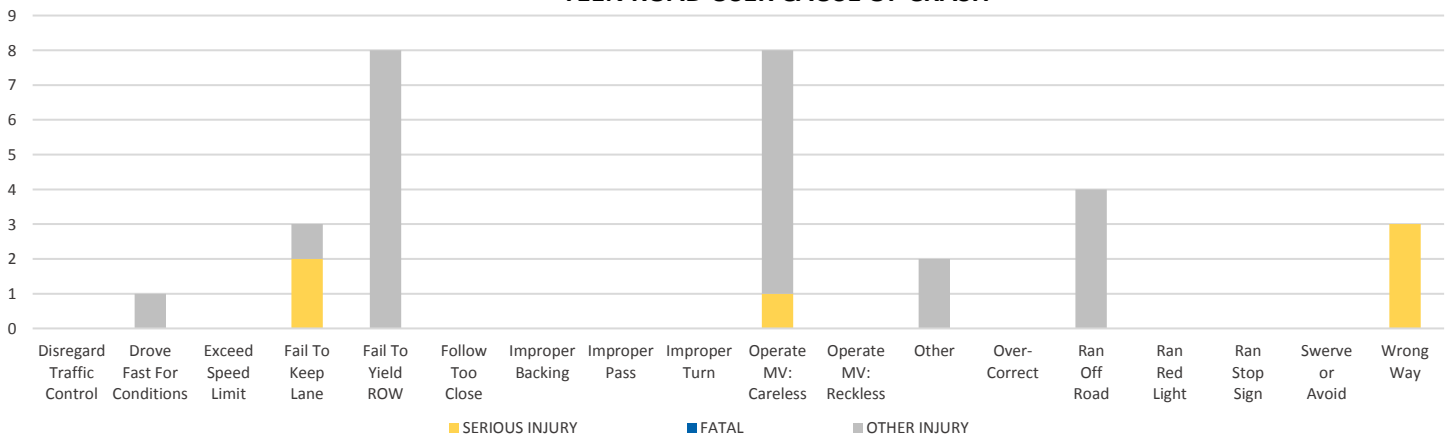
TIME OF DAY



DISTRACTION TYPE



TEEN ROAD USER CAUSE OF CRASH



NOTE: Fatal/Serious/Other Injury in bar graphs indicates persons not crashes.
 SOURCES: 2019 CARS data (unofficial at time of report)