

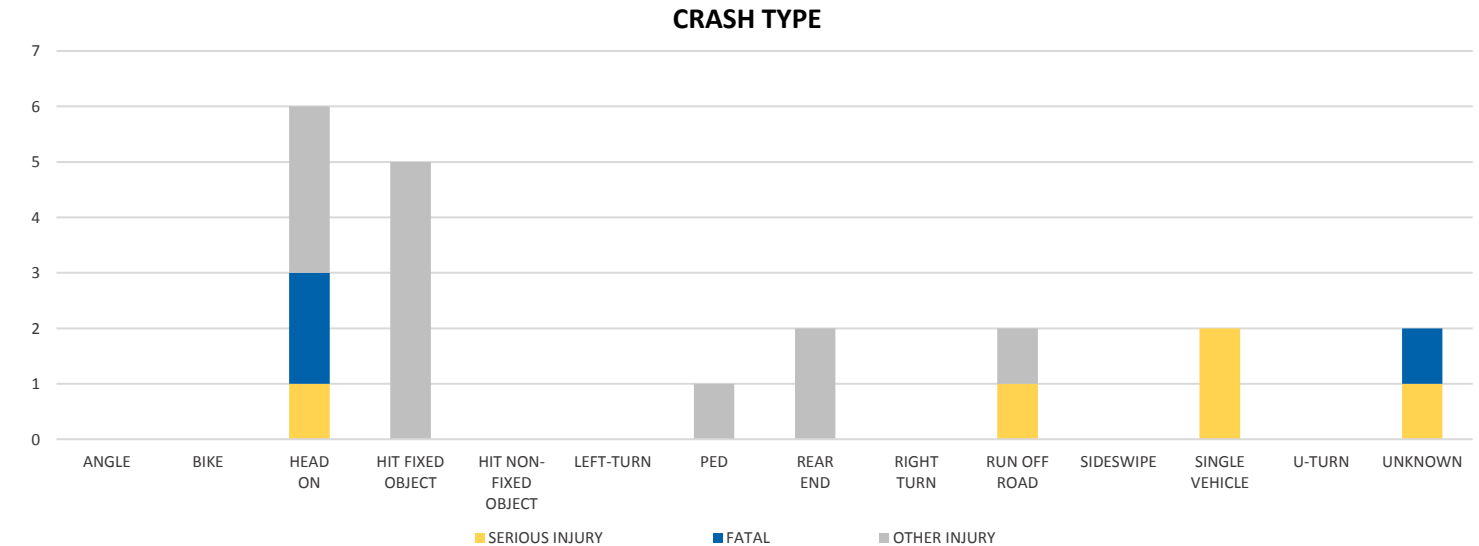
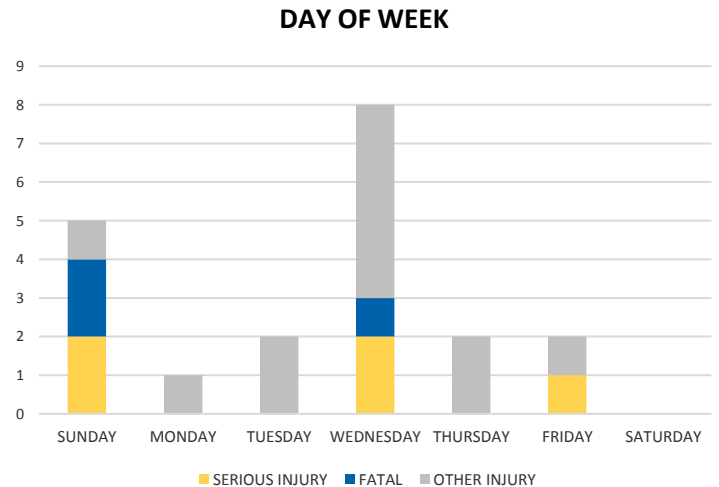
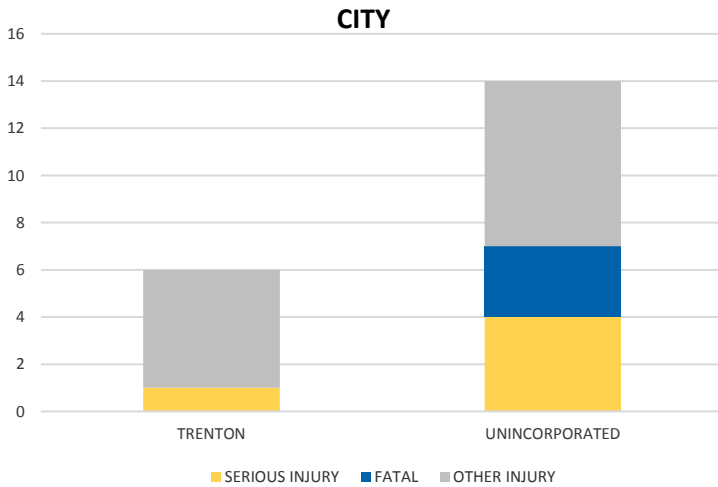
District 2 Community Traffic Safety Program



GILCHRIST COUNTY 2019 Occupant Protection (No Restraint) Crash Data Summary

Severity	Gilchrist County					District 2	
	Fatal	Incapacitating Injury	Non-Incapacitating Injury	Possible Injury	No Injury/ Property Damage Only*	Total	
Crashes	3	2	7	1	10	23	1,776
People Injured	3	5	9	3	N/A	20	1,312

Note: Crash severity is determined from the highest injury type in the crash (i.e. if a crash had both a fatal and a serious it is determined to be a fatal crash).



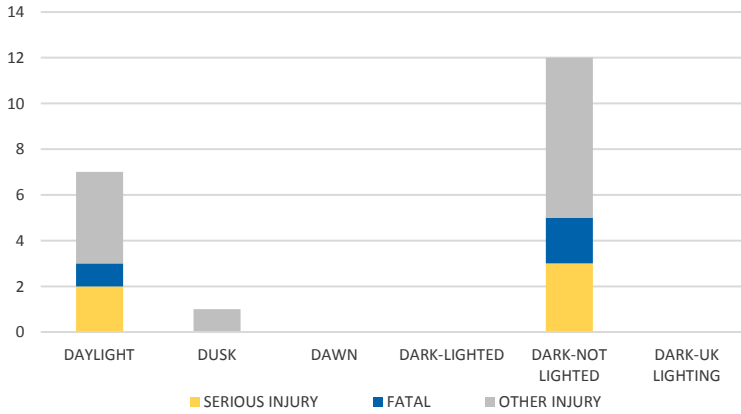
NOTE: Fatal/Serious/Other Injury in bar graphs indicates persons not crashes.
SOURCES: 2019 CARS data (unofficial at time of report)

District 2 Community Traffic Safety Program

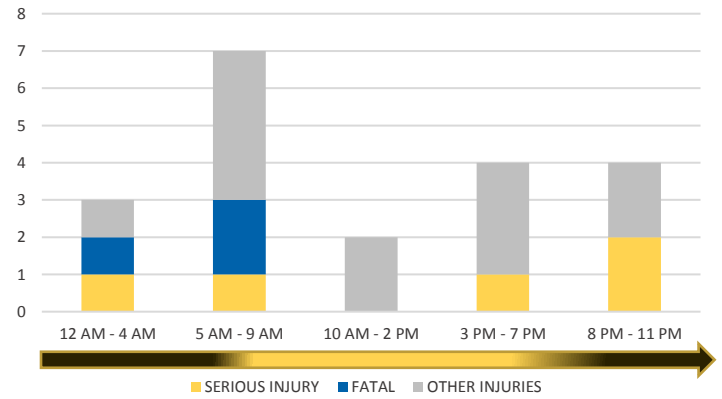


GILCHRIST COUNTY 2019 Occupant Protection (No Restraint) Crash Data Summary

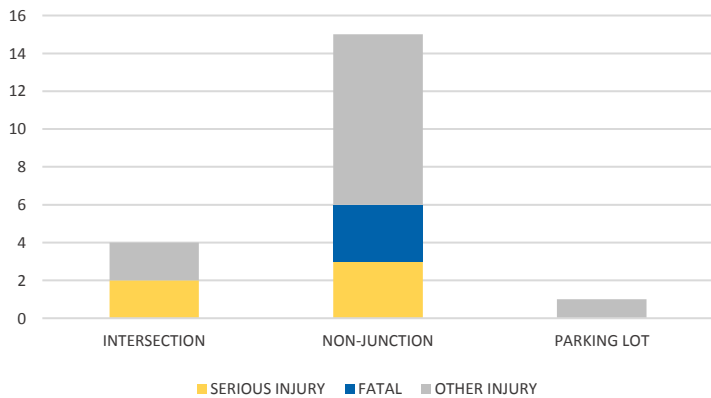
LIGHTING



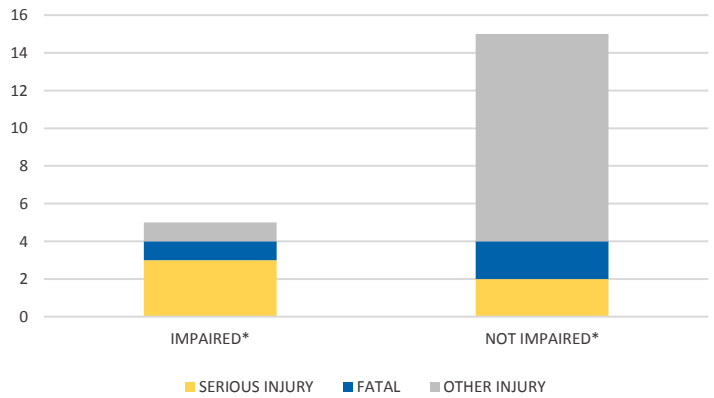
TIME OF DAY



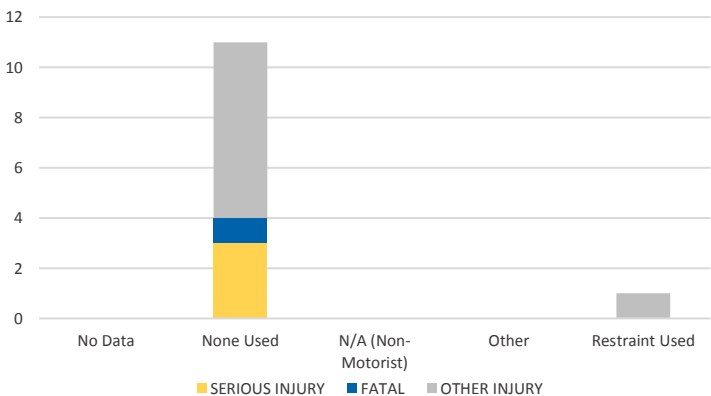
LOCATION ON ROADWAY



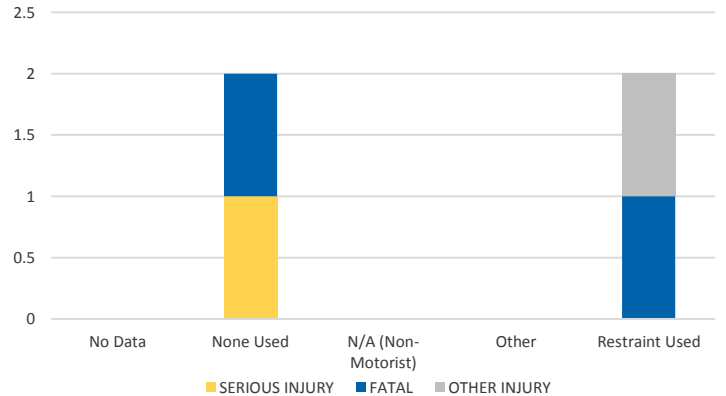
IMPAIRED



DRIVER 1 - RESTRAINT TYPE



DRIVER 2 - RESTRAINT TYPE



NOTE: Fatal/Serious/Other Injury in bar graphs indicates persons not crashes.
SOURCES: 2019 CARS data (unofficial at time of report)