

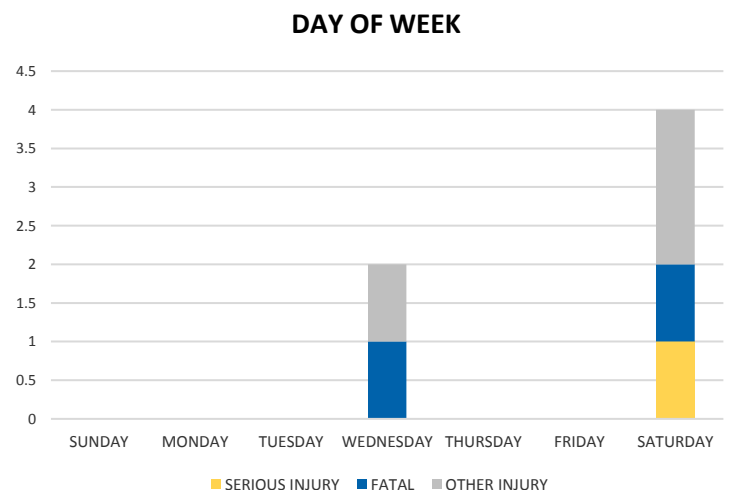
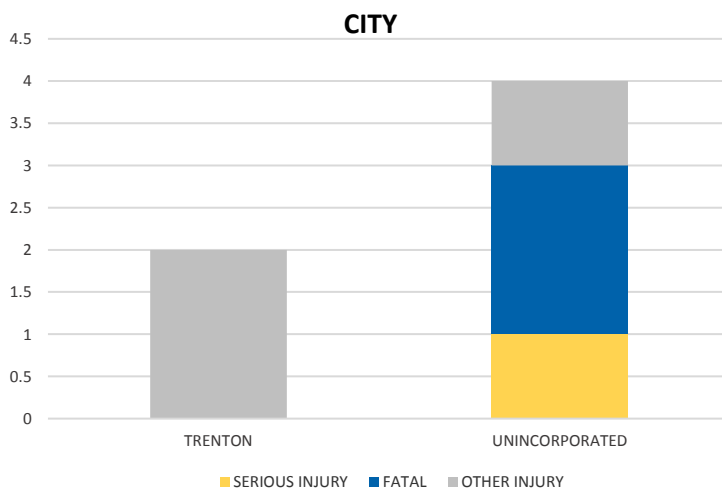
District 2 Community Traffic Safety Program



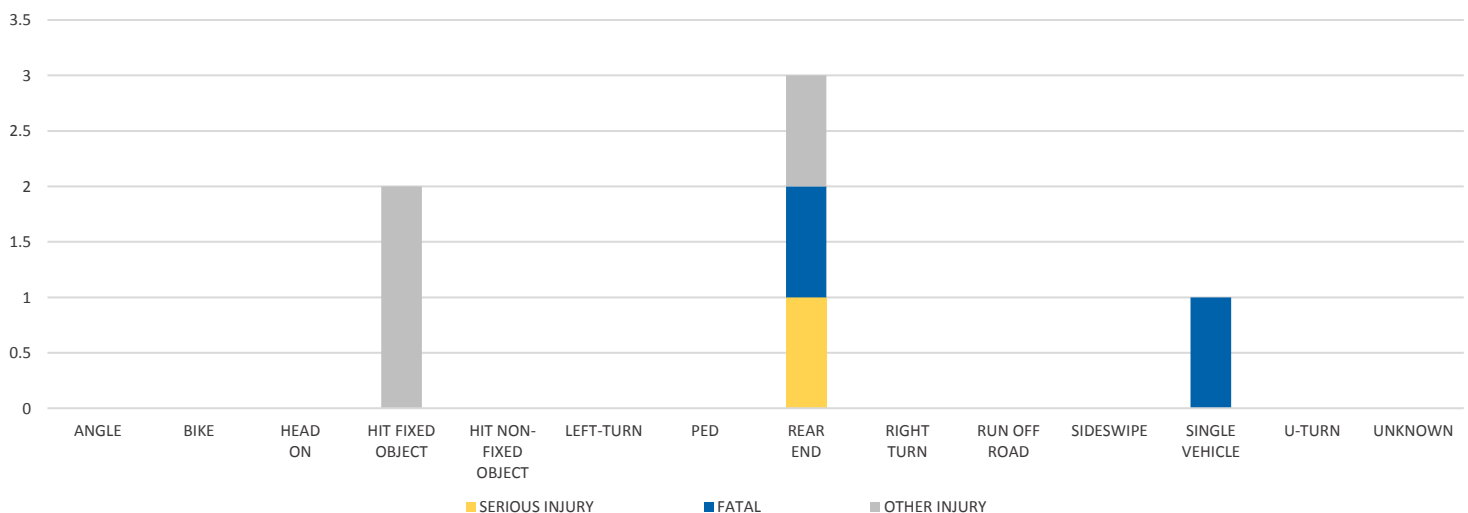
GILCHRIST COUNTY 2019 Motorcycle Crash Data Summary

| Severity | Gilchrist County | | | | | District 2 | |
|----------------|------------------|-----------------------|---------------------------|-----------------|----------------------------------|------------|-----|
| | Fatal | Incapacitating Injury | Non-Incapacitating Injury | Possible Injury | No Injury/ Property Damage Only* | Total | |
| Crashes | 2 | 1 | 1 | 2 | 1 | 7 | 854 |
| People Injured | 2 | 1 | 1 | 2 | N/A | 6 | 857 |

Note: Crash severity is determined from the highest injury type in the crash (i.e. if a crash had both a fatal and a serious it is determined to be a fatal crash).



CRASH TYPE



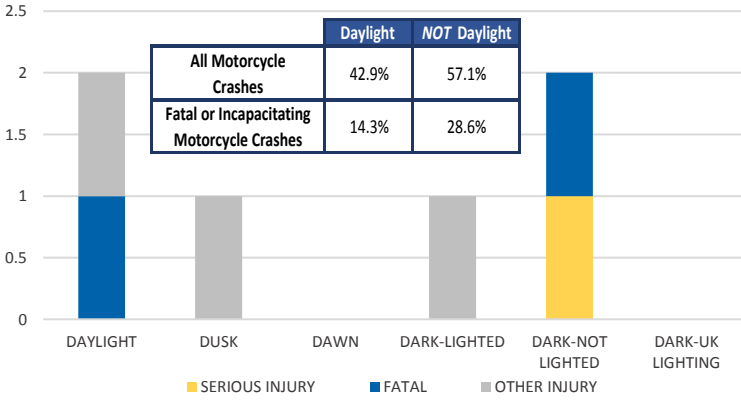
NOTE: Fatal/Serious/Other Injury in bar graphs indicates persons not crashes.
SOURCES: 2019 CARS data (unofficial at time of report)

District 2 Community Traffic Safety Program

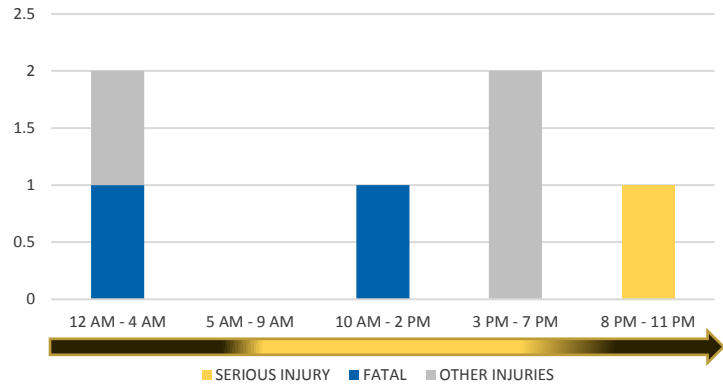


GILCHRIST COUNTY 2019 Motorcycle Crash Data Summary

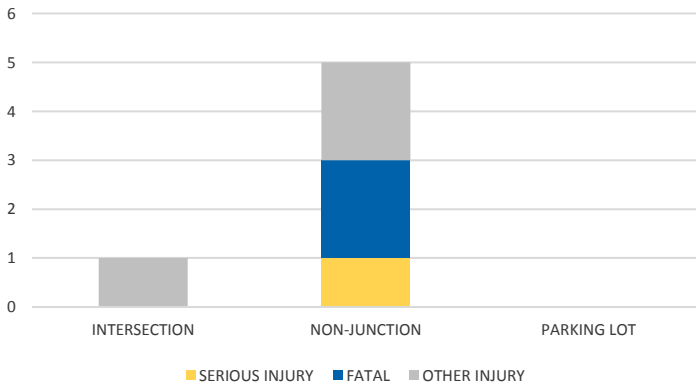
LIGHTING



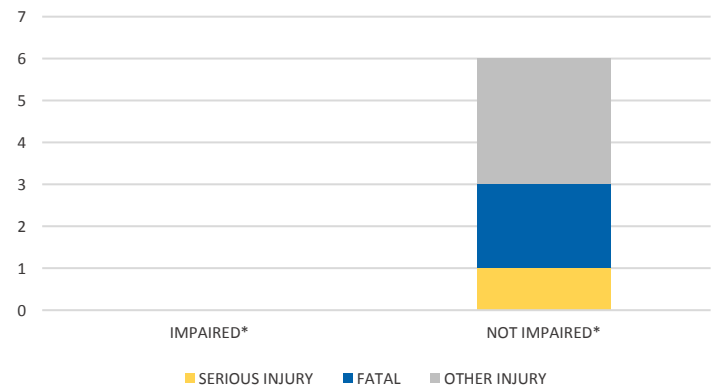
TIME OF DAY



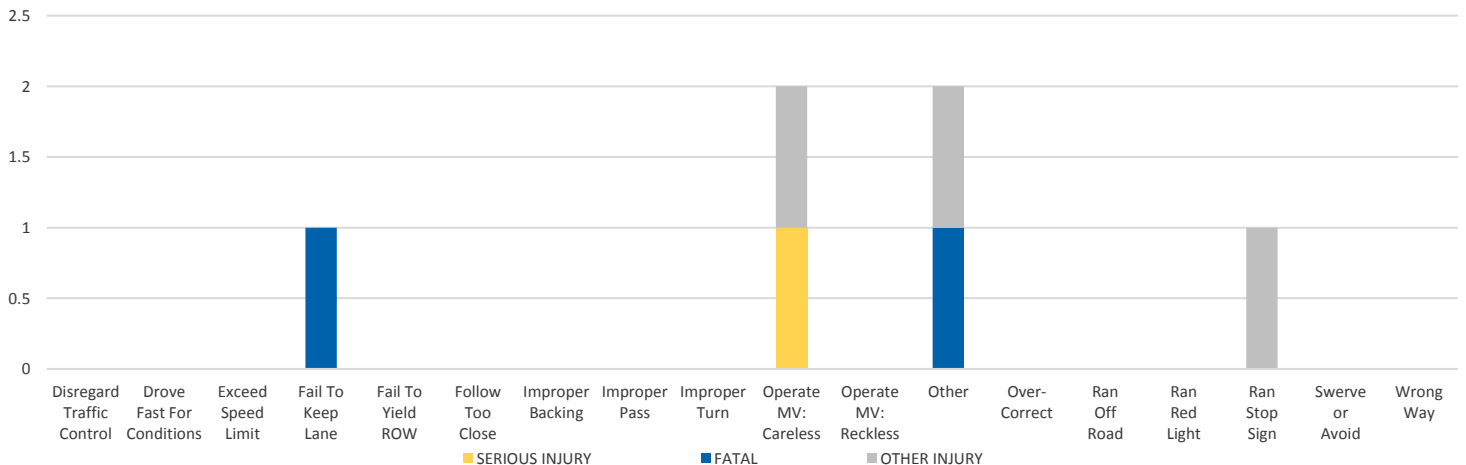
LOCATION ON ROADWAY



IMPAIRED



DRIVER CAUSE OF CRASH



NOTE: Fatal/Serious/Other Injury in bar graphs indicates persons not crashes.
SOURCES: 2019 CARS data (unofficial at time of report)