

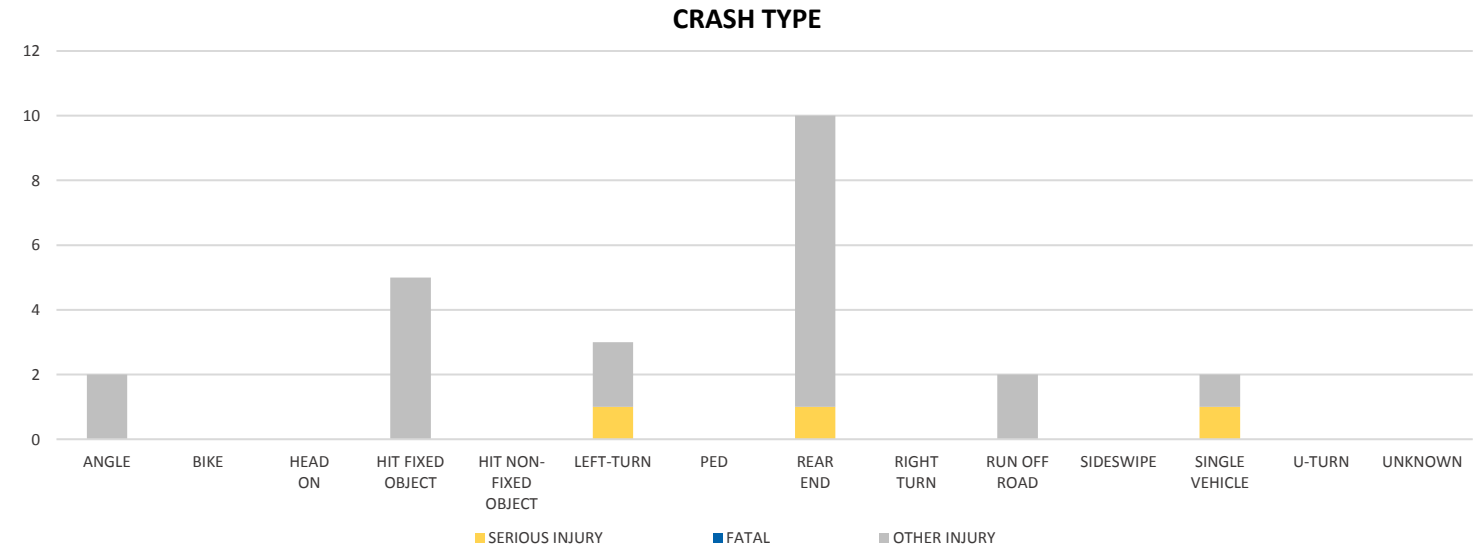
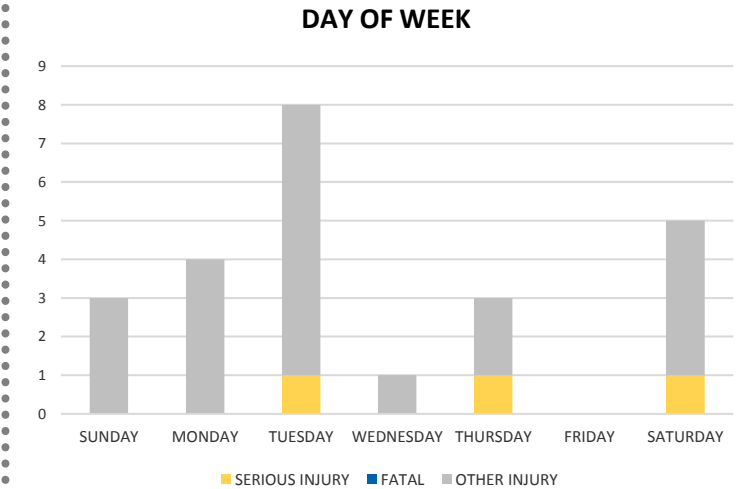
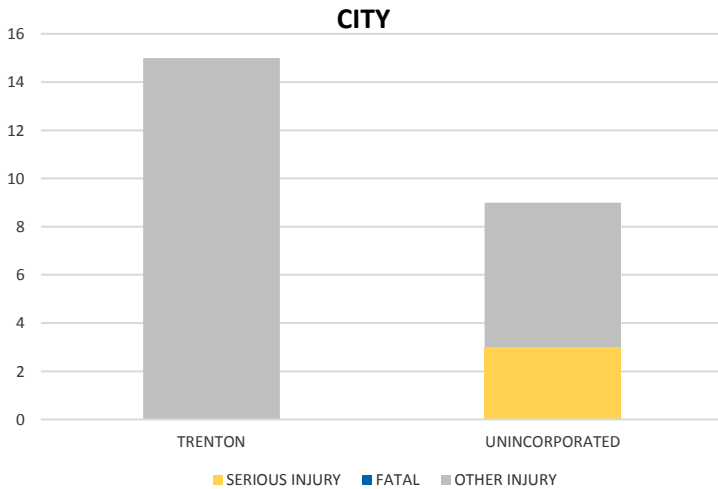
District 2 Community Traffic Safety Program



# GILCHRIST COUNTY 2019 Distracted Driving Crash Data Summary

Severity	Gilchrist County					District 2	
	Fatal	Incapacitating Injury	Non-Incapacitating Injury	Possible Injury	No Injury/ Property Damage Only*	Total	
Crashes	0	3	4	10	17	34	7,705
People Injured	0	3	4	17	N/A	24	4,242

**Note:** Crash severity is determined from the highest injury type in the crash (i.e. if a crash had both a fatal and a serious it is determined to be a fatal crash).



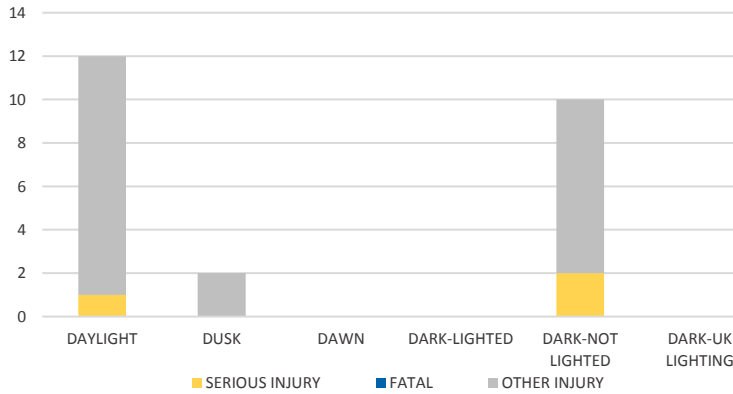
**NOTE:** Fatal/Serious/Other Injury in bar graphs indicates persons not crashes.  
**SOURCES:** 2019 CARS data (unofficial at time of report)

District 2 Community Traffic Safety Program

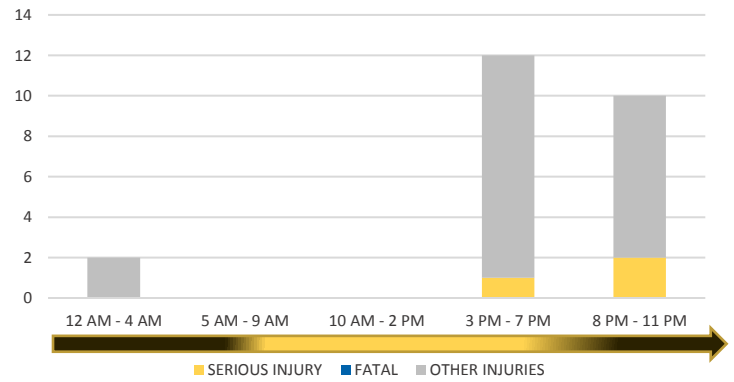


# GILCHRIST COUNTY 2019 Distracted Driving Crash Data Summary

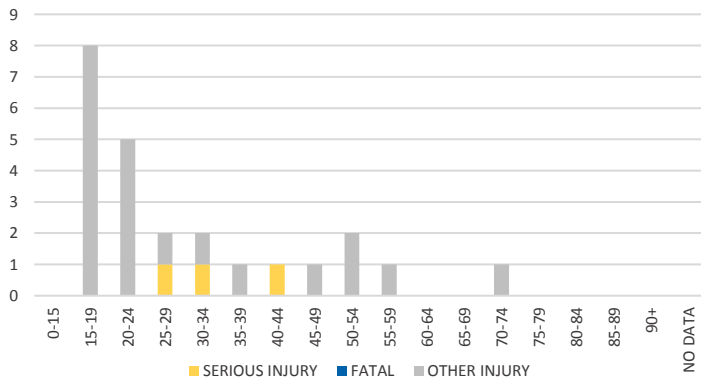
**LIGHTING**



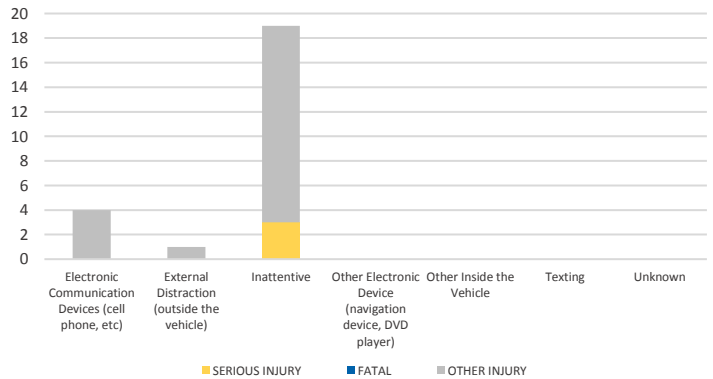
**TIME OF DAY**



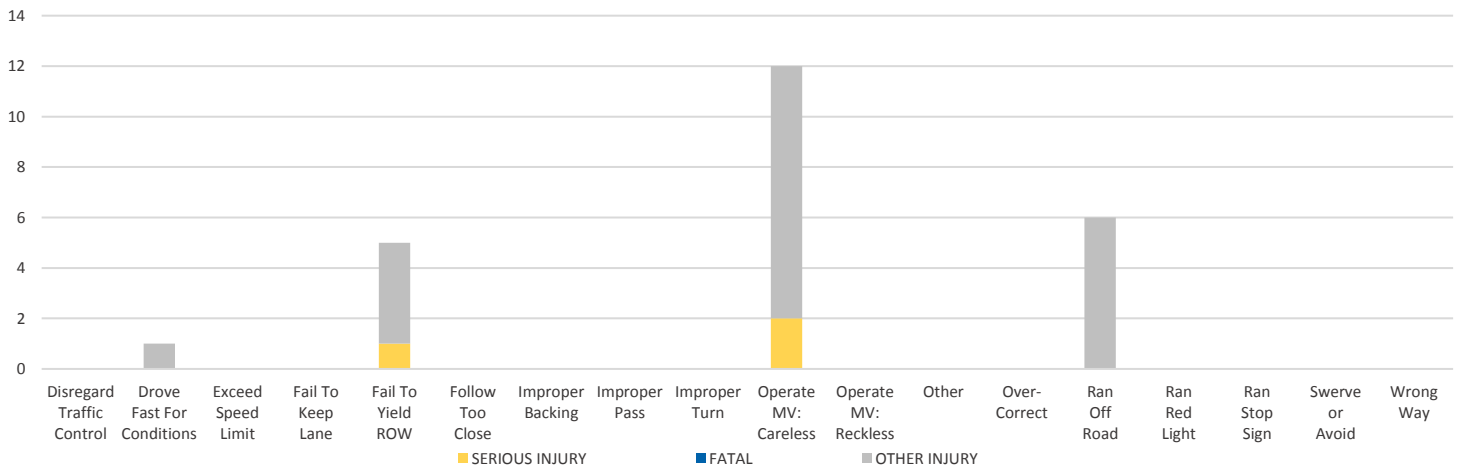
**AGE AT FAULT DRIVER**



**DISTRACTION TYPE**



**DRIVER CAUSE OF CRASH**



NOTE: Fatal/Serious/Other Injury in bar graphs indicates persons not crashes.  
SOURCES: 2019 CARS data (unofficial at time of report)