

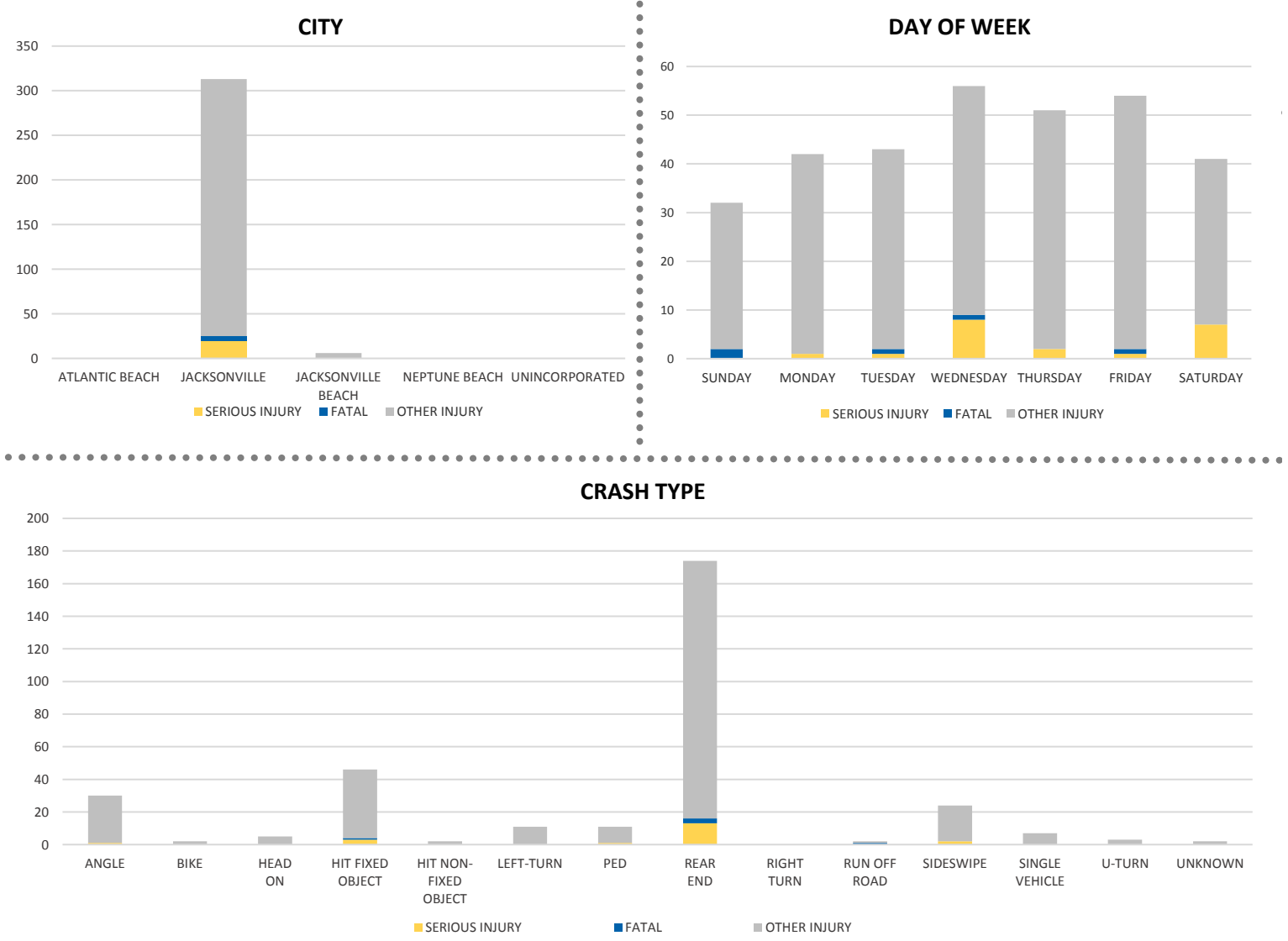
District 2 Community Traffic Safety Program



# DUVAL COUNTY 2019 Work Zone Crash Data Summary

Severity	Duval County					District 2	
	Fatal	Incapacitating Injury	Non-Incapacitating Injury	Possible Injury	No Injury/ Property Damage Only*	Total	
Crashes	5	15	46	134	514	714	1,059
People Injured	5	20	60	234	N/A	319	534

Note: Crash severity is determined from the highest injury type in the crash (i.e. if a crash had both a fatal and a serious it is determined to be a fatal crash).



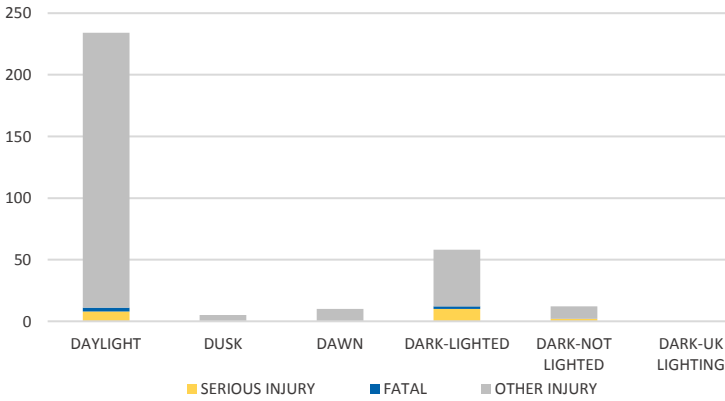
NOTE: Fatal/Serious/Other Injury in bar graphs indicates persons not crashes.  
 SOURCES: 2019 CARS data (unofficial at time of report)

District 2 Community Traffic Safety Program

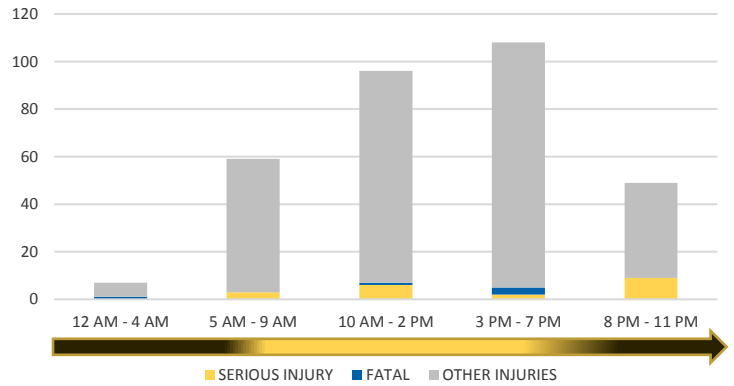


# DUVAL COUNTY 2019 Work Zone Crash Data Summary

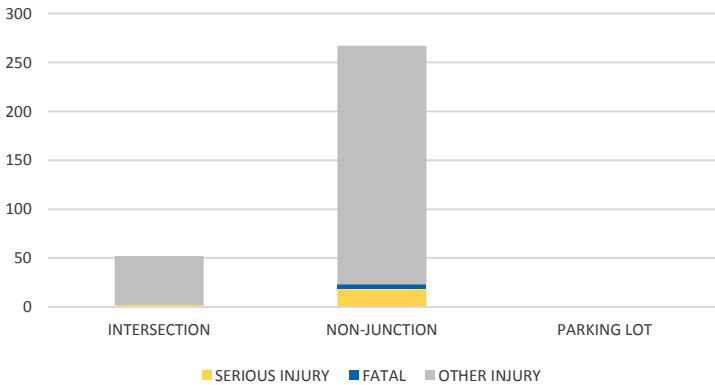
**LIGHTING**



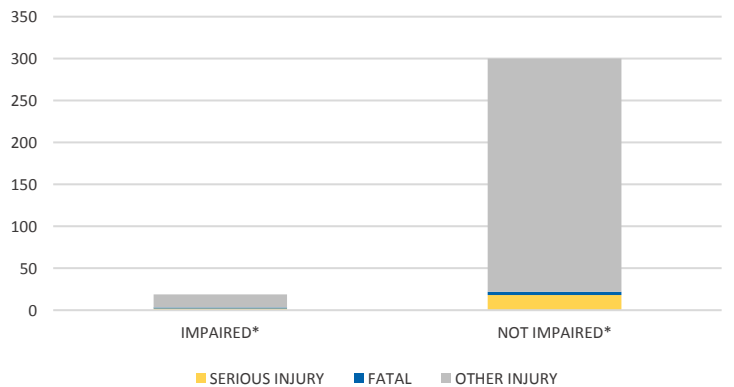
**TIME OF DAY**



**LOCATION ON ROADWAY**



**IMPAIRED**



**COMMERCIAL MOTOR VEHICLE (CMV) CRASHES VS TOTAL CRASHES**

Severity	CMV	All	% CMV
<i>Fatal</i>	0	5	0%
<i>Incapacitating Injury</i>	1	15	7%
<i>Non-Incapacitating Injury</i>	1	46	2%
<i>Possible Injury</i>	13	134	10%
<i>No Injury/Property Damage Only</i>	82	514	16%
<b>Total</b>	<b>97</b>	<b>714</b>	<b>14%</b>

NOTE: Fatal/Serious/Other Injury in bar graphs indicates persons not crashes.  
SOURCES: 2019 CARS data (unofficial at time of report)