

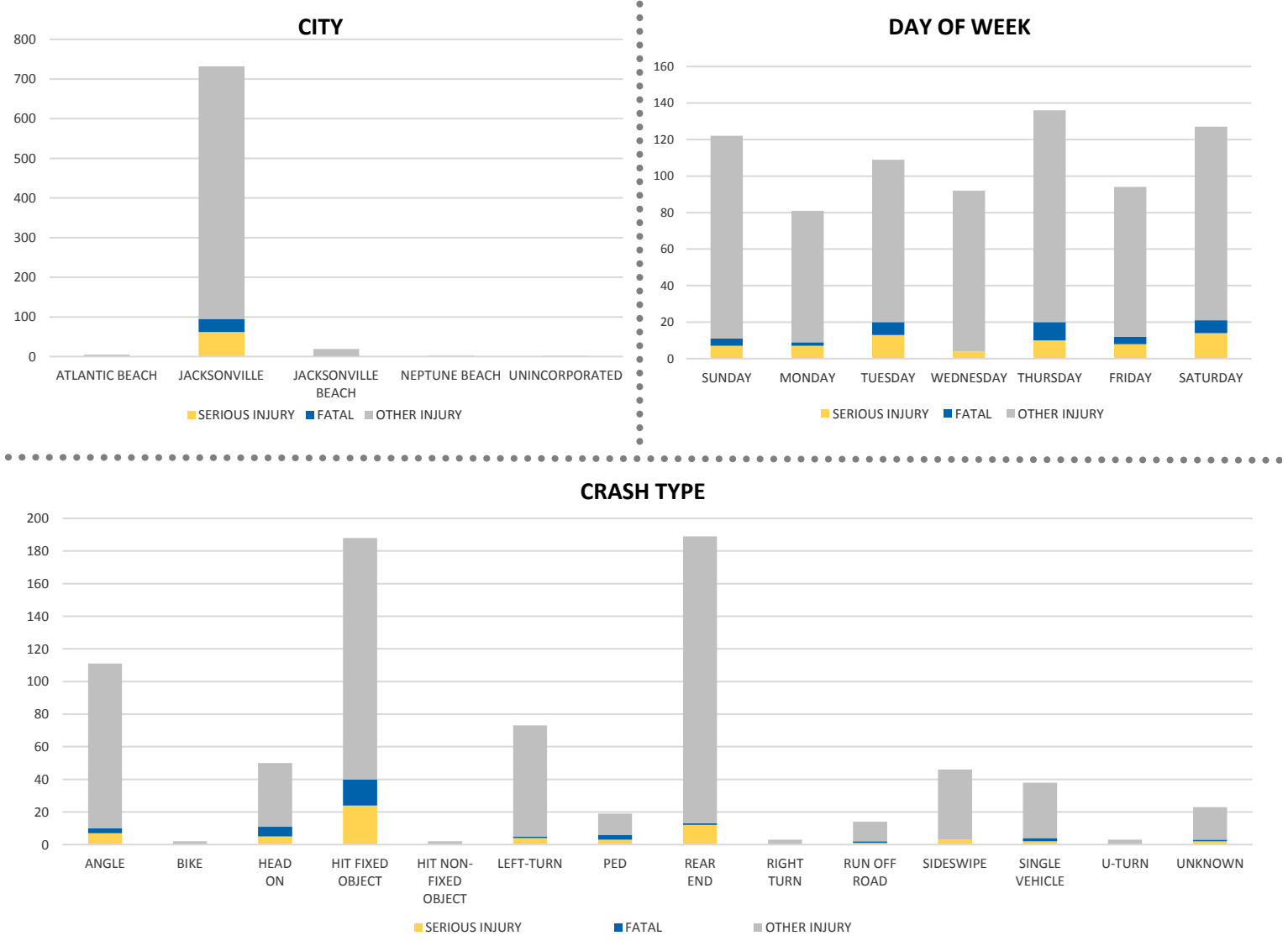
District 2 Community Traffic Safety Program



DUVAL COUNTY 2019 Occupant Protection (No Restraint) Crash Data Summary

Severity	Duval County					District 2	
	Fatal	Incapacitating Injury	Non-Incapacitating Injury	Possible Injury	No Injury/ Property Damage Only*	Total	
Crashes	33	46	143	197	464	883	1,776
People Injured	34	63	273	391	N/A	761	1,312

Note: Crash severity is determined from the highest injury type in the crash (i.e. if a crash had both a fatal and a serious it is determined to be a fatal crash).



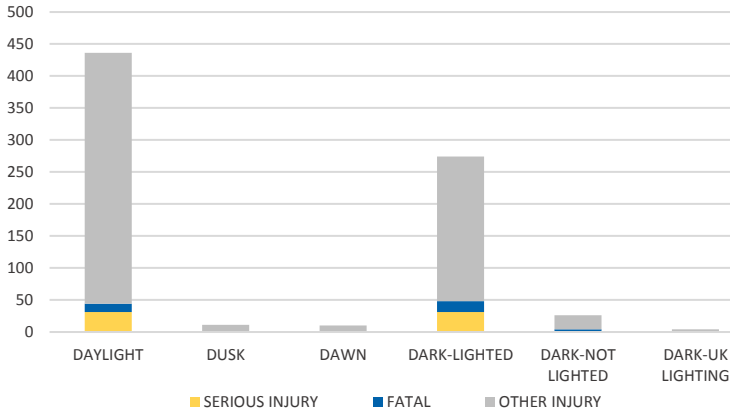
NOTE: Fatal/Serious/Other Injury in bar graphs indicates persons not crashes.
SOURCES: 2019 CARS data (unofficial at time of report)

District 2 Community Traffic Safety Program

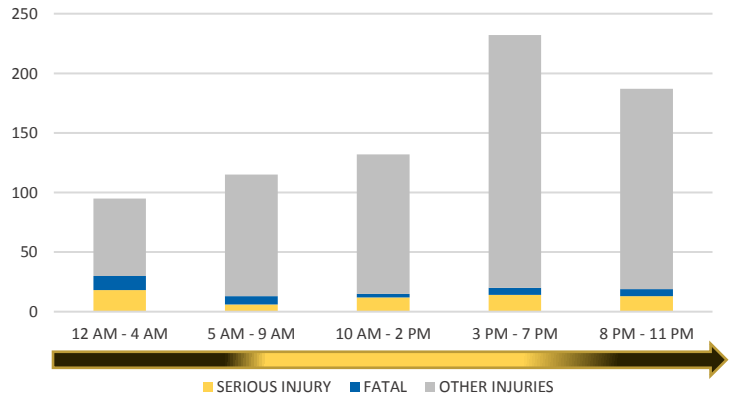


DUVAL COUNTY 2019 Occupant Protection (No Restraint) Crash Data Summary

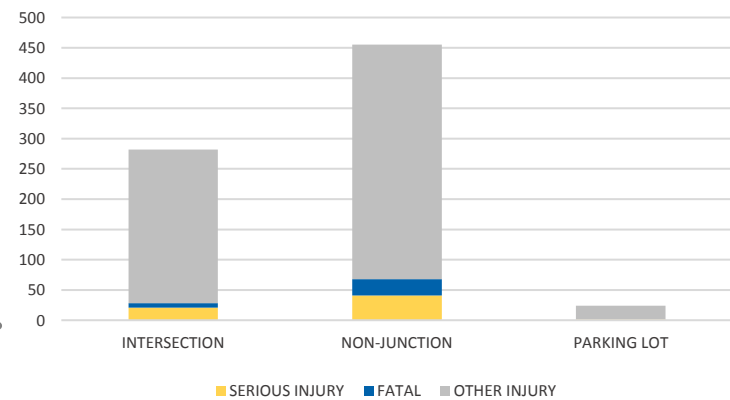
LIGHTING



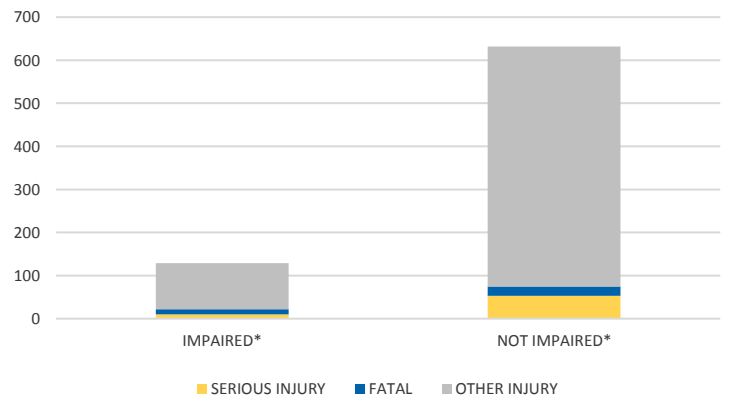
TIME OF DAY



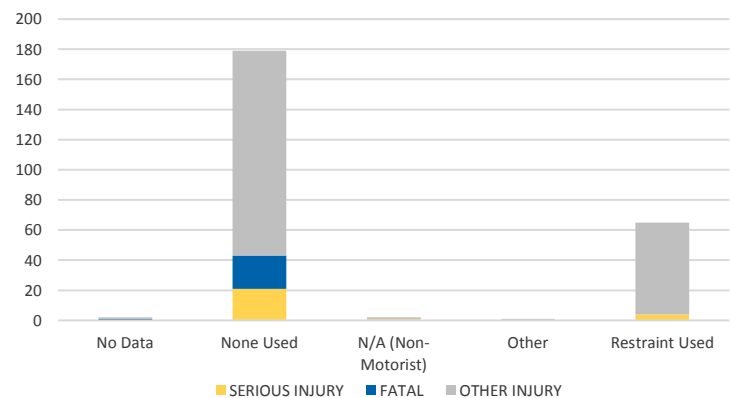
LOCATION ON ROADWAY



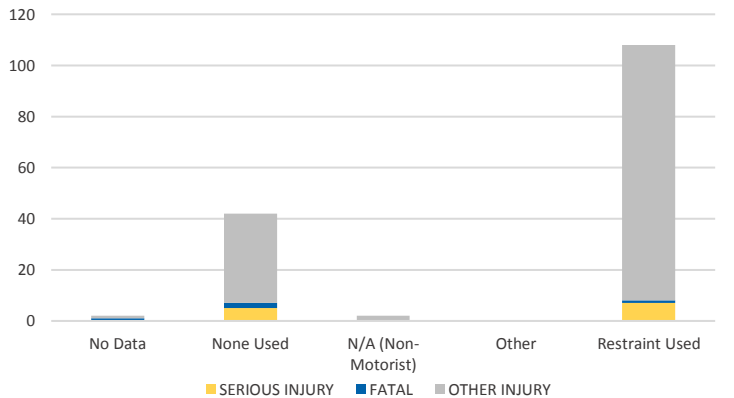
IMPAIRED



DRIVER 1 - RESTRAINT TYPE



DRIVER 2 - RESTRAINT TYPE



NOTE: Fatal/Serious/Other Injury in bar graphs indicates persons not crashes.
SOURCES: 2019 CARS data (unofficial at time of report)