

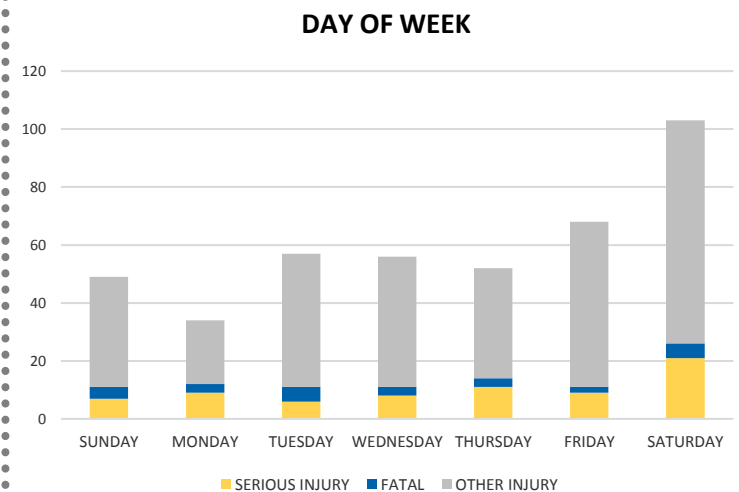
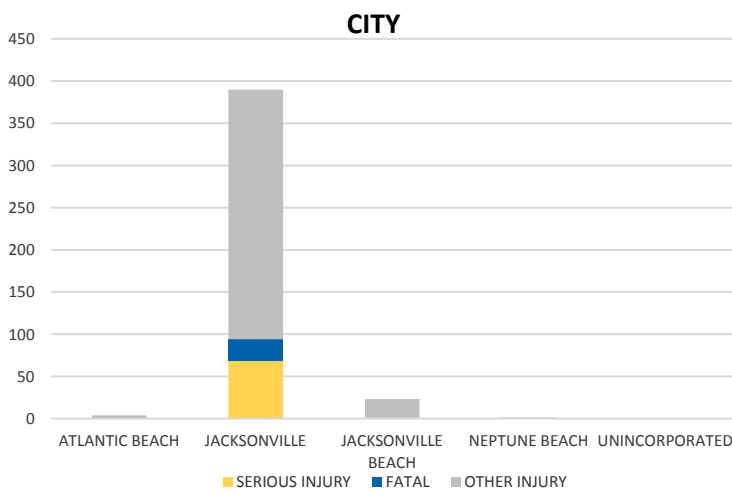
District 2 Community Traffic Safety Program



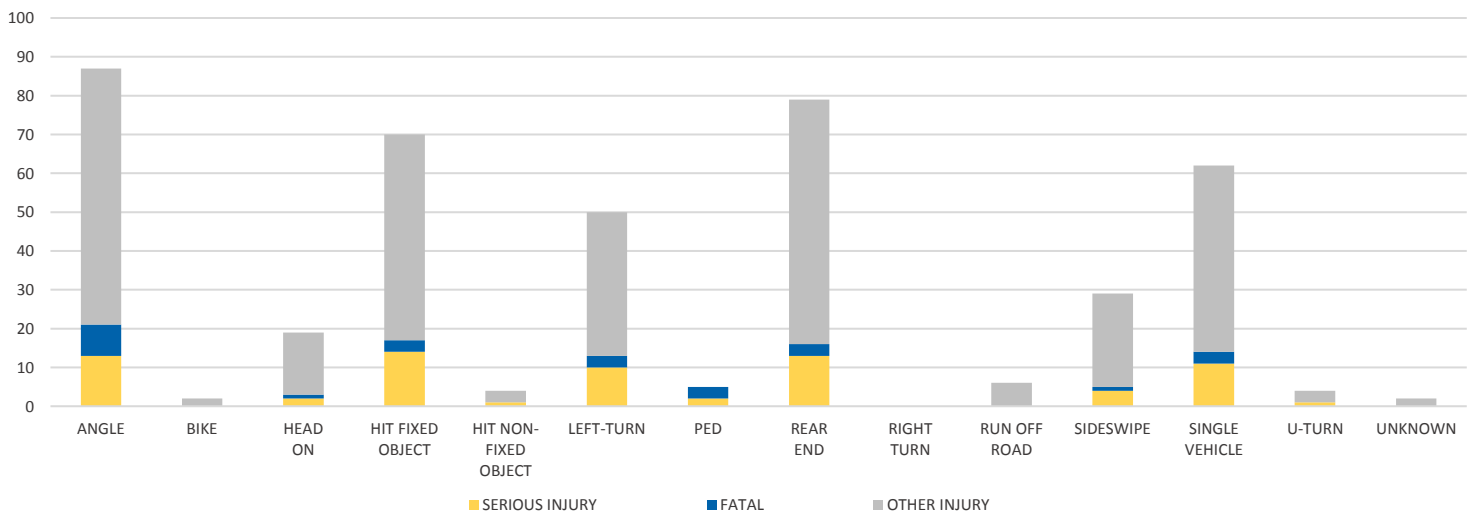
DUVAL COUNTY 2019 Motorcycle Crash Data Summary

Severity	Duval County					District 2	
	Fatal	Incapacitating Injury	Non-Incapacitating Injury	Possible Injury	No Injury/ Property Damage Only*	Total	
Crashes	25	65	171	88	100	449	854
People Injured	25	71	186	137	N/A	419	857

Note: Crash severity is determined from the highest injury type in the crash (i.e. if a crash had both a fatal and a serious it is determined to be a fatal crash).



CRASH TYPE



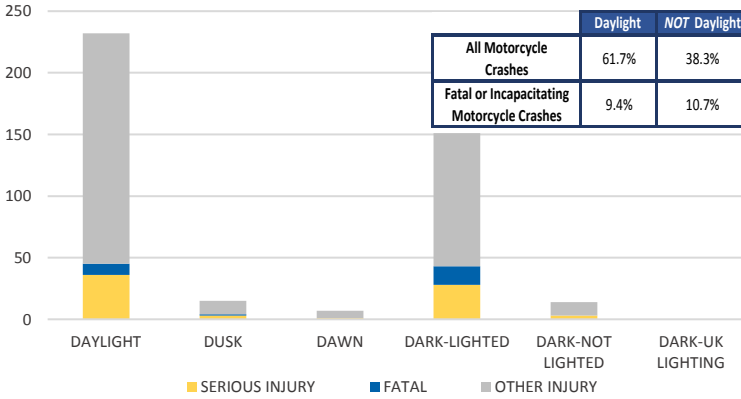
NOTE: Fatal/Serious/Other Injury in bar graphs indicates persons not crashes.
SOURCES: 2019 CARS data (unofficial at time of report)

District 2 Community Traffic Safety Program

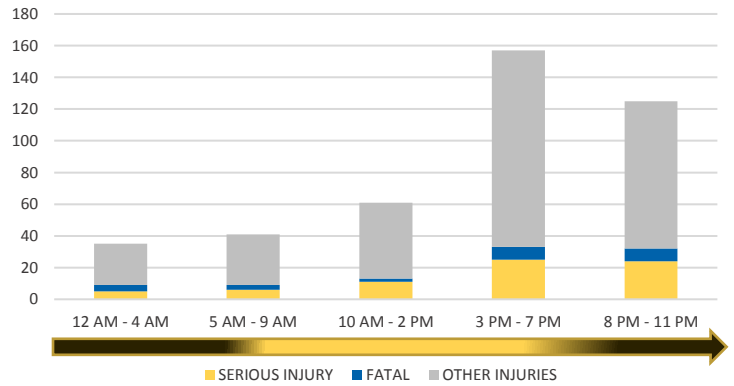


DUVAL COUNTY 2019 Motorcycle Crash Data Summary

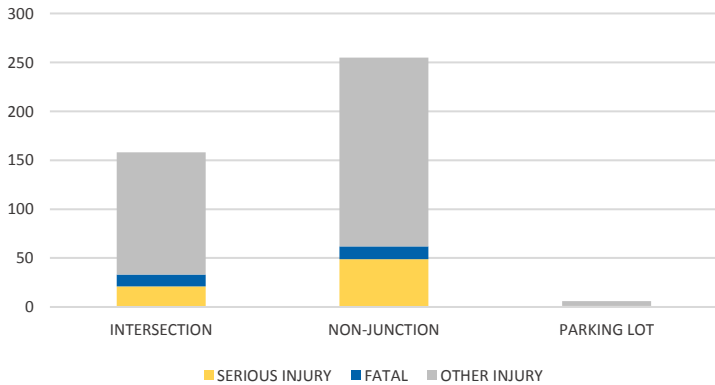
LIGHTING



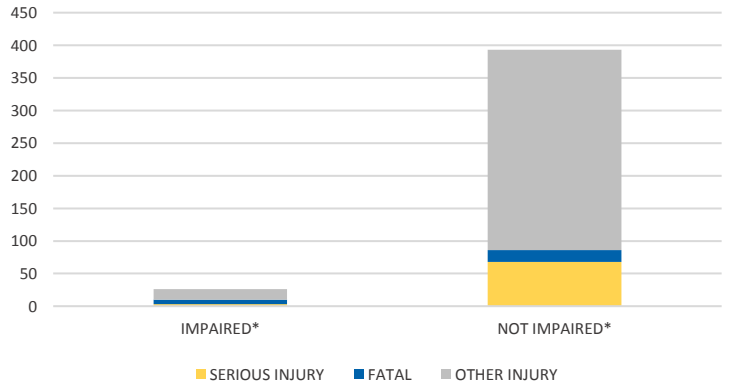
TIME OF DAY



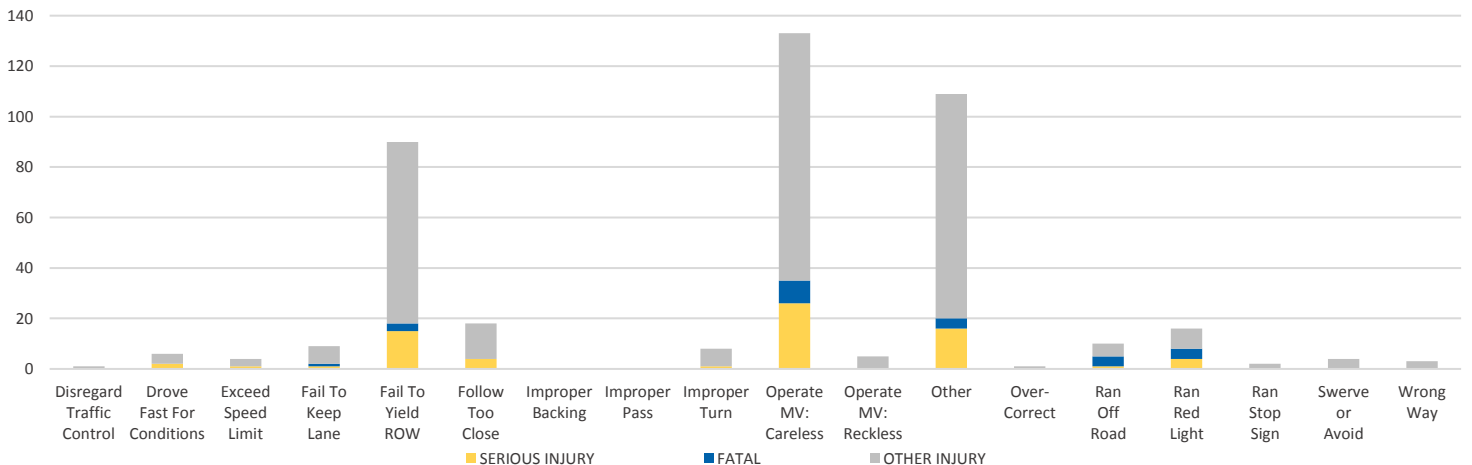
LOCATION ON ROADWAY



IMPAIRED



DRIVER CAUSE OF CRASH



NOTE: Fatal/Serious/Other Injury in bar graphs indicates persons not crashes.

SOURCES: 2019 CARS data (unofficial at time of report)

DATE GENERATED: 1/7/2020