

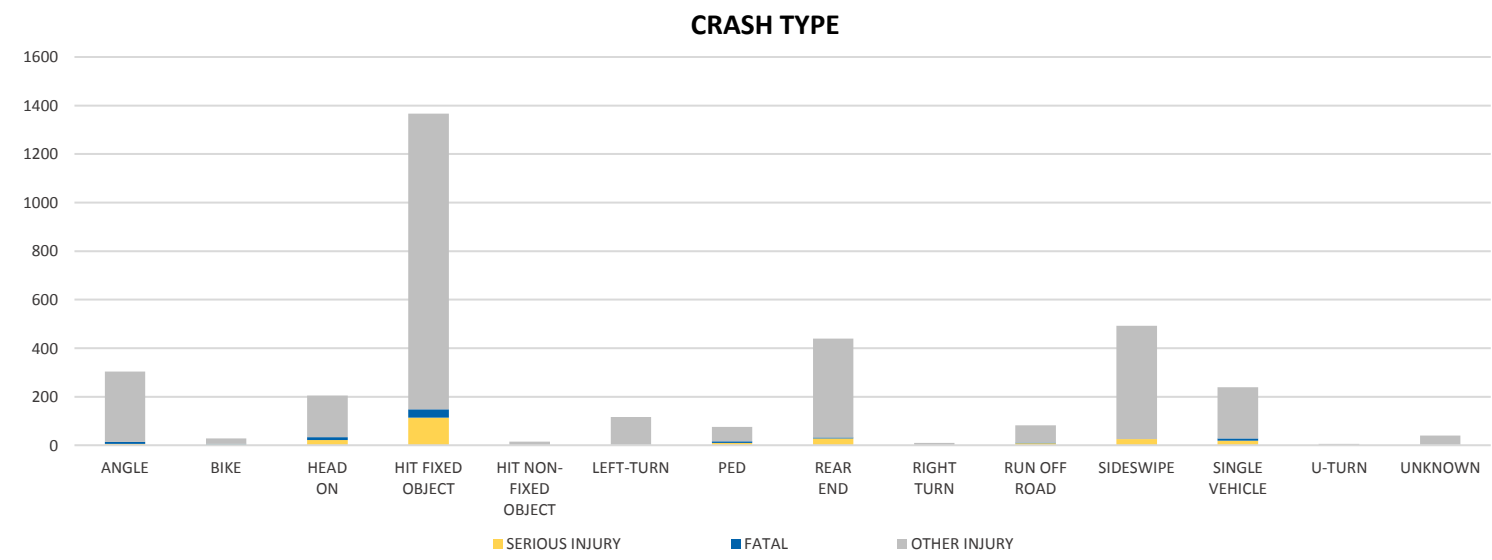
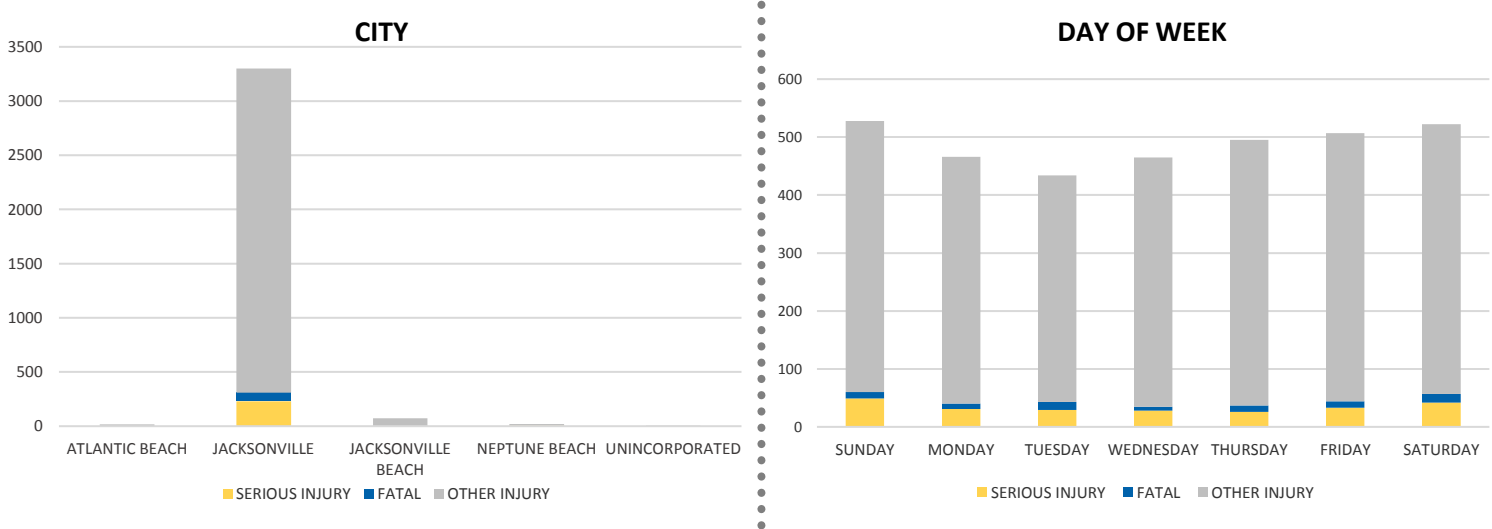
District 2 Community Traffic Safety Program



DUVAL COUNTY 2019 Lane Departure Crash Data Summary

Severity	Duval County					District 2	
	Fatal	Incapacitating Injury	Non-Incapacitating Injury	Possible Injury	No Injury/ Property Damage Only*	Total	
Crashes	76	200	901	1,339	10,344	12,860	21,597
People Injured	78	238	1,162	1,939	N/A	3,417	7,696

Note: Crash severity is determined from the highest injury type in the crash (i.e. if a crash had both a fatal and a serious it is determined to be a fatal crash).



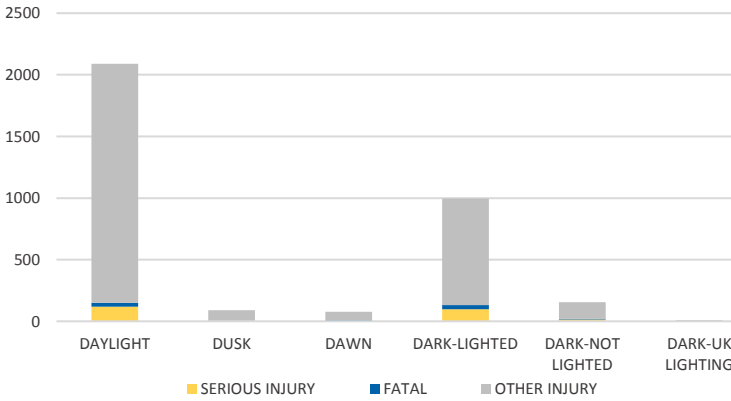
NOTE: Fatal/Serious/Other Injury in bar graphs indicates persons not crashes.
SOURCES: 2019 CARS data (unofficial at time of report)

District 2 Community Traffic Safety Program

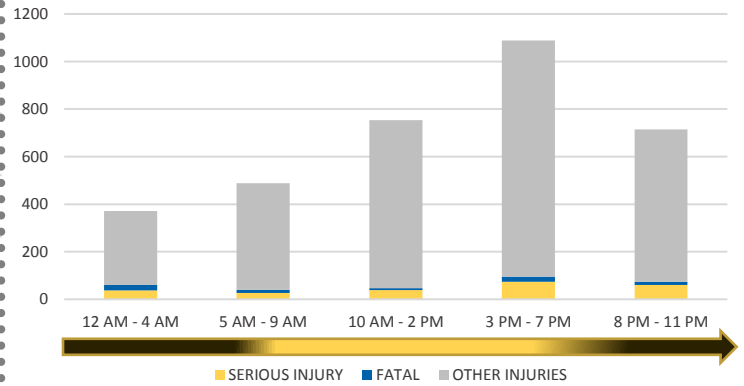


DUVAL COUNTY 2019 Lane Departure Crash Data Summary

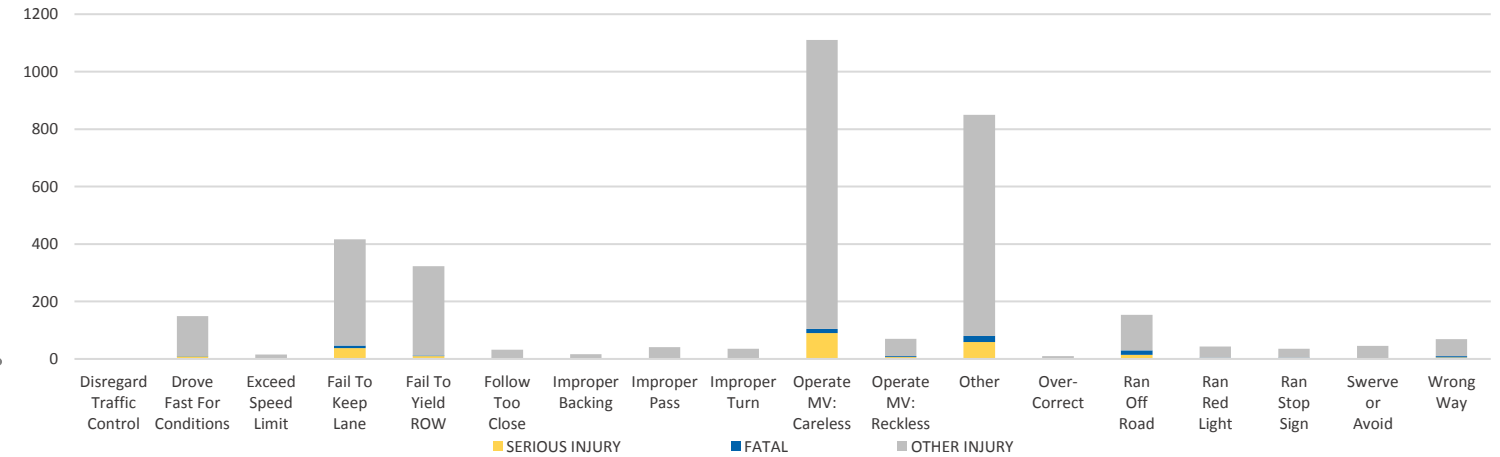
LIGHTING



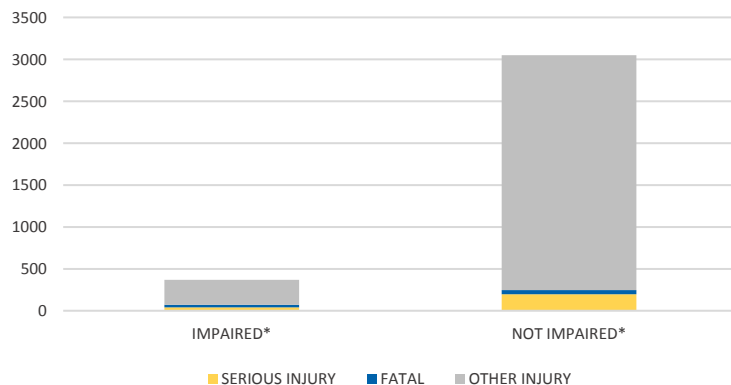
TIME OF DAY



DRIVER CAUSE OF CRASH



IMPAIRED



ROAD CLASSIFICATION	2-LANE	MULTILANE	OTHER	TOTAL
INTERSTATE/EXPRESSWAY	-	608	-	608
URBAN	10	271	1,006	1,287
SUBURBAN	42	69	1	112
RURAL	3	0	7	10
PARKING LOT	-	-	2,919	2,919
UNDOCUMENTED	-	-	7,734	7,734
ON- & OFF-RAMP	-	-	190	190
TOTAL	55	948	11,857	12,860

NOTE: Fatal/Serious/Other Injury in bar graphs indicates persons not crashes.
SOURCES: 2019 CARS data (unofficial at time of report)