

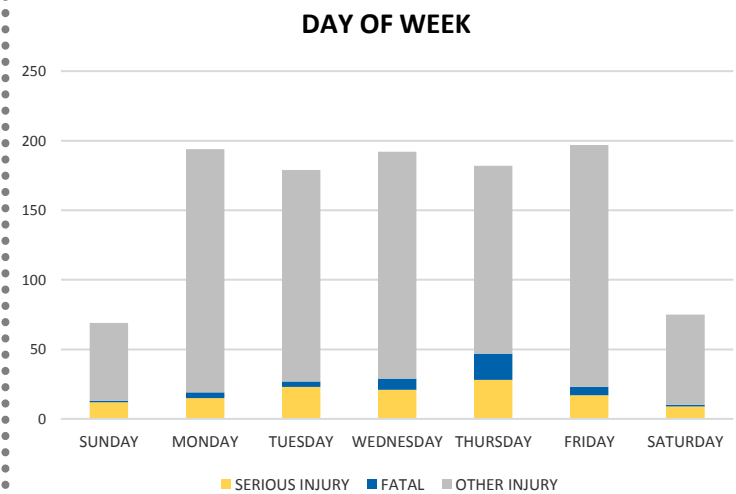
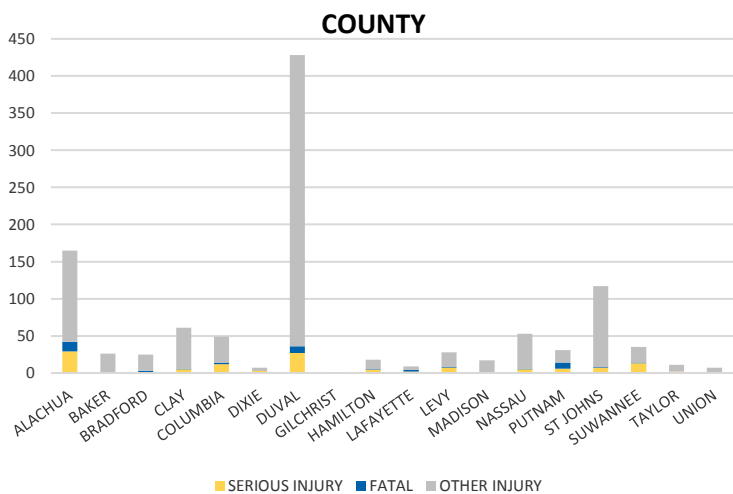
District 2 Community Traffic Safety Program



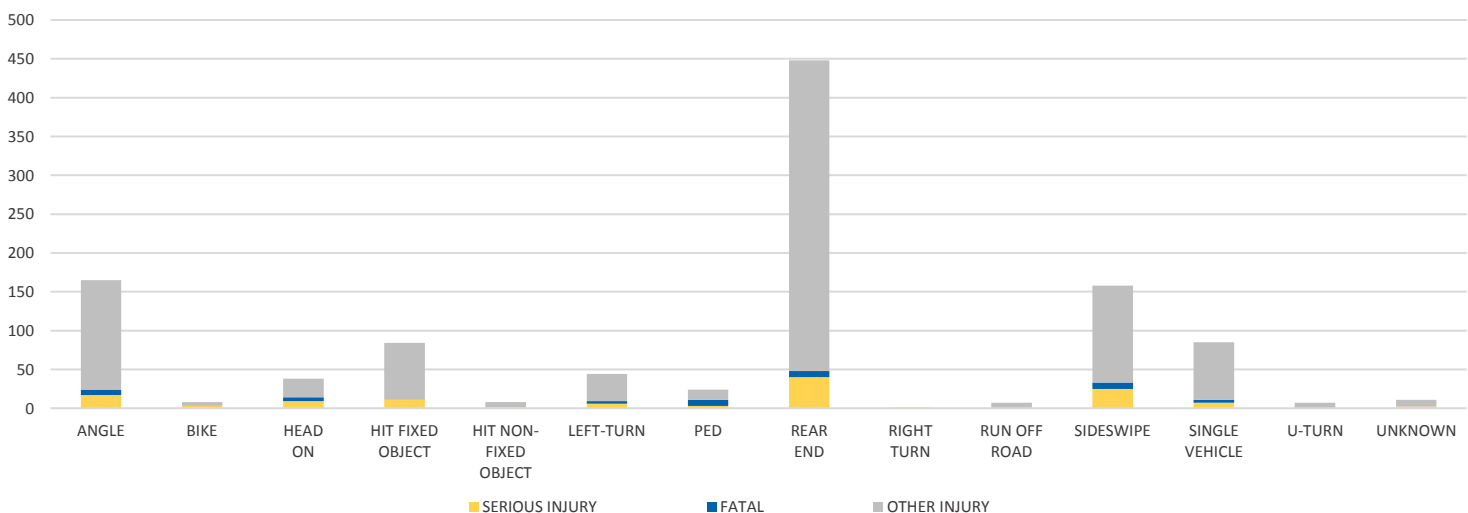
DISTRICTWIDE 2019 Commerical Motor Vehicles Crash Data Summary

| Severity | District 2 | | | | | Statewide | |
|----------------|------------|-----------------------|---------------------------|-----------------|----------------------------------|-----------|--------|
| | Fatal | Incapacitating Injury | Non-Incapacitating Injury | Possible Injury | No Injury/ Property Damage Only* | Total | |
| Crashes | 34 | 91 | 232 | 400 | 3,084 | 3,841 | 24,697 |
| People Injured | 43 | 125 | 337 | 583 | N/A | 1,088 | 7,137 |

Note: Crash severity is determined from the highest injury type in the crash (i.e. if a crash had both a fatal and a serious it is determined to be a fatal crash).



CRASH TYPE



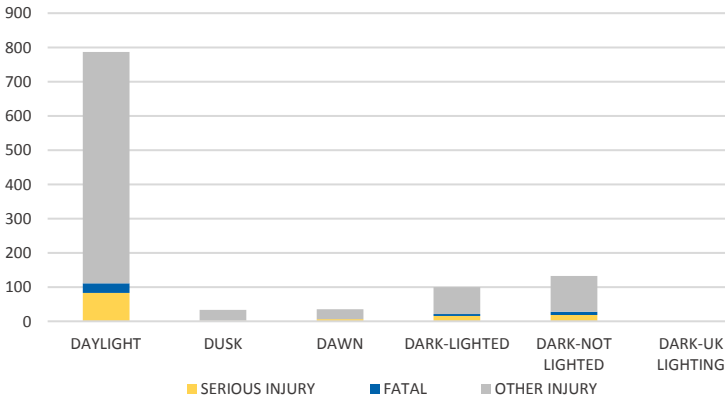
NOTE: Fatal/Serious/Other Injury in bar graphs indicates persons not crashes.
SOURCES: 2019 CARS data (unofficial at time of report)

District 2 Community Traffic Safety Program

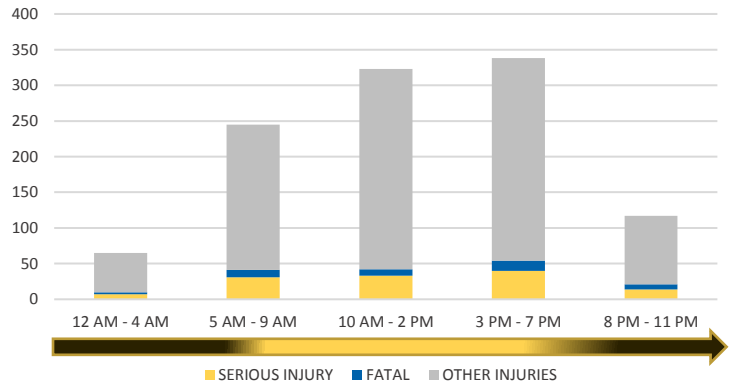


DISTRICTWIDE 2019 Commerical Motor Vehicles Crash Data Summary

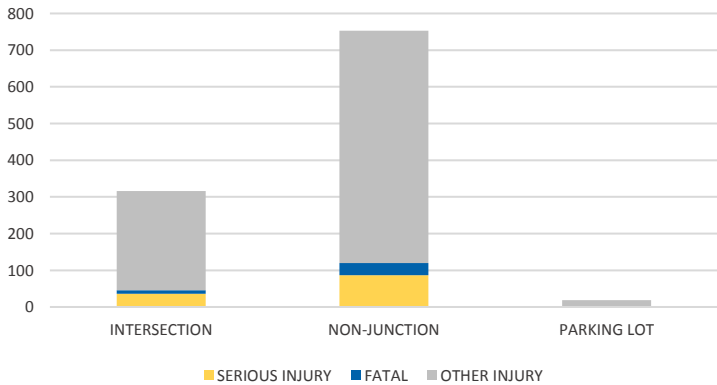
LIGHTING



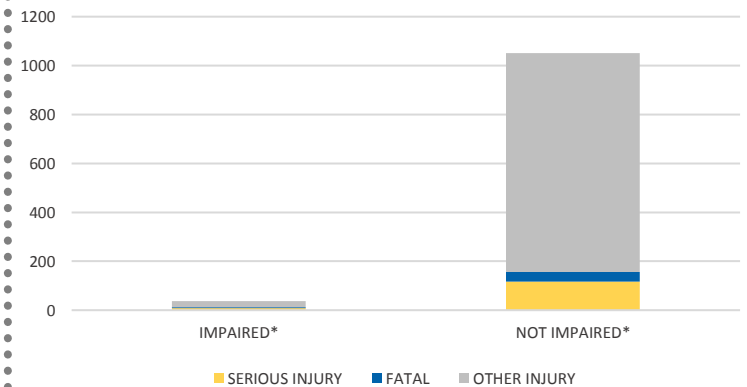
TIME OF DAY



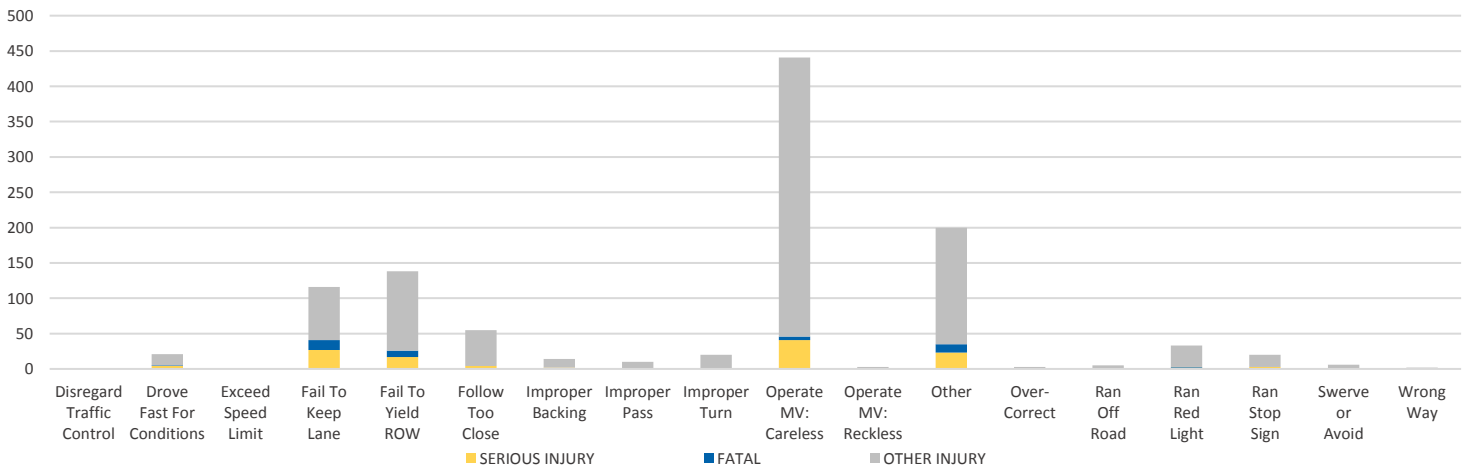
LOCATION ON ROADWAY



IMPAIRED



DRIVER CAUSE OF CRASH



NOTE: Fatal/Serious/Other Injury in bar graphs indicates persons not crashes.
 SOURCES: 2019 CARS data (unofficial at time of report)