

District 2 Community Traffic Safety Program

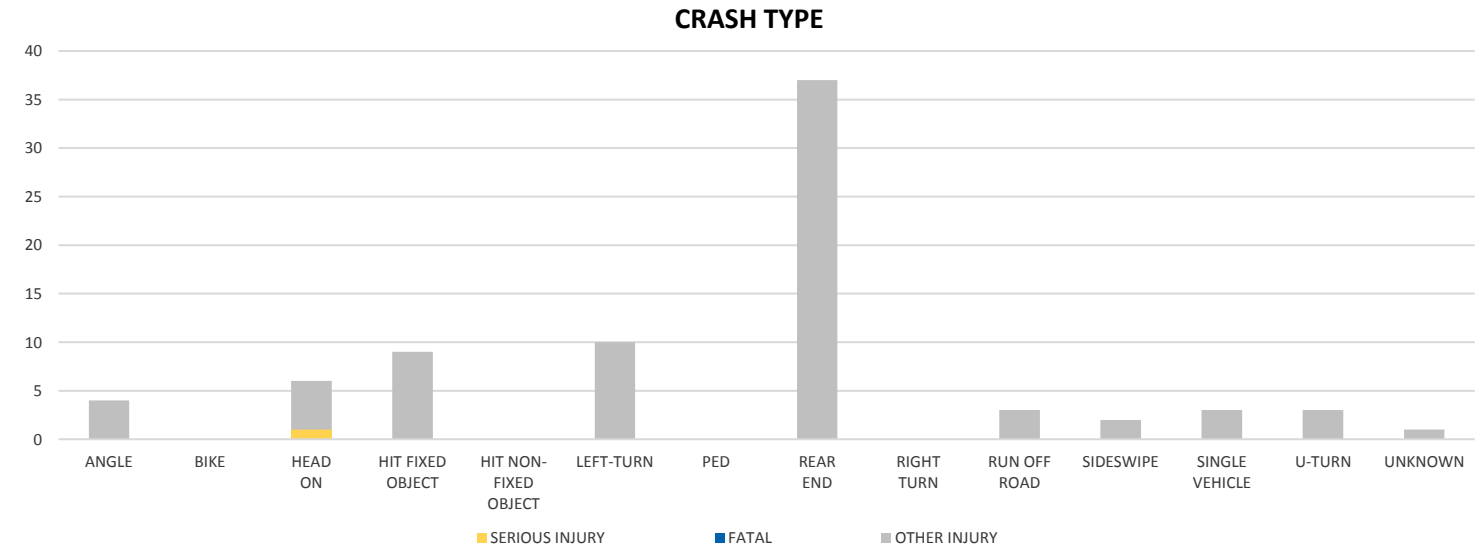
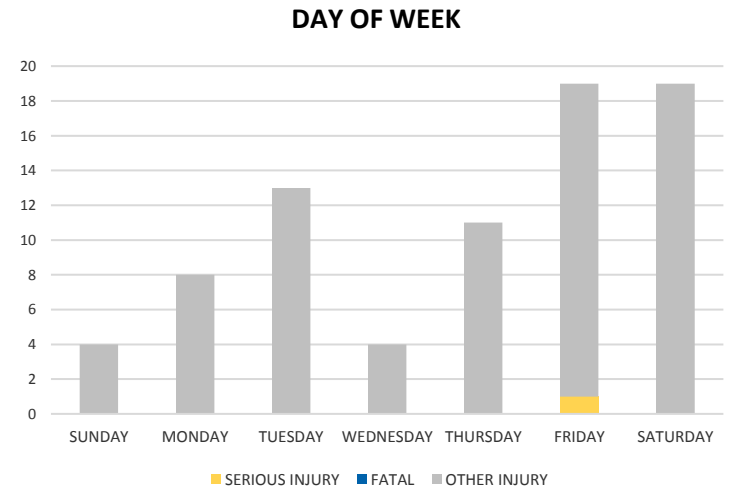
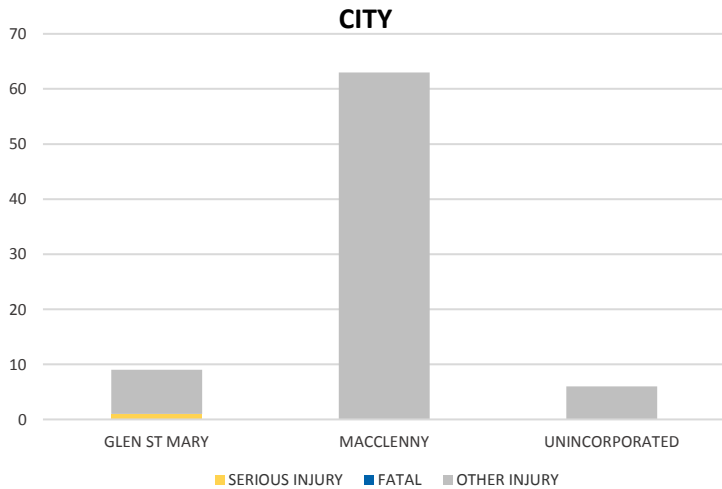


# BAKER COUNTY

## 2019 Distracted Driving Crash Data Summary

| Severity       | Baker County |                       |                           |                 |                                  | District 2 |       |
|----------------|--------------|-----------------------|---------------------------|-----------------|----------------------------------|------------|-------|
|                | Fatal        | Incapacitating Injury | Non-Incapacitating Injury | Possible Injury | No Injury/ Property Damage Only* | Total      |       |
| Crashes        | 0            | 1                     | 23                        | 23              | 40                               | 87         | 7,705 |
| People Injured | 0            | 1                     | 32                        | 45              | N/A                              | 78         | 4,242 |

Note: Crash severity is determined from the highest injury type in the crash (i.e. if a crash had both a fatal and a serious it is determined to be a fatal crash).



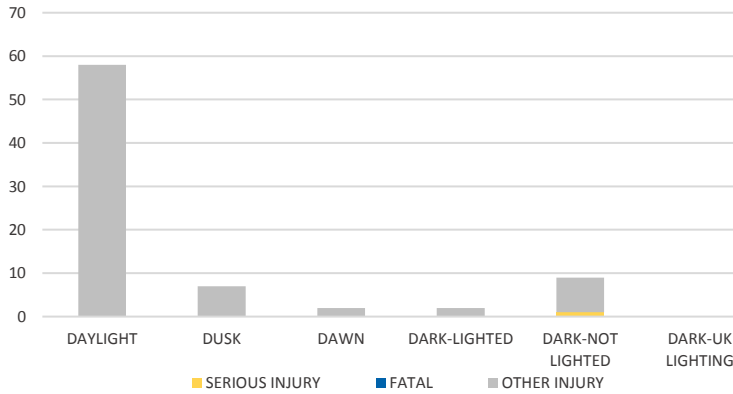
NOTE: Fatal/Serious/Other Injury in bar graphs indicates persons not crashes.  
 SOURCES: 2019 CARS data (unofficial at time of report)

District 2 Community Traffic Safety Program

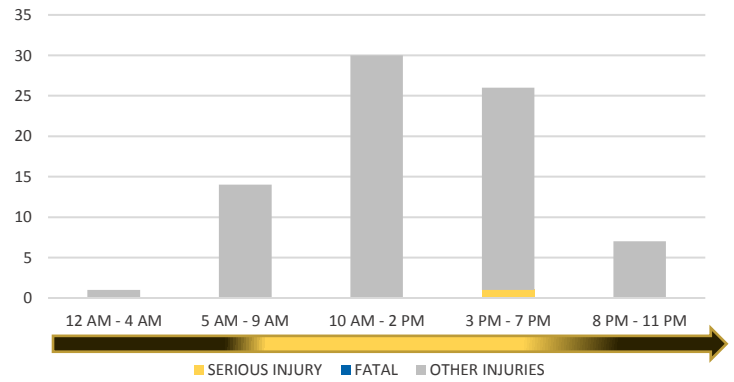


# BAKER COUNTY 2019 Distracted Driving Crash Data Summary

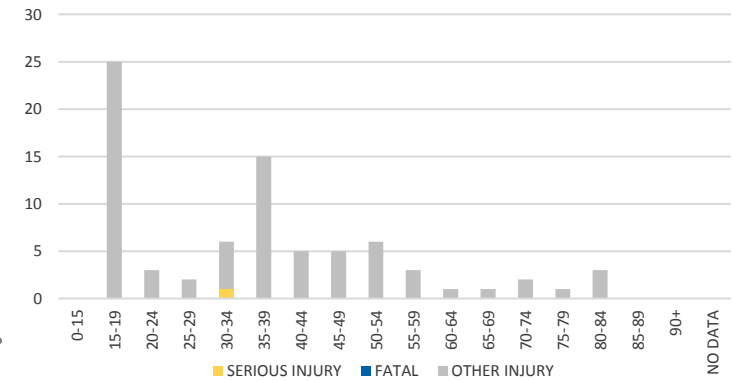
**LIGHTING**



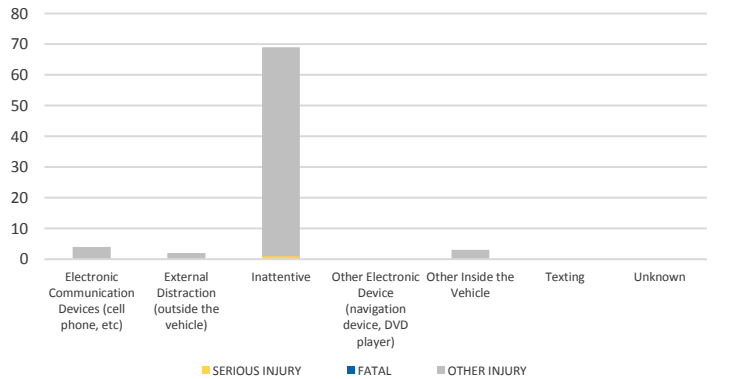
**TIME OF DAY**



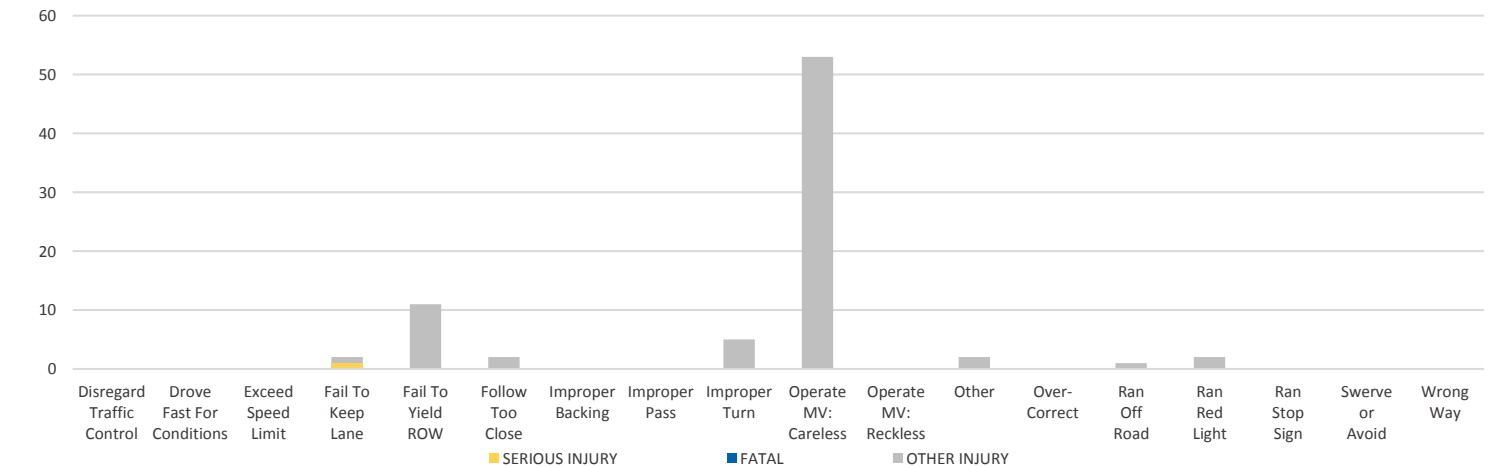
**AGE AT FAULT DRIVER**



**DISTRACTION TYPE**



**DRIVER CAUSE OF CRASH**



NOTE: Fatal/Serious/Other Injury in bar graphs indicates persons not crashes.  
SOURCES: 2019 CARS data (unofficial at time of report)