

# BAKER COUNTY

## District 2 Community Traffic Safety Program



### 2017 Lane Departure Crash Data Summary

239 Crashes • 5 Fatal • 8 Incapacitating • 47 Non-Incapacitating • 48 Possible Injury • 131 PDO\*

TOTAL  
CRASHES

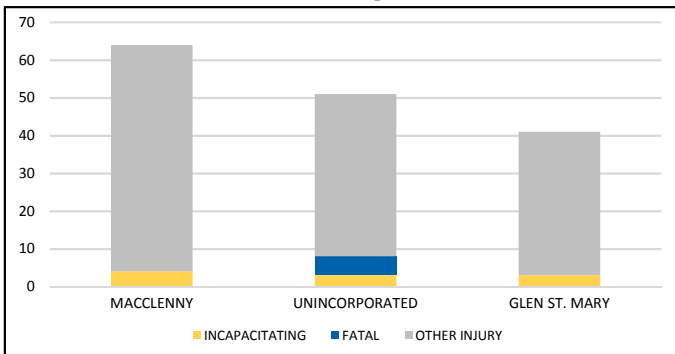
Note: Crash severity is determined from the highest injury type in the crash (i.e. if a crash had both a fatal and an incapacitating, it is determined to be a fatal crash).

\*PDO - Property Damage Only

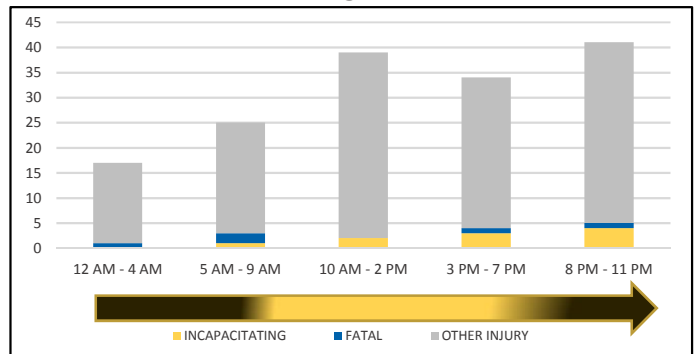
PEOPLE KILLED  
OR INJURED

5 Fatalities • 10 Incapacitating Injuries • 141 Other Injuries

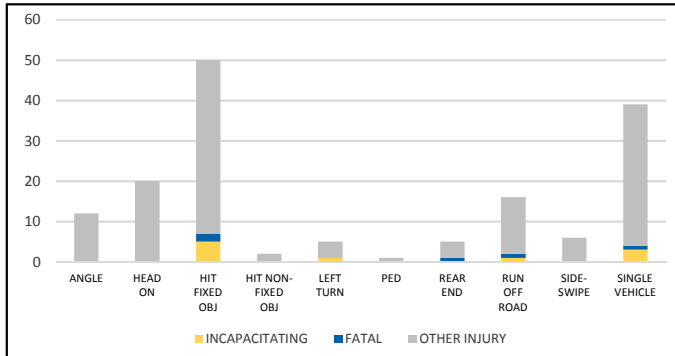
#### CITIES



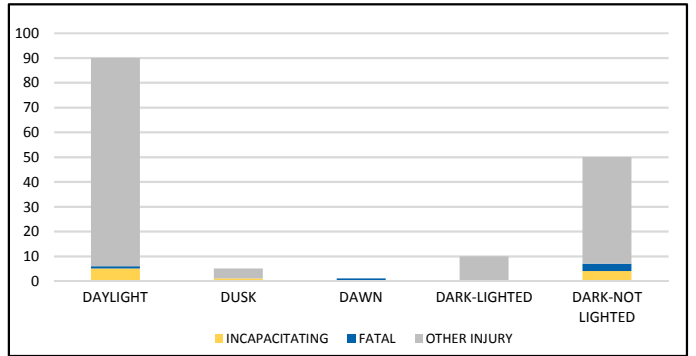
#### TIME OF DAY



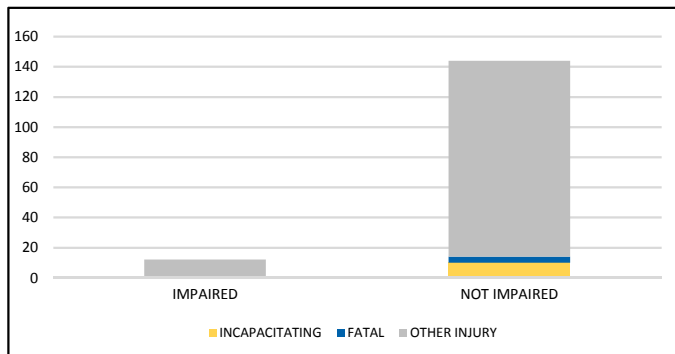
#### CRASH TYPE



#### LIGHTING



#### IMPAIRED



#### ROAD CLASSIFICATION

	2-Lane	Multilane	Total
Interstate/Expressway	1	6	7
Urban	0	0	0
Rural	3	0	3
Undocumented	3	0	3
<b>Total</b>	<b>7</b>	<b>6</b>	<b>13</b>

Note: Fatal and incapacitating injury crashes only.

NOTE: Incapacitating/Fatal/Other Injury in graphs indicates persons not crashes.

SOURCE: 2017 CARS data (unofficial at time of report)

DATE GENERATED: 9/14/2018