

# MADISON COUNTY

## District 2 Community Traffic Safety Program



### 2017 Teen Road User Crash Data Summary

These crashes have been manually reviewed to determine at-fault road user was between the ages of 15 and 19 years old.

**37 Crashes • 0 Fatal • 0 Incapacitating • 7 Non-Incapacitating • 6 Possible Injury • 24 PDO\***

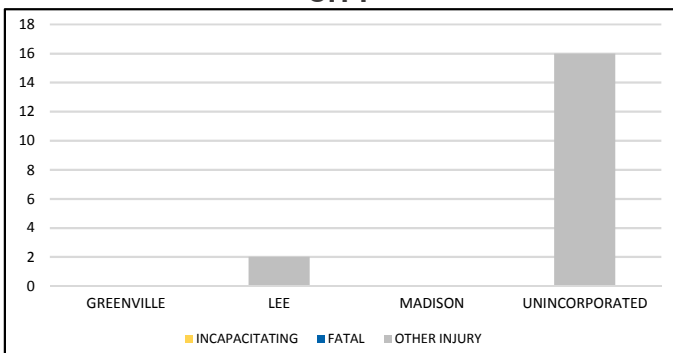
**TOTAL  
CRASHES**

Note: Crash severity is determined from the highest injury type in the crash (i.e. if a crash had both a fatal and an incapacitating, it is determined to be a fatal crash).  
\*PDO - Property Damage Only

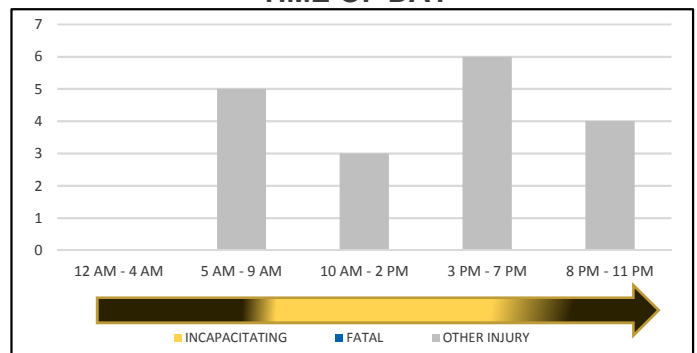
**PEOPLE KILLED  
OR INJURED**

**0 Fatalities • 0 Incapacitating Injuries • 18 Other Injuries**

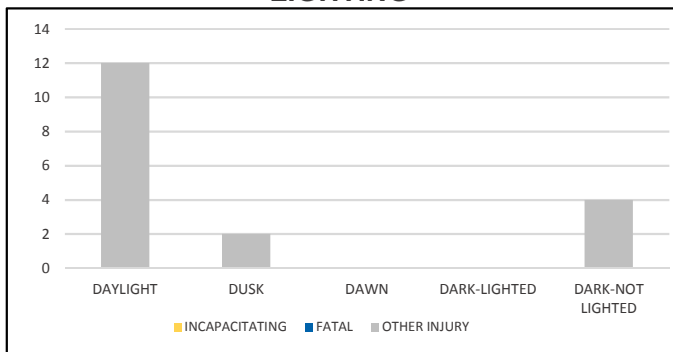
**CITY**



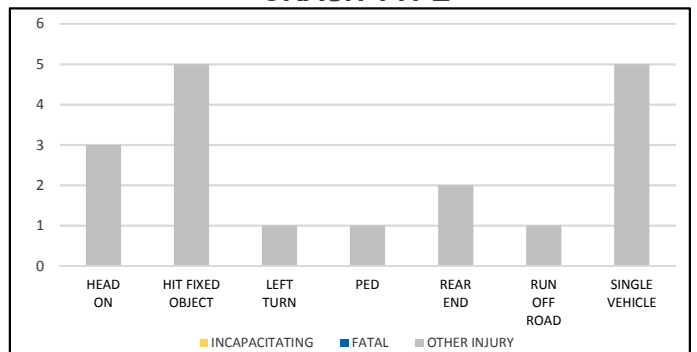
**TIME OF DAY**



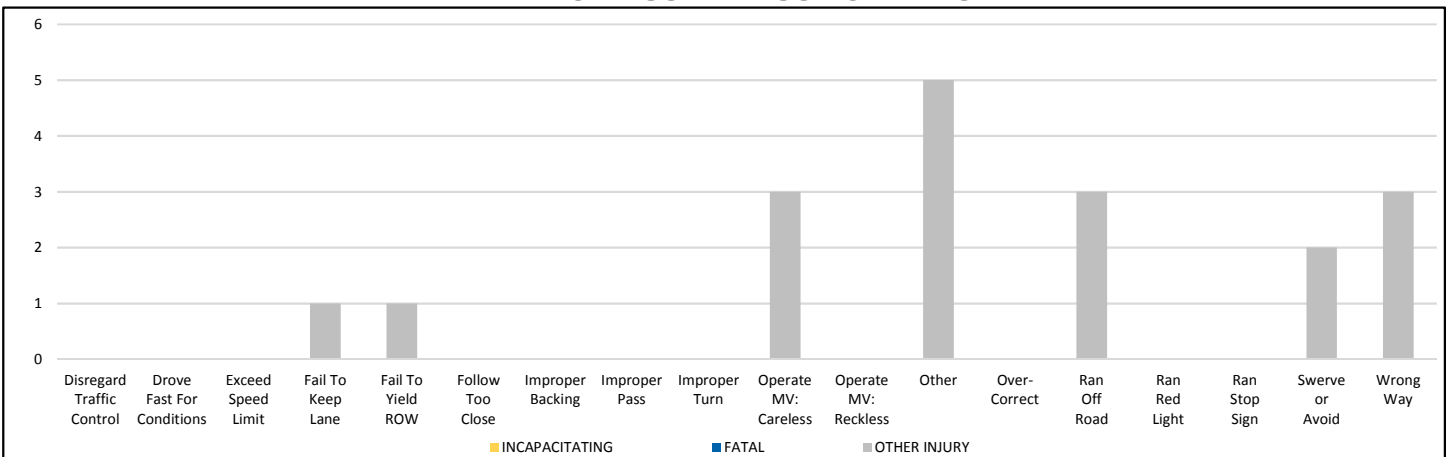
**LIGHTING**



**CRASH TYPE**



**TEEN ROAD USER CAUSE OF CRASH**



NOTE: Incapacitating/Fatal/Other Injury in graphs indicates persons not crashes.  
SOURCE: 2017 CARS data (unofficial at time of report)