

LAFAYETTE COUNTY

District 2 Community Traffic Safety Program



2017 Teen Road User Crash Data Summary

These crashes have been manually reviewed to determine at-fault road user was between the ages of 15 and 19 years old.

4 Crashes • 0 Fatal • 0 Incapacitating • 0 Non-Incapacitating • 1 Possible Injury • 3 PDO*

TOTAL
CRASHES

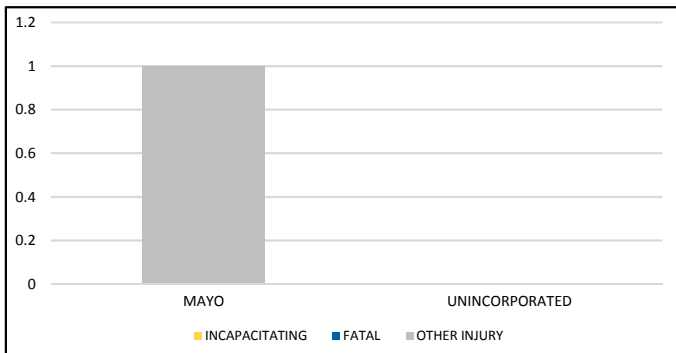
Note: Crash severity is determined from the highest injury type in the crash (i.e. if a crash had both a fatal and an incapacitating, it is determined to be a fatal crash).

*PDO - Property Damage Only

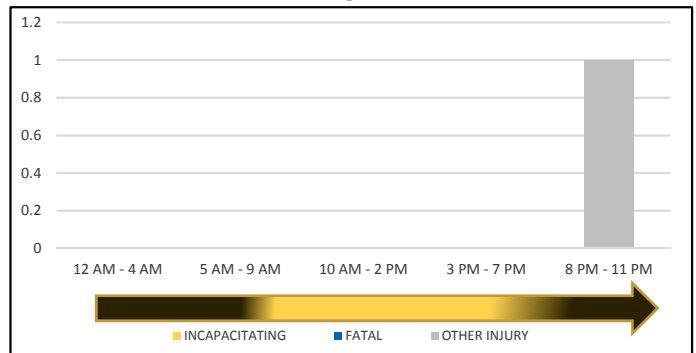
PEOPLE KILLED
OR INJURED

0 Fatalities • 0 Incapacitating Injuries • 1 Other Injuries

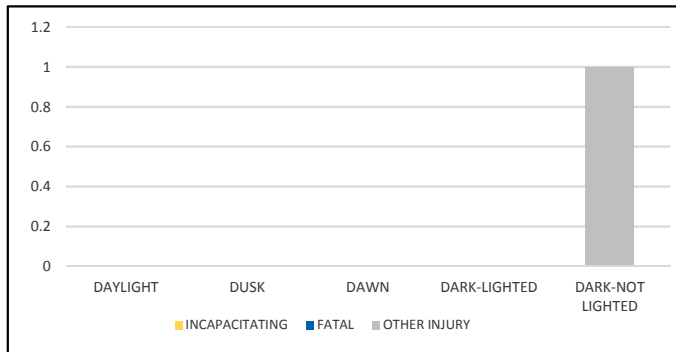
CITY



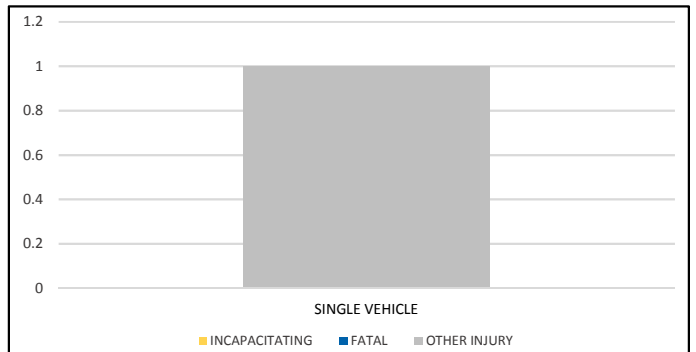
TIME OF DAY



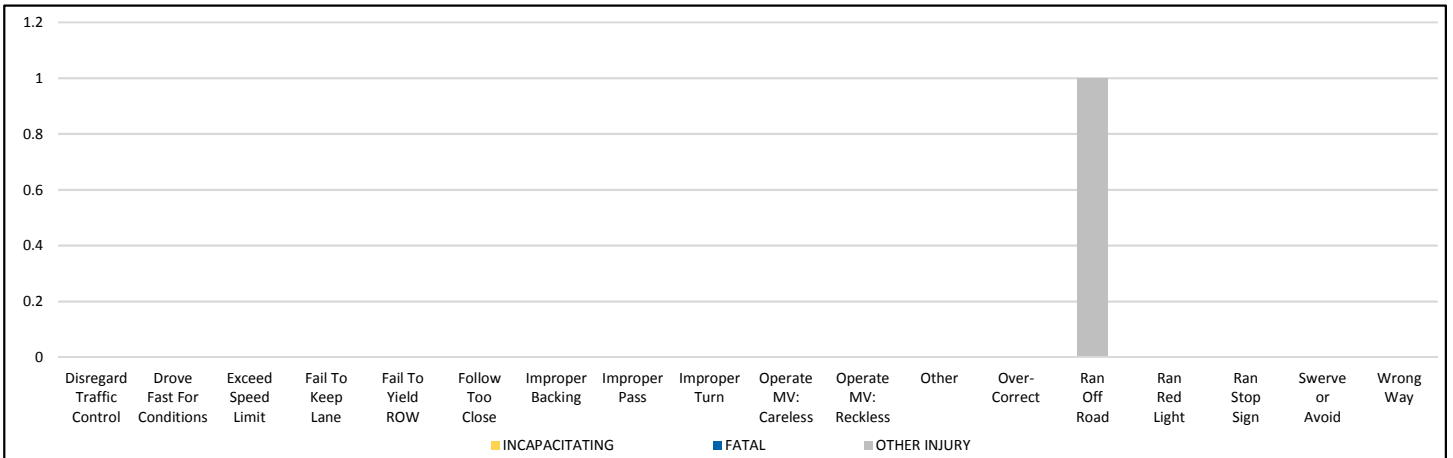
LIGHTING



CRASH TYPE



TEEN ROAD USER CAUSE OF CRASH



NOTE: Incapacitating/Fatal/Other Injury in graphs indicates persons not crashes.

SOURCE: 2017 CARS data (unofficial at time of report)

DATE GENERATED: 8/28/2018