

# LAFAYETTE COUNTY

## District 2 Community Traffic Safety Program



# 2017 Motorcycle Crash Data Summary

2 Crashes • 0 Fatal • 2 Serious Injury • 0 Non-Incapacitating • 0 Possible Injury • 0 PDO\*

**TOTAL  
CRASHES**

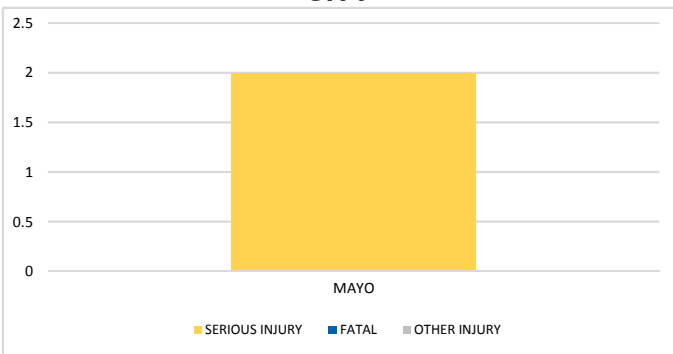
Note: Crash severity is determined from the highest injury type in the crash (i.e. if a crash had both a fatal and a serious it is determined to be a fatal crash).

\*PDO - Property Damage Only

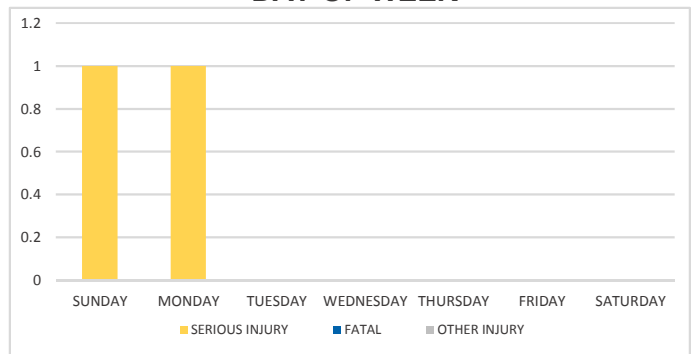
**PEOPLE  
INJURED**

0 Fatalities • 2 Serious Injuries • 0 Other Injuries

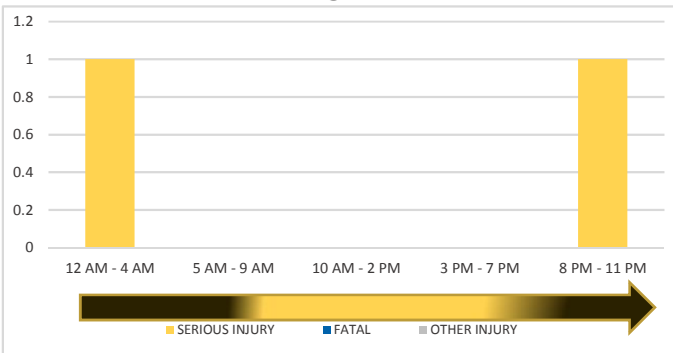
**CITY**



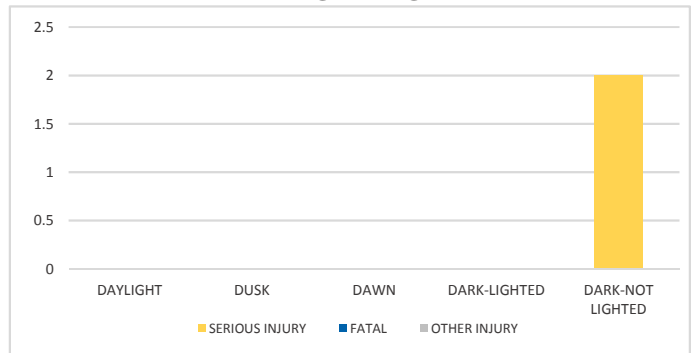
**DAY OF WEEK**



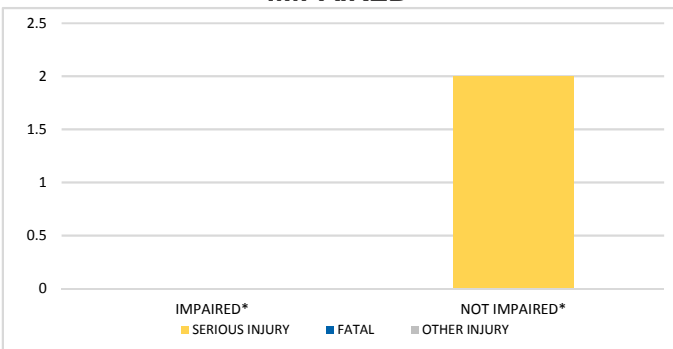
**TIME OF DAY**



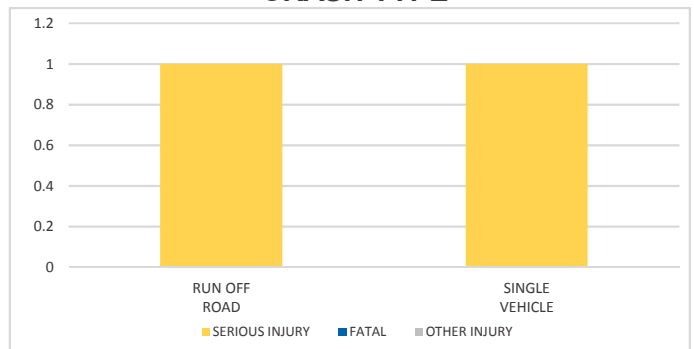
**LIGHTING**



**IMPAIRED**



**CRASH TYPE**



**NOTES:**

Serious/Fatal/Other Injury in graphs indicates persons not crashes.

SOURCES: 2017 CARS data (unofficial at time of report)