

# DUVAL COUNTY

## District 2 Community Traffic Safety Program



### 2017 Bicycle Crash Data Summary

328 Crashes • 4 Fatal • 15 Serious Injury • 102 Non-Incapacitating • 127 Possible Injury • 80 PDO\*

**TOTAL  
CRASHES**

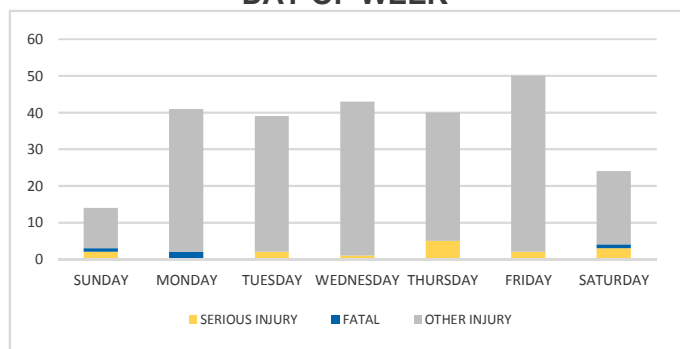
Note: Crash severity is determined from the highest injury type in the crash (i.e. if a crash had both a fatal and a serious it is determined to be a fatal crash).

\*PDO - Property Damage Only

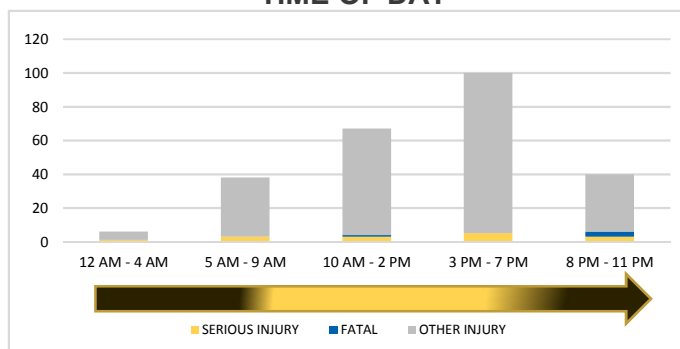
**PEOPLE  
INJURED**

4 Fatalities • 15 Serious Injuries • 232 Other Injuries

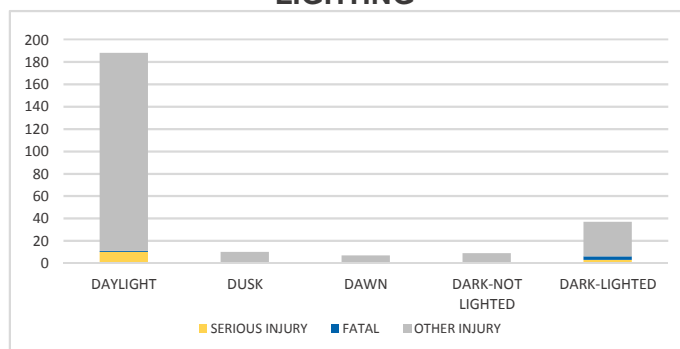
**DAY OF WEEK**



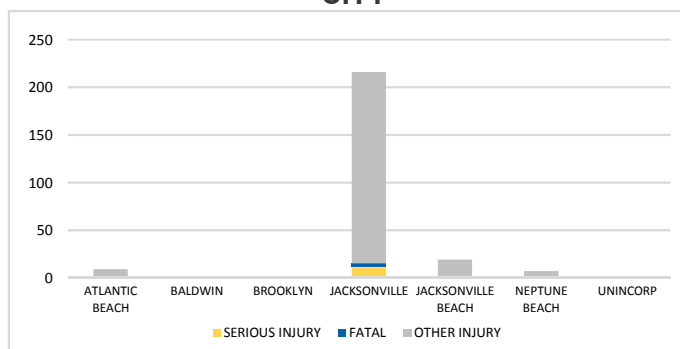
**TIME OF DAY**



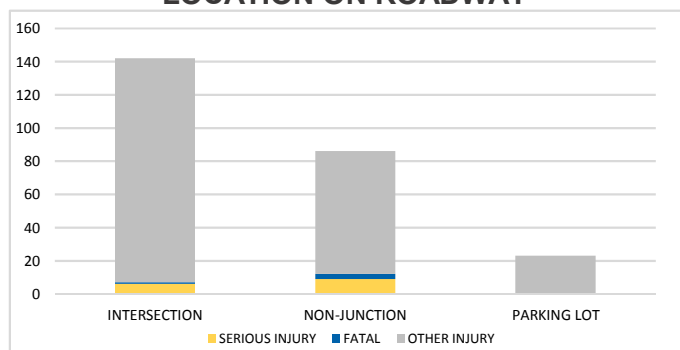
**LIGHTING**



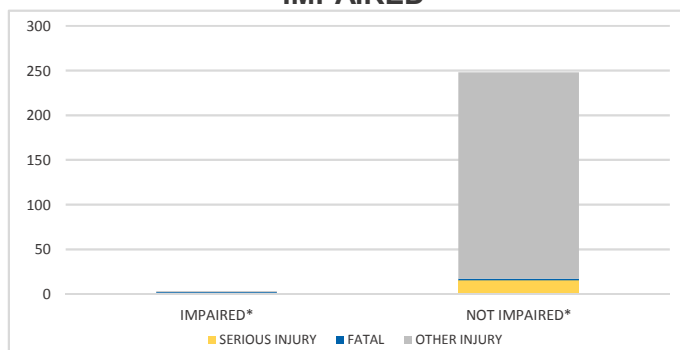
**CITY**



**LOCATION ON ROADWAY**



**IMPAIRED**



\*Involving alcohol and/or drugs by bicyclist and/or driver.

NOTES:  
 Serious/Fatal/Other Injury in graphs indicates persons injured not crashes.  
 SOURCE: 2017 CARS data (unofficial at time of report)

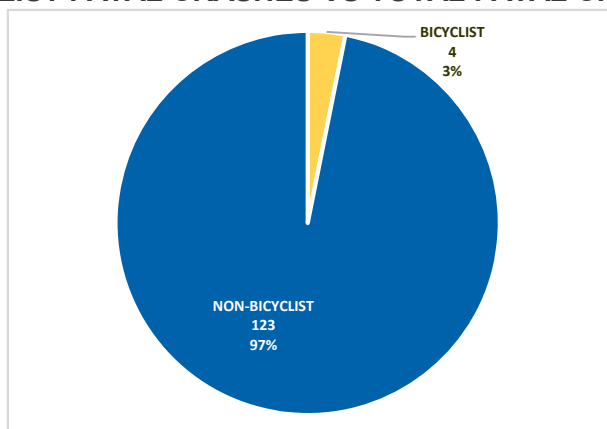
# DUVAL COUNTY

## District 2 Community Traffic Safety Program

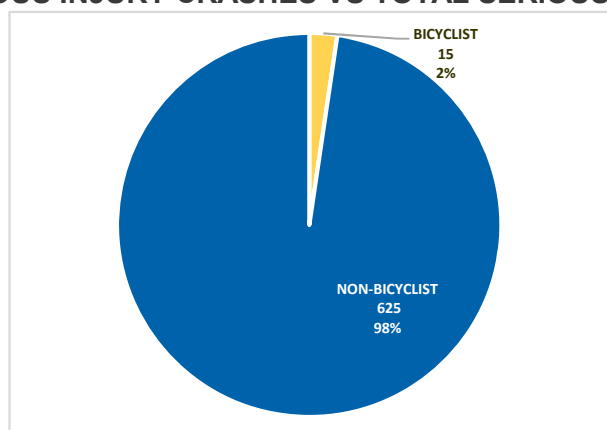


### 2017 Bicycle Crash Data Summary

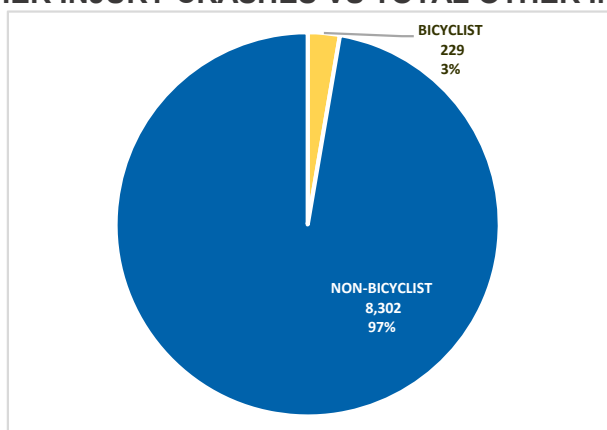
**BICYCLIST FATAL CRASHES VS TOTAL FATAL CRASHES**



**BICYCLIST SERIOUS INJURY CRASHES VS TOTAL SERIOUS INJURY CRASHES**



**BICYCLIST OTHER INJURY CRASHES VS TOTAL OTHER INJURY CRASHES**



NOTES:  
 Serious/Fatal/Other Injury in pie charts indicates crashes not persons injured.  
 SOURCE: 2017 CARS data (unofficial at time of report)