

# DIXIE COUNTY

## District 2 Community Traffic Safety Program



### 2017 Teen Road User Crash Data Summary

These crashes have been manually reviewed to determine at-fault road user was between the ages of 15 and 19 years old.

**10 Crashes • 0 Fatal • 1 Incapacitating • 0 Non-Incapacitating • 2 Possible Injury • 7 PDO\***

**TOTAL  
CRASHES**

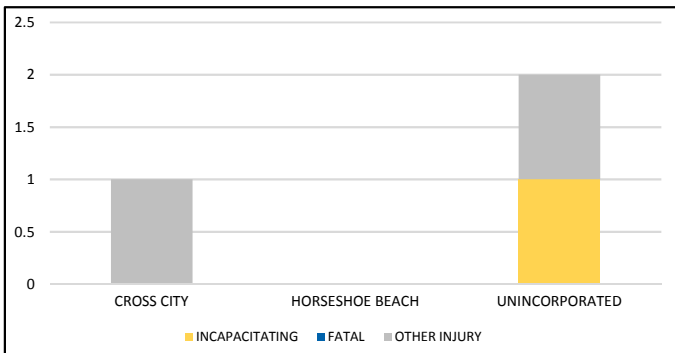
Note: Crash severity is determined from the highest injury type in the crash (i.e. if a crash had both a fatal and an incapacitating, it is determined to be a fatal crash).

\*PDO - Property Damage Only

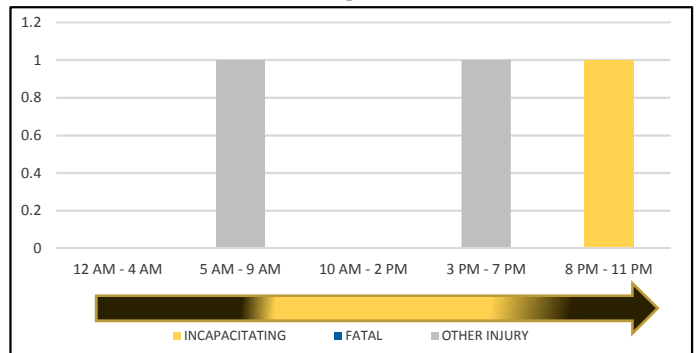
**PEOPLE KILLED  
OR INJURED**

**0 Fatalities • 1 Incapacitating Injury • 2 Other Injuries**

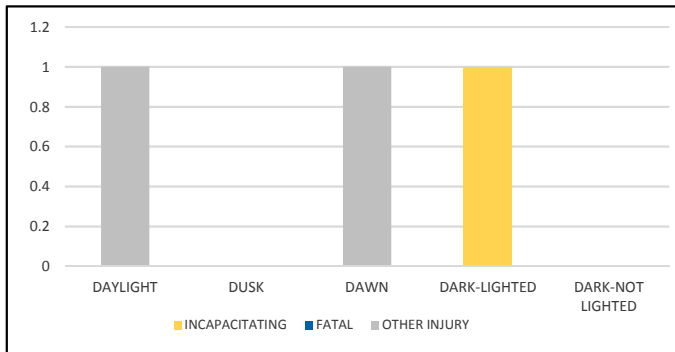
**CITY**



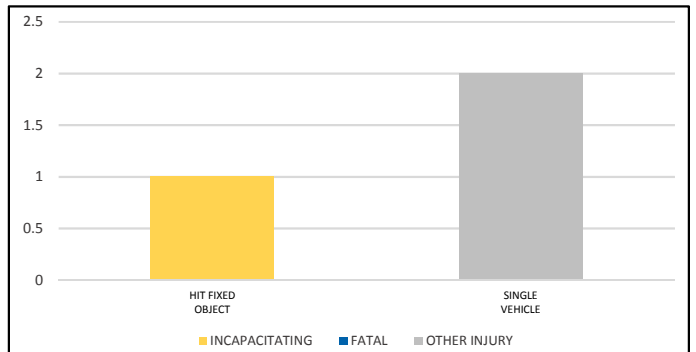
**TIME OF DAY**



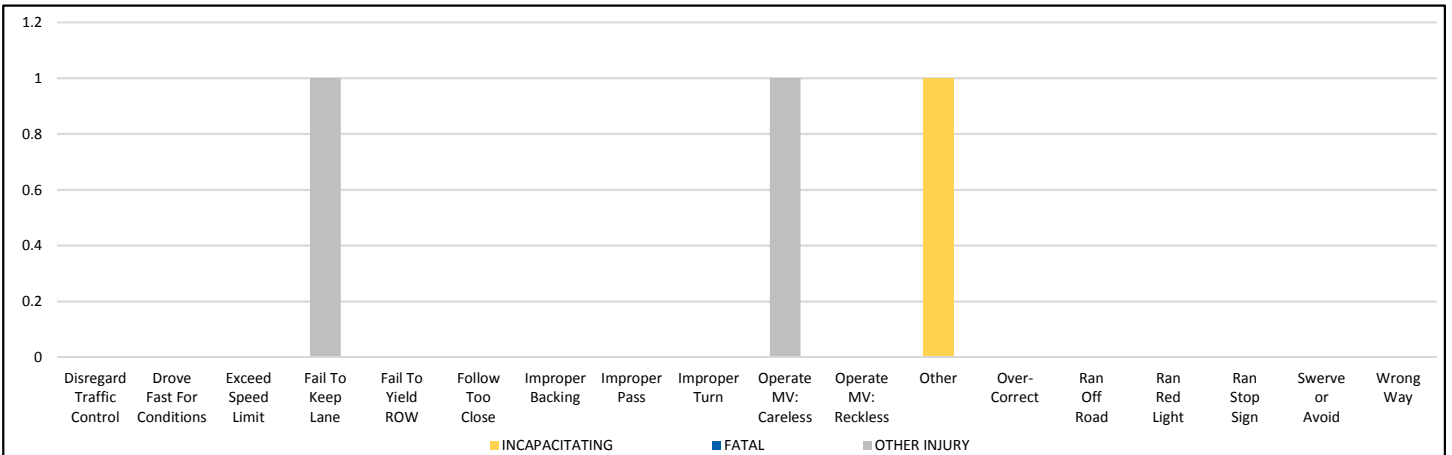
**LIGHTING**



**CRASH TYPE**



**TEEN ROAD USER CAUSE OF CRASH**



NOTE: Incapacitating/Fatal/Other Injury in graphs indicates persons not crashes.

SOURCE: 2017 CARS data (unofficial at time of report)

DATE GENERATED: 8/28/2018