

# DISTRICT 2 DISTRICTWIDE

## District 2 Community Traffic Safety Program



# 2017 Commercial Motor Vehicle Crash Data Summary

**3,983 Crashes • 37 Fatal • 96 Incapacitating • 257 Non-Incapacitating • 387 Possible Injury • 3,206 PDO\***

**TOTAL  
CRASHES**

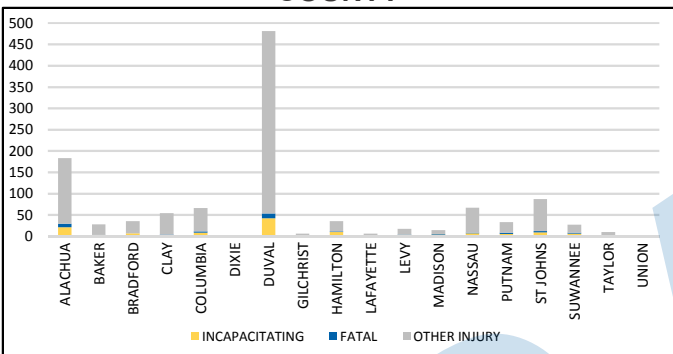
Note: Crash severity is determined from the highest injury type in the crash (i.e. if a crash had both a fatal and a serious it is determined to be a fatal crash).

\*PDO - Property Damage Only

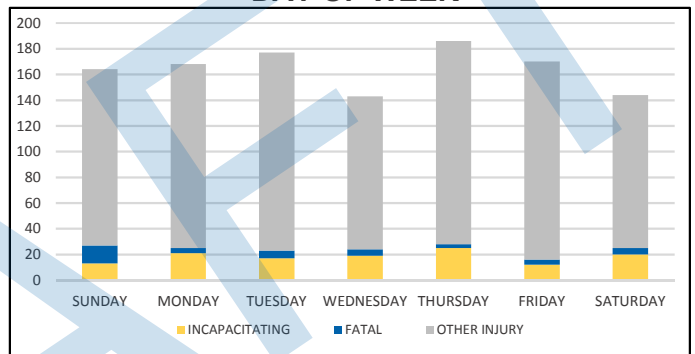
**PEOPLE KILLED  
OR INJURED**

**41 Fatalities • 127 Incapacitating Injuries • 984 Other Injuries**

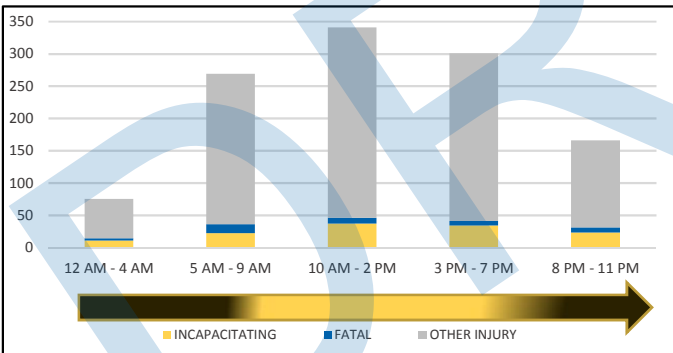
**COUNTY**



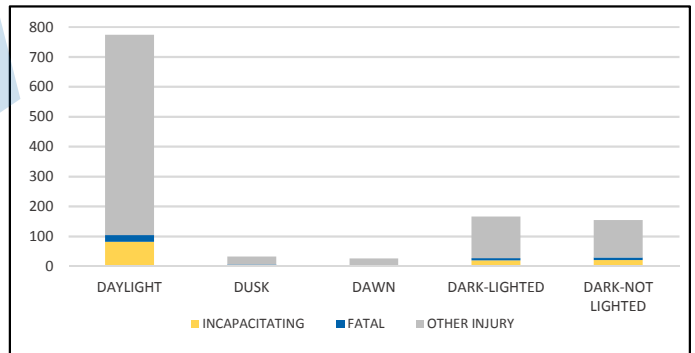
**DAY OF WEEK**



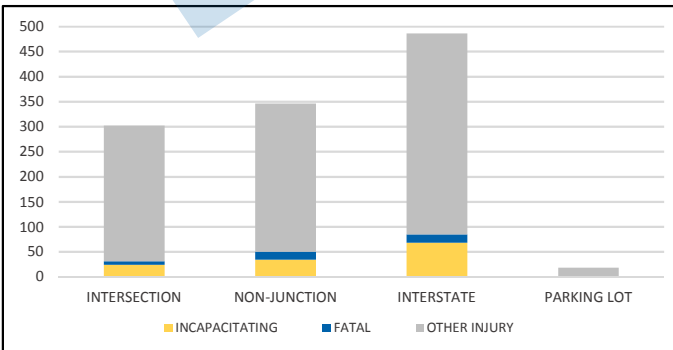
**TIME OF DAY**



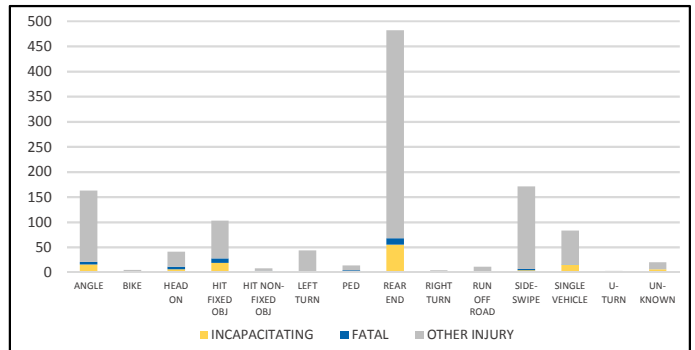
**LIGHTING**



**LOCATION ON ROADWAY**



**CRASH TYPE**



NOTE: Incapacitating/Fatal/Other Injury in graphs indicates persons not crashes.

SOURCE: 2017 CARS data (unofficial at time of report)

DATE GENERATED: 7/12/2018

# ALACHUA COUNTY

## District 2 Community Traffic Safety Program



# 2017 Commercial Motor Vehicle Crash Data Summary

437 Crashes • 4 Fatal • 16 Incapacitating • 44 Non-Incapacitating • 54 Possible Injury • 319 PDO\*

**TOTAL  
CRASHES**

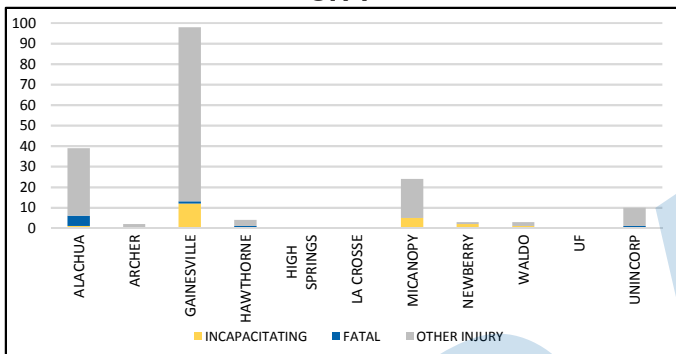
Note: Crash severity is determined from the highest injury type in the crash (i.e. if a crash had both a fatal and a serious it is determined to be a fatal crash).

\*PDO - Property Damage Only

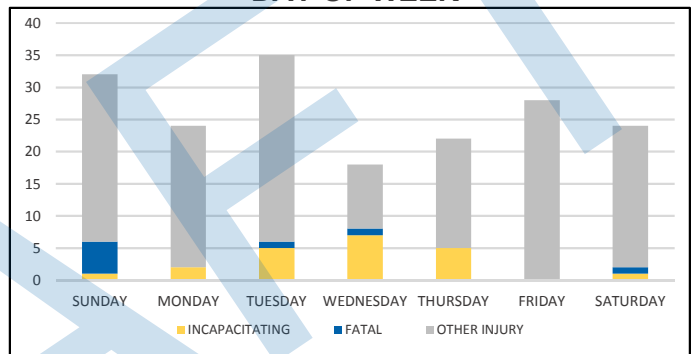
**PEOPLE KILLED  
OR INJURED**

8 Fatalities • 21 Incapacitating Injuries • 154 Other Injuries

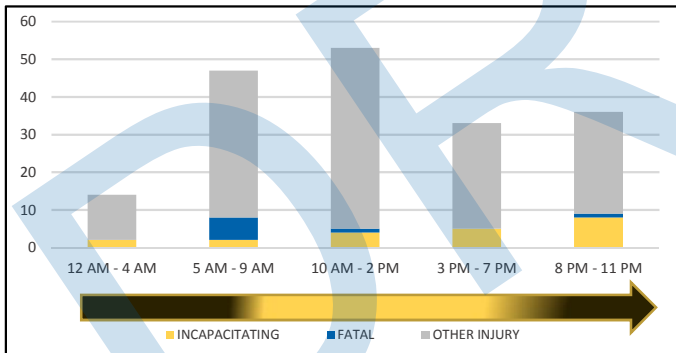
**CITY**



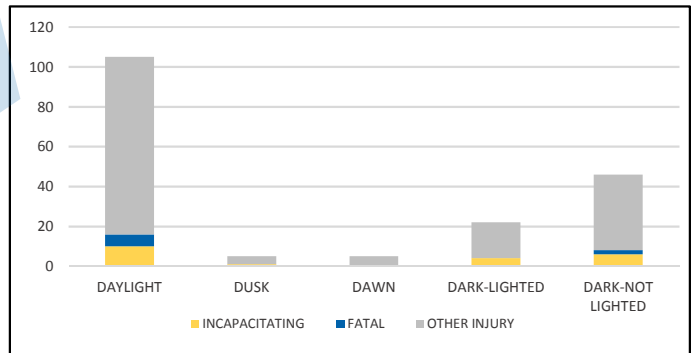
**DAY OF WEEK**



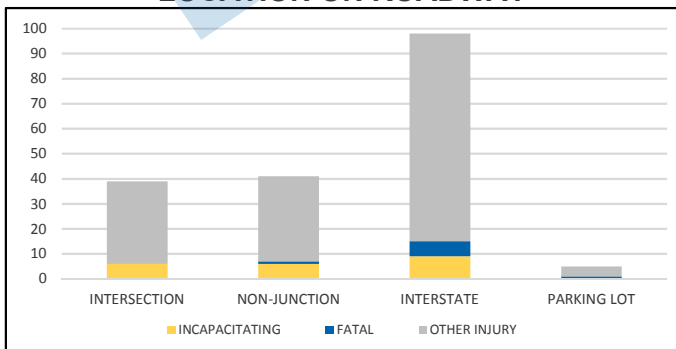
**TIME OF DAY**



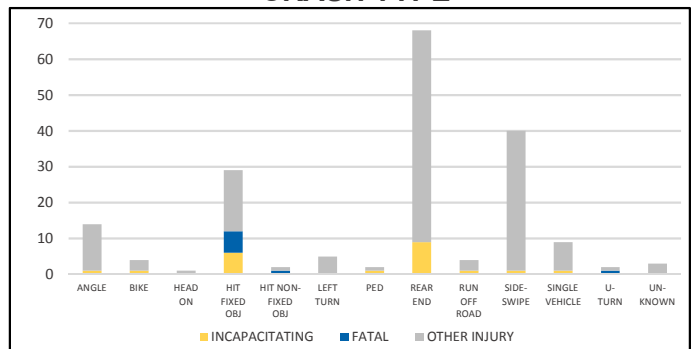
**LIGHTING**



**LOCATION ON ROADWAY**



**CRASH TYPE**



NOTE: Incapacitating/Fatal/Other Injury in graphs indicates persons not crashes.

SOURCE: 2017 CARS data (unofficial at time of report)

DATE GENERATED: 7/11/2018

# BAKER COUNTY

## District 2 Community Traffic Safety Program



### 2017 Commercial Motor Vehicle Crash Data Summary

62 Crashes • 2 Fatal • 1 Incapacitating • 5 Non-Incapacitating • 12 Possible Injury • 42 PDO\*

**TOTAL  
CRASHES**

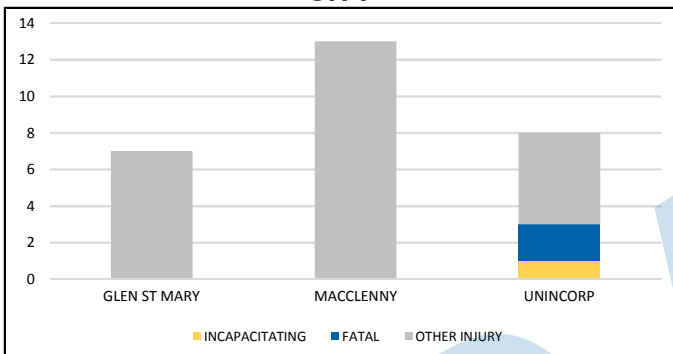
Note: Crash severity is determined from the highest injury type in the crash (i.e. if a crash had both a fatal and a serious it is determined to be a fatal crash).

\*PDO - Property Damage Only

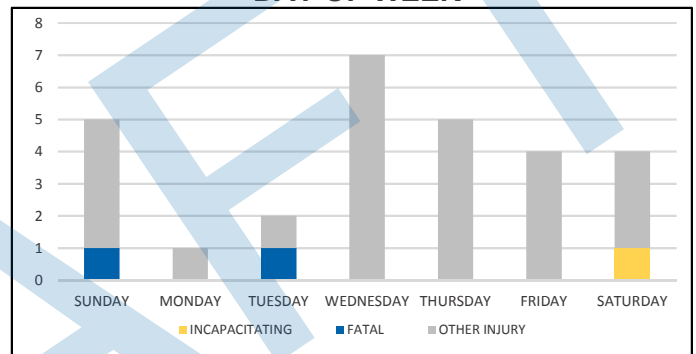
**PEOPLE KILLED  
OR INJURED**

2 Fatalities • 1 Incapacitating Injury • 25 Other Injuries

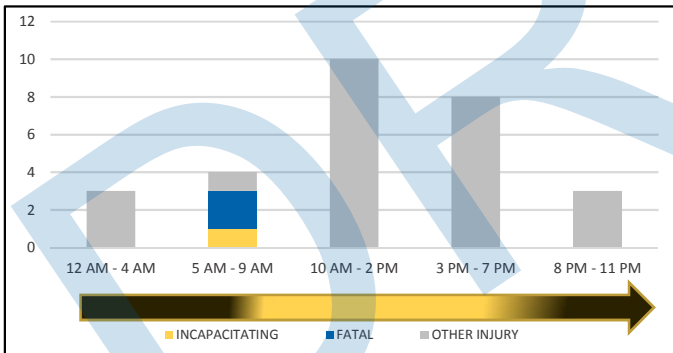
**CITY**



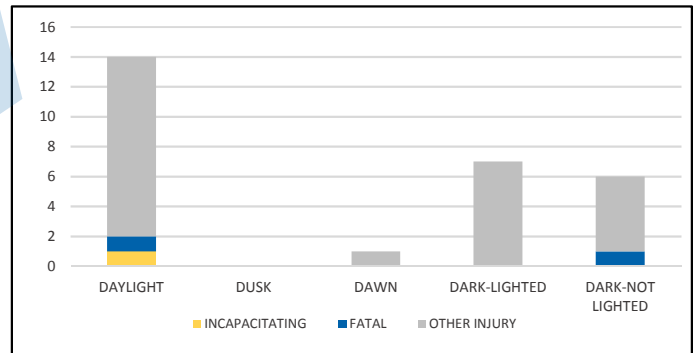
**DAY OF WEEK**



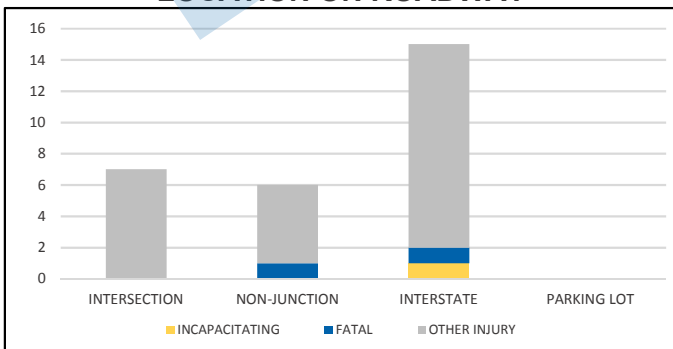
**TIME OF DAY**



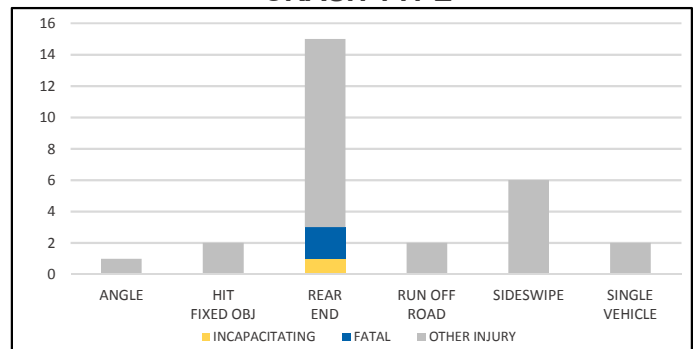
**LIGHTING**



**LOCATION ON ROADWAY**



**CRASH TYPE**



NOTE: Incapacitating/Fatal/Other Injury in graphs indicates persons not crashes.

SOURCE: 2017 CARS data (unofficial at time of report)

DATE GENERATED: 7/12/2018

# BRADFORD COUNTY

## District 2 Community Traffic Safety Program



### 2017 Commercial Motor Vehicle Crash Data Summary

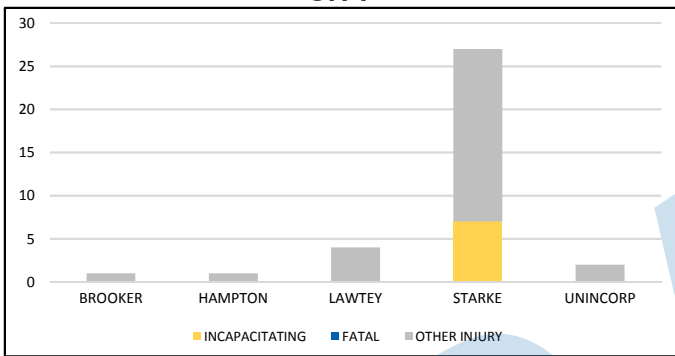
**58 Crashes • 0 Fatal • 3 Incapacitating • 7 Non-Incapacitating • 8 Possible Injury • 40 PDO\*** **TOTAL CRASHES**

Note: Crash severity is determined from the highest injury type in the crash (i.e. if a crash had both a fatal and a serious it is determined to be a fatal crash).

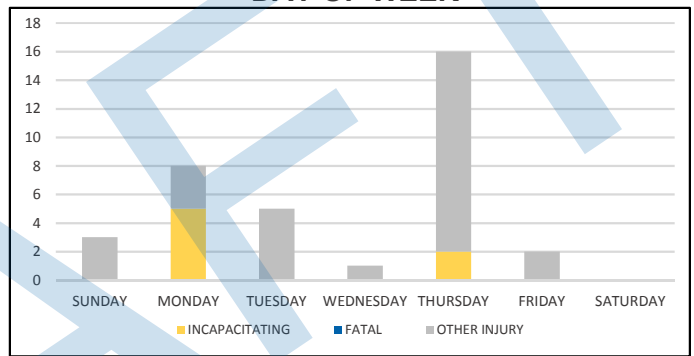
\*PDO - Property Damage Only

**PEOPLE KILLED OR INJURED** **0 Fatalities • 7 Incapacitating Injuries • 28 Other Injuries**

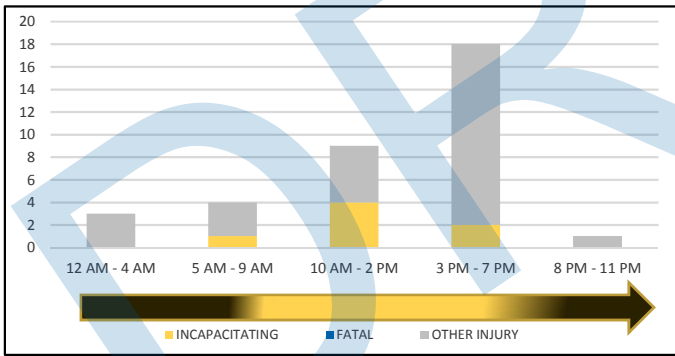
**CITY**



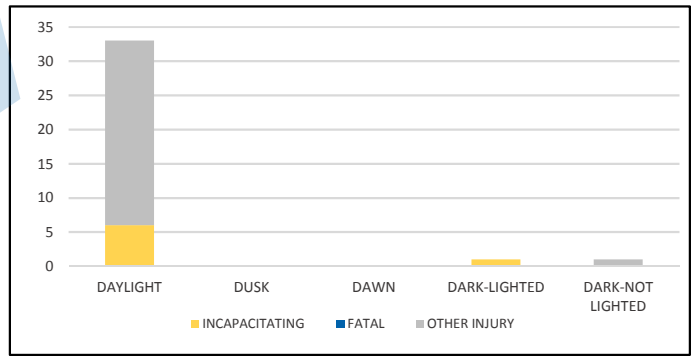
**DAY OF WEEK**



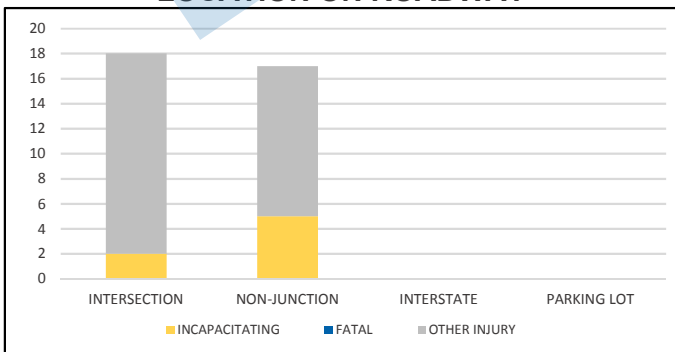
**TIME OF DAY**



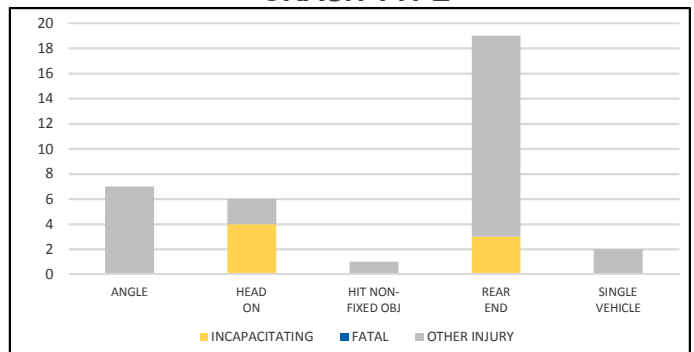
**LIGHTING**



**LOCATION ON ROADWAY**



**CRASH TYPE**



NOTE: Incapacitating/Fatal/Other Injury in graphs indicates persons not crashes.

SOURCE: 2017 CARS data (unofficial at time of report)

DATE GENERATED: 7/12/2018

# CLAY COUNTY

## District 2 Community Traffic Safety Program



# 2017 Commercial Motor Vehicle Crash Data Summary

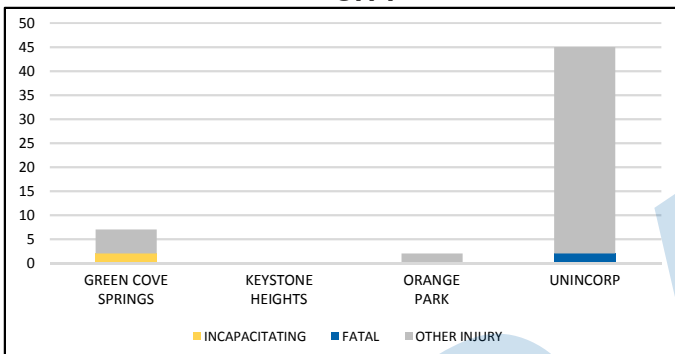
**211 Crashes • 2 Fatal • 2 Incapacitating • 13 Non-Incapacitating • 26 Possible Injury • 168 PDO\*** **TOTAL CRASHES**

Note: Crash severity is determined from the highest injury type in the crash (i.e. if a crash had both a fatal and a serious it is determined to be a fatal crash).

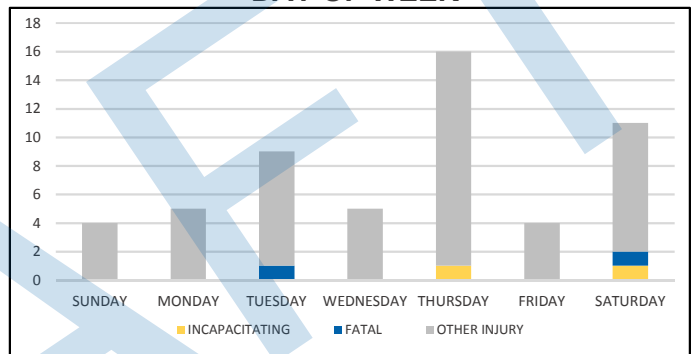
\*PDO - Property Damage Only

**PEOPLE KILLED OR INJURED** **2 Fatalities • 2 Incapacitating Injuries • 50 Other Injuries**

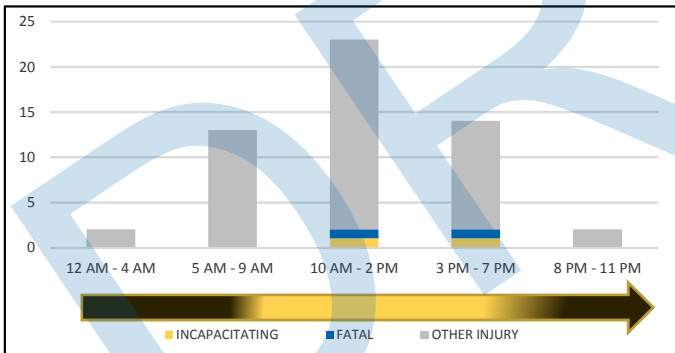
**CITY**



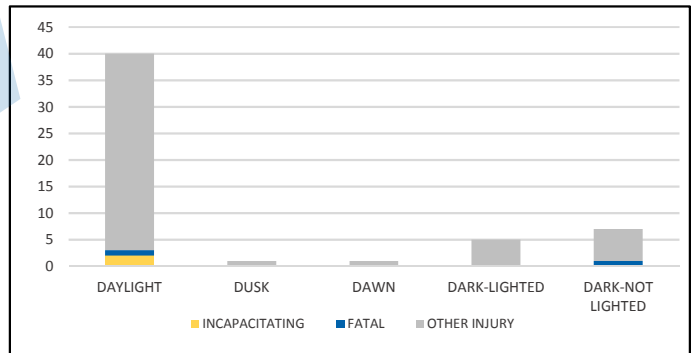
**DAY OF WEEK**



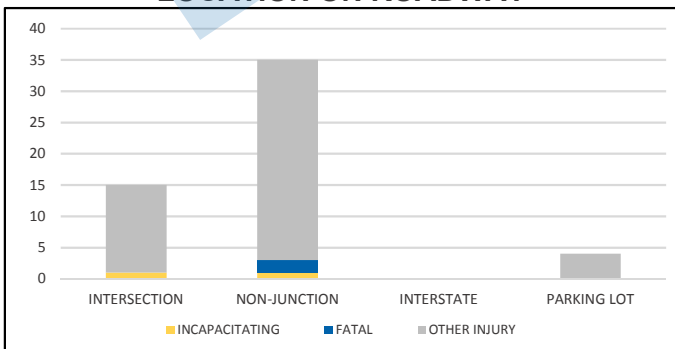
**TIME OF DAY**



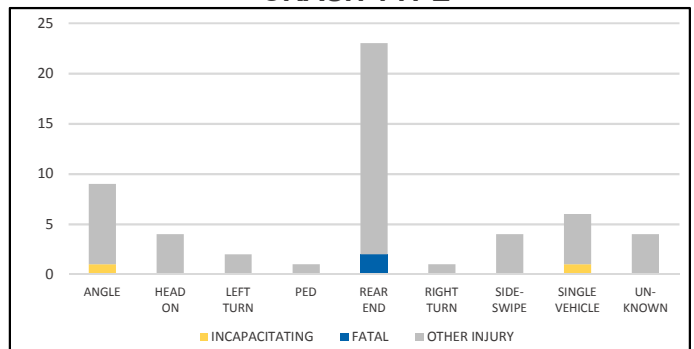
**LIGHTING**



**LOCATION ON ROADWAY**



**CRASH TYPE**



NOTE: Incapacitating/Fatal/Other Injury in graphs indicates persons not crashes.

SOURCE: 2017 CARS data (unofficial at time of report)

DATE GENERATED: 7/12/2018

# COLUMBIA COUNTY

## District 2 Community Traffic Safety Program



### 2017 Commercial Motor Vehicle Crash Data Summary

195 Crashes • 3 Fatal • 8 Incapacitating • 12 Non-Incapacitating • 21 Possible Injury • 151

TOTAL  
CRASHES

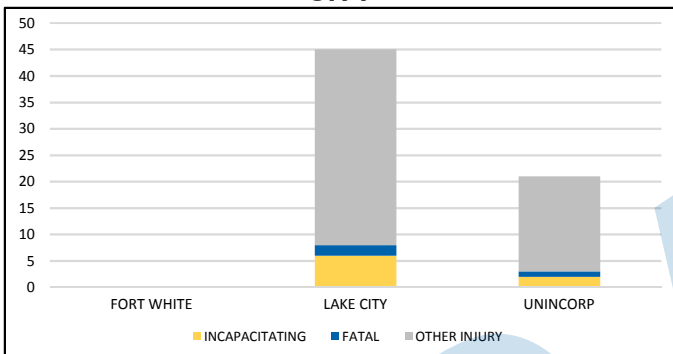
Note: Crash severity is determined from the highest injury type in the crash (i.e. if a crash had both a fatal and a serious it is determined to be a fatal crash).

\*PDO - Property Damage Only

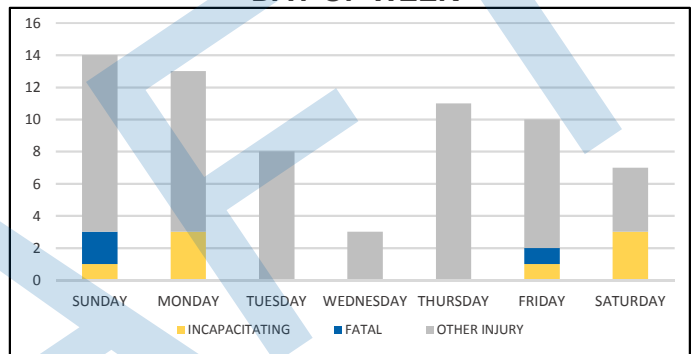
PEOPLE KILLED  
OR INJURED

3 Fatalities • 8 Incapacitating Injuries • 55 Other Injuries

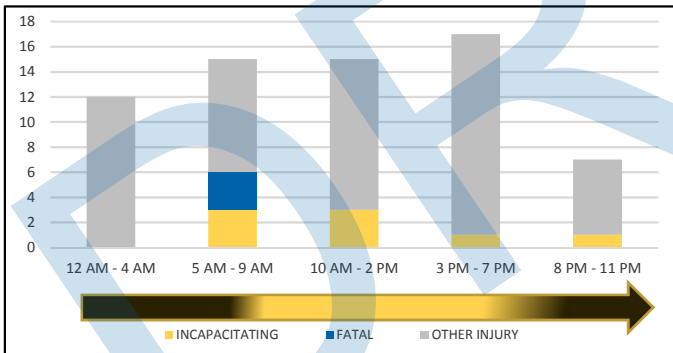
CITY



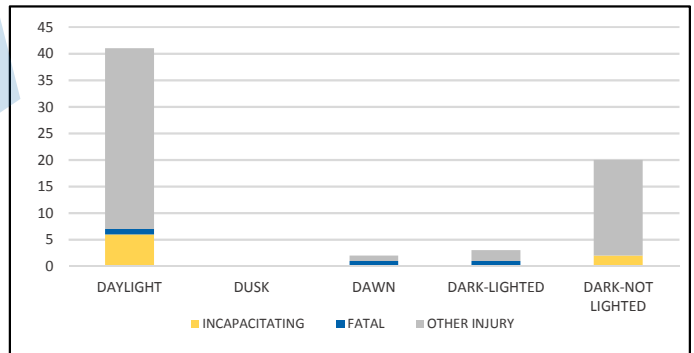
DAY OF WEEK



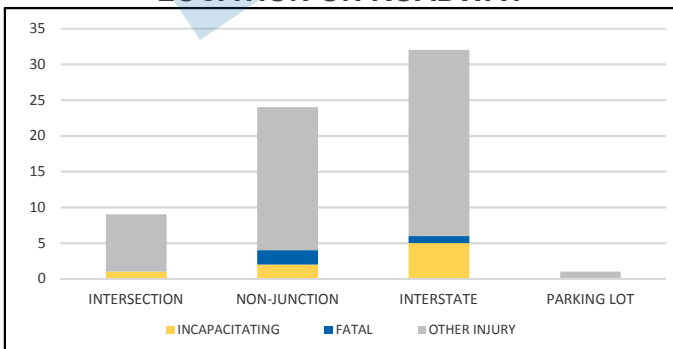
TIME OF DAY



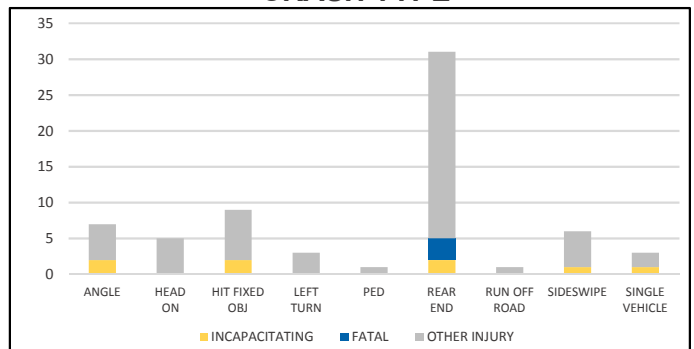
LIGHTING



LOCATION ON ROADWAY



CRASH TYPE



NOTE: Incapacitating/Fatal/Other Injury in graphs indicates persons not crashes.

SOURCE: 2017 CARS data (unofficial at time of report)

DATE GENERATED: 7/12/2018

# DIXIE COUNTY

## District 2 Community Traffic Safety Program



### 2017 Commercial Motor Vehicle Crash Data Summary

**6 Crashes • 0 Fatal • 1 Incapacitating • 0 Non-Incapacitating • 0 Possible Injury • 5 PDO\*** **TOTAL CRASHES**

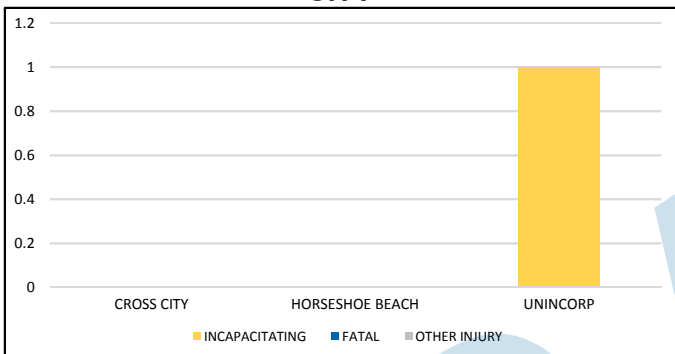
Note: Crash severity is determined from the highest injury type in the crash (i.e. if a crash had both a fatal and a serious it is determined to be a fatal crash).

\*PDO - Property Damage Only

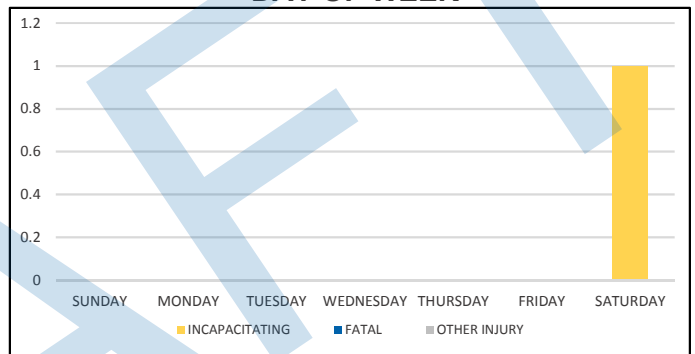
**PEOPLE KILLED OR INJURED**

**0 Fatalities • 1 Incapacitating Injury • 0 Other Injuries**

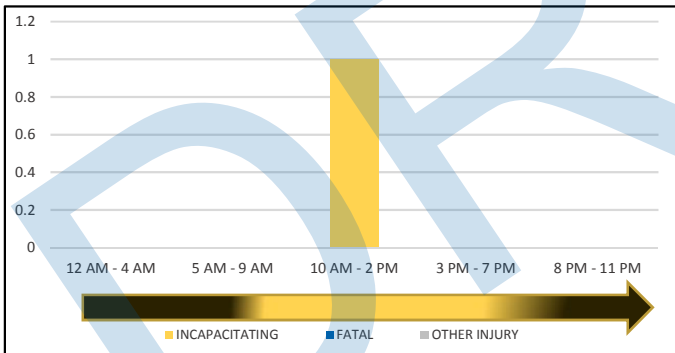
**CITY**



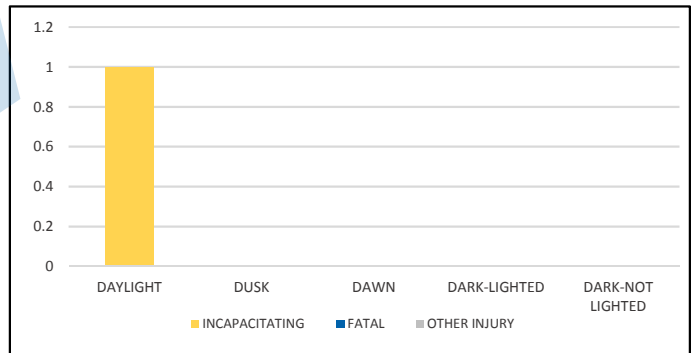
**DAY OF WEEK**



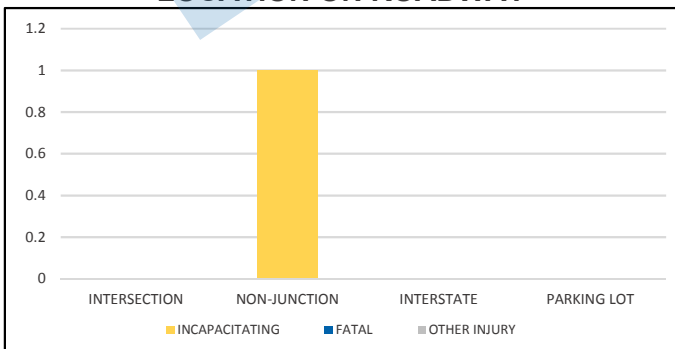
**TIME OF DAY**



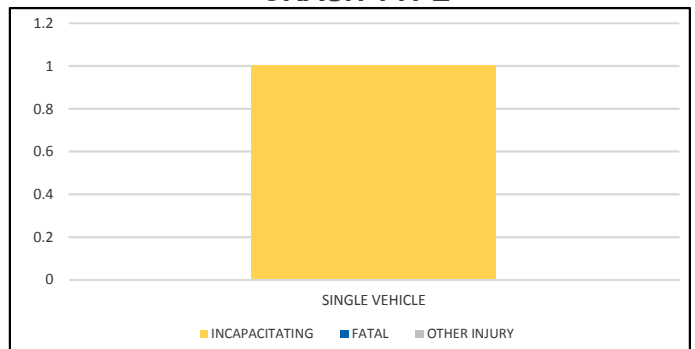
**LIGHTING**



**LOCATION ON ROADWAY**



**CRASH TYPE**



NOTE: Incapacitating/Fatal/Other Injury in graphs indicates persons not crashes.

SOURCE: 2017 CARS data (unofficial at time of report)

DATE GENERATED: 7/12/2018

# DUVAL COUNTY

## District 2 Community Traffic Safety Program



# 2017 Commercial Motor Vehicle Crash Data Summary

2,092 Crashes • 11 Fatal • 31 Incapacitating • 105 Non-Incapacitating • 188 Possible Injury • 1,757 PDO\*

**TOTAL  
CRASHES**

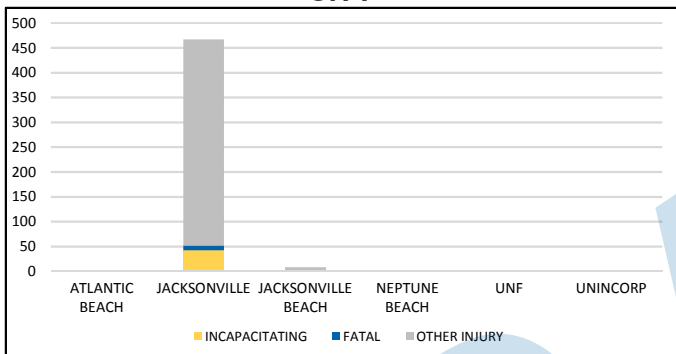
Note: Crash severity is determined from the highest injury type in the crash (i.e. if a crash had both a fatal and a serious it is determined to be a fatal crash).

\*PDO - Property Damage Only

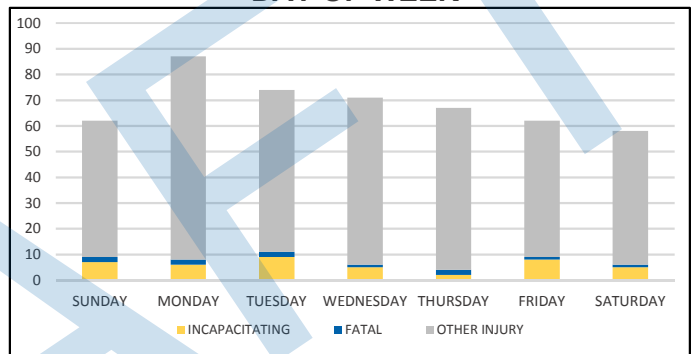
**PEOPLE KILLED  
OR INJURED**

**11 Fatalities • 42 Incapacitating Injuries • 428 Other Injuries**

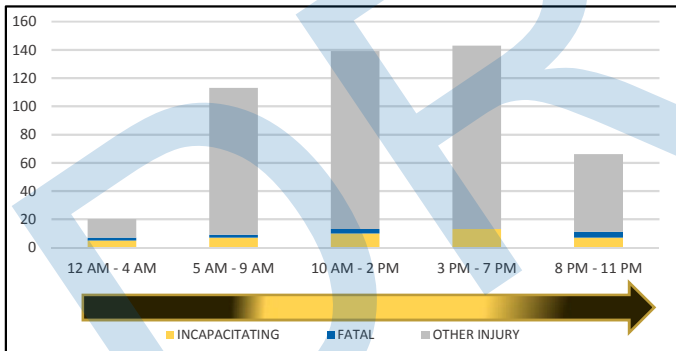
**CITY**



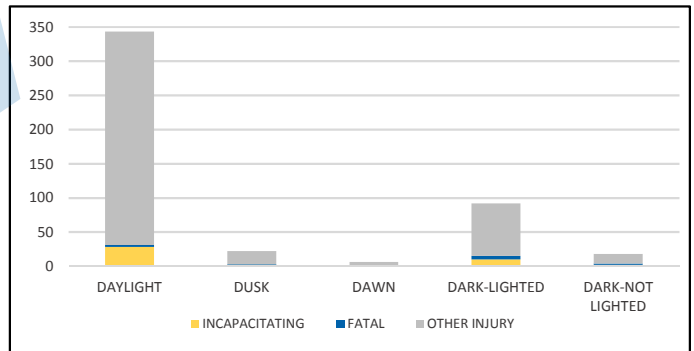
**DAY OF WEEK**



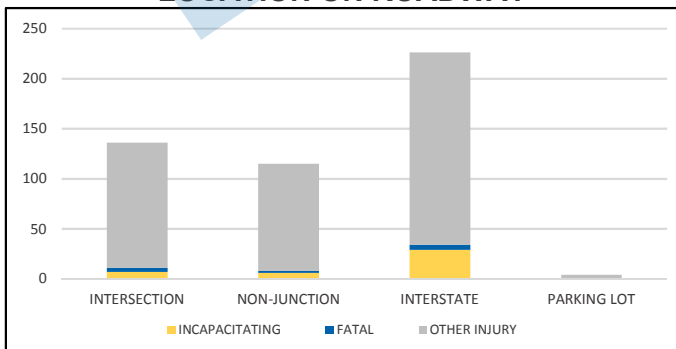
**TIME OF DAY**



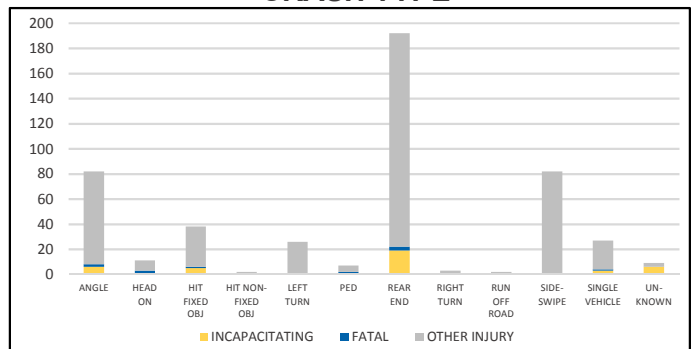
**LIGHTING**



**LOCATION ON ROADWAY**



**CRASH TYPE**



NOTE: Incapacitating/Fatal/Other Injury in graphs indicates persons not crashes.

SOURCE: 2017 CARS data (unofficial at time of report)

DATE GENERATED: 7/12/2018



# GILCHRIST COUNTY

## District 2 Community Traffic Safety Program



### 2017 Commercial Motor Vehicle Crash Data Summary

10 Crashes • 0 Fatal • 0 Incapacitating • 2 Non-Incapacitating • 1 Possible Injury • 7 PDO\*

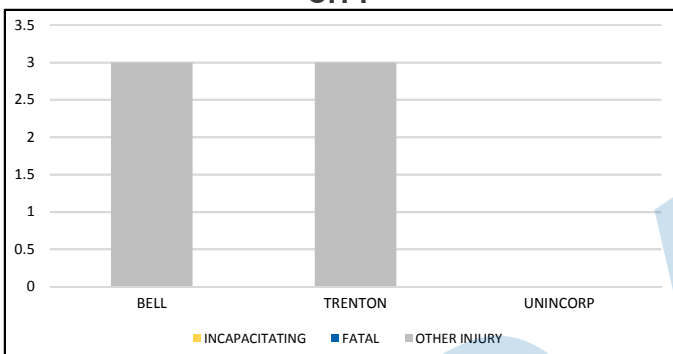
TOTAL  
CRASHES

Note: Crash severity is determined from the highest injury type in the crash (i.e. if a crash had both a fatal and a serious it is determined to be a fatal crash).  
\*PDO - Property Damage Only

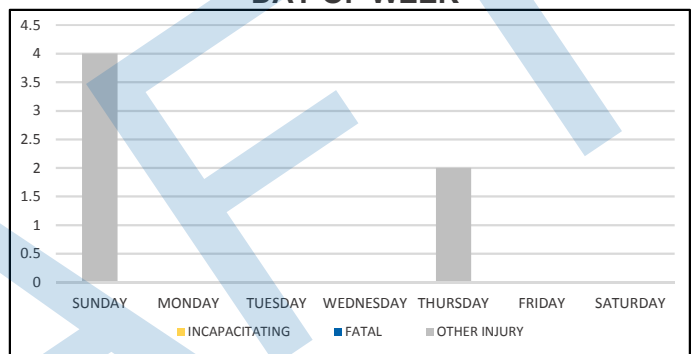
PEOPLE KILLED  
OR INJURED

0 Fatalities • 0 Incapacitating Injuries • 6 Other Injuries

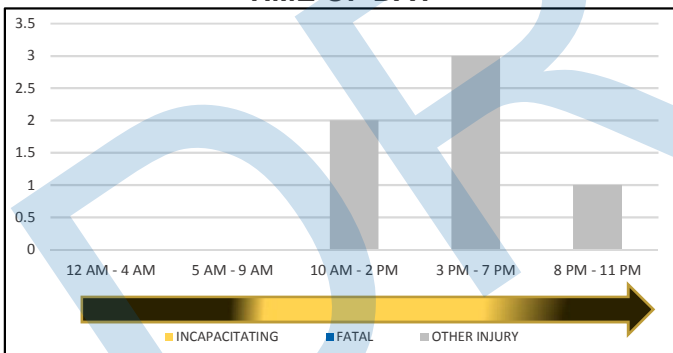
CITY



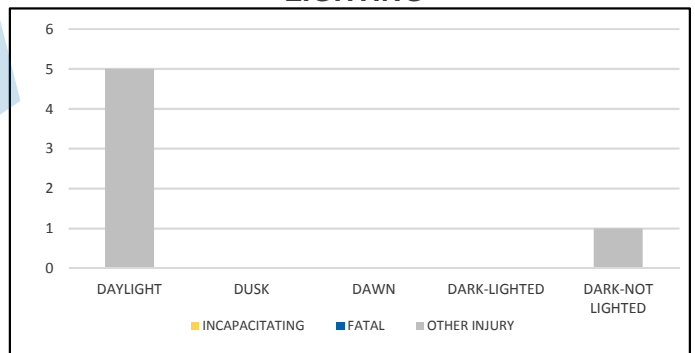
DAY OF WEEK



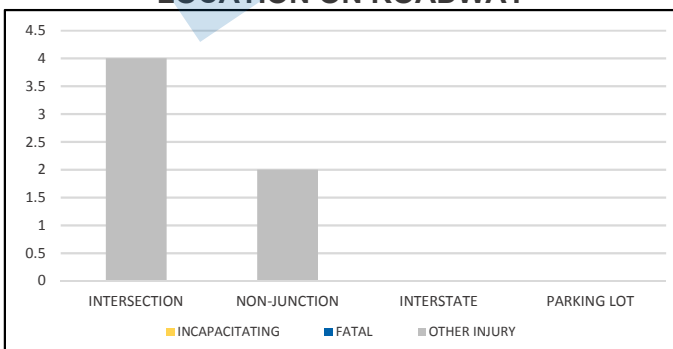
TIME OF DAY



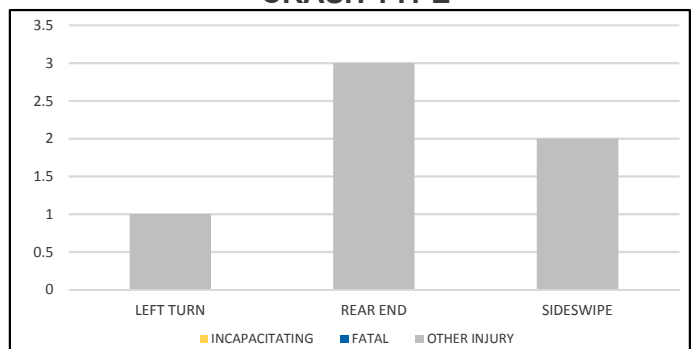
LIGHTING



LOCATION ON ROADWAY



CRASH TYPE



NOTE: Incapacitating/Fatal/Other Injury in graphs indicates persons not crashes.

SOURCE: 2017 CARS data (unofficial at time of report)

DATE GENERATED: 7/12/2018

# HAMILTON COUNTY

## District 2 Community Traffic Safety Program



### 2017 Commercial Motor Vehicle Crash Data Summary

94 Crashes • 1 Fatal • 7 Incapacitating • 6 Non-Incapacitating • 7 Possible Injury • 73 PDO\*

TOTAL  
CRASHES

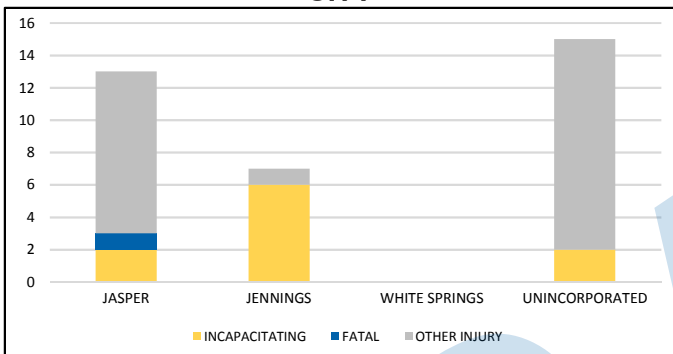
Note: Crash severity is determined from the highest injury type in the crash (i.e. if a crash had both a fatal and a serious it is determined to be a fatal crash).

\*PDO - Property Damage Only

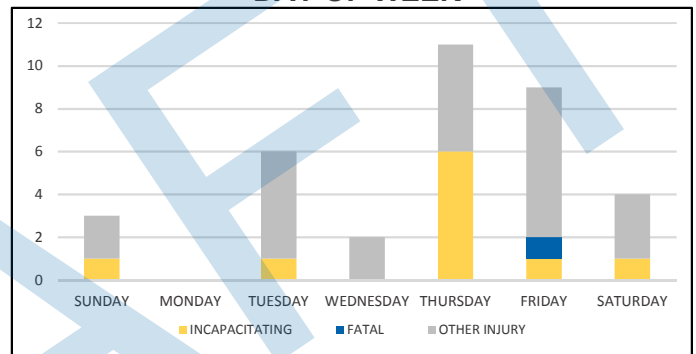
PEOPLE KILLED  
OR INJURED

1 Fatality • 10 Incapacitating Injuries • 24 Other Injuries

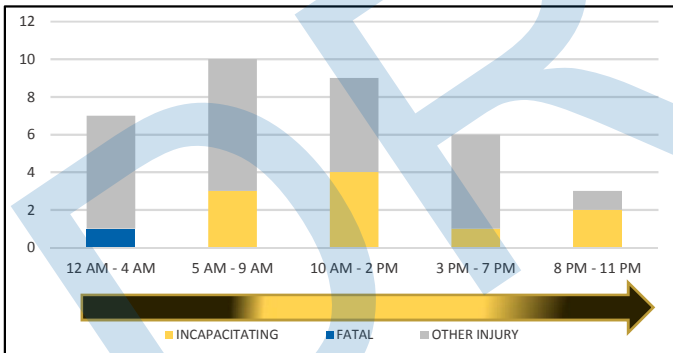
CITY



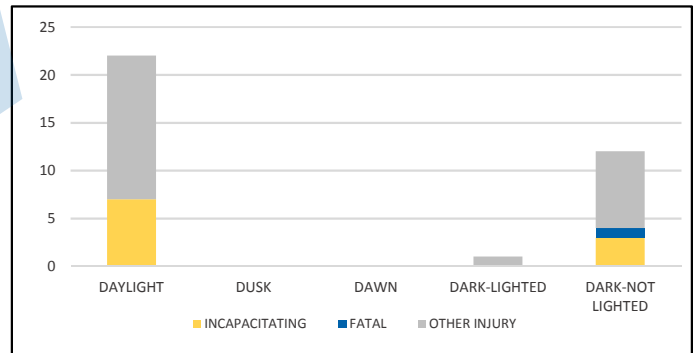
DAY OF WEEK



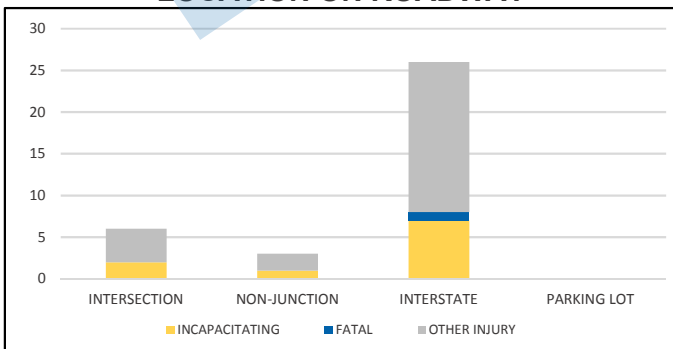
TIME OF DAY



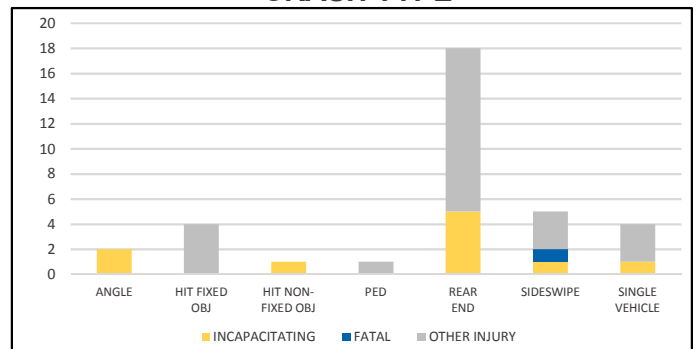
LIGHTING



LOCATION ON ROADWAY



CRASH TYPE



NOTE: Incapacitating/Fatal/Other Injury in graphs indicates persons not crashes.

SOURCE: 2017 CARS data (unofficial at time of report)

DATE GENERATED: 7/12/2018

# LAFAYETTE COUNTY

## District 2 Community Traffic Safety Program



### 2017 Commercial Motor Vehicle Crash Data Summary

4 Crashes • 1 Fatal • 0 Incapacitating • 2 Non-Incapacitating • 1 Possible Injury • 0 PDO\*

TOTAL CRASHES

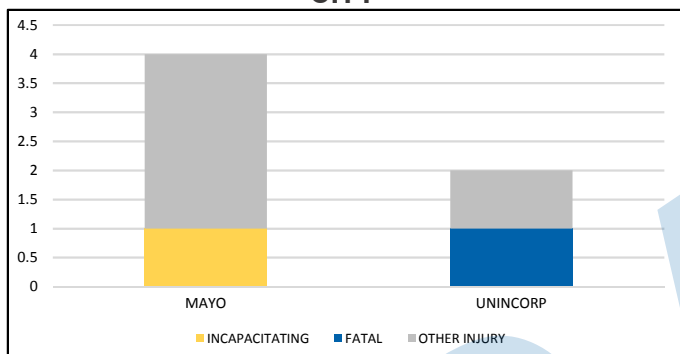
Note: Crash severity is determined from the highest injury type in the crash (i.e. if a crash had both a fatal and a serious it is determined to be a fatal crash).

\*PDO - Property Damage Only

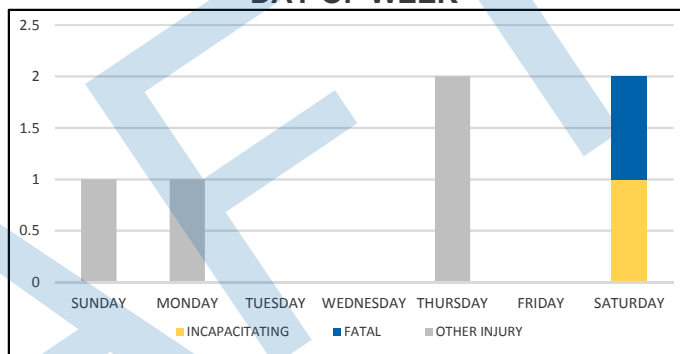
PEOPLE KILLED OR INJURED

1 Fatality • 1 Incapacitating Injury • 4 Other Injuries

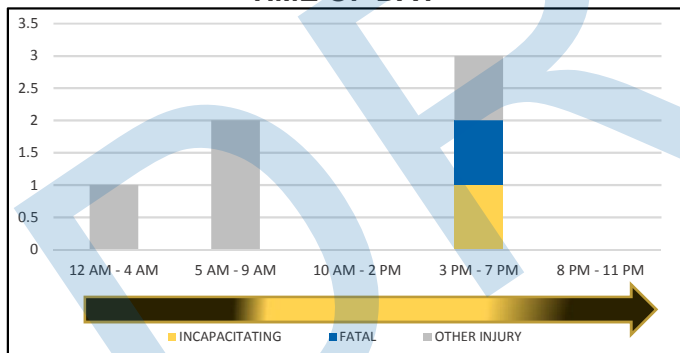
CITY



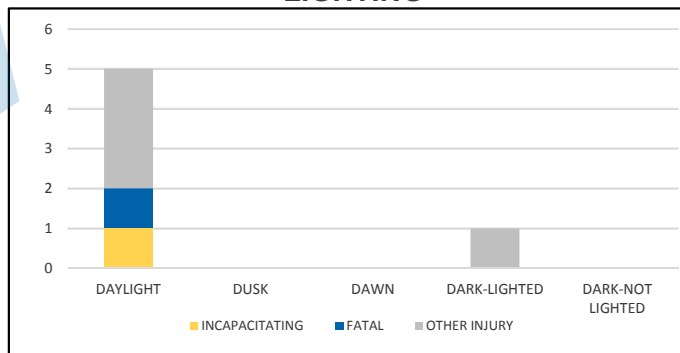
DAY OF WEEK



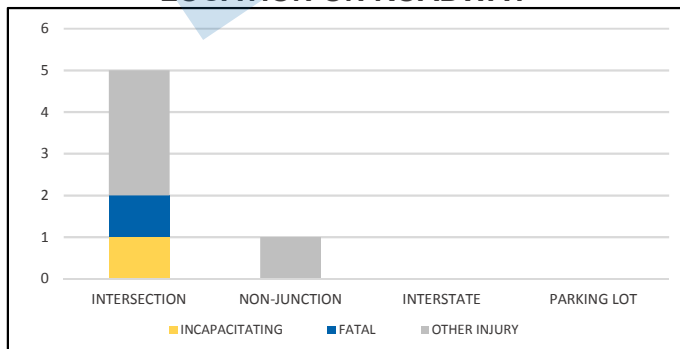
TIME OF DAY



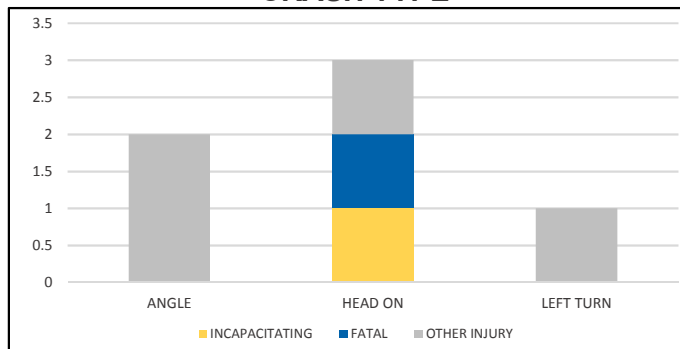
LIGHTING



LOCATION ON ROADWAY



CRASH TYPE



NOTE: Incapacitating/Fatal/Other Injury in graphs indicates persons not crashes.

SOURCE: 2017 CARS data (unofficial at time of report)

DATE GENERATED: 7/12/2018

# LEVY COUNTY

## District 2 Community Traffic Safety Program



# 2017 Commercial Motor Vehicle Crash Data Summary

28 Crashes • 1 Fatal • 1 Incapacitating • 4 Non-Incapacitating • 4 Possible Injury • 18 PDO\*

TOTAL  
CRASHES

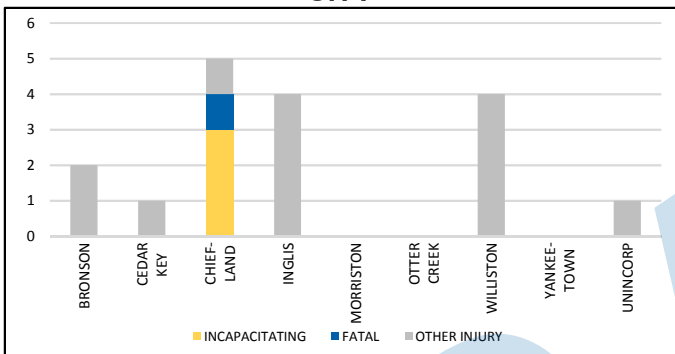
Note: Crash severity is determined from the highest injury type in the crash (i.e. if a crash had both a fatal and a serious it is determined to be a fatal crash).

\*PDO - Property Damage Only

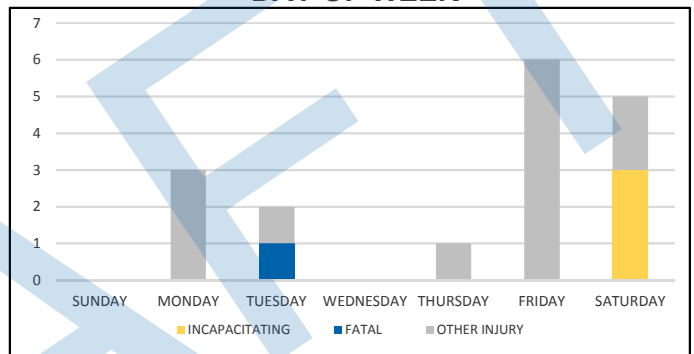
PEOPLE KILLED  
OR INJURED

1 Fatality • 3 Incapacitating Injuries • 13 Other Injuries

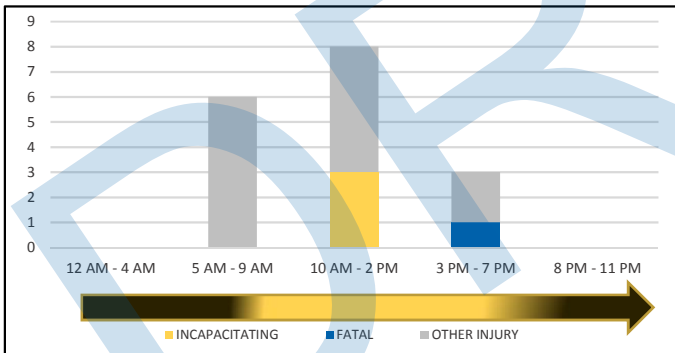
CITY



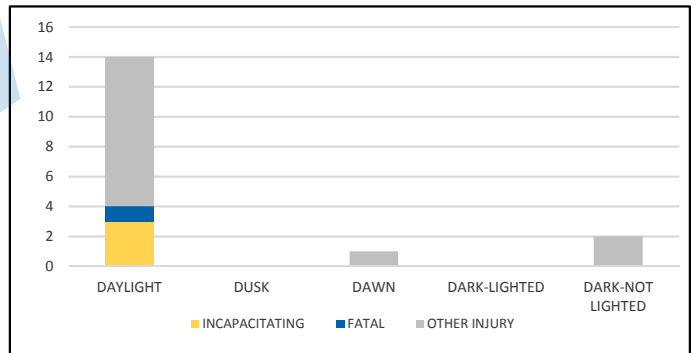
DAY OF WEEK



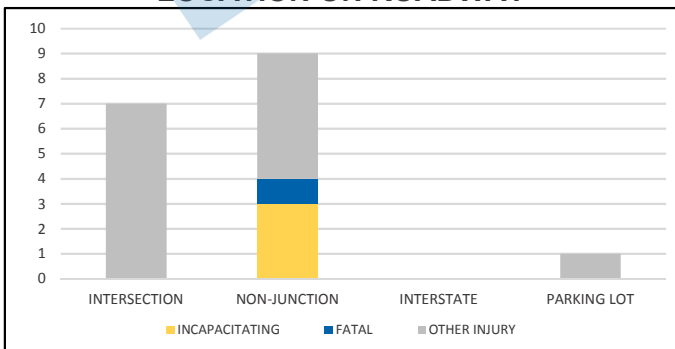
TIME OF DAY



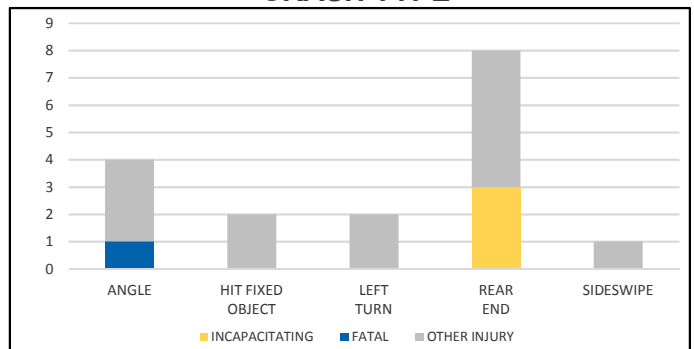
LIGHTING



LOCATION ON ROADWAY



CRASH TYPE



NOTE: Incapacitating/Fatal/Other Injury in graphs indicates persons not crashes.

SOURCE: 2017 CARS data (unofficial at time of report)

DATE GENERATED: 7/12/2018

# MADISON COUNTY

## District 2 Community Traffic Safety Program



### 2017 Commercial Motor Vehicle Crash Data Summary

58 Crashes • 1 Fatal • 3 Incapacitating • 3 Non-Incapacitating • 3 Possible Injury • 48 PDO\*

TOTAL  
CRASHES

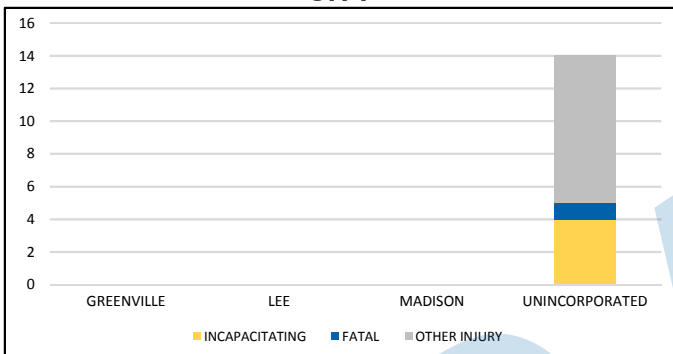
Note: Crash severity is determined from the highest injury type in the crash (i.e. if a crash had both a fatal and a serious it is determined to be a fatal crash).

\*PDO - Property Damage Only

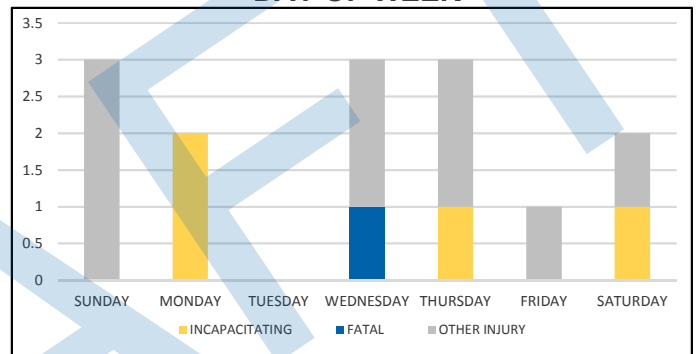
PEOPLE KILLED  
OR INJURED

1 Fatality • 4 Incapacitating Injuries • 9 Other Injuries

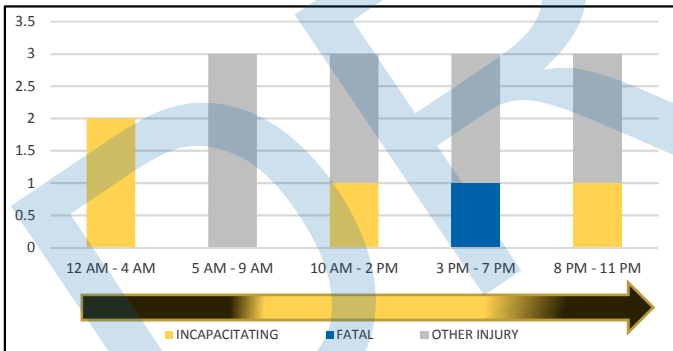
CITY



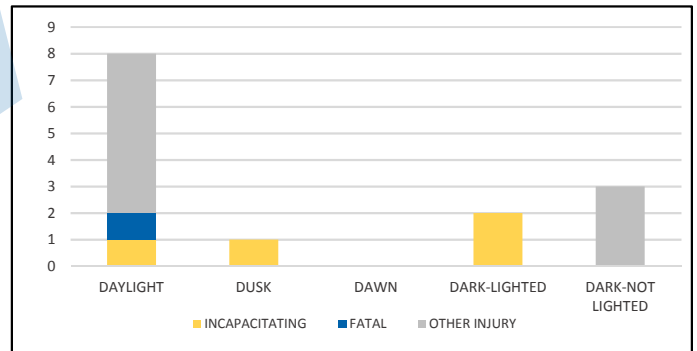
DAY OF WEEK



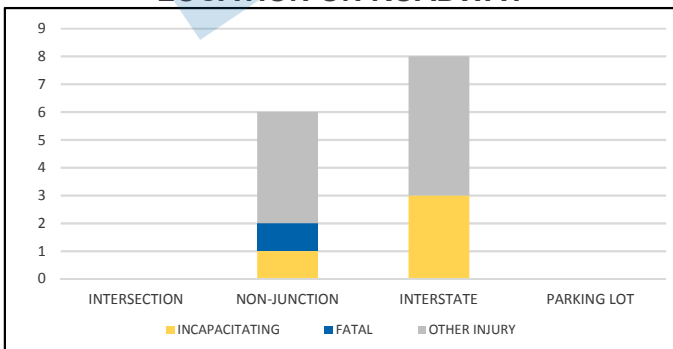
TIME OF DAY



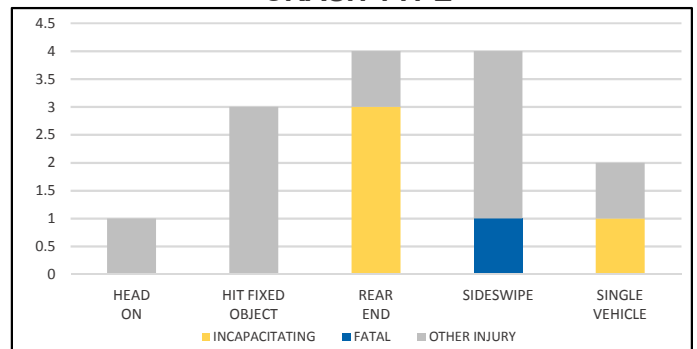
LIGHTING



LOCATION ON ROADWAY



CRASH TYPE



NOTE: Incapacitating/Fatal/Other Injury in graphs indicates persons not crashes.

SOURCE: 2017 CARS data (unofficial at time of report)

DATE GENERATED: 7/12/2018

# NASSAU COUNTY

## District 2 Community Traffic Safety Program



### 2017 Commercial Motor Vehicle Crash Data Summary

165 Crashes • 1 Fatal • 6 Incapacitating • 15 Non-Incapacitating • 17 Possible Injury • 126 PDO\*

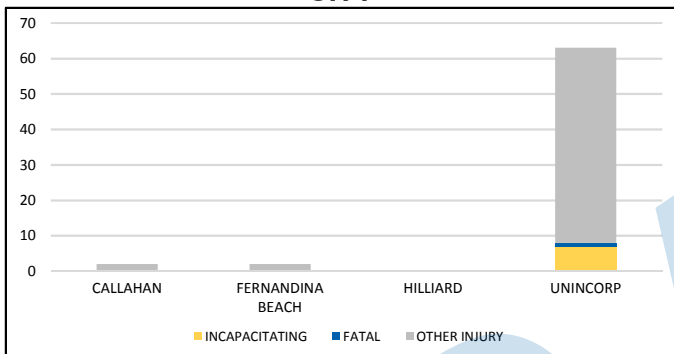
**TOTAL  
CRASHES**

Note: Crash severity is determined from the highest injury type in the crash (i.e. if a crash had both a fatal and a serious it is determined to be a fatal crash).  
\*PDO - Property Damage Only

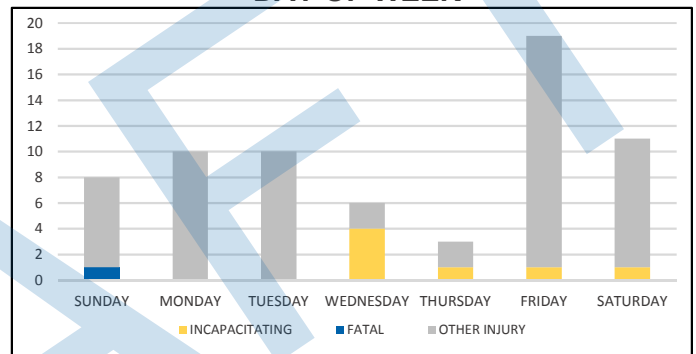
**PEOPLE KILLED  
OR INJURED**

1 Fatality • 7 Incapacitating Injuries • 59 Other Injuries

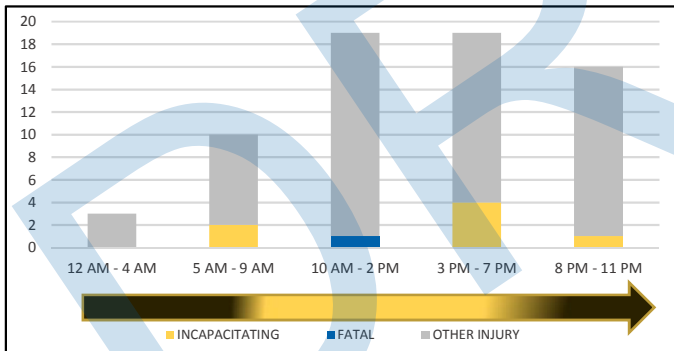
**CITY**



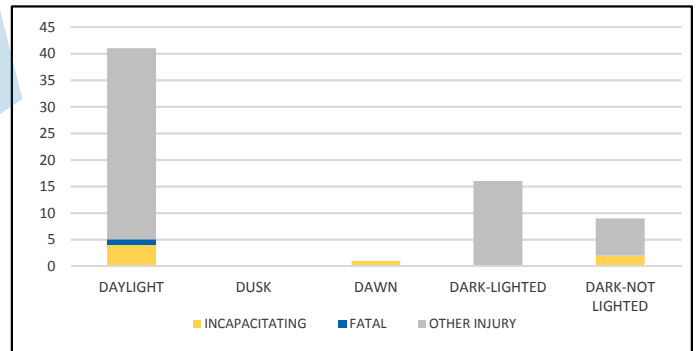
**DAY OF WEEK**



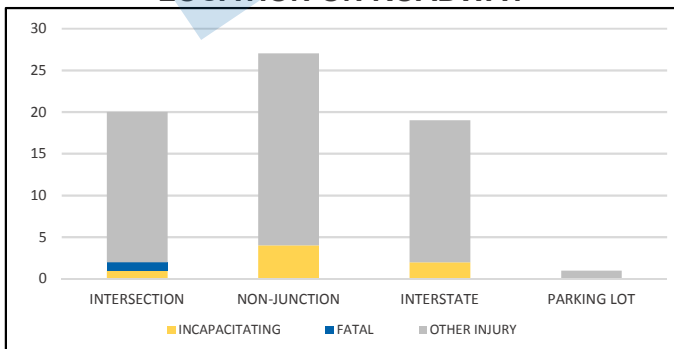
**TIME OF DAY**



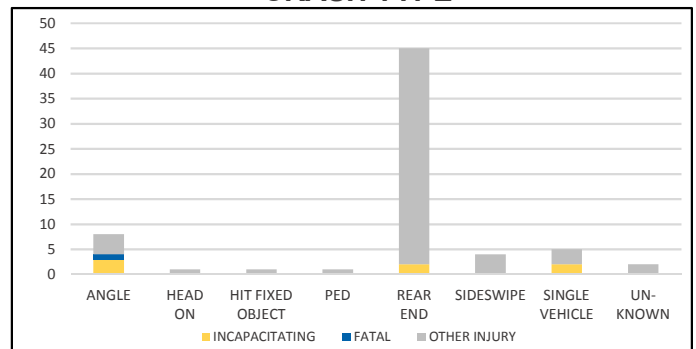
**LIGHTING**



**LOCATION ON ROADWAY**



**CRASH TYPE**



NOTE: Incapacitating/Fatal/Other Injury in graphs indicates persons not crashes.

SOURCE: 2017 CARS data (unofficial at time of report)

DATE GENERATED: 7/12/2018

# PUTNAM COUNTY

## District 2 Community Traffic Safety Program



### 2017 Commercial Motor Vehicle Crash Data Summary

90 Crashes • 3 Fatal • 4 Incapacitating • 8 Non-Incapacitating • 8 Possible Injury • 67 PDO\*

TOTAL  
CRASHES

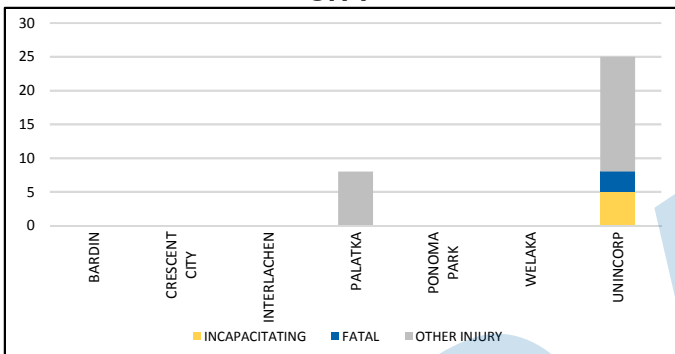
Note: Crash severity is determined from the highest injury type in the crash (i.e. if a crash had both a fatal and a serious it is determined to be a fatal crash).

\*PDO - Property Damage Only

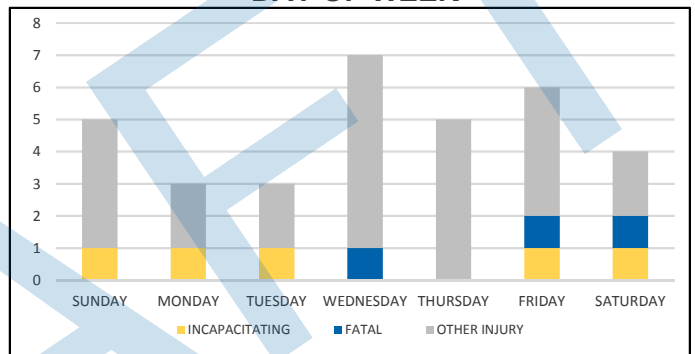
PEOPLE KILLED  
OR INJURED

3 Fatalities • 5 Incapacitating Injuries • 25 Other Injuries

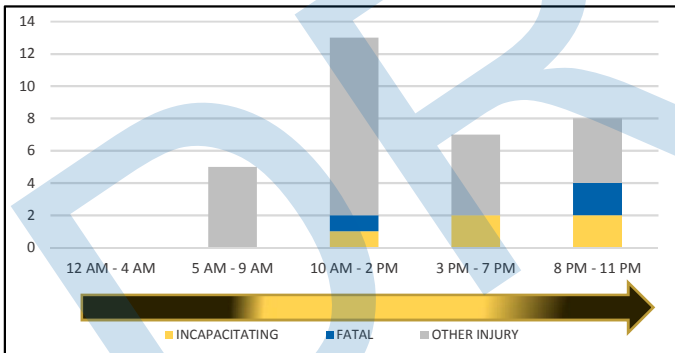
CITY



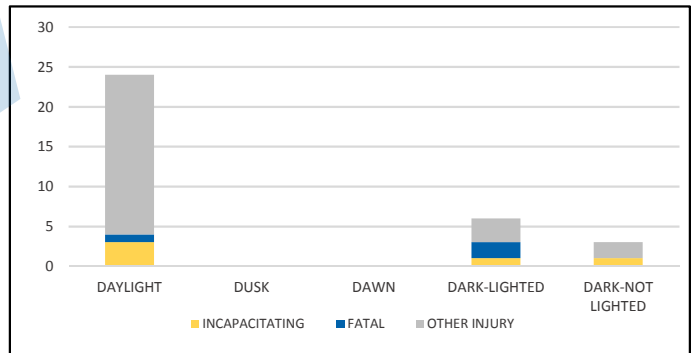
DAY OF WEEK



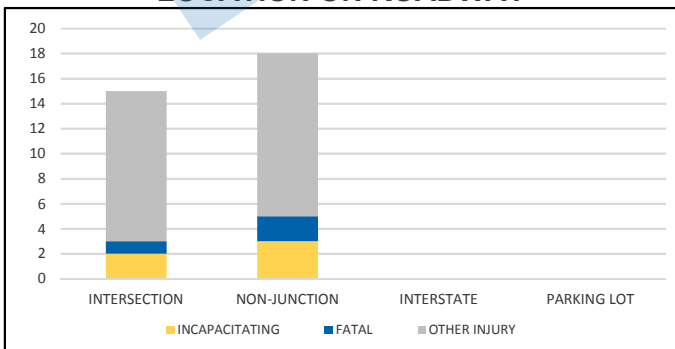
TIME OF DAY



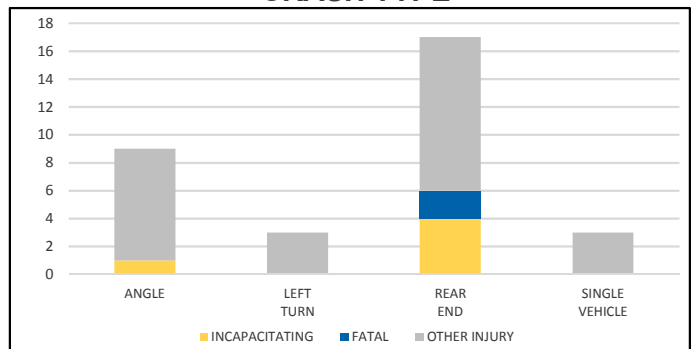
LIGHTING



LOCATION ON ROADWAY



CRASH TYPE



NOTE: Incapacitating/Fatal/Other Injury in graphs indicates persons not crashes.

SOURCE: 2017 CARS data (unofficial at time of report)

DATE GENERATED: 7/12/2018

# ST JOHNS COUNTY

## District 2 Community Traffic Safety Program



# 2017 Commercial Motor Vehicle Crash Data Summary

345 Crashes • 3 Fatal • 8 Incapacitating • 21 Non-Incapacitating • 26 Possible Injury • 287 PDO\*

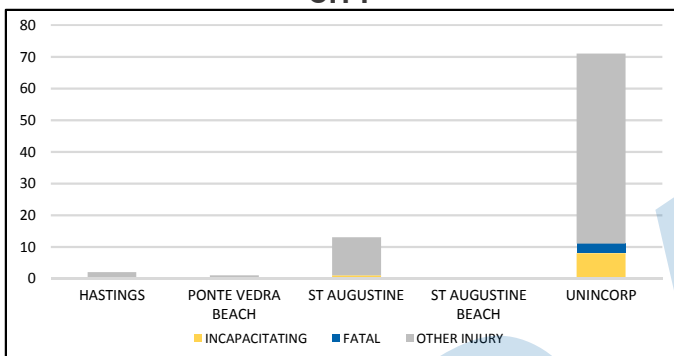
**TOTAL  
CRASHES**

Note: Crash severity is determined from the highest injury type in the crash (i.e. if a crash had both a fatal and a serious it is determined to be a fatal crash).  
\*PDO - Property Damage Only

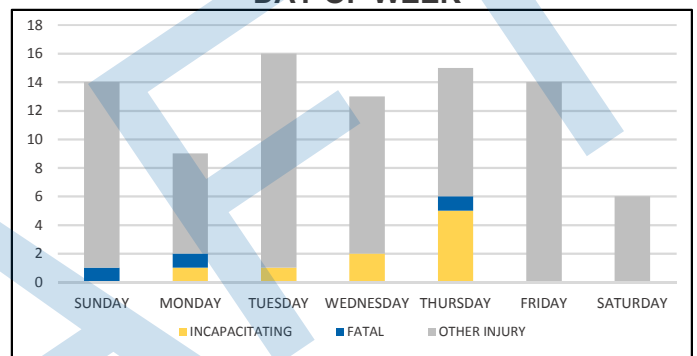
**PEOPLE KILLED  
OR INJURED**

3 Fatalities • 9 Incapacitating Injuries • 75 Other Injuries

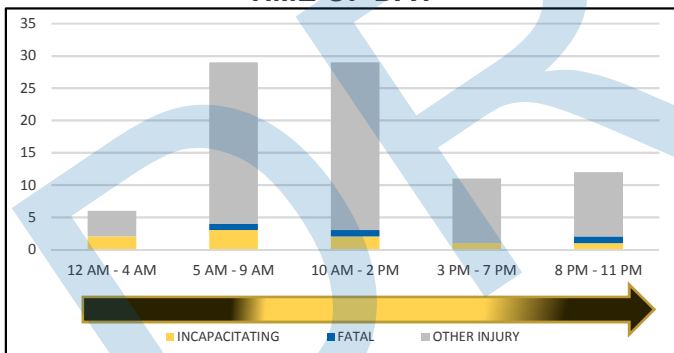
**CITY**



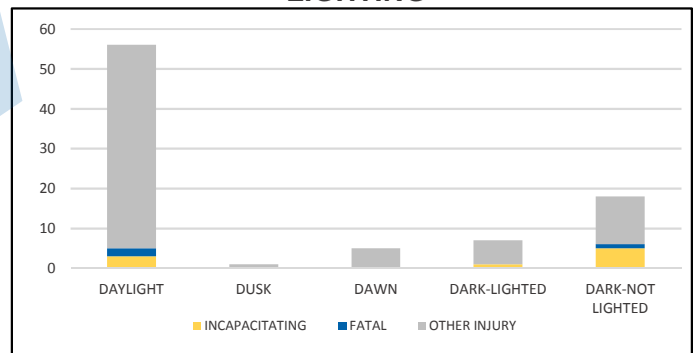
**DAY OF WEEK**



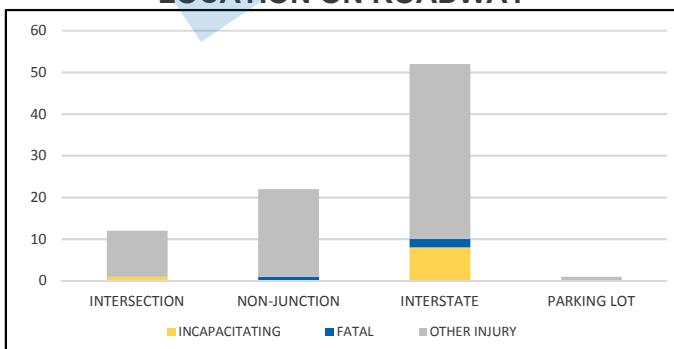
**TIME OF DAY**



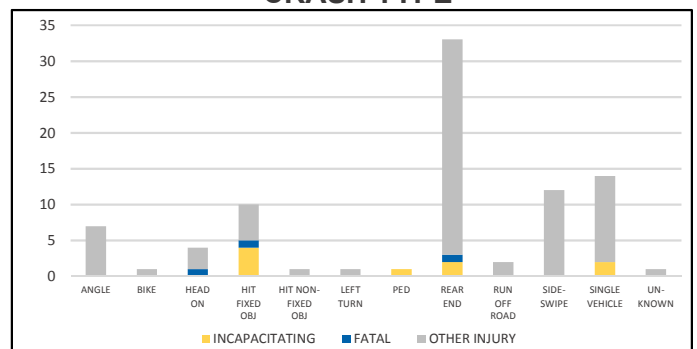
**LIGHTING**



**LOCATION ON ROADWAY**



**CRASH TYPE**



NOTE: Incapacitating/Fatal/Other Injury in graphs indicates persons not crashes.

SOURCE: 2017 CARS data (unofficial at time of report)

DATE GENERATED: 7/12/2018



# SUWANNEE COUNTY

## District 2 Community Traffic Safety Program



### 2017 Commercial Motor Vehicle Crash Data Summary

83 Crashes • 2 Fatal • 5 Incapacitating • 5 Non-Incapacitating • 9 Possible Injury • 62 PDO\*

TOTAL  
CRASHES

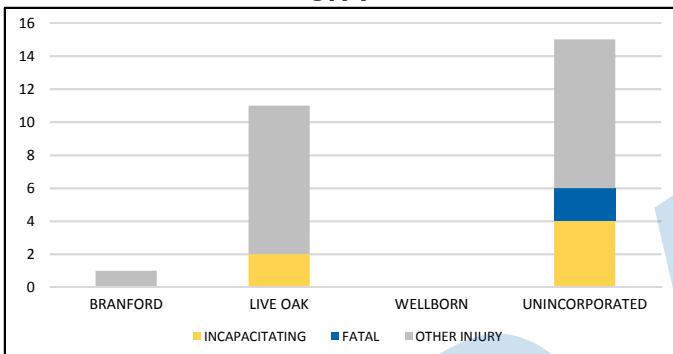
Note: Crash severity is determined from the highest injury type in the crash (i.e. if a crash had both a fatal and a serious it is determined to be a fatal crash).

\*PDO - Property Damage Only

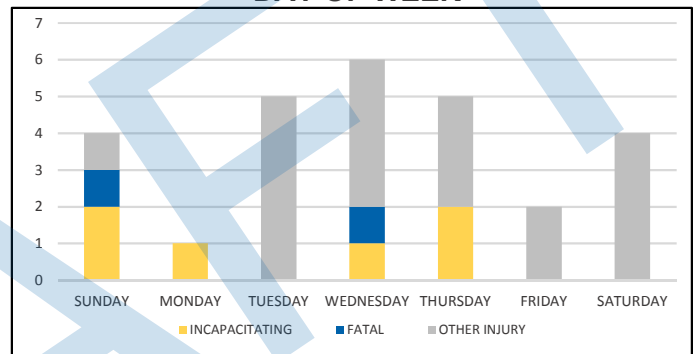
PEOPLE KILLED  
OR INJURED

2 Fatalities • 6 Incapacitating Injuries • 19 Other Injuries

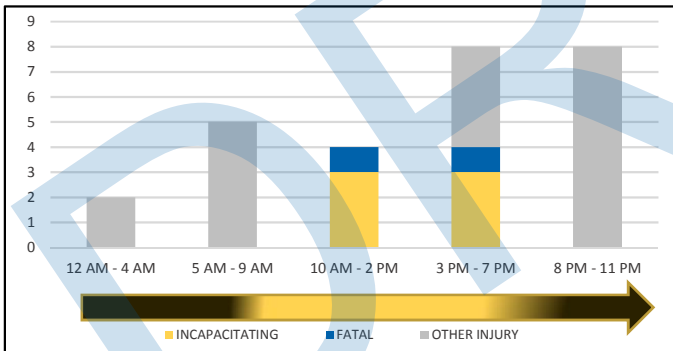
CITY



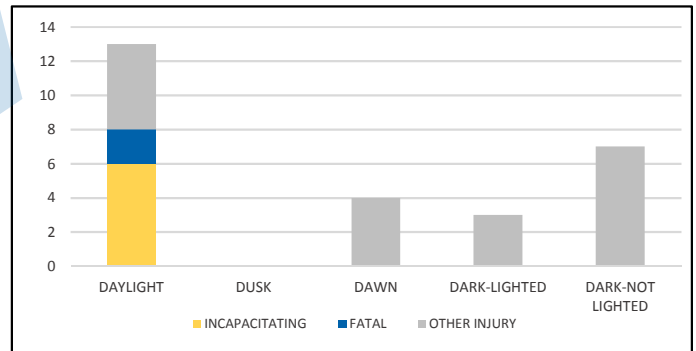
DAY OF WEEK



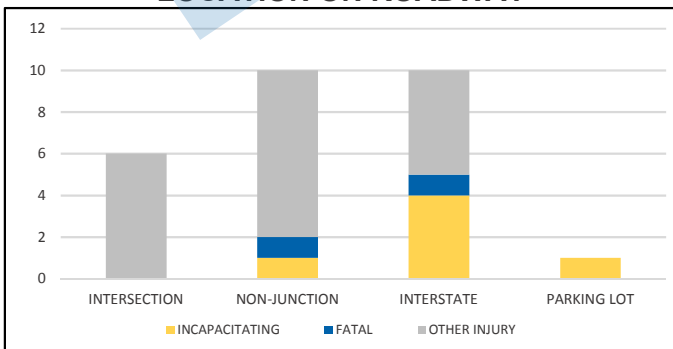
TIME OF DAY



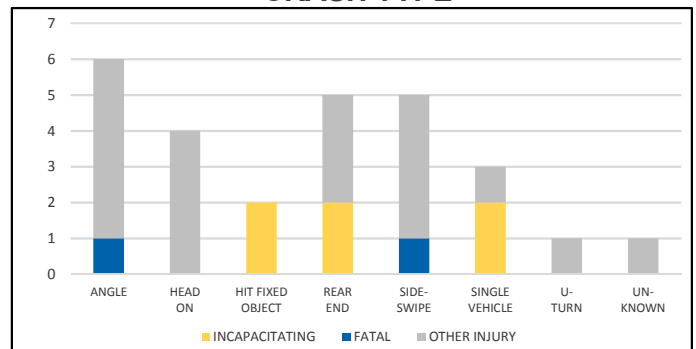
LIGHTING



LOCATION ON ROADWAY



CRASH TYPE



NOTE: Incapacitating/Fatal/Other Injury in graphs indicates persons not crashes.

SOURCE: 2017 CARS data (unofficial at time of report)

DATE GENERATED: 7/12/2018

# TAYLOR COUNTY

## District 2 Community Traffic Safety Program



### 2017 Commercial Motor Vehicle Crash Data Summary

31 Crashes • 1 Fatal • 0 Incapacitating • 4 Non-Incapacitating • 2 Possible Injury • 24 PDO\*

TOTAL  
CRASHES

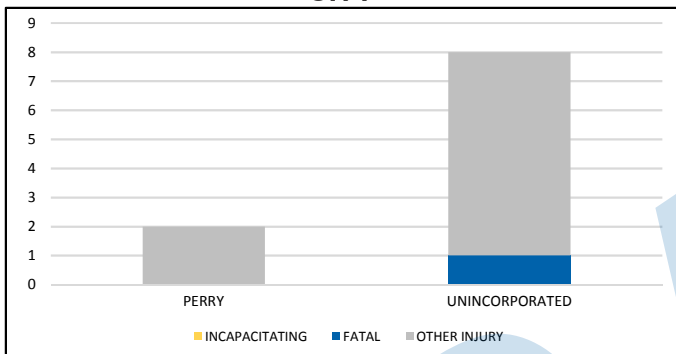
Note: Crash severity is determined from the highest injury type in the crash (i.e. if a crash had both a fatal and a serious it is determined to be a fatal crash).

\*PDO - Property Damage Only

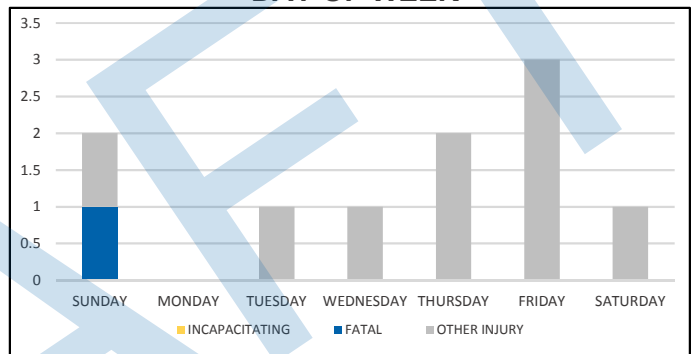
PEOPLE KILLED  
OR INJURED

1 Fatality • 0 Incapacitating Injuries • 9 Other Injuries

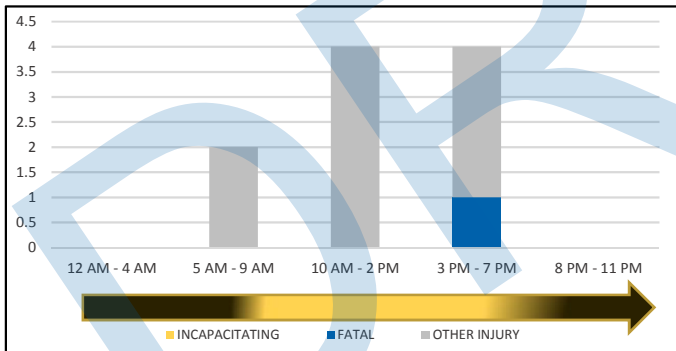
CITY



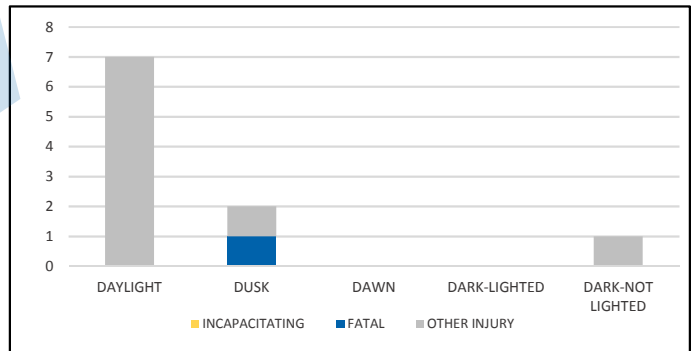
DAY OF WEEK



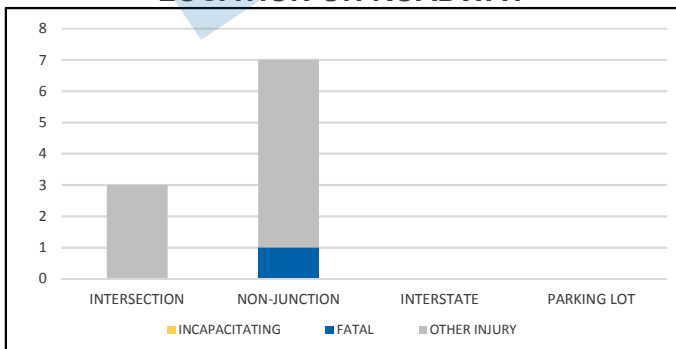
TIME OF DAY



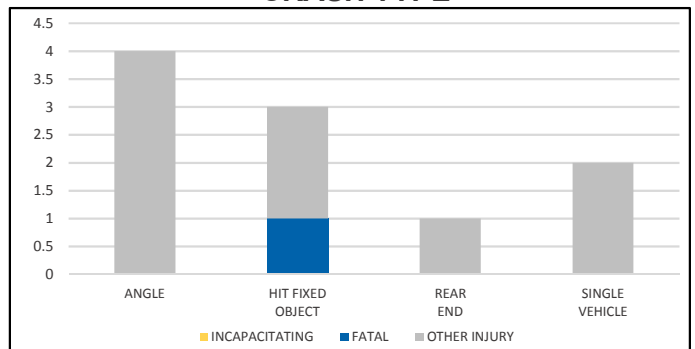
LIGHTING



LOCATION ON ROADWAY



CRASH TYPE



NOTE: Incapacitating/Fatal/Other Injury in graphs indicates persons not crashes.

SOURCE: 2017 CARS data (unofficial at time of report)

DATE GENERATED: 7/12/2018

# UNION COUNTY

## District 2 Community Traffic Safety Program



### 2017 Commercial Motor Vehicle Crash Data Summary

14 Crashes • 1 Fatal • 0 Incapacitating • 1 Non-Incapacitating • 0 Possible Injury • 12 PDO\*

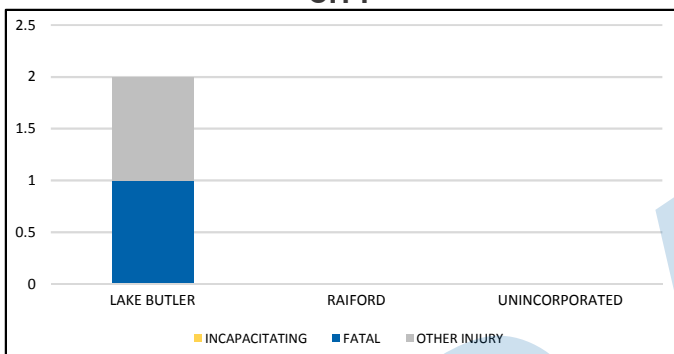
TOTAL  
CRASHES

Note: Crash severity is determined from the highest injury type in the crash (i.e. if a crash had both a fatal and a serious it is determined to be a fatal crash).  
\*PDO - Property Damage Only

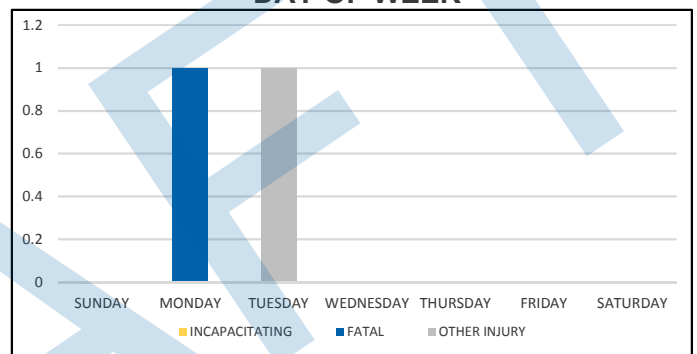
PEOPLE KILLED  
OR INJURED

1 Fatality • 0 Incapacitating Injuries • 1 Other Injuries

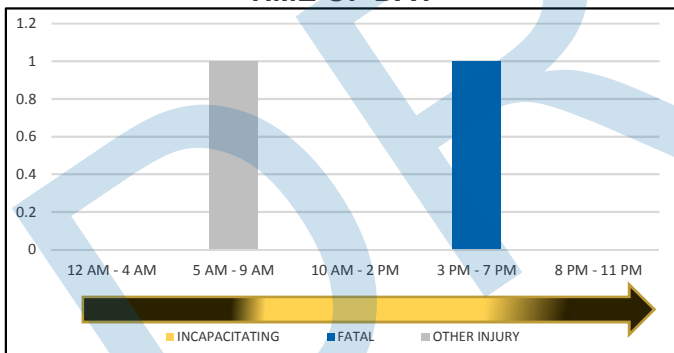
CITY



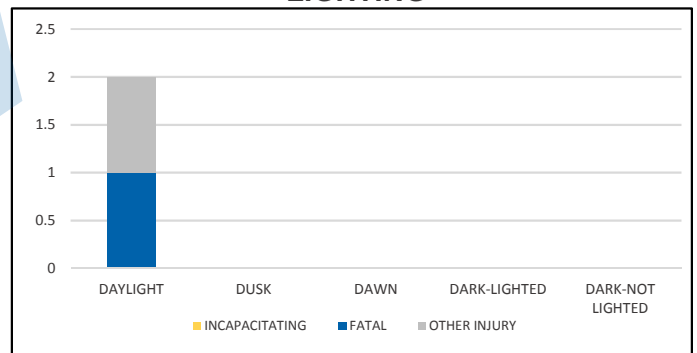
DAY OF WEEK



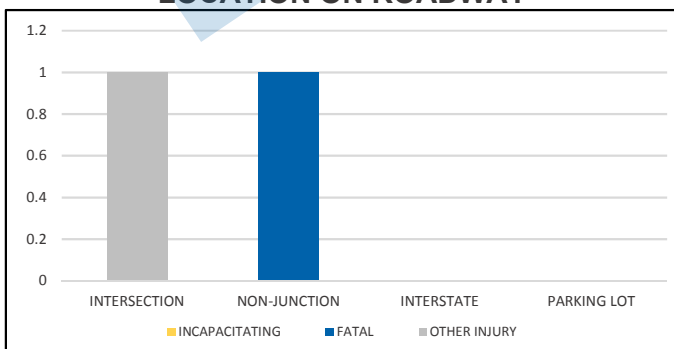
TIME OF DAY



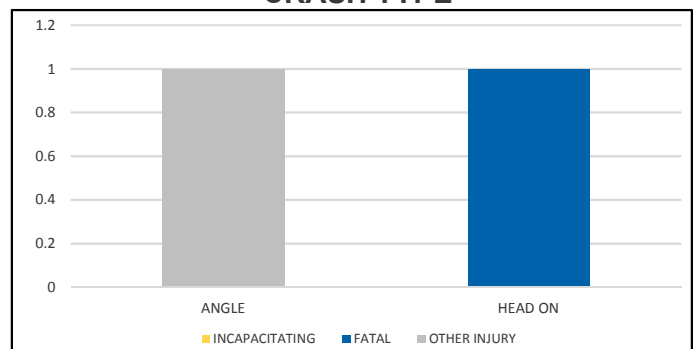
LIGHTING



LOCATION ON ROADWAY



CRASH TYPE



NOTE: Incapacitating/Fatal/Other Injury in graphs indicates persons not crashes.

SOURCE: 2017 CARS data (unofficial at time of report)

DATE GENERATED: 7/12/2018