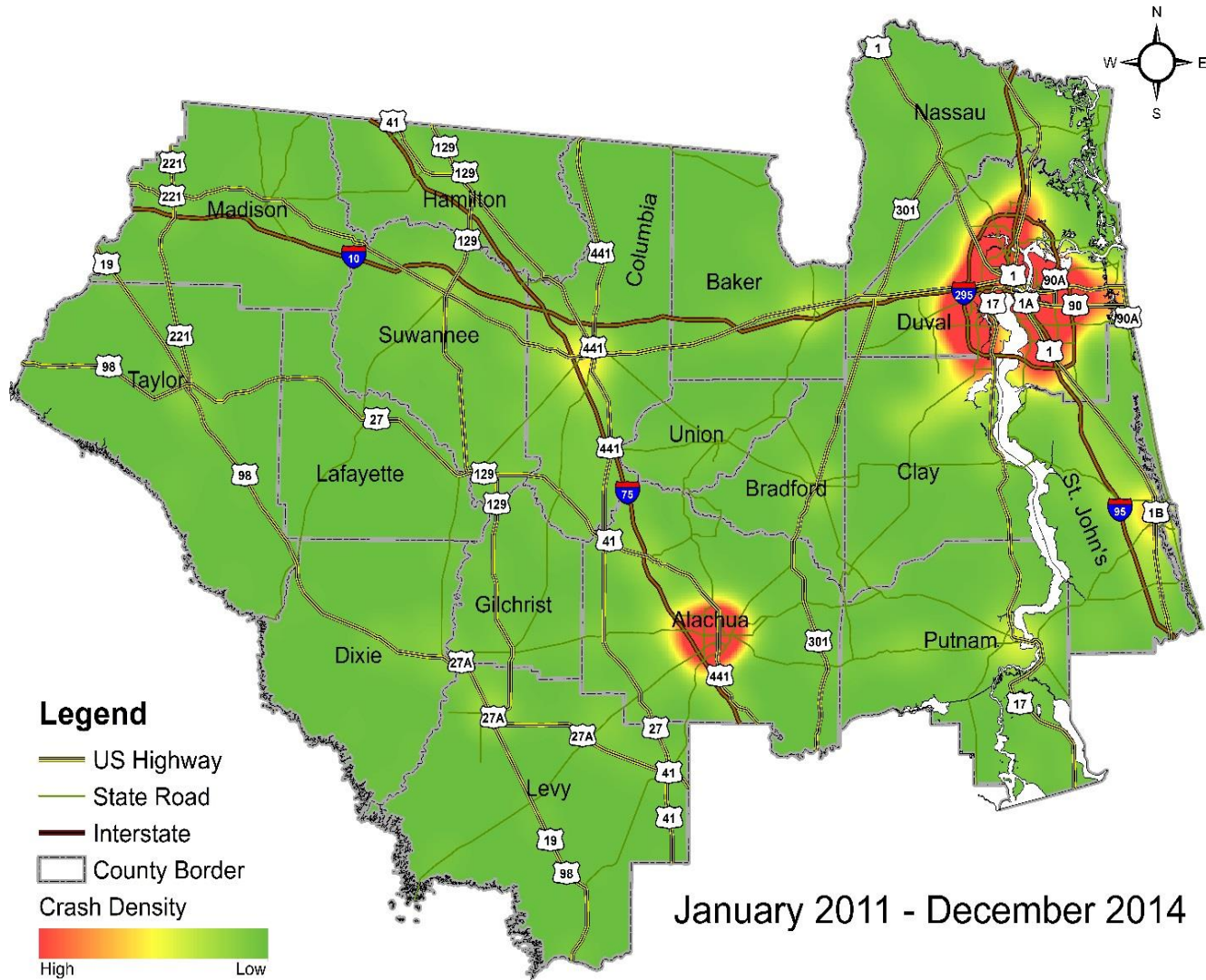


Child Passenger Safety

No Regrets When You
DRIVE WITH CARE

District Crash Facts



Car Seat Crusaders

Car Seat Crusaders is the new identity of our super car seat technicians that have been dedicating their time for years. Their knowledge of proper seat installations, long hours of work during inspections, and commitment to educating parents and caregivers of child passenger safety is invaluable.

Using the right safety belt is crucial in preventing or minimizing injury. Here are some tips about which safety belt to use:

- Rear Facing Seat - Birth of child until the age of 2, around 35 pounds
- Forward Facing Seat - typically 40-60 pounds
- Belt-Positioning Booster Seat - typically 8-12 years of age
- Lap & Shoulder Belt - Once the safety belt fits properly without a booster, but all children under 13 should sit in the back seat.

On a mission to protect our children.
Able to teach car seat installation
in a single inspection.

Attention Parents and Caregivers
New Child Restraint Law Beginning January 1, 2015

Every motor vehicle operator in Florida will be required to use a crash-tested, federally approved child restraint device for children until age 6.

TrafficSafetyTeam.org

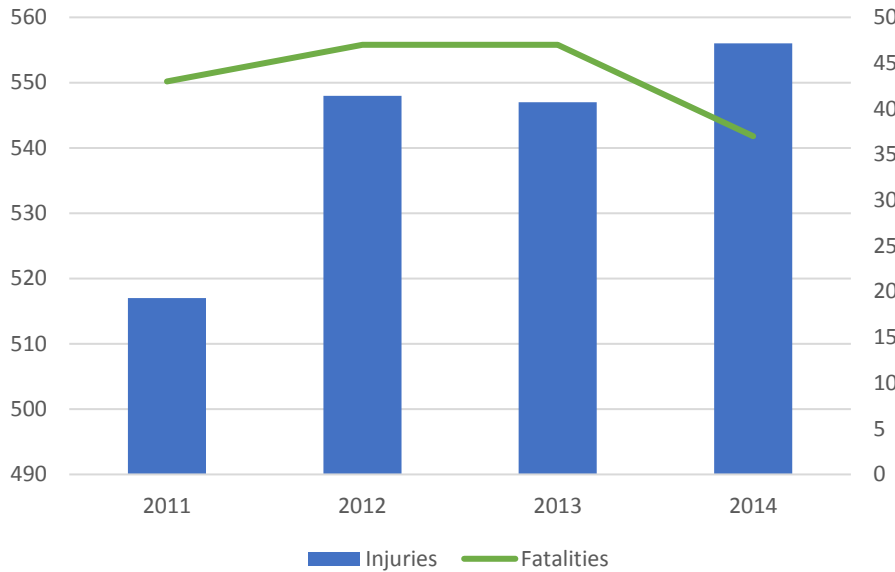
Source: Florida District Two Traffic Safety Team

2014 at a Glance

*Data was obtained from the Signal4 Analytics as reported by the officer. These numbers may vary from other studies due to the manner in which the data was analyzed.



The Florida Strategic Highway Safety Plan (SHSP) identifies Occupant Protection as a Continuing Priority which targets drivers, passengers, and children who are not using safety belts or appropriate child safety restraints.



Top Counties

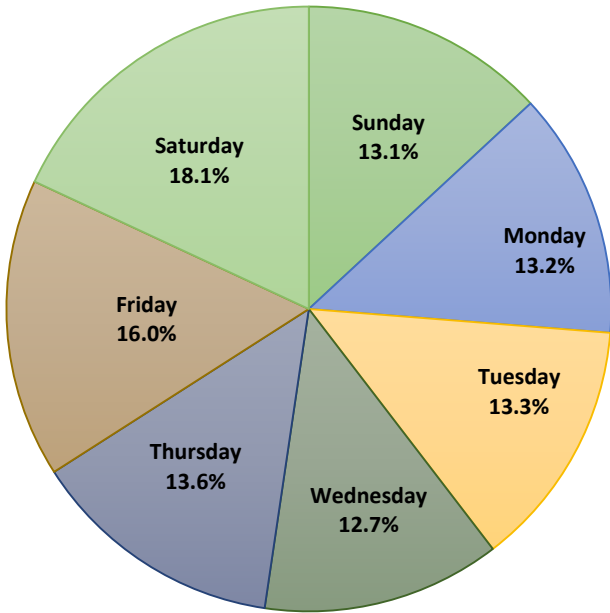


2010 - 2014 District Stats

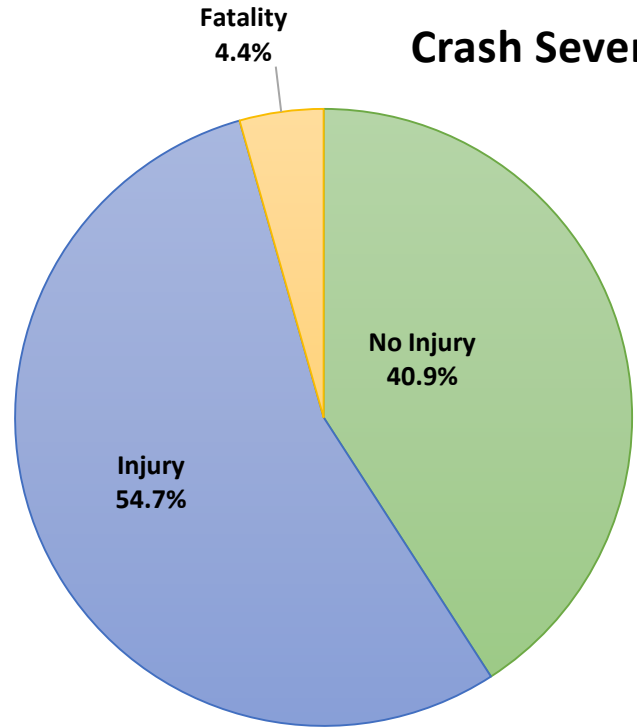
County	2011			2012			2013			2014			Total		
	Number of			Number of			Number of			Number of			Number of		
	Crashes	Fatalities	Injuries	Crashes	Fatalities	Injuries	Crashes	Fatalities	Injuries	Crashes	Fatalities	Injuries	Crashes	Fatalities	Injuries
26 Alachua	136	3	79	112	6	59	137	4	57	108	5	52	493	18	247
27 Baker	19	5	14	26	2	19	21	2	15	14	0	11	80	9	59
28 Bradford	10	1	6	12	0	7	8	0	7	6	0	6	36	1	26
71 Clay	43	2	27	37	1	27	50	3	36	45	1	32	175	7	122
29 Columbia	37	7	25	33	2	19	47	7	29	35	4	23	152	20	96
30 Dixie	7	0	6	15	2	8	15	1	10	11	1	5	48	4	29
72 Duval	323	4	200	581	18	282	651	16	266	585	17	283	2,140	55	1,031
31 Gilchrist	10	1	8	10	0	9	5	0	3	6	0	6	31	1	26
32 Hamilton	12	2	9	9	4	4	10	0	7	9	2	6	40	8	26
33 Lafayette	3	1	1	2	0	2	1	0	1	2	0	2	8	1	6
34 Levy	20	1	13	19	1	7	22	3	12	29	3	20	90	8	52
35 Madison	10	2	8	15	3	10	11	2	6	5	0	3	41	7	27
74 Nassau	26	4	19	10	2	6	17	0	12	19	0	10	72	6	47
76 Putnam	46	4	30	19	0	17	36	2	24	39	1	29	140	7	100
78 St. Johns	63	4	43	78	4	45	57	3	36	52	0	36	250	11	160
37 Suwannee	21	1	17	26	0	20	24	2	16	25	3	17	96	6	70
38 Taylor	11	1	8	13	2	6	8	1	4	12	0	8	44	4	26
39 Union	4	0	4	2	0	1	11	1	6	8	0	7	25	1	18
District Total	801	43	517	1,019	47	548	1,131	47	547	1,010	37	556	3,961	174	2,168

The Factors (2010 - 2014)

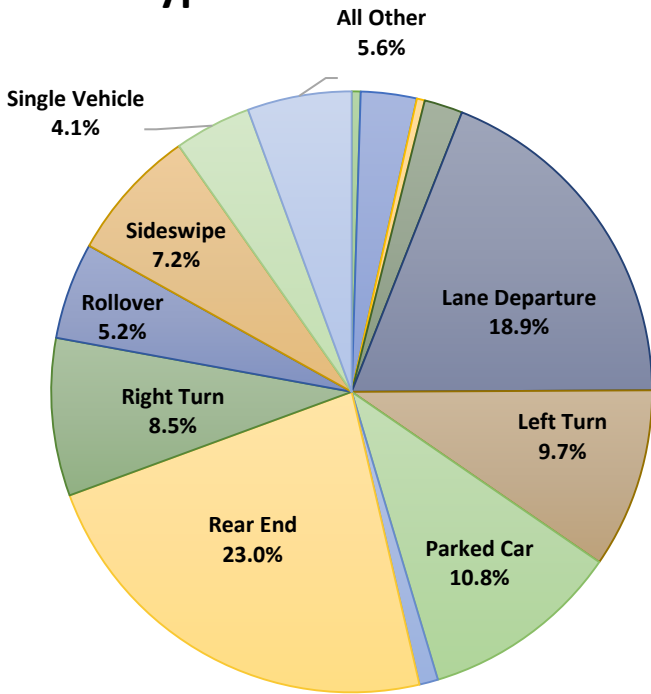
Day of the Week



Crash Severity



Crash Type



Crash Location

